

## DEATTI T4

# DEATTI 4G LTE Cellular Trail Camera and Bluetooth WiFi Connection Game Camera Bundle User Manual

Brand: DEATTI | Model: T4

## 1. INTRODUCTION

Thank you for choosing the DEATTI 4G LTE Cellular Trail Camera and Bluetooth WiFi Connection Game Camera Bundle. This manual provides detailed instructions for setting up, operating, and maintaining your trail camera to ensure optimal performance. Please read this manual thoroughly before using the product.

## 2. PRODUCT OVERVIEW

The DEATTI T4 Trail Camera is designed for remote monitoring of wildlife and outdoor environments, offering advanced features for reliable surveillance.

### Key Features:

- Bluetooth WiFi Connectivity:** Remote access via a mobile app for real-time viewing and status checks within a 20-meter range.
- 4G LTE Cellular Support:** Operates without traditional WiFi or external power, providing connectivity in remote areas.
- High-Resolution Imaging:** Captures 48MP photos and 2160P (2.7K) videos, even in low-light conditions with night vision.
- Fast Trigger Speed:** Motion-activated with a rapid 0.1-second trigger time, capturing wildlife swiftly.
- Solar Powered & Durable:** Equipped with a 7800mAh rechargeable battery and solar panel for continuous operation, and an IP65 waterproof rating for harsh weather.
- Wide Detection Angle:** Features a 120° ultra-wide detection angle for comprehensive coverage.

### Product Components:



Image: The DEATTI 4G LTE Cellular Trail Camera bundle, showing two camera units, one with an attached solar panel for continuous power.

## 4G LTE Cellular & APP Control

\*Included a SIM card with 300MB trial data within 30 days

\*Support remote, real-time viewing, Easy sharing



Image: A DEATTI trail camera mounted on a wooden structure, illustrating its 4G LTE cellular capability and remote control via a smartphone app. A SIM card slot is visible.



# Wireless Solar Power

Install anywhere and use forever, never need you to repeatedly remove and charge



Image: A DEATTI trail camera mounted on a tree with its solar panel, highlighting its wireless solar power feature and 7800mAh rechargeable battery.



# WiFi and Bluetooth Connection & APP Control

Built-in WiFi effective distance 20m



Image: A DEATTI trail camera mounted on a tree, with icons indicating WiFi and Bluetooth connectivity for app control, showing a bear in the background.



## 2.7K Video with Audio

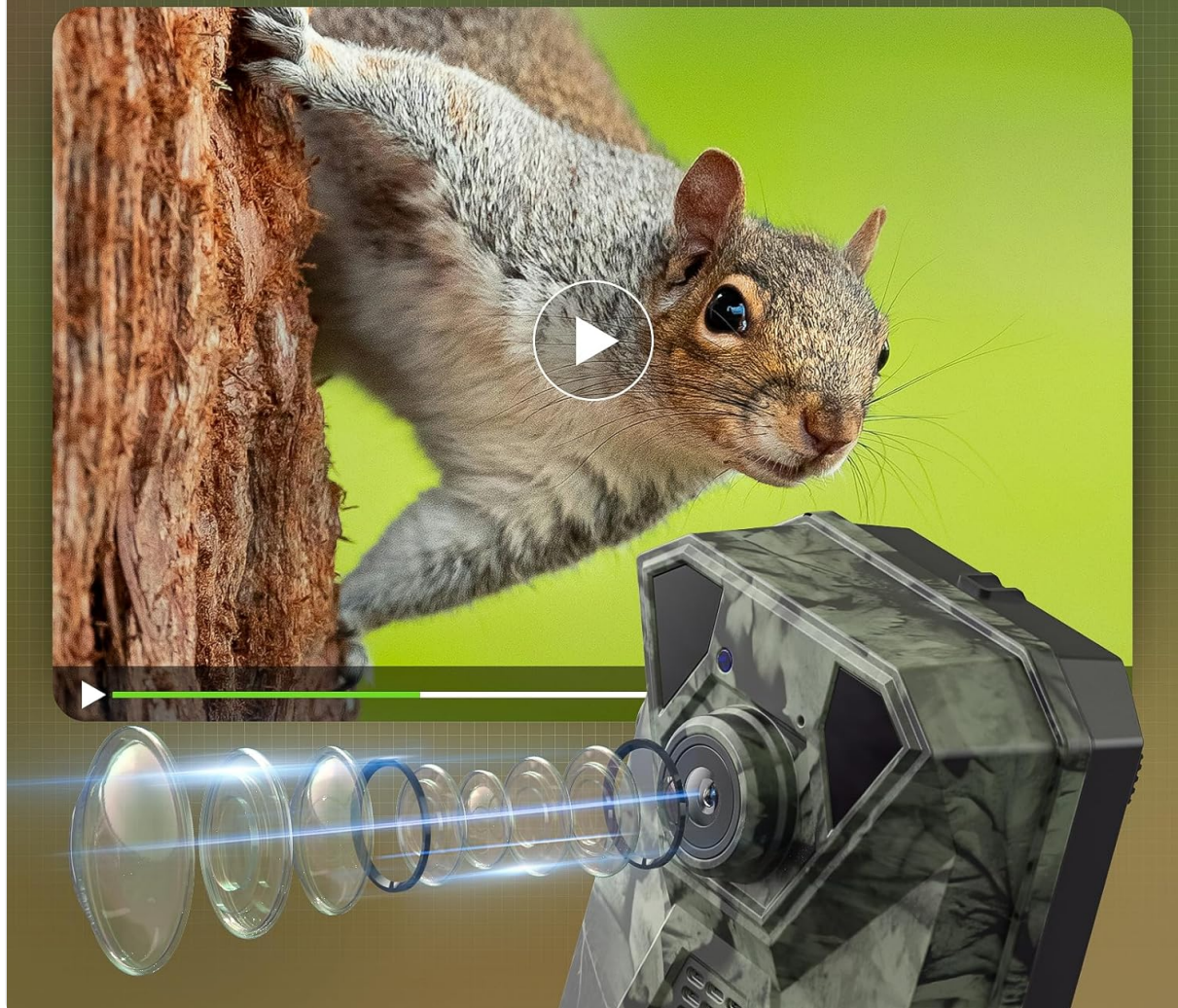


Image: A DEATTI trail camera capturing a squirrel, illustrating its capability to record 2.7K video with audio, with a visual representation of its lens system.



# 120° Ultra-wide Detection Angle

Get more areas covered



Image: Two bear cubs playing in a forest, with an overlay showing the DEATTI trail camera's 120° ultra-wide detection angle, indicating broad coverage.



# Trail Camera T4-Product Size

2.0" Color Screen to Review Photo and Videos on Camera



Image: The DEATTI Trail Camera T4 with its dimensions (18cm/7inch length, 13cm/5inch height, 9.3cm/3.7inch width, 5.5cm/2inch depth) and a 2.0-inch color screen for reviewing media.



# **IP66 Weatherproof**

All Weather Protection, Rugged housing, Easy to mount.



Image: A DEATTI trail camera mounted on a tree in the rain, demonstrating its IP66 weatherproof rating for all-weather protection and rugged housing.

# Real-time Notification & Two Way Audio

Receive instant alerts , easily check snapshots.



Image: A hunter checking his smartphone, which displays a real-time notification from the DEATTI trail camera indicating activity detected, highlighting its two-way audio capability.

## 3. SETUP GUIDE

### 3.1 Battery and SIM/SD Card Installation

1. Open the camera casing by unlatching the side clips.
2. Insert the provided 7800mAh rechargeable batteries into the battery compartment, ensuring correct polarity.
3. Insert a compatible 4G LTE SIM card into the designated SIM card slot. The camera bundle includes a SIM card with 300MB trial data for initial use.
4. Insert a high-speed SD card (not included, recommended Class 10 or higher, up to 256GB) into the SD card slot for storing photos and videos.
5. Close the camera casing securely, ensuring the latches are fully engaged to maintain the IP65 waterproof seal.



## 3.2 Mounting the Camera

1. Choose a suitable location for mounting, such as a tree or pole, ensuring a clear view of the area you wish to monitor.
2. Use the included mounting strap or bracket to securely attach the camera. Ensure the camera is stable and will not shift due to wind or animal activity.
3. Position the solar panel to receive maximum direct sunlight throughout the day for optimal charging of the internal battery.
4. Adjust the camera angle to cover the desired detection zone. The 120° ultra-wide detection angle allows for broad coverage.

## 3.3 App Connection

1. Download the official DEATTI mobile application from your smartphone's app store (iOS or Android).
2. Ensure your camera is powered on.
3. Open the app and follow the on-screen instructions to connect to your camera via Bluetooth. Once connected, the app will guide you through setting up the WiFi connection for remote access.
4. Verify the connection by checking the camera status and live view within the app.

# 4. OPERATING INSTRUCTIONS

## 4.1 Powering On/Off

- To power on the camera, slide the power switch to the 'ON' position.
- To power off, slide the switch to the 'OFF' position.

## 4.2 Camera Modes and Settings

Access camera settings primarily through the mobile application. The 2.0-inch LCD screen on the camera can be used for basic review and initial setup.

- **Photo Mode:** Captures still images. Set resolution (up to 48MP) and burst shot settings (1 to 3 shots per trigger).
- **Video Mode:** Records video clips (up to 2160P/2.7K with audio). Set video length and resolution.
- **Photo + Video Mode:** Captures a photo followed by a video clip.
- **Trigger Interval:** Adjust the delay between detections.
- **PIR Sensitivity:** Set the sensitivity of the motion sensor (High, Medium, Low) based on environmental conditions.
- **Night Vision:** The camera automatically switches to night vision mode in low light conditions, utilizing infrared LEDs for clear images without disturbing wildlife.

## 4.3 Remote Monitoring via App

- **Live View:** Use the app to view real-time footage from your camera.
- **Media Gallery:** Browse and download captured photos and videos directly to your smartphone.
- **Real-time Notifications:** Receive instant alerts on your phone when motion is detected by the camera.
- **Two-Way Audio:** Communicate through the camera using the app (if supported by the specific

camera model in the bundle).

- **Camera Status:** Check battery level, signal strength, and SD card capacity remotely.

## 5. MAINTENANCE

- **Cleaning:** Regularly clean the camera lens and PIR sensor window with a soft, dry cloth to ensure clear images and accurate detection. Do not use abrasive cleaners.
- **Battery Management:** The solar panel continuously charges the internal 7800mAh battery. In prolonged periods of low sunlight, or if the battery level drops significantly, consider manually charging the camera or replacing batteries if necessary.
- **Firmware Updates:** Periodically check the DEATTI app or website for any available firmware updates for your camera. Keeping the firmware updated ensures optimal performance and access to new features.
- **SD Card Management:** Format the SD card regularly (at least once a month) using the camera's format function or a computer to prevent data corruption and ensure smooth operation. Back up important files before formatting.
- **Environmental Checks:** Periodically inspect the camera's mounting and casing for any signs of wear or damage, especially after severe weather conditions, to maintain its IP65 waterproof integrity.

## 6. TROUBLESHOOTING

### Common Issues and Solutions:

- **Camera Not Powering On:**
  - Ensure batteries are correctly inserted and fully charged.
  - Check the power switch is in the 'ON' position.
- **No Images/Videos Captured:**
  - Verify the SD card is inserted correctly and has sufficient free space. Try formatting the SD card.
  - Check PIR sensitivity settings; increase if necessary.
  - Ensure the camera is positioned correctly within the detection range (up to 30 meters).
- **Poor Image/Video Quality:**
  - Clean the camera lens and sensor window.
  - Ensure there are no obstructions in front of the camera.
  - Check resolution settings in the app.
- **App Connection Issues:**
  - Ensure Bluetooth is enabled on your phone and the camera.
  - Make sure you are within the 20-meter effective range for Bluetooth/WiFi connection.



- Restart both the camera and your smartphone.
- **No Cellular Data/Notifications:**
  - Verify the SIM card is active and has data.
  - Check cellular signal strength in the camera's location via the app.
  - Ensure app notifications are enabled on your smartphone.

## 7. SPECIFICATIONS

Feature	Specification
Photo Resolution	Up to 48 Megapixels
Video Resolution	Up to 2160P (2.7K) with Audio
Trigger Speed	0.1 seconds
Detection Distance	Up to 30 meters (98 feet)
Detection Angle	120° Ultra-wide
Connectivity	4G LTE Cellular, Bluetooth, WiFi
Power Source	Solar Powered, 7800mAh Rechargeable Battery
Waterproof Rating	IP65
Display Screen	2.0-inch LCD
ASIN	B0DRBYZ9LS
Date First Available	December 24, 2024





## 8. WARRANTY AND SUPPORT

For warranty information, please refer to the documentation included with your purchase or visit the official DEATTI website. Warranty terms may vary based on region and retailer.

If you encounter any issues or require technical assistance, please contact DEATTI customer support through their official channels. Provide your product model (T4) and ASIN (B0DRBYZ9LS) for faster service.

**DEATTI Official Store:** [Visit the DEATTI Store on Amazon](#)

Related Documents

 <p>Model: F11</p> <p>4G LTE Cellular Trail Camera</p> <p>User Manual</p> <p>Before using the product, please read the Quick Guide carefully and keep it with you.</p> <p>Official Email: support@deatti.com</p> <p>This instruction manual is for reference only.</p>	<p><a href="#">DEATTI F11 4G LTE Cellular Trail Camera User Manual</a></p> <p>Comprehensive user manual for the DEATTI F11 4G LTE Cellular Trail Camera, covering setup, app connection, installation, features, and troubleshooting.</p>
 <p>Model No.: DET-T4</p> <p>User Manual</p> <p>Official Email: support@deatti.com</p>	<p><a href="#">DEATTI DET-T4 User Manual: Setup, Features, and Operation Guide</a></p> <p>This user manual provides comprehensive instructions for the DEATTI DET-T4 trail camera, covering device overview, battery and SD card installation, WiFi connection via the TrailCam Go app, operating modes, detailed settings for photo and video, and playback functions.</p>
 <p>Model No.: DET-T4</p> <p>User Manual</p> <p>Official Email: support@deatti.com</p>	<p><a href="#">Manuel d'utilisation de la caméra de chasse DEATTI DET-T4</a></p> <p>Découvrez comment installer, configurer et utiliser votre caméra de chasse DEATTI DET-T4. Ce manuel couvre l'installation des piles et de la carte SD, la connexion WiFi via l'application Trailcam Go, les modes de fonctionnement, les réglages photo/vidéo et le dépannage.</p>
 <p>Model No.: DET-T4</p> <p>Smart Battery Camera</p> <p>User Manual</p> <p>Official Email: support@deatti.com</p>	<p><a href="#">DEATTI Smart Battery Camera User Manual</a></p> <p>Comprehensive user manual for the DEATTI Smart Battery Camera, covering setup, Wi-Fi connection, features, charging, and troubleshooting.</p>