

## Manuals+

[Q & A](#) | [Deep Search](#) | [Upload](#)

Manuals.plus /

› [TOPWISH](#) /

› TOPWISH 10L 2.6GPM Portable Propane Tankless Water Heater Instruction Manual

## TOPWISH XBUS-AWH-001-W-10L

# TOPWISH 10L 2.6GPM Portable Propane Tankless Water Heater Instruction Manual

Brand: TOPWISH | Model: XBUS-AWH-001-W-10L

## 1. INTRODUCTION

This manual provides essential information for the safe and efficient operation of your TOPWISH 10L 2.6GPM Portable Propane Tankless Water Heater. Designed for outdoor use, camping, RVs, and cabins, this unit delivers instant hot water with a flow rate of 2.6 gallons per minute (GPM) and a heat output of 68,100 BTU. Please read all instructions carefully before installation and use.

## 2. SAFETY INFORMATION

Your safety is paramount. This water heater is equipped with multiple safety features. Always adhere to the following guidelines:

- **Carbon Monoxide Hazard:** This appliance can produce carbon monoxide, which has no odor. Never use this appliance in an enclosed space such as a camper, tent, car, or home. Ensure adequate ventilation when operating.
- **Scald Hazard:** Water temperature over 125°F (52°C) can cause severe burns instantly or death from scalds. Always test water temperature before bathing or showering.
- **Overheat Protection:** Automatically shuts off if water temperature exceeds safe limits.
- **Dry-Burning Prevention:** Prevents operation without sufficient water flow.
- **Flame Fault Detection:** Automatically cuts off gas supply if the flame extinguishes.
- **Anti-Blockage Protection:** Ensures proper exhaust flow.
- **Low-Flow Water Protection:** Prevents operation if water flow is too low.
- **High-Pressure Protection:** Safeguards against excessive water pressure.

Always ensure all connections are secure and leak-free before operating. Do not modify the appliance.

# Multiple Safety Protection

Ensure a Longlasting Service Life



Figure 1: Multiple Safety Protection Features

## 3. PACKAGE CONTENTS

Verify that all components are present and undamaged:

- TOPWISH 10L Portable Propane Tankless Water Heater Unit
- Gas Regulator Hose
- Shower Head with Hose
- Water Inlet/Outlet Connectors
- Mounting Hardware (screws, anchors)
- Instruction Manual

**Note:** 2x 'D' size batteries for ignition are NOT included and must be purchased separately.

## 4. SETUP AND INSTALLATION

Follow these steps for proper installation:

1. **Mount the Heater:** Hang the water heater vertically on a stable wall or suitable structure using the provided mounting hardware. Ensure it is in a well-ventilated outdoor area.

2. **Connect Water Lines:** Connect the cold water inlet (blue) to your water source and the hot water outlet (red) to the shower hose. Ensure all water connections are tight to prevent leaks.
3. **Install Batteries:** Open the battery compartment and insert two 'D' size batteries, ensuring correct polarity.
4. **Connect Gas Supply:** Attach the gas regulator hose to the gas inlet on the heater and the other end to a propane tank. Tighten all gas connections securely.

## Install in Minutes

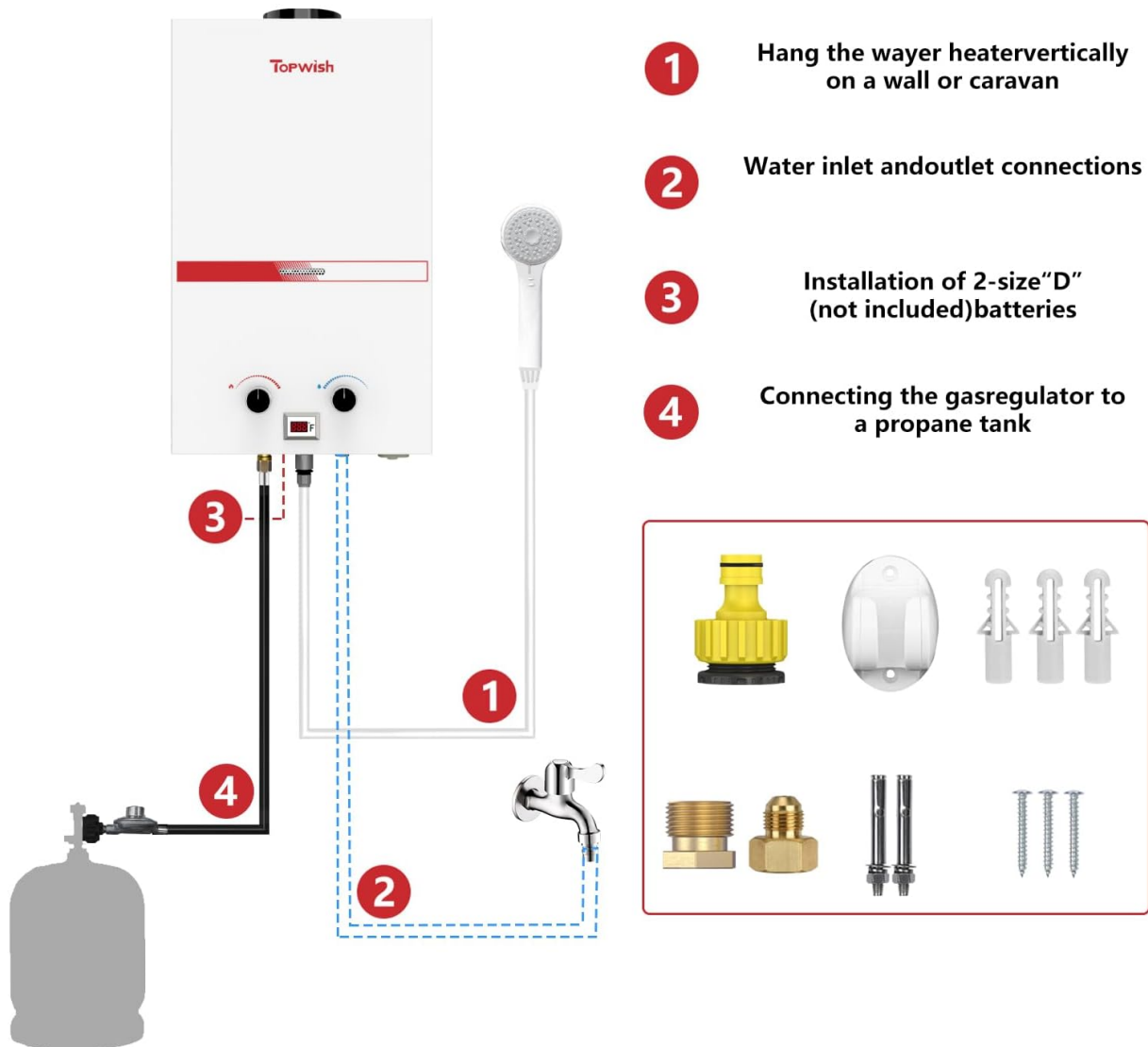


Figure 2: Installation Steps

### Installation Video Guide

Video 1: Detailed guide on how to install the TOPWISH Portable Propane Tankless Water Heater, including necessary connections and components.

## 5. OPERATING INSTRUCTIONS

To operate your water heater:

1. Ensure the propane tank valve is open and water supply is connected and turned on.
2. Flip the ON/OFF switch on the unit to the 'ON' position.
3. Adjust the gas knob (fire symbol) to control the heat intensity and the water knob (water drop symbol) to control water flow.

4. The digital display will show the current water temperature. Adjust knobs as needed to achieve your desired temperature. The unit heats water in approximately 5 seconds.
5. When finished, turn off the gas supply at the propane tank, then turn off the water supply, and finally flip the ON/OFF switch on the unit to 'OFF'.



Figure 3: Control Panel with Digital Display

## 6. MAINTENANCE

Regular maintenance ensures optimal performance and longevity:

- **Cleaning:** Wipe the exterior of the unit with a damp cloth. Do not use abrasive cleaners.
- **Check Connections:** Periodically inspect all gas and water connections for leaks or wear. Replace any damaged hoses or fittings immediately.

- **Winterization:** In freezing temperatures, drain all water from the unit and hoses to prevent damage. Disconnect the water lines and open the drain valves to ensure no water remains inside.
- **Battery Replacement:** Replace 'D' size batteries as needed for reliable ignition.

## 7. TROUBLESHOOTING

If you encounter issues, refer to the following common solutions:

- **No Hot Water:** Check propane supply, ensure gas tank is not empty and valve is open. Verify water supply is on and flowing. Check if batteries are installed correctly and have sufficient charge.
- **Low Water Flow:** Ensure water source has adequate pressure (20-120 PSI). Check for kinks in hoses or blockages in the shower head.
- **Unit Not Igniting:** Confirm batteries are fresh and correctly inserted. Ensure gas and water are connected and turned on.
- **Error Codes:** If the digital display shows an error code, consult the full troubleshooting section in the printed manual or contact customer support.

## 8. SPECIFICATIONS

Feature	Specification
Brand	TOPWISH
Model Number	XBUS-AWH-001-W-10L
Product Dimensions	13"W x 21"H x 7.08"D
Item Weight	21.2 pounds
Maximum Flow Rate	2.6 Gallons Per Minute (10L)
Heat Output	68,100 BTU per Hour
Maximum Temperature	75 Degrees Celsius (167°F)
Water Pressure Range	20–120 PSI
Power Source	Liquid Propane (requires 2x 'D' batteries for ignition)
Mounting Type	Wall
Special Features	Dry Combustion Protection, Flame Failure Protection, High Water Pressure Protection, Low Water Flow Protection, Overheat Protection

## 9. WARRANTY AND SUPPORT

TOPWISH stands behind its products with a **1-year warranty**. We are committed to product quality and

customer satisfaction. If you require assistance, have questions, or need to claim warranty service, please contact our dedicated support team. Our team is ready to help you with any inquiries or issues you may encounter.

For support, please refer to the contact information provided in your product packaging or visit the official TOPWISH website.