

[Manuals.plus](#) /

› [Urnqowuy](#) /

› Urnqowuy 626458R L190F Limit Control Switch User Manual

## Urnqowuy 626458R L190F

# Urnqowuy 626458R L190F Limit Control Switch User Manual

For Nordyne, Frigidaire, and Maytag Furnaces and Heaters

## 1. PRODUCT OVERVIEW

---

The Urnqowuy 626458R L190F Limit Control Switch is an essential safety component designed for various heating systems, including furnaces and heaters. Its primary function is to provide overheat protection by automatically cutting off the circuit when a predetermined temperature limit is exceeded. This mechanism helps prevent equipment damage and ensures safe operation.

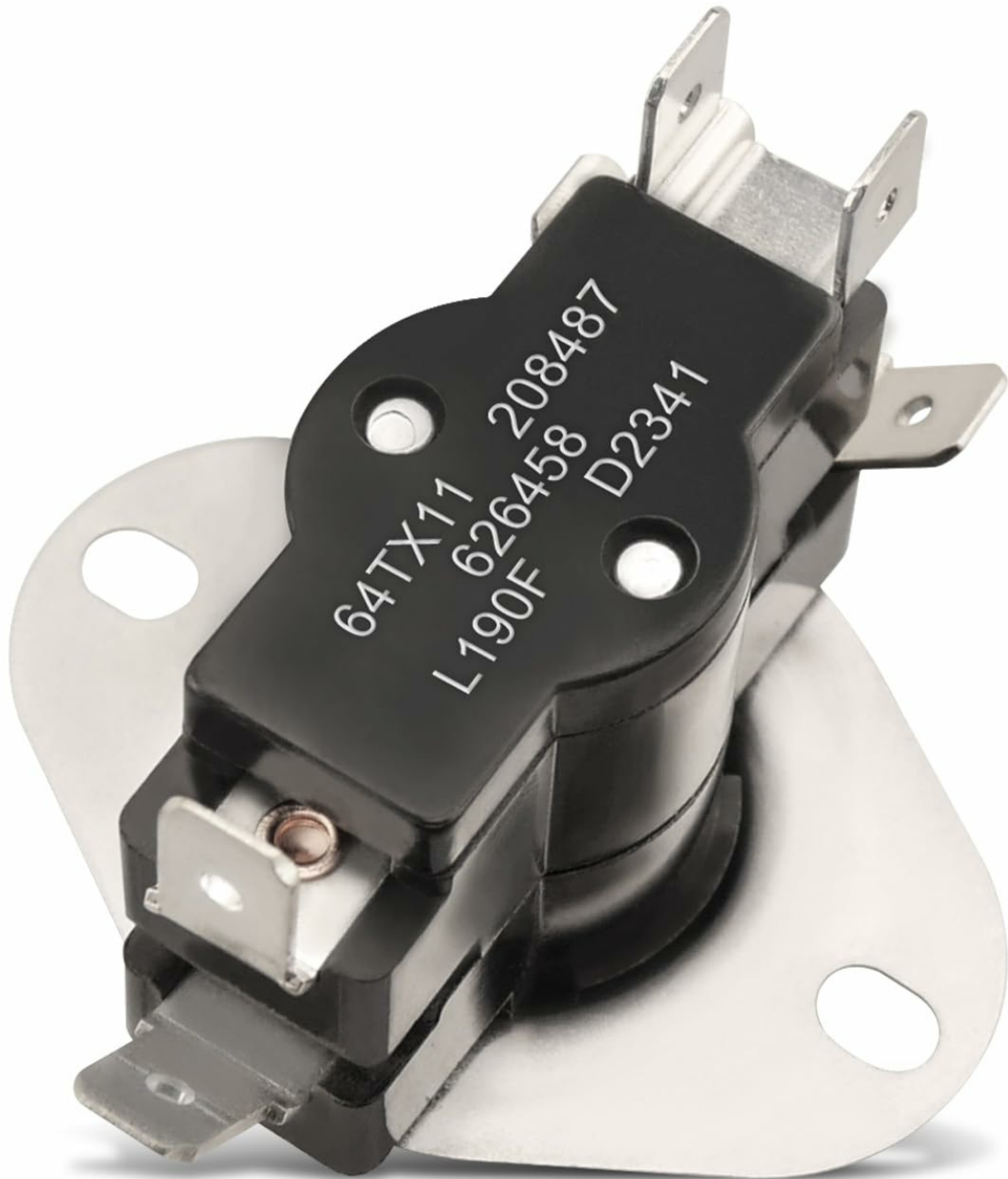


Image 1.1: The Urnqowuy 626458R L190F Limit Control Switch, showing its compact design and terminal connections.

## 2. COMPATIBILITY

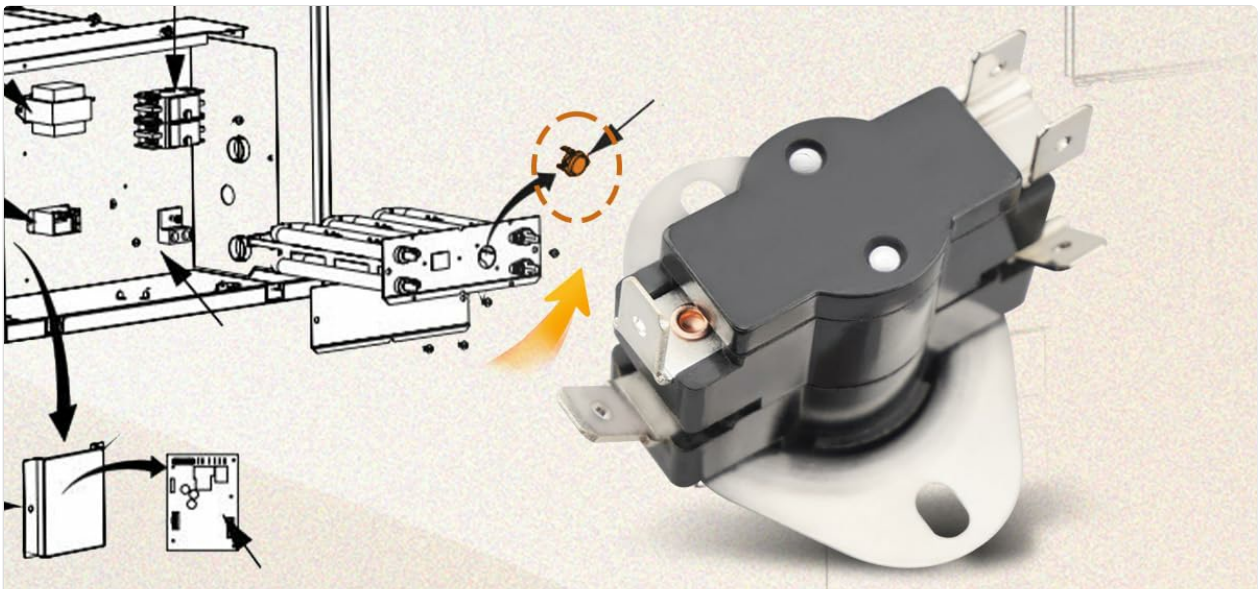
This limit control switch is a direct replacement for Nordyne 626458R and is compatible with a wide range of furnaces and heaters from brands such as Nordyne, Frigidaire, and Maytag. It also replaces part numbers 64TX11, 208487, 626458, and D2341.



## **626458R L190F Limit Control Switch Compatible with Nordyne Air Handler**

Limit Control Switch for Furnace and Heater with 2 Pole

Image 2.1: The 626458R L190F Limit Control Switch shown in context with a Nordyne Air Handler, highlighting its compatibility.



## Replace part number

626458R 64TX11, 208487, 626458 and D2341

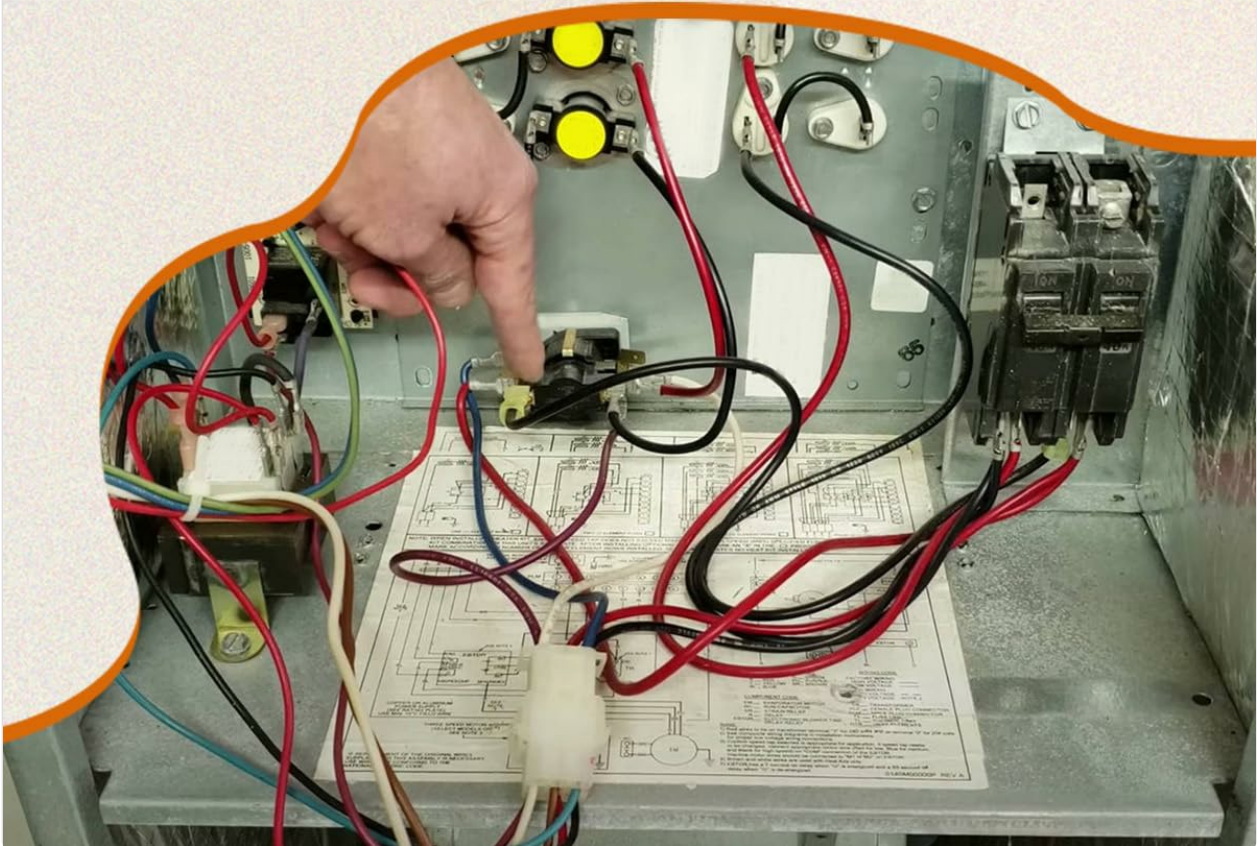


Image 2.2: Illustration of various furnace models, indicating broad compatibility with the limit control switch, including specific Nordyne models like B6BV-000K-B-10 and E6-012.

### 3. KEY FEATURES

- **Overheat Protection:** Provides critical overheat protection for heating systems, automatically cutting off power to prevent damage.
- **Rapid Response:** Designed for ultra-high sensitivity, ensuring a quick response to temperature changes and immediate circuit interruption when necessary.
- **Durable Construction:** Manufactured from high-quality metal and electronic components, offering strength, durability, and resistance to high temperatures and wear for extended service life.

- **Precise Control:** Controls mechanical equipment travel and limit protection, contributing to the overall safe operation of the appliance.

# Product Details



*Made of High-Quality  
Metal and Plastic*

*Adhere to the  
initial design*



*Accurate  
temperature response*



Image 3.1: Detailed view of the limit control switch, emphasizing its construction from high-quality metal and plastic, adherence to initial design, and accurate temperature response.

## 4. SPECIFICATIONS

Specification	Detail
Model Number	626458R L190F

Maximum Current	25 Amps
Input Power / Operating Voltage	240 Volts (AC)
Operation Mode	Automatic
Contact Type	Normally Open
Connector Type	Pin
Terminal	Screw
Circuit Type	1-way
Mounting Type	Surface Mount
Contact Material	Copper, Silver, Gold
Package Dimensions	3.35 x 3.27 x 1.61 inches
Item Weight	1.62 ounces

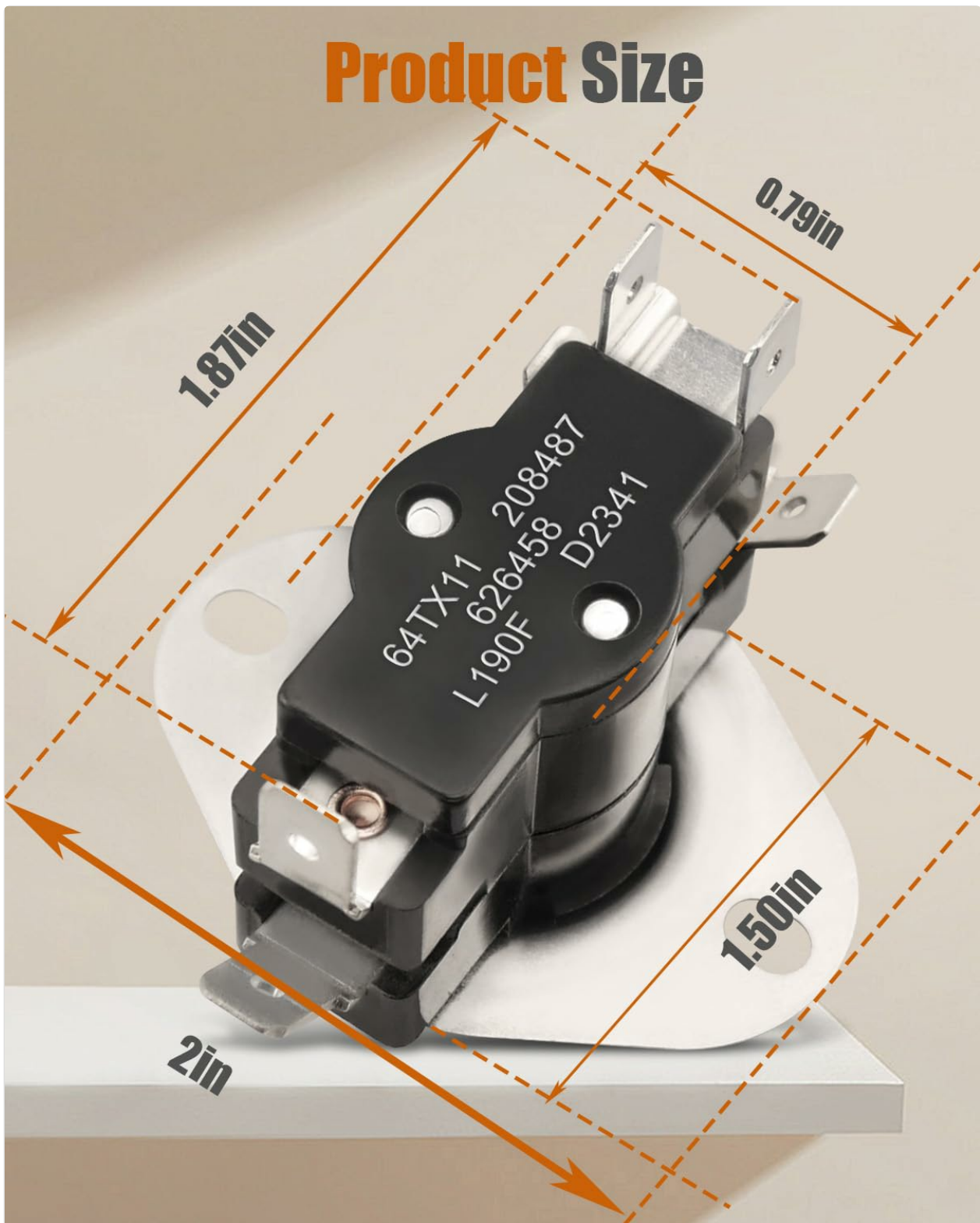


Image 4.1: Diagram illustrating the precise dimensions of the limit control switch, including measurements for length, width, and height.

## 5. PACKAGE CONTENTS

---

Each package contains:

- 1 x Urnqowuy 626458R L190F Limit Control Switch

## 6. INSTALLATION (SETUP)

---

**WARNING: Before attempting any installation or maintenance, ensure the power supply to the appliance is completely disconnected to prevent electrical shock or injury.**

1. **Power Disconnection:** Locate the circuit breaker or fuse box for your furnace or heater and turn off the power. Verify that the power is off using a voltage tester.
2. **Access Old Part:** Carefully open the access panel of your furnace or heater to locate the existing limit control switch.
3. **Remove Old Part:** Disconnect any wiring from the old switch, noting their positions for reinstallation. Unscrew or unclip the old limit switch from its mounting.
4. **Install New Part:** Position the new Urnqowuy 626458R L190F Limit Control Switch in the same location as the old one. Secure it using the existing screws or clips.
5. **Reconnect Wiring:** Reconnect the wires to the new switch, ensuring they are securely attached to their correct terminals.
6. **Close Access Panel:** Close and secure the access panel of your appliance.
7. **Restore Power:** Restore power to the appliance at the circuit breaker or fuse box.
8. **Test Operation:** Monitor the appliance to ensure it operates correctly and the new limit switch functions as expected.



**Fit for Nordyne**

- B6BV-000K-B-10 E6-012**
- B6BV-000K-B-15 E6-015**
- B6BV-000K-C-10 E6-017**
- B6BV-000K-C-20 E6-020**
- E4-010 E4-012 E7-010**
- E4-015 E4-017 E4-020**
- E6-010**

Image 6.1: Visual guide demonstrating the process of replacing the limit control switch, including identifying the old part and installing the new one within the furnace wiring.

**7. OPERATION**

The Urnqowuy 626458R L190F Limit Control Switch operates automatically. When the temperature within the furnace or heater reaches 190°F (L190F), the switch will automatically open the circuit, cutting off power to prevent overheating. Once the temperature drops to a safe level, the switch will reset, allowing the appliance to resume normal operation. This automatic function ensures continuous safety without manual intervention.

**8. MAINTENANCE**

Regular maintenance of your heating system is recommended to ensure optimal performance and safety. For the limit control switch:

- **Annual Inspection:** Have a qualified technician inspect your heating system annually, including the limit control switch, for any signs of wear, corrosion, or damage.
- **Keep Clear:** Ensure the area around the limit switch is free from dust, debris, or obstructions that could interfere with its temperature sensing capabilities.
- **Avoid Tampering:** Do not attempt to bypass or alter the limit control switch, as this can compromise the safety of your heating system.

## 9. TROUBLESHOOTING

---

If your furnace or heater is not operating correctly, and you suspect an issue with the limit control switch, consider the following:

- **No Heat/Intermittent Operation:** If the furnace is not producing heat or cycles on and off frequently, the limit switch may be tripping due to overheating. This could indicate poor airflow, a dirty filter, or a malfunctioning blower motor. Address these underlying issues first.
- **Switch Not Resetting:** In rare cases, a limit switch might fail to reset after tripping. If the furnace remains off even after cooling down, the switch may need replacement.
- **Visual Inspection:** With power disconnected, visually inspect the switch for any obvious signs of damage, such as burnt terminals or a cracked housing.

**For complex issues or if you are unsure, it is always recommended to consult a certified HVAC technician.**

## 10. SAFETY INFORMATION

---

Please read and understand all safety instructions before installing or operating this product.

- Always disconnect power to the appliance before installation, inspection, or maintenance.
- This product should be installed by a qualified individual if you are not comfortable working with electrical components.
- Ensure all wiring connections are secure and comply with local electrical codes.
- Do not operate the appliance if the limit control switch is damaged or bypassed.
- Keep children and pets away from the appliance during installation and operation.

## 11. WARRANTY AND SUPPORT

---

For warranty information or technical support regarding your Urnqowuy 626458R L190F Limit Control Switch, please refer to the seller's return policy or contact the manufacturer directly through their official channels. Keep your purchase receipt as proof of purchase.

