



[Manuals.plus](#) /

> [jiteentarou](#) /

> jiteentarou 55-inch Glass Top Vanity Desk with Mirror and Lights User Manual

**jiteentarou B0DR7RL36Z**

# jiteentarou 55-inch Glass Top Vanity Desk with Mirror and Lights User Manual

Model: B0DR7RL36Z

Brand: jiteentarou

## INTRODUCTION

This manual provides detailed instructions for the assembly, operation, and maintenance of your jiteentarou 55-inch Glass Top Vanity Desk. Please read all instructions carefully before beginning assembly and retain this manual for future reference.

## SAFETY INFORMATION

Always follow the provided instructions and installation videos for safe assembly. Be cautious when handling electrical components and ensure proper grounding. Use appropriate lifting techniques when moving the vanity due to its heavy weight (approximately 124 pounds). Ensure all connections are secure before use. Keep children and pets away from the assembly area.

## PACKAGE CONTENTS

Before assembly, verify that all components listed in the packing list are present and undamaged. The package includes:

- Glass Top
- Light Bulbs (10 with 3 light settings)
- Charging Station (2 standard outlets, 2 USB ports)
- 9 Storage Drawers
- 6 Storage Shelves
- All necessary hardware and tools for assembly
- Assembly instructions

## SETUP AND ASSEMBLY

Assembly is required for this vanity desk. It is recommended to follow the step-by-step instructions provided in the included manual and the official installation videos.

## Assembly Overview

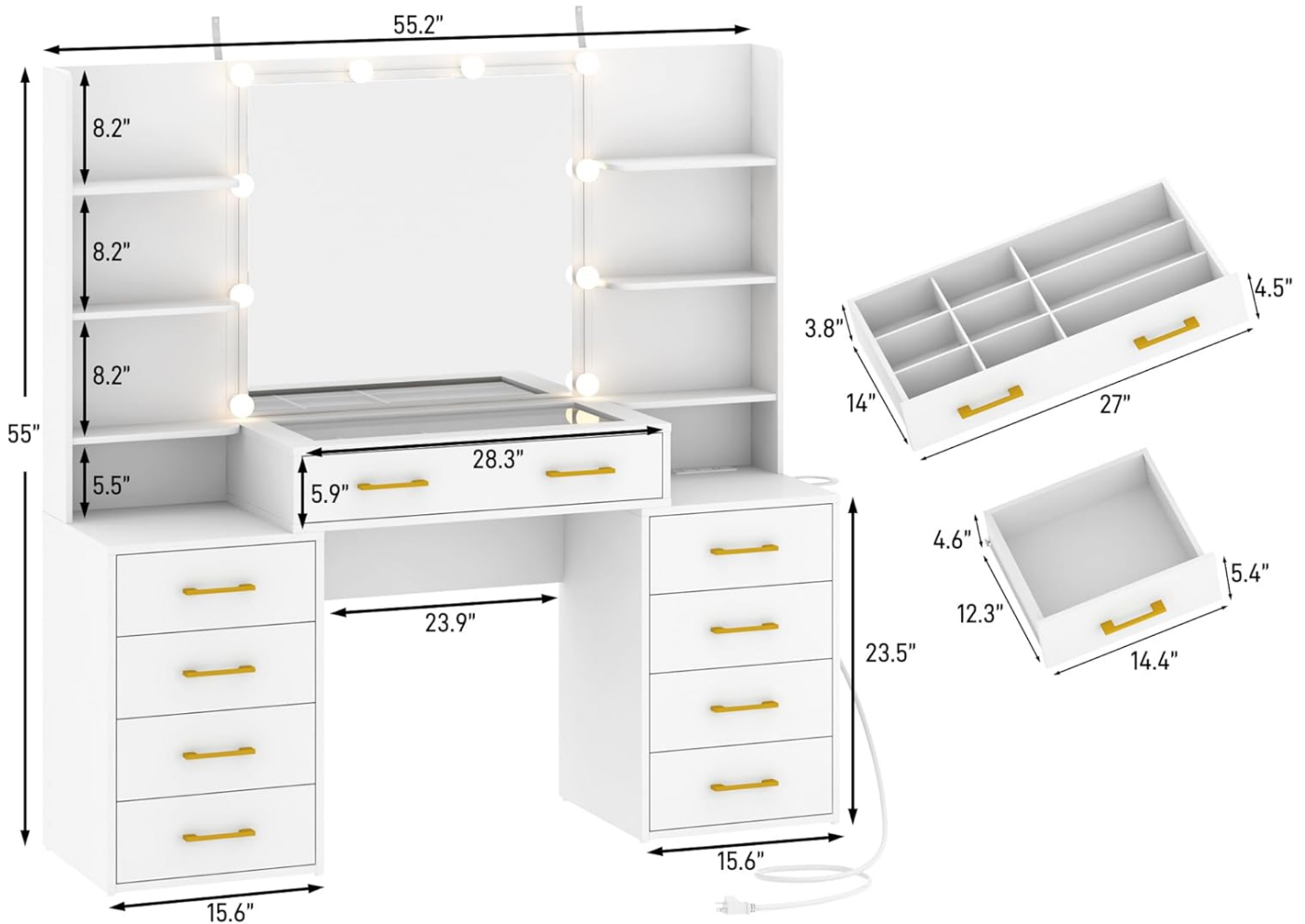


Figure 1: Exploded view of all vanity desk components and hardware. Each part is numbered for easy identification during assembly.

## Step-by-Step Assembly Videos

Your browser does not support the video tag.

Video 1: Detailed installation guide for the makeup desk. Follow each step carefully for correct assembly.

Your browser does not support the video tag.

Video 2: Additional vanity desk installation video, providing visual guidance for the assembly process.

## Key Assembly Points

- **Drawer Assembly:** Ensure drawer slides are correctly aligned and secured. The glass desktop allows visibility into the partitioned drawer, aiding organization.
- **Mirror and Shelves:** Attach the mirror securely to the main structure. Install the side shelves for additional storage.
- **Charging Station:** Integrate the built-in power outlet with 2 standard outlets and 2 USB ports into the designated compartment.
- **Light Bulbs:** Affix the 10 light bulbs around the mirror. Ensure wiring is neatly managed and secured.



**Extra large tempered glass countertops & partitioned drawer keep your belongings at a glance**

Figure 2: The glass top drawer features partitioned storage, ideal for organizing various cosmetics and accessories.

# Built-in charging station

Conveniently provide power for phones and hair dryers



Figure 3: The integrated charging station provides convenient power access for electronic devices and styling tools.

## OPERATING INSTRUCTIONS

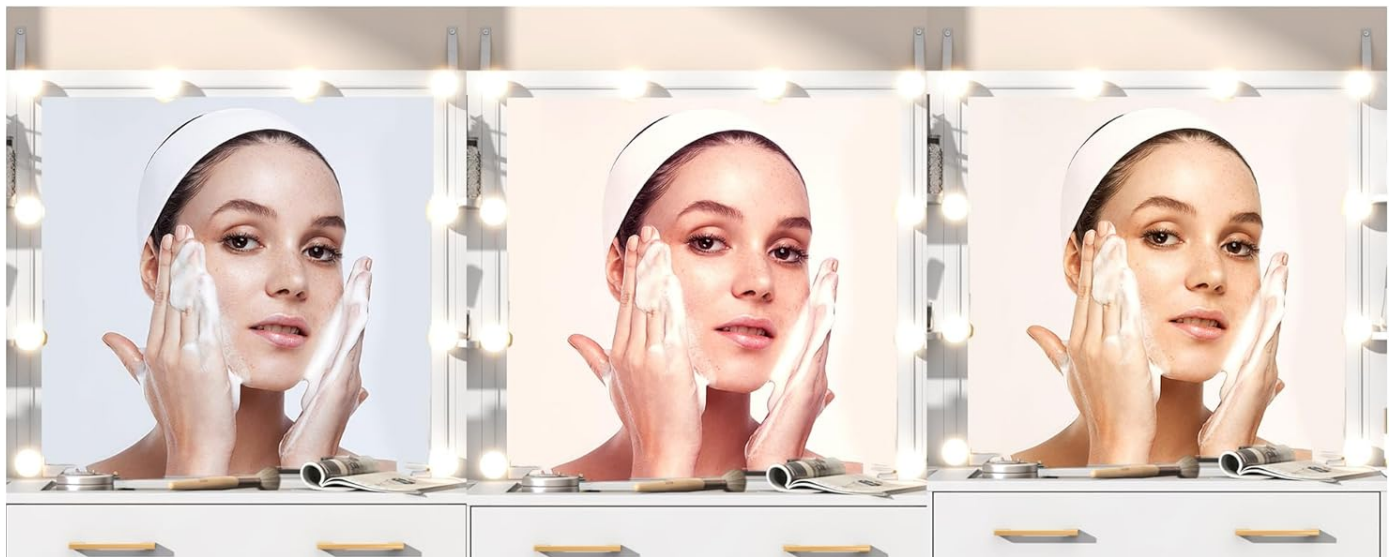
### Light Bulbs Operation

The vanity desk includes 10 light bulbs with adjustable settings to suit different makeup needs:

- **Cool White:** Ideal for formal makeup application.
- **Warm White:** Suitable for skincare routines or daily makeup.
- **Warm Yellow:** Best for evening makeup or party looks.

Press the switch to cycle through the light settings and adjust brightness as desired.

## 3 Light Color and Adjustable Brightness



Cool White

Warm White

Warm Yellow



0-100% Brightness Adjustable

### Key Control



- + Enhance Brightness
- Change Color
- Diminish Brightness
- Power Switch

Figure 4: Control panel for light settings and brightness adjustment, offering versatile illumination options.

### Charging Station Usage

The built-in power outlet features 2 standard AC outlets and 2 USB ports. Use these to power your hair dryer, curling iron, mobile phone, or other electronic devices conveniently while getting ready.

### MAINTENANCE

To ensure the longevity and appearance of your vanity desk:

- Wipe surfaces regularly with a soft, damp cloth. Avoid harsh chemicals or abrasive cleaners.
- For the glass top, use a glass cleaner to maintain clarity.
- Periodically check all screws and fasteners to ensure they remain tight. Re-tighten if necessary.
- Keep the vanity away from direct sunlight and excessive moisture to prevent damage to the engineered wood.
- Avoid placing extremely hot or cold items directly on the surface without protective coasters.

## TROUBLESHOOTING

If you encounter any issues with your vanity desk, please refer to the following common solutions:

- **Loose Parts:** If any parts feel loose after assembly, re-check the corresponding steps in the assembly instructions and tighten all screws.
- **Drawer Malfunction:** Ensure drawer slides are properly installed and lubricated if necessary. Check for any obstructions.
- **Light Bulbs Not Working:** Verify that the power cord is securely plugged into a working outlet and the light control switch is turned on. Check for any loose bulb connections.
- **Charging Station Not Functioning:** Confirm the power strip is correctly connected and receiving power. Test with different devices.

For further assistance, please contact customer support.

## SPECIFICATIONS

Feature	Detail
Color	White
Size (D x W x H)	15.7"D x 55"W x 55.2"H
Material	Engineered Wood
Item Weight	124 Pounds
Number of Drawers	9
Included Components	Glass Top, Light Bulbs, Charging Station, Drawers
Required Assembly	Yes

## WARRANTY AND SUPPORT

The manufacturer, jiteentarou, provides support for this product. If any board is damaged in transit, there is no need to send it back; simply click the "contact seller" option on your order detail page, and a replacement will be resent for free. For any questions or issues, a quick solution is typically provided within 24 hours.

This product is also Verified by Transparency, meaning each item has a unique code verified before shipping.