

Edifier K750W

Edifier K750W Feedback Wireless Headset User Manual

Model: K750W

INTRODUCTION

Thank you for choosing the Edifier K750W Feedback Wireless Headset. This manual provides detailed instructions on how to set up, operate, and maintain your headset to ensure optimal performance and longevity. The K750W is designed for clear communication and immersive audio, featuring AI noise cancellation, a detachable boom mic, and extended battery life, making it ideal for work, study, and entertainment.



The Edifier K750W Wireless Headset, showcasing its sleek black design and the detachable boom microphone.

WHAT'S IN THE BOX

Please check the contents of your package to ensure all items are present:

- Edifier K750W Headset
- Detachable Microphone
- Foam Windscreen for Microphone
- Type-C Charging Cable
- User Manual (this document)

PRODUCT OVERVIEW

Familiarize yourself with the key features and components of your Edifier K750W headset.



The Edifier K750W headset with the detachable boom microphone connected, ready for use.

Key Features:

- **AI-Enhanced Clear Calls:** Dual built-in microphones with AI noise cancellation for clear communication.
- **Detachable Rotating Boom Mic:** Adjustable microphone with foam windscreen for noise reduction and versatile use.
- **40mm Dynamic Drivers:** Delivers balanced, full-range stereo audio.
- **Extended Playback:** Up to 55 hours of music or 33 hours of talk time.
- **Ergonomic Comfort Design:** Lightweight (178g) with memory foam ear cushions for prolonged comfort.
- **Stable Bluetooth 5.4 & Multipoint:** Seamlessly switch between two connected devices.
- **EDIFIER ConneX App:** Customize EQ, rename headphones, and access other features.

SETUP GUIDE

1. Initial Charging

Before first use, fully charge your headset. Connect the provided Type-C charging cable to the headset's charging port and the other end to a USB power source (e.g., computer USB port, USB wall adapter).

- A full charge takes approximately 2.5 hours.
- The LED indicator will show charging status (refer to the LED indicator section for details).
- A 10-minute fast charge provides approximately 4.5 hours of playback.



The Edifier K750W headset being charged via its USB-C port, illustrating the fast charging capability.

2. Attaching the Microphone

The K750W features a detachable boom microphone for versatility.

1. Locate the microphone input port on the left earcup.
2. Align the 3.5mm jack of the boom microphone with the port and gently push until it clicks into place.
3. Attach the foam windscreen to the microphone for improved voice clarity and noise reduction.
4. Adjust the flexible microphone arm to position it optimally near your mouth.

To remove the microphone, gently pull it out from the port. The headset will automatically switch to music mode when the microphone is detached.

3. Bluetooth Pairing

Pair your headset with your device (smartphone, laptop, tablet, etc.) via Bluetooth.

1. **Power On:** Press and hold the multi-function button on the headset until the LED indicator flashes, indicating it's in pairing mode.
2. **Enable Bluetooth:** On your device, go to Bluetooth settings and ensure Bluetooth is enabled.
3. **Select Device:** Look for "Edifier K750W" in the list of available devices and select it to connect.
4. **Confirmation:** The LED indicator on the headset will turn solid blue, and you will hear an audio prompt confirming successful pairing.

Multipoint Connection: The K750W supports connecting to two devices simultaneously. After pairing with the first device, put the headset back into pairing mode and connect to the second device. The headset will intelligently switch between audio sources.

Specification

Bluetooth	V5.4
Bluetooth Protocol	A2DP, AVRCP, HFP
Audio Coding	SBC
Bluetooth Range	10m
Frequency Response	20Hz - 20kHz
Sound Pressure Level	92 ± 3dB (A)

Playtime	55hrs (Music Mode), 33hrs (Sidetone Mode)
Fast Charging	10mins = 4.5hrs
Charging Time	about 2.5 hrs
Input	DC 5V=200mA
Charging Port	USB-C

The Edifier K750W headset demonstrating its multipoint connection capability, linked to both a smartphone and a laptop.

4. EDIFIER ConneX App Installation

Enhance your experience by installing the EDIFIER ConneX App. The app allows for customization of sound settings, device renaming, and other advanced features.

- Scan the QR code in the manual or visit [Edifier's official app download page](#) to download the app.
- Install the app on your smartphone or tablet.
- Ensure your headset is connected via Bluetooth to your device, then open the app. It should automatically detect your K750W headset.



Screenshots of the EDIFIER ConneX App, showing options for sound effects and device management.

OPERATING INSTRUCTIONS

Controls

The Edifier K750W features intuitive button controls located on the earcups:

Button/Control	Function
Multi-function Button (Power Button)	Press and hold: Power On/Off, Enter Pairing Mode Single press: Play/Pause music, Answer/End call Double press: Reject call
Volume Up (+)	Single press: Increase volume Press and hold: Next track

Button/Control	Function
Volume Down (-)	Single press: Decrease volume Press and hold: Previous track
Microphone Mute (on boom mic)	Toggle switch: Mute/Unmute microphone

Call Functions

When the detachable microphone is attached, the headset is optimized for calls:

- **Answering/Ending Calls:** Press the multi-function button once.
- **Rejecting Calls:** Double-press the multi-function button.
- **Sidetone Feature:** Enabled via the EDIFIER ConneX App, this feature allows you to hear your own voice during calls, which can help with pronunciation and natural conversation flow.



Visual representation of AI Call Noise Cancellation, highlighting clear voice transmission.

Music Playback

Enjoy high-quality stereo sound for music, podcasts, and other audio content:

- **Play/Pause:** Single press the multi-function button.
- **Next Track:** Press and hold the Volume Up (+) button.
- **Previous Track:** Press and hold the Volume Down (-) button.
- **Volume Adjustment:** Single press Volume Up (+) or Volume Down (-) buttons.



A detailed view of the 40mm composite dynamic driver, responsible for rich and detailed audio output.

MAINTENANCE

Proper care will extend the life and performance of your Edifier K750W headset.

Cleaning

- Use a soft, dry cloth to clean the surfaces of the headset.
- For ear cushions, gently wipe with a slightly damp cloth and allow to air dry completely before use.
- Do not use harsh chemicals, cleaning solvents, or strong detergents.
- Avoid getting moisture into the charging port or microphone jack.

Storage

- Store the headset in a cool, dry place, away from direct sunlight and extreme temperatures.
- When not in use for extended periods, it is recommended to fully charge the headset every few months to preserve battery health.
- Keep the detachable microphone and foam windscreen in a safe place to prevent loss or damage.

Battery Care

- Avoid completely draining the battery frequently.
- Use only the provided Type-C charging cable or a certified equivalent.
- Do not expose the battery to high temperatures or dispose of it in fire.

TROUBLESHOOTING

If you encounter any issues with your Edifier K750W headset, please refer to the following common solutions:

Problem	Possible Cause & Solution
Headset does not power on.	Low Battery: Charge the headset for at least 10 minutes, then try again. Power Button Issue: Ensure you are pressing and holding the multi-function button for sufficient time (approx. 3-5 seconds).

Problem	Possible Cause & Solution
Cannot pair with device.	Headset not in Pairing Mode: Ensure the headset LED is flashing, indicating pairing mode. Device Bluetooth Off: Turn off and on Bluetooth on your device. Too Far: Ensure headset is within 10 meters of the device. Interference: Move away from other wireless devices. Previous Connections: Clear previous Bluetooth connections on your device and try pairing again.
No sound or low volume.	Volume Levels: Increase volume on both the headset and the connected device. Incorrect Audio Output: Ensure "Edifier K750W" is selected as the audio output device on your computer/smartphone. Re-pair: Disconnect and re-pair the headset.
Microphone not working.	Microphone Attached: Ensure the detachable boom microphone is securely attached. Mute Switch: Check if the microphone mute switch is in the "unmute" position. Input Device: On your computer, ensure "Edifier K750W" is selected as the input (microphone) device in sound settings. App Settings: Check microphone settings within the EDIFIER ConneX App if applicable.
Sound quality is poor.	Distance/Obstacles: Reduce distance between headset and device, remove obstacles. Interference: Move away from other wireless devices. Audio Source Quality: Ensure the audio source itself is of good quality. EQ Settings: Adjust EQ settings via the EDIFIER ConneX App.

If the problem persists after trying these solutions, please contact Edifier customer support for further assistance.

SPECIFICATIONS

Detailed technical specifications for the Edifier K750W headset:

Feature	Detail
Model Name	K750W
Connectivity Technology	Wireless (Bluetooth)
Bluetooth Version	5.4
Bluetooth Protocols	A2DP, AVRCP, HFP
Bluetooth Range	10 Meters
Audio Driver Type	Dynamic Driver
Audio Driver Size	40 Millimeters
Frequency Range	20Hz-20kHz
Impedance	32 Ohm

Feature	Detail
Noise Control	AI Noise Cancellation (for mic)
Battery Life (Music Mode)	Up to 55 Hours
Battery Life (Sidetone Mode)	Up to 33 Hours
Fast Charging	10 mins = 4.5 hrs playback
Charging Time	Approx. 2.5 hours
Charging Port	USB-C
Item Weight	178g (approx. 6.3 ounces)
Ear Placement	Over Ear
Control Type	Volume Control, App, Button
Compatible Devices	Cellphones, Tablets, Laptops, Desktops

WARRANTY AND SUPPORT

Edifier products are designed for durability and performance. For warranty information and customer support, please refer to the following resources:

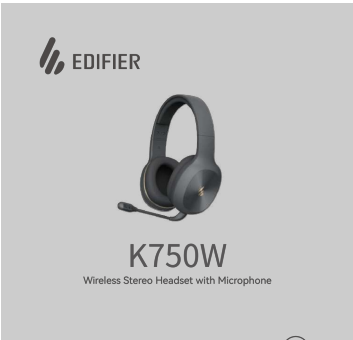
- **Warranty Information:** Please refer to the warranty card included with your product or visit the official Edifier website for detailed warranty terms and conditions.
- **Online Support:** For frequently asked questions, troubleshooting guides, and software updates, visit the Edifier support page on their official website.
- **Contact Support:** If you require further assistance, you can contact Edifier customer service directly. Contact details are typically available on the official Edifier website or within the EDIFIER ConneX App.
- **Product Registration:** Consider registering your product on the Edifier website to receive updates and support.

For additional information, you may also visit the [Edifier Store on Amazon](#).

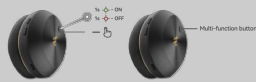
© 2025 Edifier. All rights reserved.

Edifier and the Edifier logo are trademarks of Edifier International Limited.

Documents - Edifier – K750W



EN 1. Power ON/OFF



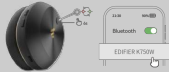
Press and hold the MFB to power on/off.

2. First pairing



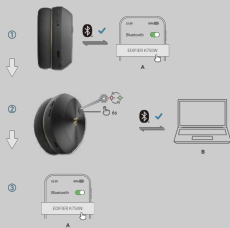
1. Once powered on, the headphones will automatically enter Bluetooth pairing mode.
2. Select "EDIFIER K750W" from your device list to connect.

3. Pairing for new device



1. In OFF state, press and hold the MFB for 6s to enter Bluetooth pairing mode.
 2. Select "EDIFIER K750W" from your device list to connect.
- Note: For subsequent use, the headphones will automatically connect to the device used last time.

4. Multipoint connection



1. Pair device A with the headphones successfully.
 2. In OFF state, press and hold the MFB for 6s to enter Bluetooth pairing mode, then select "EDIFIER K750W" in device B settings to connect.
 3. Select "EDIFIER K750W" again in device A settings to connect, and the multipoint connection is done.
- Note: For subsequent use, the headphones will automatically reconnect to the two devices used last time.

5. Controls



- Note:
1. "x" 1 Press, "x 2" Double press, "-" Press and hold;
 2. Default sound mode: Sidetone mode
 3. Download EDIFIER ConneX App to customize more control settings.

6. Reset



1. In ON state, press the "+" and "-" buttons simultaneously for about 5 seconds to finish reset.
2. The headphones will automatically enter Bluetooth pairing mode if successful.

7. Charging

[Edifier K750W Wireless Stereo Headset with Microphone User Manual](#)

This user manual provides instructions for the Edifier K750W Wireless Stereo Headset with Microphone, covering power on/off, Bluetooth pairing, multipoint connection, controls, reset, and charging.

lang:en score:48 filesize: 620.07 K page_count: 8 document date: 2025-03-10



Connect the headphones to a power source via the USB-C cable for charging.

Notes:

1. Make sure the USB-C port is completely dry before charging.
2. The headphones are powered off during charging.

K750W 1. Ligar/Desligar



Pressione e mantenha pressionado o MFB para ligar/desligar.

2. Primeiro emparelhamento



1. Uma vez ligados, os fones de ouvido entrarão automaticamente no modo de emparelhamento de Bluetooth.
2. Selecione "EDIFIER K750W" na sua lista de dispositivos para conectar.

3. Emparelhamento em um novo dispositivo



1. Com os fones de ouvidos desligado, pressione e mantenha pressionado o MFB por 6 segundos para entrar no modo de emparelhamento Bluetooth.
2. Selecione "EDIFIER K750W" na sua lista de dispositivos para conectar.

Nota: Para uso posterior, os fones de ouvidos se conectarão automaticamente ao dispositivo utilizado na última vez.

4. Conexão multiponto



1. Emparelhamento do dispositivo A ao fone de ouvido bem-sucedido.
2. Com os fones de ouvidos desligado, pressione e mantenha pressionado o MFB por 6s para entrar no modo de emparelhamento Bluetooth e, em seguida, selecione "EDIFIER K750W" nas configurações do dispositivo B para se conectar.
3. Selecione "EDIFIER K750W" novamente nas configurações do dispositivo A para conectá-lo e concluir a conexão multiponto de dispositivos.

Nota: Nas utilizações posteriores, os fones de ouvido irão reconectar-se automaticamente aos dois últimos dispositivos usados pela última vez.

5. Controles



Nota:

1. "x 1" Pressione, "x 2" Pressione duas vezes, "—" Mantenha pressionado.
2. Modo de som padrão: Modo sidetone.
3. Faça o download do App EDIFIER Connect para obter mais configurações de controle personalizáveis.

6. Reiniciar

[\[pdf\]](#) User Manual

Manual K750W edifierbr br 2025 05 |||

K750W 1. Ligar/Desligar 1s ON 1s OFF - Boto multifuncional Pressione e mantenha pressionado o MFB para ligar/desligar. 2. Primeiro emparelhamento Bluetooth

EDIFIER K750W 1. Uma vez ligados, os fones de ouvido entraro automaticamente no modo de emparelhamento de Bluetooth. 2. Selecione EDIFIE...

lang:pt score:43 filesize: 271.72 K page_count: 1 document date: 0000-00-00



1. Com o aparelho LIGADO, pressione os botões "+" e "-" simultaneamente por cerca de 5 segundos para concluir a redefinição.
2. O fone de ouvido entrará automaticamente no modo de emparelhamento Bluetooth se o procedimento for bem-sucedido.

7. Carregamento



- Conecte o fone de ouvido a uma fonte de energia pelo cabo USB-C para carregá-lo.
- Nota:
1. Certifique-se de que a porta USB-C esteja completamente limpa e seca antes de carregar.
 2. Os fones de ouvido são desligados durante o carregamento.

[\[pdf\]](#) User Manual

K750W User manual D1iFPcmjfnLm media amazon images I D1iFPcmjfnL ref dp product quick view |||

K750W Wireless Stereo Headset with Microphone Manual EN 1. Power ON/OFF 1s ON 1s OFF - Multi-function button Press and hold the MFB to power on/off. 2. First pairing Bluetooth EDIFIER **K750W** 1. Once powered on, the headphones will automatically enter Bluetooth pairing mode. 2. Select EDIFIER ...



[\[pdf\]](#) User Manual

K750W User manual Edifier Wireless Stereo Headset with Detachable Swivel Microphone AI Call Noise Cancellation 55 Hours Battery Life Bluetooth 5.4 and Multi Point Connection Grey be Electronics
D1iFPcmjfnL m media amazon images I |||

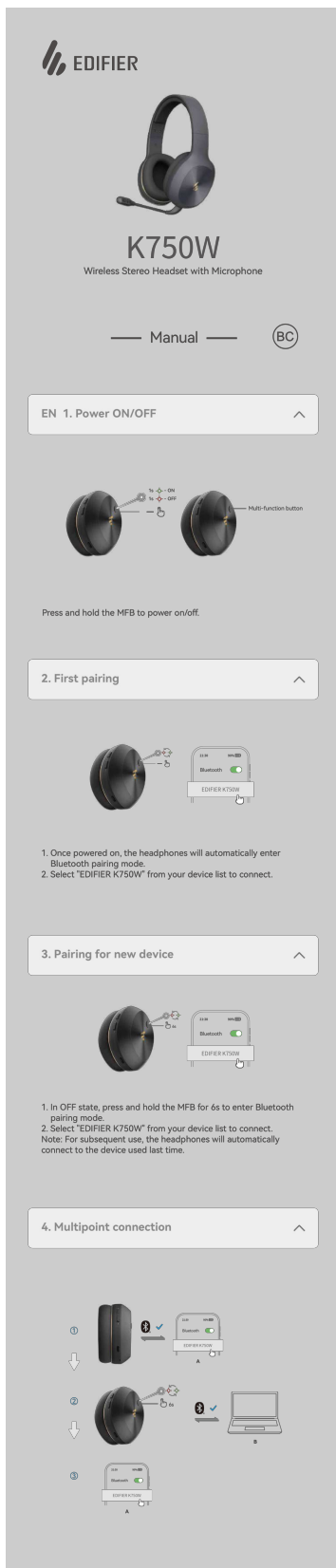
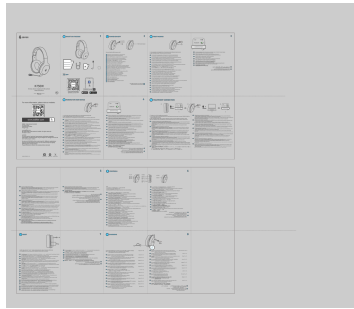
K750W Wireless Stereo Headset with Microphone Manual EN 1. Power ON/OFF 1s ON 1s OFF - Multi-function button Press and hold the MFB to power on/off. 2. First pairing Bluetooth EDIFIER **K750W** 1. Once powered on, the headphones will automatically enter Bluetooth pairing mode. 2. Select EDIFIER ...
lang:en score:39 filesize: 8.97 M page_count: 8 document date: 2025-02-11

[\[pdf\]](#) User Manual

K750W User manual printed edifier k750wUnduh EDIFIER ConneX App untuk mendapatkan pengaturan kontrol yang lebih mudah disesuaikan 1 11 2F 2 3 EDIFIER C1H5rigUs4Lm media amazon images I C1H5rigUs4L ref dp product quick view |||

K750W Wireless Stereo Headset with Microphone Model: EDF200120 WHAT S IN THE BOX APP EDIFIER ConneX Scan and download EDIFIER ConneX APP EDIFIER ConneX 1 POWER ON/OFF 1s ON 1s OFF - Press and hold the MFB to power on/off. FR Maintenez le bouton MFB appuy pour allumer/teindre. ES Manteng...

lang:en score:37 filesize: 4.85 M page_count: 1 document date: 2025-02-08



[Edifier K750W Wireless Stereo Headset with Microphone User Manual](#)

Comprehensive user manual for the Edifier K750W Wireless Stereo Headset with Microphone, covering power, pairing, multipoint connection, controls, reset, charging, and microphone usage.

2. In OFF state, press and hold the MFB for 6s to enter Bluetooth pairing mode, then select "EDIFIER K750W" in device B settings to connect.

3. Select "EDIFIER K750W" again in device A settings to connect, and the multipoint connection is done.
Note: For subsequent use, the headphones will automatically reconnect to the two devices used last time.

5. Controls

Call

45h

45h

45h

Music

45h

45h

45h

Mode

45h

45h

45h

Note:

1. "x 1" Press, "x 2" Double press, "-" Press and hold;

2. Default sound mode: Sidetone mode

3. Download EDIFIER ConnEX App to customize more control settings.

6. Reset

5s

x6

1. In ON state, press the "+" and "-" buttons simultaneously for about 5 seconds to finish reset.

2. The headphones will automatically enter Bluetooth pairing mode if successful.

7. Charging

Input: 5V=1A

Connect the headphones to a power source via the USB-C cable for charging.

Note:

1. Make sure the USB-C port is completely dry before charging.

2. The headphones are powered off during charging.

8. Mic boom insertion/removal

Align the mic boom connector with the corresponding jack on the headset and insert it straight in until firmly seated.

Note:

To prevent connection loosening caused by connector wear, please remove the mic boom by pulling it straight out without twisting.

CE

ДЕКЛАРАЦИЯ НА ЕС ЗА СЪОТВЕТСТВИЕ

1. Номер на модела, търговска марка:
Търговска марка: EDIFIER
Име на модела: EDF20120

2. Име и адрес на производителя:
Име на производителя: Edifier International Limited
Адрес: P.O. Box 6264 Главна поща, Хонгконг

3. Тази декларация за съответствие се издава изцяло под отговорност на производителя.

4. Обект на декларацията:
Име на продукта: Безжичен стерео слушалки с микрофон
Име на модела: EDF20120
Име на произведението: K750W

5. Предметът на декларацията, описан по-горе, е в съответствие със съответната директива на Съюза за хармонизация и друго законодателство на Съюза за хармонизация, когато е приложимо.
Директива за радиооборудване 2014/53/EU
Директива RoHS
6. Препратки към съответните хармонизирани стандарти или използвани общи спецификации или препратки към други технически спецификации, по отношение на които е декларирано съответствие:
Директива за радиооборудване
EN 55032: 2015-A11:2020-A1:2020; EN 55030:3-3: 2013-A1:2019-A2:2021; EN IEC 61000-3-2: 2019-A1:2021; EN 55035: 2017-A1:2020; EN 301 489-1 V2.2.1; EN 301 489-17 V3.1.1; EN 300 352 V2.2.2; EN 62479:2010; EN IEC 62368-1:2020-A1:2020; EN IEC 62680-1:2022

Директива RoHS
Ограничения за употреба на определени опасни вещества в електрическо и електронно оборудване, 2011/65/EU Приложение II и нейното изменение Директива (ЕС) 2015/863, както и изключенията, свързани с RoHS EN IEC 63000: 2016.

7. Лице за уведомяване за съответствие на ЕС:
Име: THEMIS AT Unternehmensberatung
Име на контакт: Кристиан Динке
Адрес: Backsteinweg 84, 40468, Германия
Електронна поща: krd@themis.com
Име: Edifier International Limited

Град: Мюнхен, Германия
29.05.2025г.

L. Langling

Упълномощен на

Директор на

Dongguan 2025-3-4

[pdf]

fIeI JIAPAI MfI HA EC 3A CboTBETCTBME JAR Computers Trademark EDIFIER Model Name EDF200120 2 and address of the manufacturer Edifier International Limited Address P O Box 6264 sertifikat k750w 1749855518 jarcomputers images custom docs |||

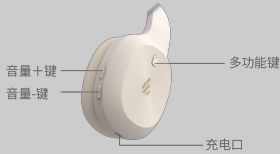
fIeI JIAPAI MfI HA EC 3A CboTBETCTBME 1. HOMep Ha Mofleiiia, TbproBCKa MapKa: TbproBci a MapKa: EDIFI ... a npoAyRTa: Ee3xMLIHM cTepeo ciiyLLiani M c MMI pocPoH MMe Ha MOAeJia: EDF200120 MMe Ha npoAax6MTe: **K750W** 5. npeflMeTbT Ha AeKJiaпauMflTa, onMcaHa no-roпe, e a cboTBeTCTBMe cbc cboTBeTHaTa 4MpeKTMBa H...

lang:en score:31 filesize: 1.1 M page_count: 4 document date: 2025-05-29



K750W
头戴蓝牙背浦耳机

▼ 产品说明及配件



■ 配件：耳机X1 咪棉X1 咪杆X1 充电线X1 说明书X1 保修卡X1

• 注：
本说明书中的图片均为示意图，可能与实物有偏差，
请以实物为准。

▼ 开关机

- 开机 长按多功能按键约3秒，绿灯亮1秒；
- 关机 长按多功能按键约3秒，红灯亮1秒。



▼ 充电



- 耳机充电
 - 接入标配的充电线为耳机充电。
 - 充电时，指示灯常亮；
 - 充满后，指示灯熄灭。

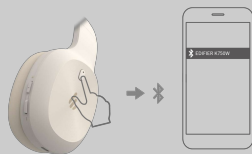
输入：5V = 1A



警告：本产品的可充电电池必须妥善处置，以便回收利用，请不要将电池放入火中，以免引起爆炸。

▼ 操作说明

■ 蓝牙配对



- 首次蓝牙配对
关机状态，长按多功能按键约3秒，此时红绿灯快闪；
手机搜索“EDIFIER K750W”选择连接，连接成功后
绿灯间隔5秒闪2次。
- 连接其他蓝牙新设备
下次开机自动回连上一次连接的设备，关机状态下长按
多功能键6S进行新设备连接，红绿灯交替闪烁。
- 一拖二连接
 - 将A手机与耳机配对连接，成功后耳机关机，再长按耳机
多功能键重启耳机并直接进入蓝牙配对模式；

[\[pdf\]](#)

K750W V1 0

13 nov 2023 —

2023111310424416998433640126 cn oss edifier Uploads images 11 |||

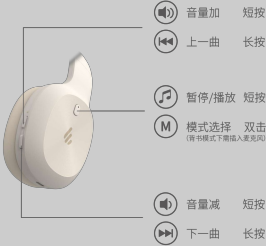
K750W - X1 X1 X1 X1 X1 X1 31 31 : 5V 1A EDIFIER **K750W** 3 EDIFIER **K750W** 52
6SLED A B A - 5 6 // , 10 AVRCP Audio/Video Remote Control Profile : 68 : : 2 :

- 通过B手机搜索耳机并连接；
- 在A手机上操作，手动连接耳机；完成一拖二；

■ 恢复出厂设置

- 在开机状态下，同时长按“音量+”和“音量-”约5秒清除配对记录，绿灯闪6下，并进入搜索配对状态，红绿灯交替闪烁。

■ 音乐播放



■ 通话



▼ 常见问题解答

- 红色指示灯代替绿色指示灯闪烁。**
- 表示耳机电池低电量,您需要再次对耳机充电。

■ 耳机听不到声音。

- 确认耳机处于工作状态。
- 确认耳机的音量大小是否合适。
- 确认耳机是否与手机正常连接。
- 确认耳机在正常的工作范围。

■ 耳机通话效果不好。

- 确认手机是否在信号强的地区。
- 耳机的有效使用距离为10米,请确认耳机在有效使用距离内,且耳机与手机间无障碍物阻隔。

■ 为什么播放音乐时,耳机不能进行暂停、恢复、下一曲控制。

- 此功能需要与耳机配对的设备支持AVRCP(Audio/Video Remote Control Profile)协议。

▼ 保养与维修

- 带锂电池的产品若长时间不使用,请至少确保每三个月充一次电。
- 保持产品干燥,勿放在潮湿的地方,以免影响产品内部电路。
- 勿将产品放置在太阳直射或者温度高的地方。高温会缩短电子部件的使用寿命、损坏电池,使某些塑料部件变形。
- 勿将产品放在过冷的地方,以免损坏内部电路板。
- 勿试图拆开产品。如果非专业人员,可能会损坏产品。
- 不要跌落、强烈振动、用硬体撞击产品,以免会损坏内部电路。
- 勿使用腐蚀性化学制品、清洁剂清洁耳机。
- 不要用尖体在产品表面上乱划,以免损坏外壳和影响外观。



微信扫一扫, 更多信息

北京爱德发科技有限公司 出品

地 址: 北京市海淀区北四环西路68号

生产企业: 东莞市漫步者科技有限公司

地 址: 东莞松山湖高新技术产业开发区工业东路2号

执行标准: Q/HDADF 0005 www.edifier.com

商标说明: x-mall®、声动®、E®、EDIFIER®、漫步者®, 均为北京爱德发科技有限公司持有注册商标, 仿冒必究。

Q/HDADF 0005 www.edifier.com : ...

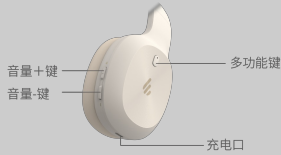
lang:en score:25 filesize: 172.35 K page_count: 1 document date: 2024-07-11



K750W

头戴蓝牙背通耳机

▼ 产品说明及配件

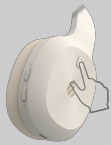


■ 配件：耳机X1 咪棉X1 咪杆X1 充电线X1 说明书X1 保修卡X1

• 注：
本说明书中的图片均为示意图，可能与实物有偏差，
请以实物为准。

▼ 开关机

- 开机 长按多功能按键约3秒，绿灯亮1秒；
- 关机 长按多功能按键约3秒，红灯亮1秒。



▼ 充电



- 耳机充电
 - 接入标配的充电线为耳机充电。
 - 充电时，指示灯常亮；
充满后，指示灯熄灭。

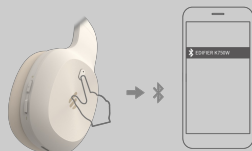
输入：5V = 1A



警告：本产品的可充电电池必须妥善处置，以便回收利用，
请不要将电池放入火中，以免引起爆炸。

▼ 操作说明

■ 蓝牙配对



- 首次蓝牙配对
关机状态，长按多功能按键约3秒，此时红绿灯快闪；
手机搜索“EDIFIER K750W”选择连接，连接成功后
绿灯间隔5秒闪2次。
- 连接其他蓝牙新设备
下次开机自动回连上一次连接的设备，关机状态下长按
多功能键6S进行新设备连接，红绿LED灯交替闪烁。

■ 一拖二连接

- 将A手机与耳机配对连接，成功后耳机关机，再长按耳机
多功能按键重启耳机并直接进入蓝牙配对模式；
- 通过B手机搜索耳机并连接；
- 在A手机上操作，手动连接耳机；完成一拖二；

■ 恢复出厂设置

- 在开机状态下，同时长按“音量+”和“音量-”约5秒
清除配对记录，绿灯闪6下，并进入搜索配对状态，
红绿灯交替闪烁。

[pdf]

W820NB

V1 0 2022 11 10

il y a 4 jours —

2023060714241216861190529697 cn oss edifier Uploads images 2023 06 07 |||

K750W - X1 X1 X1 X1 X1 X1 31 31 : 5V 1A EDIFIER **K750W** 3 EDIFIER **K750W** 52

6SLED A B A - 5 6 / / , 10 AVRCP Audio/Video Remote Control Profile : 68 : : 2 :

Q/HDADF 0005 www.edifier.com : ...

lang:en score:22 filesize: 30.63 M page_count: 1 document date: 2023-03-08

■ 音乐播放



音量加 短按

上一曲 长按

暂停/播放 短按

模式选择 双击
(音乐模式下需进入蓝牙模式)

音量减 短按

下一曲 长按

■ 通话



接听/挂断 短按

拒接 双击

▼ 常见问题解答

红色指示灯代替绿色指示灯闪烁。

- 表示耳机电池低电量,您需要再次对耳机充电。

耳机听不到声音。

- 确认耳机处于工作状态。
- 确认耳机的音量大小是否合适。
- 确认耳机是否与手机正常连接。
- 确认耳机在正常的工作范围。

耳机通话效果不好。

- 确认手机是否在信号强的地区。
- 耳机的有效使用距离为10米,请确认耳机在有效使用距离内,且耳机与手机间无障碍物阻隔。

为什么播放音乐时,耳机不能进行暂停、恢复、下一曲控制。

- 此功能需要与耳机配对的设备支持AVRCP(Audio/Video Remote Control Profile)协议。

▼ 保养与维修

- 带锂电池的产品若长时间不使用,请至少确保每三个月充一次电。
- 保持产品干燥,勿放在潮湿的地方,以免影响产品内部电路。
- 勿将产品放置在太阳晒射或者温度高的地方。高温会缩短电子部件的使用寿命、损坏电池、使某些塑料部件变形。
- 勿将产品放在过冷的地方,以免损坏内部电路板。
- 勿试图拆开产品。如果非专业人员,可能会损坏产品。
- 不要跌落、强烈震动、用硬体撞击产品,以免会损坏内部电路。
- 勿使用腐蚀性化学制品、清洁剂清洁耳机。
- 不要用尖体在产品表面上乱划,以免损坏外壳和影响外观。



微信扫一扫, 更多信息

北京爱德发科技有限公司 出品

地 址: 北京市海淀区北四环西路68号

生产企业: 东莞市漫步者科技有限公司

地 址: 东莞松山湖高新技术产业开发区工业东路2号

执行标准: Q/HDADF 0005 www.edifier.com

商标说明: X-treme™, 声动™, 6°, EDIFIER®, 漫步者®, 均为北京爱德发科技有限公司持有注册商标, 仿冒必究。

[pdf] Label

DK K0750W 0000 K750W 20241210 ol Label Edifier International Limited EDF271 Wireless Stereo Headset with Microphone Z9G Z9GEDF271 edf271

...

lang:en score:10 filesize: 1.1 M page_count: 1 document date: 2024-12-10

