

Edifier NeoBuds Planar

Edifier NeoBuds Planar Wireless Bluetooth Earbuds

Instruction Manual

1. INTRODUCTION

Welcome to the Edifier NeoBuds Planar instruction manual. This document provides comprehensive information on setting up, operating, and maintaining your new wireless earbuds. Please read this manual carefully to ensure optimal performance and longevity of your device.



Figure 1: Edifier NeoBuds Planar earbuds and charging case.

2. WHAT'S IN THE BOX

- Edifier NeoBuds Planar Earbuds
- Wireless Charging Case
- USB-C Charging Cable
- Various Sizes of Eartips (XS, S, M, L, XL)
- Protective Pouch

3. PRODUCT FEATURES

3.1 Revolutionary Planar Magnetic Drivers

Experience studio-quality sound with 12mm planar magnetic drivers, featuring a 2 μ m ultra-thin diaphragm for zero harmonic distortion and lifelike audio detail. The 2nd Gen EqualMass Wiring ensures uniform diaphragm motion across all frequencies, delivering balanced sound with unmatched clarity.

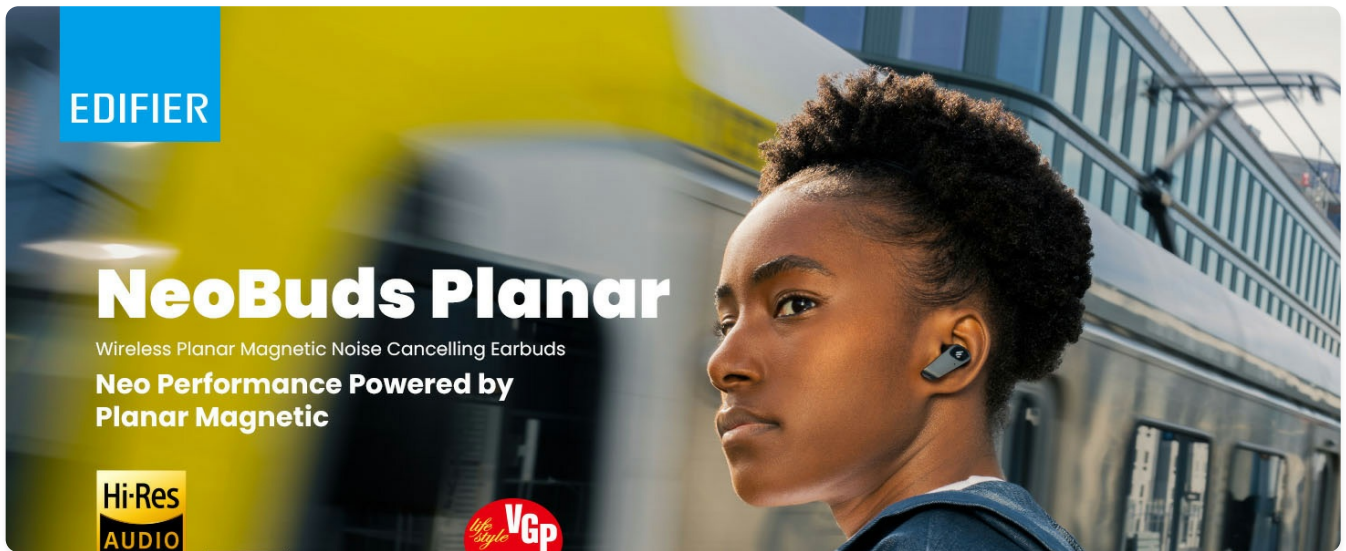


Figure 2: Internal structure of the planar magnetic driver.

3.2 Hi-Res Audio Wireless

Immerse yourself in lossless music with support for LDAC, LHDC 5.0, aptX, aptX Adaptive, aptX Lossless, aptX HD, and Snapdragon Sound technology for immersive, high-resolution audio. This ensures a crystal-clear listening experience across various devices.

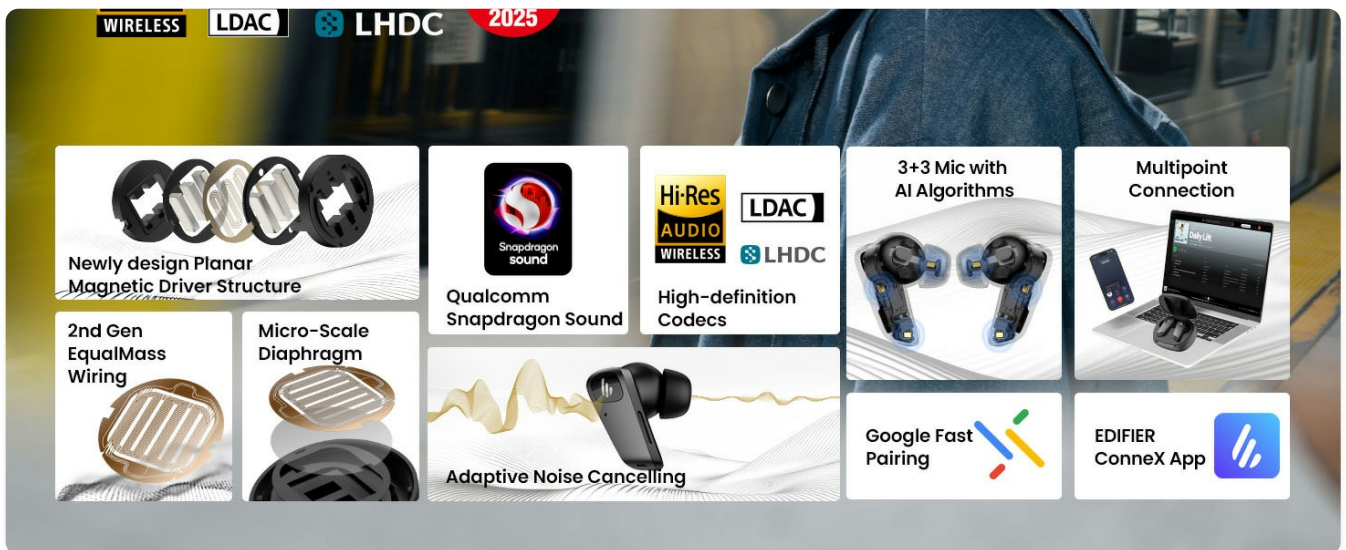


Figure 3: Earbuds supporting Hi-Res Audio Wireless codecs.

3.3 Hybrid Active Noise Cancellation (ANC)

The 3rd-gen Qualcomm Adaptive ANC intelligently adapts to your environment, effectively blocking distractions while preserving audio fidelity. This provides a truly immersive listening experience.

Hi-Fi Audio with Planar Magnetic Drivers

NeoBuds Planar integrates Edifier's industry-leading planar magnetic driver technology into true wireless earbuds, surpassing traditional dynamic drivers. With **12mm** modularized drivers and patented **EqualMass wiring**, they deliver exceptional clarity, reduced distortion, and high-fidelity sound.

Figure 4: Hybrid Active Noise Cancellation in action.

3.4 Crystal-Clear Calls

A 6-mic system with aptX Voice ensures studio-grade call quality, even in noisy environments. Voice enhancement algorithms precisely recognize and isolate your voice from background noise.

2nd Gen EqualMass Wiring

Our 2nd generation **EqualMass wiring** ensures uniform weight distribution and stability, reducing distortion and improving diaphragm movement. This optimization enhances resolution, setting a new audio excellence benchmark.

*Patent No: PCT/CN2021/124329

Figure 5: 6-mic system for clear hands-free calls.

3.5 Battery Life & Wireless Charging

Enjoy up to 30 hours of total playback time with the charging case. Fast charging provides 2 hours of playback with just 10 minutes of charge. The charging case also supports convenient wireless charging.

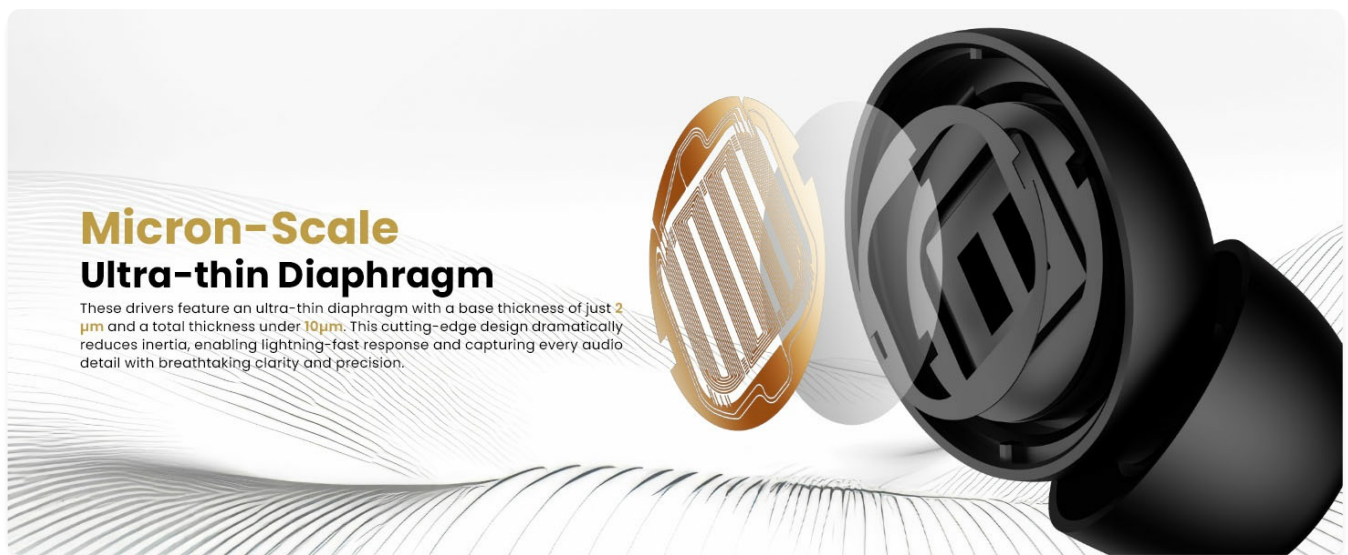


Figure 6: Earbuds and case on a wireless charging pad.

3.6 Bluetooth 5.4 & Dual-Device Connection

Benefit from ultra-stable connectivity with Bluetooth 5.4. The earbuds support seamless switching between two devices simultaneously, ideal for transitioning from work calls to your favorite music playlist.

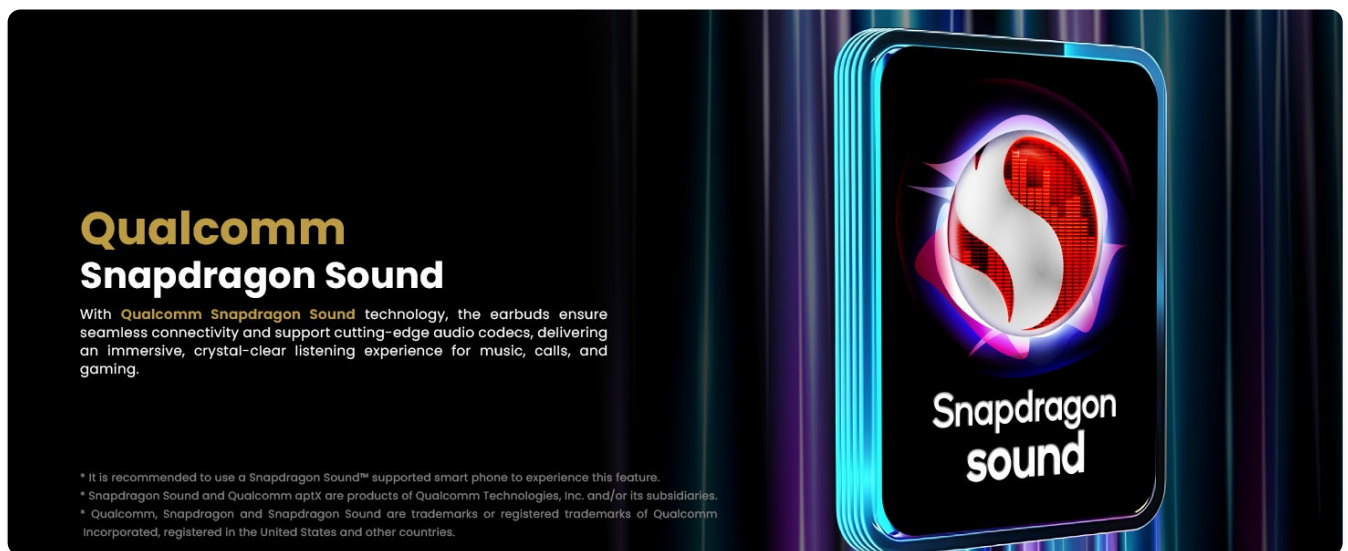


Figure 7: Multipoint connection with smartphone and laptop.

3.7 User-Friendly Design & Durability

The earbuds feature automatic pause/play when removed from or returned to the case. With an IP54 dust and water resistance rating, they are built for workouts, commutes, and daily adventures. A variety of ear tip sizes are available for selection to ensure a comfortable and secure fit.

Hi-Res Wireless Audio

NeoBuds Planar supports LHDC 5.0 decoding with up to **96Hz/24-bit** sampling, providing three times the data transmission of standard Bluetooth for richer details and clearer audio. It also supports LDAC and AAC, offering versatile options for high-quality sound.



* LDAC and LDAC logo are trademarks of Sony Corporation.

**Hi-Res Audio Wireless* Logo is used under license from Japan Audio Society.



Figure 8: Wear detection for automatic pause/play.

3.8 EDIFIER ConneX App

Personalize your listening experience via the EDIFIER ConneX app. It offers EQ customization, control settings, the ability to find lost earbuds, and LED light color controls for the charging case.

Multipoint Connection

Connect to **two devices simultaneously** via Bluetooth and switch smoothly from work calls to your favorite music playlist.



Figure 9: EDIFIER ConneX App interface for customization.

3.9 Google Fast Pair

For Android users, Google Fast Pair allows for quick and effortless pairing with your device in Bluetooth mode, simplifying the initial setup process.



Figure 10: Google Fast Pair in action.

4. SETUP

1. **Charging:** Before first use, fully charge the earbuds and charging case. Connect the USB-C cable to the case and a power source, or place the case on a wireless charging pad.
2. **Power On:** Open the charging case. The earbuds will automatically power on and enter pairing mode.
3. **Pairing:**
 - **For Android users (Google Fast Pair):** A notification will appear on your Android device. Tap to connect.
 - **For other devices:** Go to your device's Bluetooth settings and select "EDIFIER NeoBuds Planar" from the list of available devices.
4. **App Installation:** Download the "EDIFIER ConneX" app from your device's app store to unlock full customization features.

5. OPERATING INSTRUCTIONS

5.1 Touch Controls

The NeoBuds Planar feature intuitive touch controls on the earbuds. You can customize most functions via the EDIFIER ConneX app.



5.2 Noise Control Modes

Switch between different noise control modes using the touch controls or the app:

- **Adaptive Noise Cancellation:** Automatically adjusts noise cancellation based on your environment.
- **Noise Cancellation:** Provides maximum noise reduction.
- **Ambient Sound:** Allows you to hear your surroundings while listening to audio.
- **Wind Reduction:** Minimizes wind noise during calls or listening.
- **Noise Cancellation Off:** Disables all noise control features.

5.3 Gaming Mode

Activate Gaming Mode via the app for ultra-low latency (80 milliseconds), ensuring precise sound synchronization for an immersive gaming experience.

6. MAINTENANCE

- Clean the earbuds and charging case regularly with a soft, dry cloth.
- Avoid using abrasive cleaners or solvents.
- Keep the charging contacts on the earbuds and case clean and dry.
- Store the earbuds in their charging case when not in use to protect them and maintain battery life.
- Avoid exposing the earbuds to extreme temperatures or humidity.

7. TROUBLESHOOTING

- **No Sound:**
 - Ensure earbuds are charged and connected to your device.
 - Check device volume and media playback.
 - Try re-pairing the earbuds.
- **Connection Issues:**
 - Ensure Bluetooth is enabled on your device.
 - Move closer to your device (within 10 meters).
 - Clear previous Bluetooth connections on your device and re-pair.
 - Perform a factory reset (see app settings).
- **Noise Cancellation Not Effective:**
 - Ensure a proper seal with the correct ear tip size.
 - Check if Wind Reduction mode is active, as it reduces ANC strength.
 - Ensure both earbuds are worn for optimal ANC performance.
- **Microphone Issues:**
 - Ensure microphones are not obstructed.
 - Check call quality in different environments.

8. SPECIFICATIONS

Feature	Detail
Model	NeoBuds Planar (EDF200185)
Bluetooth Version	5.4
Audio Codecs	SBC, AAC, aptX, aptX Adaptive, aptX Lossless, LDAC, LHDC 5.0, Snapdragon Sound
Audio Driver Type	Planar Magnetic Driver
Audio Driver Size	12mm
Frequency Response	20 Hz - 40 KHz
Noise Control	Hybrid Noise Cancellation
Battery Life (Earbuds)	7.5 hours (ANC off), 5 hours (ANC on)
Total Playtime (with Case)	30 hours (ANC off), 20 hours (ANC on)
Charging Time	10 min charge = 2 hours playback
Water Resistance Level	IP54 (Dust and Water Resistant)
Control Type	Touch Control, App Control
Bluetooth Range	10 Meters
Audio Latency	80 Milliseconds (Gaming Mode)

9. WARRANTY AND SUPPORT

Edifier products come with a limited warranty. For detailed warranty information, product support, or service inquiries, please visit the official Edifier website or contact their customer support. Keep your proof of purchase for warranty claims.

Official Edifier Website: www.edifier.com

Related Documents - NeoBuds Planar

--	--



NeoBuds Planar

True Wireless Noise Cancelling Earbuds

Manual

EN 1. Power ON/OFF



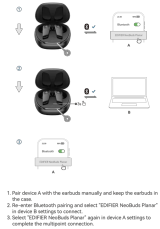
2. First pairing



3. Pairing for new device



4. Multipoint connection



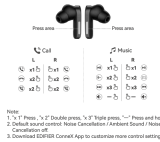
5. Reset/LightBright Connection



6. Charging



7. Controls



[EDIFIER NeoBuds Planar True Wireless Noise Cancelling Earbuds User Manual](#)

Explore the EDIFIER NeoBuds Planar user manual for detailed instructions on pairing, multipoint connection, controls, charging, and app customization for these true wireless noise-cancelling earbuds.



Sluchawki planarne TWS Edifier NeoBuds Planar ANC Instrukcja obsługi



[Instrukcja obsługi słuchawek Edifier NeoBuds Planar ANC TWS](#)

Szczegółowa instrukcja obsługi planarne TWS słuchawek Edifier NeoBuds Planar ANC, obejmująca konfigurację, parowanie, ładowanie, sterowanie, informacje o bezpieczeństwie i zgodności.

S3 Wireless Over-Ear Headphones

Manual



EN 1. Power ON/OFF



1. Press the Power button and hold the MFB button for 5s when power ON.
2. Press the Power button and hold the MFB button for 5s when power OFF.

2. Pairing



1. Press and hold the MFB button for 5s when power OFF and then ON.
2. Press the MFB button and hold the MFB button for 5s when power ON.
3. Press the MFB button and hold the MFB button for 5s when power ON.
4. Press the MFB button and hold the MFB button for 5s when power ON.

3. Reset



1. Press on and disconnect to any Bluetooth device.
2. Long-press the power button for 10s.
3. Press the power button for 10s.

4. Dual Connectivity



1. The device is used as a Bluetooth device. When you connect to the Bluetooth device, it will be used as a Bluetooth device.
2. Press the MFB button and hold the MFB button for 5s when power ON.
3. Press the MFB button and hold the MFB button for 5s when power ON.

5. Charge



1. Please connect the product to power source with the included Type-C charging cable for charging.
2. Press the MFB button and hold the MFB button for 5s when power ON.

6. AUX Cable



1. Connect the AUX cable to the headphones when power ON, and the headphones will switch to the AUX mode when power ON.
2. Press the MFB button and hold the MFB button for 5s when power ON.
3. Press the MFB button and hold the MFB button for 5s when power ON.

7. Controls



1. Press the MFB button and hold the MFB button for 5s when power ON.
2. Press the MFB button and hold the MFB button for 5s when power ON.
3. Press the MFB button and hold the MFB button for 5s when power ON.
4. Press the MFB button and hold the MFB button for 5s when power ON.

8. Ear cushion replacement method



For more information, please visit our website:

www.edifier.com



Model: S3001
© 2021 Edifier International Limited. All rights reserved.
Printed in China

NOTICE:
For the need of technical improvement and better upgrade,
Edifier will reserve the right to change the design of the product
without notice.
Product of EDI is not to be substituted for other trademarks.
Product of EDI is not to be substituted for other trademarks.
Product of EDI is not to be substituted for other trademarks.
Product of EDI is not to be substituted for other trademarks.

[Edifier STAX SPIRIT S3 Wireless Over-Ear Headphones User Manual](#)

Comprehensive user manual for the Edifier STAX SPIRIT S3 wireless over-ear headphones, covering power, pairing, reset, dual connectivity, charging, AUX usage, controls, and ear cushion replacement.



Sluchawki TWS Edifier
NeoBuds Pro 3 ANC
Instrukcja obsługi



[Instrukcja obsługi słuchawek TWS Edifier NeoBuds Pro 3 ANC](#)

Szczegółowa instrukcja obsługi słuchawek True Wireless Stereo (TWS) Edifier NeoBuds Pro 3 ANC, obejmująca konfigurację, parowanie, sterowanie, ładowanie, informacje dotyczące bezpieczeństwa i specyfikacje techniczne.

NeoBuds Planar 1. Używaj/Designuj



Alto su todo o case para la mejor experiencia.

2. Primeiro emparelhamento



1. Para usar o aplicativo, abra a tampa da caixa e mantenha o botão de toque pressionado por 5 segundos até que o LED vermelho no fundo da caixa esteja aceso.
2. Selecione "TWS Edifier NeoBuds Planar" na lista de dispositivos para conectar.

3. Emparelhamento em um novo dispositivo



1. Coloque as fones de ouvido na caixa e mantenha o botão de toque pressionado por 5 segundos até que o LED vermelho no fundo da caixa esteja aceso.
2. Selecione "TWS Edifier NeoBuds Planar" na lista de dispositivos para conectar.
3. Selecione "TWS Edifier NeoBuds Planar" na lista de dispositivos para conectar.

4. Conexão multiponto



1. Conecte o dispositivo A com os fones de ouvido manualmente.
2. Mantenha o botão de toque pressionado por 5 segundos até que o LED vermelho no fundo da caixa esteja aceso.
3. Selecione "TWS Edifier NeoBuds Planar" na lista de dispositivos para conectar.

5. Conexão esquerda e direita



1. Coloque as fones de ouvido na caixa e mantenha o botão de toque pressionado por 5 segundos até que o LED vermelho no fundo da caixa esteja aceso.
2. Mantenha o botão de toque pressionado por 5 segundos até que o LED vermelho no fundo da caixa esteja aceso.

6. Carregamento



1. Conecte o cabo USB-C à porta USB-C da caixa de carregamento.
2. O carregamento será iniciado automaticamente quando o cabo USB-C estiver conectado.

7. Controles



1. "L" Pressione uma vez, "R" Pressione duas vezes, "L" Pressione três vezes, "R" Pressione quatro vezes.
2. Conecte as fones de ouvido à caixa de carregamento de modo a manter o botão de toque pressionado.
3. Para a download do App Edifier Connect para obter mais informações de controle personalizadas.

[EDIFIER NeoBuds Planar User Guide and Controls](#)

Comprehensive guide for EDIFIER NeoBuds Planar true wireless earbuds, covering setup, pairing, multipoint connection, reset procedures, charging, and touch controls. Download the EDIFIER ConneX app for advanced customization.



NeoBuds Pro

True Wireless Stereo Earbuds with Active Noise Cancellation

— Manual —



EN 1. Power ON/OFF



→ Tap the touch sensor to power on/off the earbuds.



→ Tap the touch sensor to power on/off the earbuds.

2. Pairing



1. Press the touch sensor.
2. The earbuds will enter pairing mode and the LED indicator will flash red and blue.
3. Press the touch sensor to confirm pairing.

Note: The earbuds will enter pairing mode only when the lid is open.

3. Reset Left & Right connection



1. Press the touch sensor.
2. The earbuds will enter pairing mode and the LED indicator will flash red and blue.
3. Press the touch sensor to confirm pairing.

Note: The earbuds will enter pairing mode only when the lid is open.

4. Controls

Left Earbud Right Earbud



Answer/End call
Play/Pause
Next track
Previous track

Note:
1. Press the touch sensor to answer/end call.
2. Press the touch sensor to play/pause.
3. Press the touch sensor to skip to the next track.
4. Press the touch sensor to skip to the previous track.

For more information, please visit our website:

www.edifier.com

Facebook Twitter Instagram

Edifier NeoBuds Pro

Edifier NeoBuds Pro

Edifier NeoBuds Pro

Edifier NeoBuds Pro

Edifier NeoBuds Pro

Edifier NeoBuds Pro

Edifier NeoBuds Pro

Edifier NeoBuds Pro

Edifier NeoBuds Pro

Edifier NeoBuds Pro

Edifier NeoBuds Pro

Edifier NeoBuds Pro

Edifier NeoBuds Pro

Edifier NeoBuds Pro

Edifier NeoBuds Pro

Edifier NeoBuds Pro

Edifier NeoBuds Pro

Edifier NeoBuds Pro

Edifier NeoBuds Pro

Edifier NeoBuds Pro

Edifier NeoBuds Pro

Edifier NeoBuds Pro

Edifier NeoBuds Pro

Edifier NeoBuds Pro

Edifier NeoBuds Pro

Edifier NeoBuds Pro

Edifier NeoBuds Pro

Edifier NeoBuds Pro

Edifier NeoBuds Pro

Edifier NeoBuds Pro

Edifier NeoBuds Pro

Edifier NeoBuds Pro

Edifier NeoBuds Pro

Edifier NeoBuds Pro

Edifier NeoBuds Pro

Edifier NeoBuds Pro

Edifier NeoBuds Pro

Edifier NeoBuds Pro

Edifier NeoBuds Pro

Edifier NeoBuds Pro

Edifier NeoBuds Pro

Edifier NeoBuds Pro

Edifier NeoBuds Pro

Edifier NeoBuds Pro

Edifier NeoBuds Pro

Edifier NeoBuds Pro

Edifier NeoBuds Pro

Edifier NeoBuds Pro

Edifier NeoBuds Pro

Edifier NeoBuds Pro

Edifier NeoBuds Pro

Edifier NeoBuds Pro

Edifier NeoBuds Pro

Edifier NeoBuds Pro

Edifier NeoBuds Pro

Edifier NeoBuds Pro

Edifier NeoBuds Pro

Edifier NeoBuds Pro