

[manuals.plus](#) /

› [Jocoevol](#) /

› [Jocoevol Corner Pantry Cabinet User Manual](#)

## Jocoevol kitchen pantry cabinet

# Jocoevol Corner Pantry Storage Cabinet User Manual

Model: kitchen pantry cabinet

## 1. INTRODUCTION

---

Thank you for choosing the Jocoevol Corner Pantry Storage Cabinet. This manual provides essential information for the safe assembly, operation, and maintenance of your new furniture. Please read it thoroughly before beginning assembly and retain it for future reference.



Image 1.1: The Jocoevol Corner Pantry Storage Cabinet with its upper doors open, showcasing the interior storage and door shelves.

## 2. SAFETY INSTRUCTIONS

---

To ensure safe use of your cabinet, please adhere to the following guidelines:

- **Anti-Tipping Hardware:** Always install the provided anti-tipping hardware to secure the cabinet to the wall. This is crucial to prevent accidental tipping, especially in households with children or pets.
- **Weight Distribution:** Distribute weight evenly across shelves. Place heavier items on lower shelves to maintain stability.
- **Placement:** Position the cabinet on a flat, level surface. Avoid placing it in areas with high humidity or direct sunlight, which can damage the material.
- **Assembly:** Ensure all parts are correctly assembled and fasteners are tightened securely before use. Periodically check and re-tighten fasteners as needed.
- **Children:** Do not allow children to climb on or play with the cabinet.

## 3. SETUP AND ASSEMBLY

---

This cabinet is designed for easy assembly. Please follow the included detailed instructions, which feature numbered parts and pre-drilled holes for quick and accurate setup. Two people are recommended for assembly.

### 3.1. Pre-Assembly Checklist

- Verify all parts and hardware are present against the packing list.
- Clear a spacious, clean area for assembly.
- Have necessary tools ready (e.g., screwdriver, hammer).

### 3.2. Assembly Steps (General Guidance)

1. Assemble the base frame according to the instructions.
2. Attach side panels and back panels, ensuring the 90-degree corner design aligns correctly.
3. Install interior shelves. Note that two shelves are adjustable to accommodate items of varying heights.
4. Attach the doors, ensuring they open and close smoothly.
5. Install the anti-tipping hardware to secure the cabinet to a wall stud.



Image 3.1: Product dimensions for planning placement and assembly.

## 4. OPERATING INSTRUCTIONS

---

Your Jocoevol Corner Pantry Storage Cabinet is designed for versatile storage in various rooms.

### 4.1. Storage Capacity

The cabinet features two spacious cabinets with four doors, including 8 door shelves and 4 interior shelves. Two of the interior shelves are adjustable, allowing you to customize the storage space for items of different heights.



Image 4.1: The cabinet's interior, highlighting adjustable shelves and door storage.

## 4.2. Features

- **Space-Saving Corner Design:** The 90-degree right-angle design allows the cabinet to fit securely into corners, maximizing unused space.
- **Door Shelves:** Optimized storage on the inside of the doors provides easy access to smaller items.
- **Magnetic Door Catches:** Ensures quiet and secure closing of the cabinet doors.
- **Adjustable Lighting Modes:** (If applicable, based on image '3 Adjustable Lighting Modes Motion Sensor to easily find items') Some models may include motion sensor lighting with adjustable modes to help locate items inside the cabinet.



1

## Space Saving for Corner Space

Unique Structure Design



2

## 2 Door Shelves

Optimized storage for easy access



3

## Farmhouse Steel Design

Image 4.2: Key features including space-saving design, door shelves, and magnetic door catches.



Image 4.3: Example of the cabinet in a kitchen, utilized for pantry storage.



Image 4.4: Example of the cabinet in a bathroom, utilized for linen and toiletry storage.

## 5. MAINTENANCE

---

Proper care will extend the life and appearance of your cabinet.

- **Cleaning:** Wipe surfaces with a soft, damp cloth. Avoid harsh chemicals or abrasive cleaners, which can damage the finish.
- **Spills:** Clean up spills immediately to prevent staining or moisture damage.
- **Hardware:** Periodically check all screws and fasteners to ensure they remain tight. Re-tighten as necessary.
- **Avoid Overloading:** Do not exceed the weight capacity of the shelves to prevent damage or collapse.

## 6. TROUBLESHOOTING

---

If you encounter issues with your cabinet, refer to the following common solutions:

- **Wobbly Cabinet:** Ensure the cabinet is on a level surface. Check all assembly screws and tighten them. Verify anti-tipping hardware is securely installed.
- **Doors Not Closing Properly:** Check door hinges for proper alignment. Adjust if necessary. Ensure no items are obstructing the door's path.
- **Missing Parts:** If you find any parts missing during assembly, please contact customer support immediately.
- **Damage During Shipping:** If the product arrived damaged, document the damage with photos and contact customer support.

## 7. SPECIFICATIONS

---

Feature	Detail
Brand	Jocoevol
Model Name	kitchen pantry cabinet
Color	White
Product Dimensions	29.9"D x 13.38"W x 68"H
Item Weight	36 Pounds
Material	Engineered Wood
Number of Doors	4
Number of Shelves	4 (2 adjustable) + 8 door shelves
Special Features	Adjustable Shelf, Heavy Duty, Scratch Resistant, Space-Saving Corner Design, Magnetic Door Catches
Mounting Type	Floor Mount (with anti-tipping hardware)
Assembly Required	Yes

## 8. WARRANTY AND SUPPORT

---

Jocoevol is dedicated to providing excellent service. While specific warranty details are not provided in this manual, for any questions, concerns, or support needs regarding your product, please contact our customer service team. We aim to respond to all inquiries within 24 hours.

For assistance, please refer to the contact information provided with your purchase or visit the official Jocoevol store on Amazon.

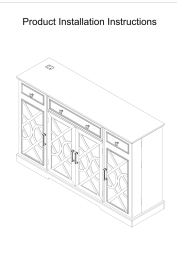

## 9. PRODUCT VIDEOS

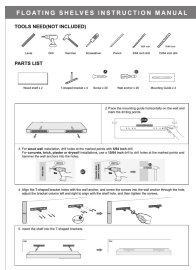
---

No official product videos were available for embedding based on the provided data.



Related Documents - kitchen pantry cabinet

	<p><a href="#">Display Cabinet Assembly Instructions and Warranty Information</a></p> <p>Comprehensive guide for assembling a FUFU&amp;GAGA display cabinet, including detailed steps, parts list, and warranty information. Learn how to safely assemble and maintain your furniture.</p>
	<p><a href="#">Orren Ellis fpir2682 Farmhouse Buffet Cabinet Installation Instructions</a></p> <p>Detailed installation guide for the Orren Ellis fpir2682 Farmhouse Buffet Cabinet, providing step-by-step instructions and an accessories list for assembly.</p>
	<p><a href="#">Assembly Instructions for Gizoon 33" Small Kitchen Pantry Storage Cabinet</a></p> <p>Detailed assembly instructions for the Gizoon 33" Small Kitchen Pantry Storage Cabinet with Door and Shelves, featuring 4 drawers. Includes warnings, warm tips, an exploded view, parts list, and step-by-step assembly guidance.</p>
	<p><a href="#">Assembly Instructions: Latitude Run Tall Corner Cabinet with Doors</a></p> <p>Detailed assembly guide for the Latitude Run Tall Corner Cabinet with Doors (model hifc4487). Includes component list, hardware details, and step-by-step instructions for furniture assembly.</p>
	<p><a href="#">HOMCOM 835-539 Tall Kitchen Cabinet Assembly Instructions</a></p> <p>Assembly instructions for the HOMCOM 835-539 Tall Kitchen Cabinet, a white and natural finish buffet with glass doors, 2 drawers, and 2 cabinets.</p>



[Floating Shelves Instruction Manual and Warranty Information](#)

This document provides instructions for installing floating shelves and details the two-year limited warranty provided by the manufacturer. It includes a parts list, step-by-step installation guides, and important safety warnings.