

Edifier M60

Edifier M60 Multimedia Speaker Instruction Manual

Model: M60 | Brand: Edifier

1. INTRODUCTION

The Edifier M60 Multimedia Speaker system is designed to deliver high-fidelity audio in a compact form factor. This manual provides essential information for setting up, operating, and maintaining your M60 speakers, ensuring optimal performance and longevity. The M60 features Bluetooth 5.3 with LDAC support, USB-C, and AUX inputs, making it suitable for various audio sources and desktop environments.



Image 1: Edifier M60 Multimedia Speakers, showcasing their compact design and classic oak finish.

2. PACKAGE CONTENTS

Please verify that all items are present in the package:

- Edifier M60 Active Speaker (1 unit)
- Edifier M60 Passive Speaker (1 unit)
- Aluminum Speaker Stands (1 pair)
- Speaker Connection Cable
- USB-C to USB-A Cable
- 3.5mm AUX Audio Cable
- Power Cable
- User Manual (this document)

3. PRODUCT OVERVIEW

The Edifier M60 speakers are engineered with precision components to deliver clear and powerful sound.

3.1 Speaker Components

- **1-inch Silk Dome Tweeters:** For crisp, clear high frequencies.
- **3-inch Long-Throw Aluminum Diaphragm Mid-Low Drivers:** For rich mid-range and impactful bass.
- **High-Efficiency Closed-Loop Class-D Audio Amplifier:** Provides 66W RMS total output power (18W+18W for mid-low, 15W+15W for treble).
- **Built-in DSP:** Ensures precise two-way active crossover and dynamic range control.

POWERFUL OUTPUT

66W RMS power delivers big, robust sound
in a compact size



Image 2: Cutaway view of the Edifier M60 speaker, highlighting the 1-inch silk dome tweeter and 3-inch mid-low driver.

3.2 Controls and Connections

- **Cap-Sensitive Touch Panel:** Located on the top of the active speaker for power, volume, and input selection. Features an automatic backlight.
- **Rear Panel Inputs:** USB-C, AUX, and Speaker-Out for connecting the passive speaker.

USER-FRIENDLY CONTROLS

Auto-backlit touch panel for easy touch
and swipe control



Image 3: Close-up of the active speaker's top panel, illustrating the cap-sensitive touch controls for power, volume, and input.

VERSATILE INPUTS AND BLUETOOTH V5.3

Seamless Connectivity with USB-C, AUX,
and Bluetooth V5.3



Image 4: Rear panel of the active speaker, detailing the USB-C, AUX, and speaker output connections.

4. SETUP

Follow these steps to set up your Edifier M60 speakers:

1. **Placement:** Position the active and passive speakers on a stable surface. For optimal listening, use the included aluminum speaker stands. These stands are designed at a 15-degree angle to direct audio towards ear level, reducing sound distortion.

SPEAKER STANDS INCLUDED

Aluminum stands reduce sound coloration and direct sound at a 15-degree angle for optimal listening.



Image 5: Edifier M60 speakers positioned on a desk, demonstrating the use of the included 15-degree angled aluminum stands for improved sound direction.

2. **Connect Speakers:** Use the provided speaker connection cable to link the active speaker to the passive speaker. Ensure a secure connection.
3. **Power Connection:** Connect the power cable to the active speaker and then plug it into a power outlet.
4. **Audio Source Connection:** Choose your preferred input method (Bluetooth, USB-C, or AUX) and connect your audio source accordingly.

COMPACT DESIGN

Measuring 100mm (W) x 168mm (H) x 147mm (D).
M60 fits seamlessly into any space



Image 6: A compact desktop setup featuring the Edifier M60 speakers alongside a laptop, illustrating their seamless integration into a workspace.

5. OPERATING INSTRUCTIONS

5.1 Power On/Off

Press the power button on the touch panel of the active speaker to turn the speakers on or off.

5.2 Volume Control

Adjust the volume by swiping or tapping the '+' and '-' icons on the touch panel. The backlight will activate automatically as your hand approaches the panel.

5.3 Input Selection

Cycle through the available input modes (Bluetooth, USB-C, AUX) by tapping the input selection icon on the touch panel. The active input will be indicated by a specific light or sound cue.

6. CONNECTIVITY

6.1 Bluetooth 5.3 (LDAC)

The M60 supports Bluetooth V5.3 with LDAC codec, allowing for high-resolution audio streaming up to 24-bit/96kHz from compatible Android devices (version 8.0 or later) with a maximum transmission bitrate of 990 kbps.

1. Select Bluetooth input on the speaker. The Bluetooth indicator will flash.
2. On your device, search for 'EDIFIER M60' in the Bluetooth settings and pair.
3. Once connected, the indicator will remain solid.

6.2 USB-C Input

Connect your computer or other USB-C audio source directly to the USB-C port on the active speaker using the provided USB-C cable. This connection supports digital audio input for high-quality sound.

6.3 AUX Input

For analog audio sources, use the 3.5mm AUX audio cable to connect your device to the AUX port on the active speaker.

7. EDIFIER CONNEX MOBILE APP

Enhance your experience by downloading the EDIFIER ConneX mobile app. The app provides extended functions and customization options for your M60 speakers.

- **Sound Effects:** Customize audio profiles for music, gaming, and more.
- **Backlight Settings:** Adjust the automatic backlight behavior of the touch panel.
- **Input Selection:** Conveniently switch between audio inputs from your mobile device.

EDIFIER CONNEX APP

Unlock enhanced features with EDIFIER ConneX app to customize sound effects, backlight settings, etc.



Image 7: Screenshots from the EDIFIER ConneX mobile application, illustrating various settings and customization options available for the M60 speakers.

8. MAINTENANCE

Proper care ensures the longevity and performance of your speakers:

- **Cleaning:** Use a soft, dry cloth to wipe the speaker surfaces. Avoid using abrasive cleaners, waxes, or solvents.
- **Environment:** Keep the speakers away from direct sunlight, heat sources, and excessive moisture. Ensure adequate ventilation around the speakers.
- **Handling:** Avoid placing heavy objects on the speakers or exposing them to strong impacts.

9. TROUBLESHOOTING

If you encounter issues with your Edifier M60 speakers, refer to the following common problems and

solutions:

Problem	Possible Cause	Solution
No power	Power cable not connected; Power outlet not active	Ensure power cable is securely connected to speaker and active outlet.
No sound	Incorrect input selected; Volume too low; Audio cable loose/damaged	Select correct input; Increase volume; Check audio cable connections.
Bluetooth pairing issues	Speakers not in pairing mode; Device already paired to another speaker	Ensure speakers are in Bluetooth pairing mode; Disconnect from other devices; Try re-pairing.
Distorted sound	Volume too high; Audio source issue; Speaker placement	Reduce volume; Test with different audio source; Adjust speaker placement.

10. SPECIFICATIONS

Detailed technical specifications for the Edifier M60 Multimedia Speaker:

- **Model Name:** M60
- **Speaker Type:** Bookshelf
- **Total Output Power:** 66W RMS (Mid-low: 18W+18W, Treble: 15W+15W)
- **Drivers:** 1-inch Silk Dome Tweeters, 3-inch Mid-low Drivers
- **Connectivity:** Bluetooth 5.3 (LDAC), USB-C, AUX
- **Audio Processing:** Full Digital Processing, Class-D Amplification, Built-in DSP
- **Hi-Res Audio Certification:** Yes (Wired & Wireless)
- **Control Method:** Touch Panel
- **Product Dimensions (per speaker):** 100mm (W) x 168mm (H) x 147mm (D) / 3.93"D x 6.61"W x 5.78"H
- **Item Weight:** 10.47 pounds
- **Color:** Classic Oak

MODERN SIMPLIFIED DESIGN

The speaker minimizes desktop space while its sleek design enhances home aesthetics with artistic elegance.



Image 8: Edifier M60 speakers with their dimensions (width and height) clearly marked for reference.

11. WARRANTY INFORMATION

The Edifier M60 Multimedia Speaker comes with a Limited Warranty. For specific terms and conditions, please refer to the warranty card included in your product packaging or visit the official Edifier website.

12. SUPPORT

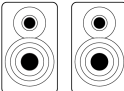
For further assistance, technical support, or inquiries regarding your Edifier M60 speakers, please visit the official Edifier support page or contact their customer service. You can often find detailed FAQs and troubleshooting guides on the manufacturer's website.

Official Edifier Website: www.edifier.com

Related Documents - M60



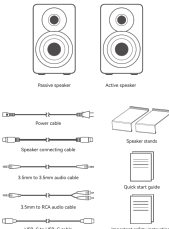
M60
Multimedia Speaker

EN
3. EDI/ER CasesX.m

- Switch input modes.
- Control play.
- Select or customize E.
- Upgrade the Envy.
- Access functions.

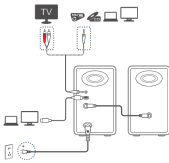
- You can also search for "EDIFIER Connect" in Apple App Store (iOS devices) or Google Play (Android devices).

1. Connect your smart device with the speaker via Bluetooth.
 2. In Bluetooth mode, open iQOO Connect App on your smart device.
 3. Tap the menu for settings and playback control.
- Note:** The iBLE connection between your smart device and the speaker remains active even if the speaker is switched to non-Bluetooth mode.

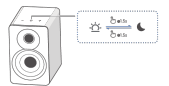


Notes:

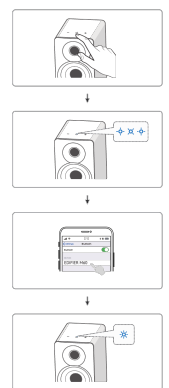
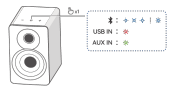
- Images are for illustrative purpose only and may differ from the actual product.
- The bundled USB connecting cable is for audio streaming only. Do not use it for device charging.
- For the need of technical improvement and system upgrade, information and specifications contained herein may be slightly different from actual product. If any difference is found, the actual product prevails.



* This also test is needed for illustration purposes only



Note:
To switch the speaker to standby mode or work mode, tap and hold the button on the speaker.



Note:
 ...the

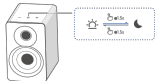
Edifier M60 Multimedia Speaker User Manual

Get detailed instructions on setting up and using your Edifier M60 multimedia speakers. Learn about Bluetooth and USB connectivity, app features, playback controls, troubleshooting, and specifications.

-
- A diagram illustrating a central power strip connected to various electronic devices. The power strip is shown with multiple outlets, each with a different plug type. Connected devices include a TV, a laptop, a desktop monitor, a tablet, a smartphone, and a small electronic device. The power strip is labeled 'Power Strip' and 'Central Power Strip'.

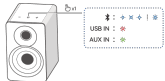
Note:
* Power input: 100-240V~50/60Hz, 60Watt.
* This plug type is meant for illustration purpose only.

4. Standby & wake up

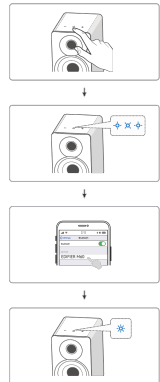


Note:
To switch the speaker to standby mode or wake mode, tap and hold the "Q" button on the speaker.

5. Source selection

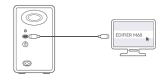


6. Bluetooth connection



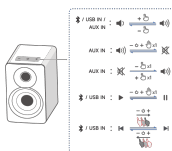
Note:
* For mode for accessories is "BT" if needed.
* To enjoy all Bluetooth functions of the product, make sure that your audio source device supports A2DP and AVRCP profiles.
* If no device is connected to it, the speaker will switch to Bluetooth mode. The "Q" button (light) will turn a flashing status in this mode. If no device connects to the speaker, tap the "Q" button to enter the pairing mode of the speaker, you can select "EDIFIER M60" from the Bluetooth device list to connect. To exit from Bluetooth mode, tap the "Q" button on the speaker.
* To disconnect from the current Bluetooth device, tap and hold the "Q" and "+" buttons on the speaker for 5 seconds.

7. USB connection



Note:
The following operating systems support USB audio streaming: Windows 11, Windows 10, Windows 8, and Windows 7.

8. Play control



Note:
In AUX and USB modes, volume sync is not supported. To adjust the volume, adjust on the speaker and your device separately.

9. Specifications

Total output power (RMS): LR (Class): 15W+15W
LR (Peak): 30W and Class: 30W+30W
Frequency response: 80Hz-20kHz
Distortion: 0.1%
Frequency Band: 2.402GHz-2.4835GHz
RF Power Output: 10 dBm (20dB)
There is no restriction of use.

10. Troubleshooting

Cannot connect to your Bluetooth device
* Make sure that the distance between this product and your Bluetooth device is less than 10 meters and there are no obstacles between them.
* Make sure that no device is connected to this product via Bluetooth.
* Make sure that the product is in Bluetooth pairing mode. First, manually switch it to this mode.
* Restart this product, enable Bluetooth function on your Bluetooth device, and then try again.

No power
* Make sure that the power cable is properly connected.
* Make sure that the power supply is not disconnected.

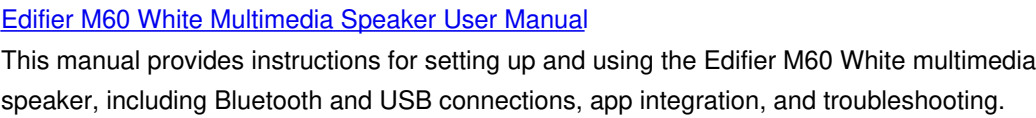
No sound
* Make sure that this product is powered on.
* Make sure that this product and your device are properly connected.
* Make sure that the playback is not paused.
* Make sure that this product and your device are not muted.
* Increase the volume of this product and your device.



Noise coming from speakers
* EDIFIER speakers generate hiss noise, while the background noise of some audio devices are too high. Please adjust audio levels and/or the volume up. If no sound can be heard at 1 meter away from the speaker, there is no problem with the product.

To learn more about EDIFIER, please visit www.edifier.com.
For EDIFIER warranty service, please visit the relevant country page on www.edifier.com and provide the relevant warranty terms.
USA and Canada: serviced@edifier.com
South America: Please visit our website and register at www.edifier.com (Spanish/Portuguese) for local contact information.

EDIFIER M60 Multimedia Speaker User Manual

Comprehensive user manual for the EDIFIER M60 multimedia speaker, covering setup, connections, features, troubleshooting, and specifications. Learn how to use the EDIFIER ConneX app for enhanced control.



	<p>Edifier M60 Classic Oak Multimedia Speaker User Manual</p> <p>Comprehensive user manual for the Edifier M60 Classic Oak multimedia speakers, covering app integration, connection methods (Bluetooth, USB, AUX), operation, specifications, and troubleshooting steps.</p>
	<p>Edifier R19BT Multimedia Speaker User Manual</p> <p>User manual for the Edifier R19BT multimedia speaker. Learn how to connect via USB, AUX, and Bluetooth, understand functional operations, and find troubleshooting tips for your Edifier R19BT speakers.</p>