

Manuals+

[Q & A](#) | [Deep Search](#) | [Upload](#)

manuals.plus /

› [STECHRO](#) /

› [Stechro WD76 Water Leak Detector User Manual](#)

STECHRO WD76

Stechro WD76 Water Leak Detector User Manual

Model: WD76 | Brand: STECHRO

1. INTRODUCTION

The Stechro WD76 Water Leak Detector is designed to provide early warning of water leaks and drips in your home. Its compact, battery-operated design allows for flexible placement in areas prone to water damage, such as basements, bathrooms, laundry rooms, and kitchens. With a loud 120 dB adjustable alarm and durable IP66 waterproof construction, it offers reliable protection and peace of mind against potential water-related issues.

2. PRODUCT FEATURES

- **Dual Detection:** Equipped with 2 probes on the front for monitoring pipes/drains for dripping and 4 probes on the back for detecting water leakage and floor dampness/flooding. Both sets of probes work simultaneously.
- **Easy Installation:** No wiring or complex installation required. Simply place the detector in desired locations.
- **Adjustable Alarm:** Features a loud 120 dB alarm to ensure you hear it even from a distance. Includes a mute mode for convenience once the leak is addressed.
- **Long Battery Life:** Energy-saving design allows 2 AAA batteries to last up to 2 years.
- **Durable & Waterproof:** IP66 waterproof rating ensures long-term use in high-moisture environments without internal rusting.
- **Test Button & Low Battery Alert:** Includes a test button for regular functionality checks and a flashing indicator light for visual alarms and low battery warnings.



Figure 2.1: Key Features of the Stechro WD76 Water Leak Detector.

3. PACKAGE CONTENTS

Upon unboxing your Stechro WD76 Water Leak Detector, please ensure all the following items are present:

- 1 x Stechro WD76 Water Leak Detector
- 2 x AAA Batteries (included)
- 1 x User Manual

4. SETUP

4.1 Battery Installation

The Stechro WD76 Water Leak Detector requires two AAA batteries for operation. These are included in the package. Follow these steps to install them:

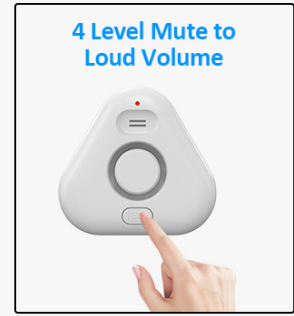
1. Use a small tool (like the blue pick provided) to gently press the socket inward on the side of the device and rotate clockwise to open the product.
2. Insert the two AAA batteries into the battery compartment, ensuring correct polarity (+/-).
3. Align the reference line and recap the plastic cover until it clicks securely into place.



1. Use a tool to press the socket inward and then rotate clockwise to open the product

2. Insert two AAA batteries

3. Align the reference line and recap the plastic cover



Press and hold the **【TEST】** button for 3 seconds to set volume

Figure 4.1: Battery Installation Steps.

Battery Power & Low Battery Alert

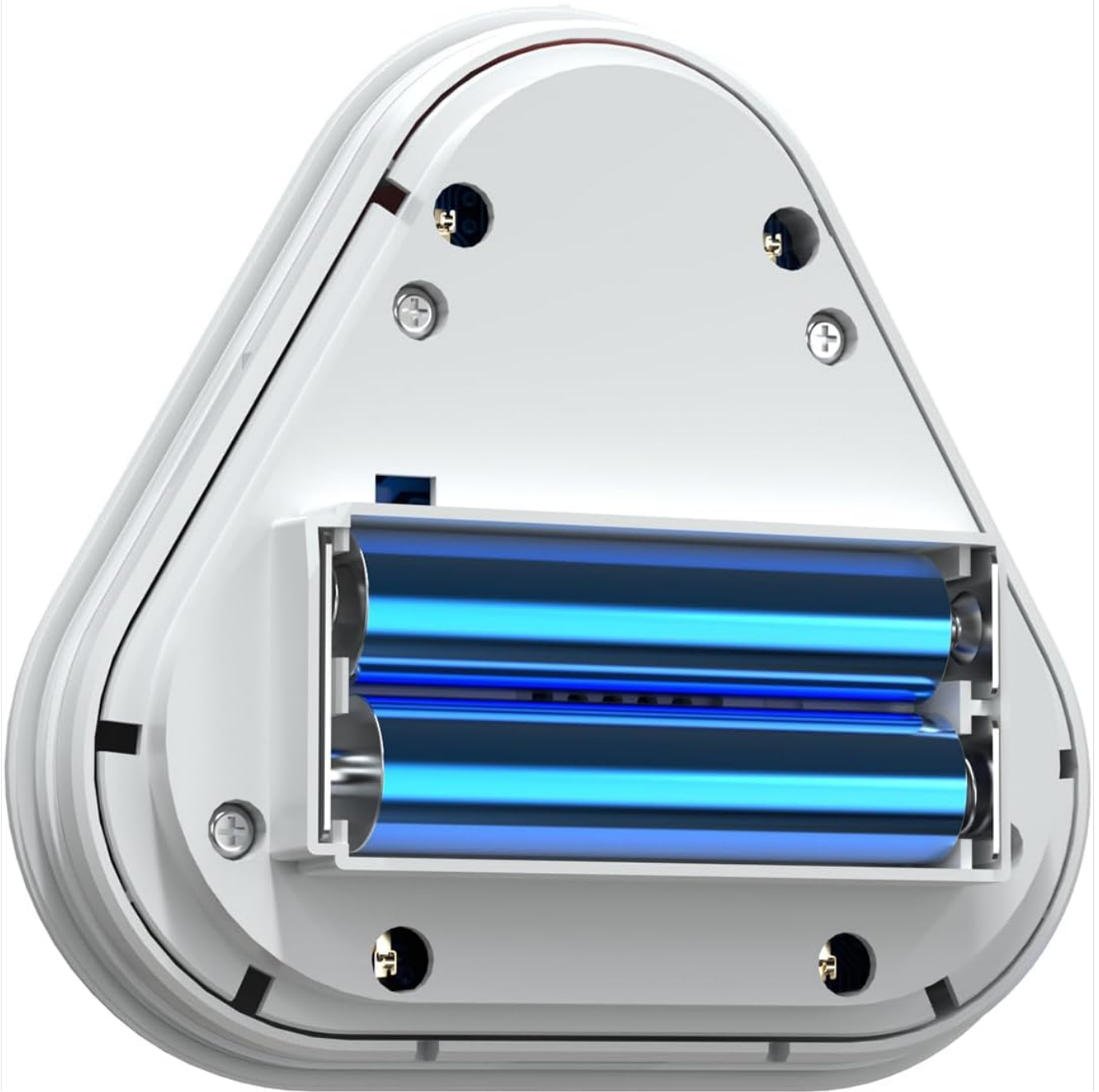


Figure 4.2: Open battery compartment with AAA batteries.

4.2 Power On/Off

To power on or off the device, press and hold the 'TEST' button for 10 seconds. The device will indicate its status with a sound or light.

5. OPERATING INSTRUCTIONS

5.1 Placement

Place the Stechro WD76 Water Leak Detector on a flat surface in any area where water leaks or drips may occur. Common locations include:

- Under sinks in kitchens and bathrooms
- Near washing machines or dishwashers
- In basements, especially near water heaters or sump pumps
- Near windows or doors where rain might enter
- Around toilets or bathtubs



Figure 5.1: Recommended Placement Areas.

Mini Size for Easy Placement



Figure 5.2: Compact size for discreet placement.

5.2 Alarm Modes and Operation

The detector is designed to alert you immediately upon contact with water. It features both loud and mute modes.

- When water is detected, the alarm will sound at 120 dB, and a flashing indicator light will activate.
- To mute the alarm once you have located the source of the leak, press the 'TEST' button. This will silence the alarm while the light continues to flash, indicating the presence of water.
- The device detects both dripping water (via front probes) and pooling water/leaks (via back probes).

Alarm Sound Loud



Figure 5.3: Loud alarm for immediate notification.



Figure 5.4: Dual detection for dripping and leaking.

5.3 Testing the Device

Regularly test your water leak detector to ensure it is functioning correctly. Press the 'TEST' button to check the alarm and indicator light. A flashing light and audible alarm confirm proper operation.

Video 5.1: Demonstration of Stechro Water Leak Detector in various home scenarios, including installation and alarm testing.

Video 5.2: Short overview highlighting the benefits and features of the Stechro Water Leak Sensor, including its alarm and waterproof capabilities.

6. MAINTENANCE

To ensure the longevity and optimal performance of your Stechro WD76 Water Leak Detector, it is important to keep it dry after an alarm event. Simply wipe off any detected water from the device and its probes using a clean, dry cloth. The IP66 waterproof design protects internal components, but keeping the exterior dry helps maintain sensor

accuracy and prevents residue buildup.

Replace batteries when the low battery alert is indicated by the flashing light.

7. TROUBLESHOOTING

7.1 Incompatibility with W13 Gateway

Please note that the Stechro WD76 Water Leak Sensor (Model: WD76) does NOT have WiFi, Bluetooth, or APP functions. It does NOT support connecting to the Stechro W13 WiFi gateway and cannot work with other products (ASIN: B0DPM4PYHJ/B0DPMCSB5B) in this store that require gateway connectivity. This device operates as a standalone alarm system.



Figure 7.1: WD76 is not compatible with W13 Gateway.

8. SPECIFICATIONS

Attribute	Detail
Model Number	WD76
Power Source	Battery Powered
Number of Batteries	2 AAA batteries (included)
Battery Cell Type	Alkaline
Voltage	3 Volts (DC)
Control Method	Touch
Mounting Type	Tabletop Mount
Sensor Technology	Contact Sensor

Item Weight	1.92 ounces
Product Dimensions	2.89 x 2.89 x 1.04 inches
Color	White
Country of Origin	China

9. WARRANTY AND SUPPORT

STECHRO is committed to customer satisfaction. We offer the following:

- **6-Month Replacement Service:** For any manufacturing defects or malfunctions within 6 months of purchase.
- **30-Day Money Back Guarantee:** If you are not completely satisfied with your purchase.
- **24-Hour Customer Service:** Our dedicated support team is available to assist you with any questions or issues.

If you have any questions or require support, please email us with your order number and a description of the issue. We aim for 100% customer satisfaction.