

GEWOKLIY MC60

GEWOKLIY Mac mini M4 Dock (MC60) User Manual

Model: MC60 | Brand: GEWOKLIY

1. INTRODUCTION

The GEWOKLIY Mac mini M4 Dock (MC60) is a versatile aluminum stand and hub designed to enhance the functionality and expand the storage of your Mac mini M4 and M4 Pro (2024 models). This 9-in-1 hub integrates an M.2 NVMe SSD enclosure, multiple USB-A ports, and SD/Micro SD card readers, transforming your Mac mini into a comprehensive workstation while maintaining optimal cooling.

What's In The Box

- 1 Packing box
- 2 USB-C to USB-C cable (connect to computer)
- 3 USB-C to USB-A cable (connect to power supply)
- 4 Mac Mini dock/hub
- 5 User manual
- 6 Screws
- 7 Screw drivers
- 8 Thermal pad for SSD

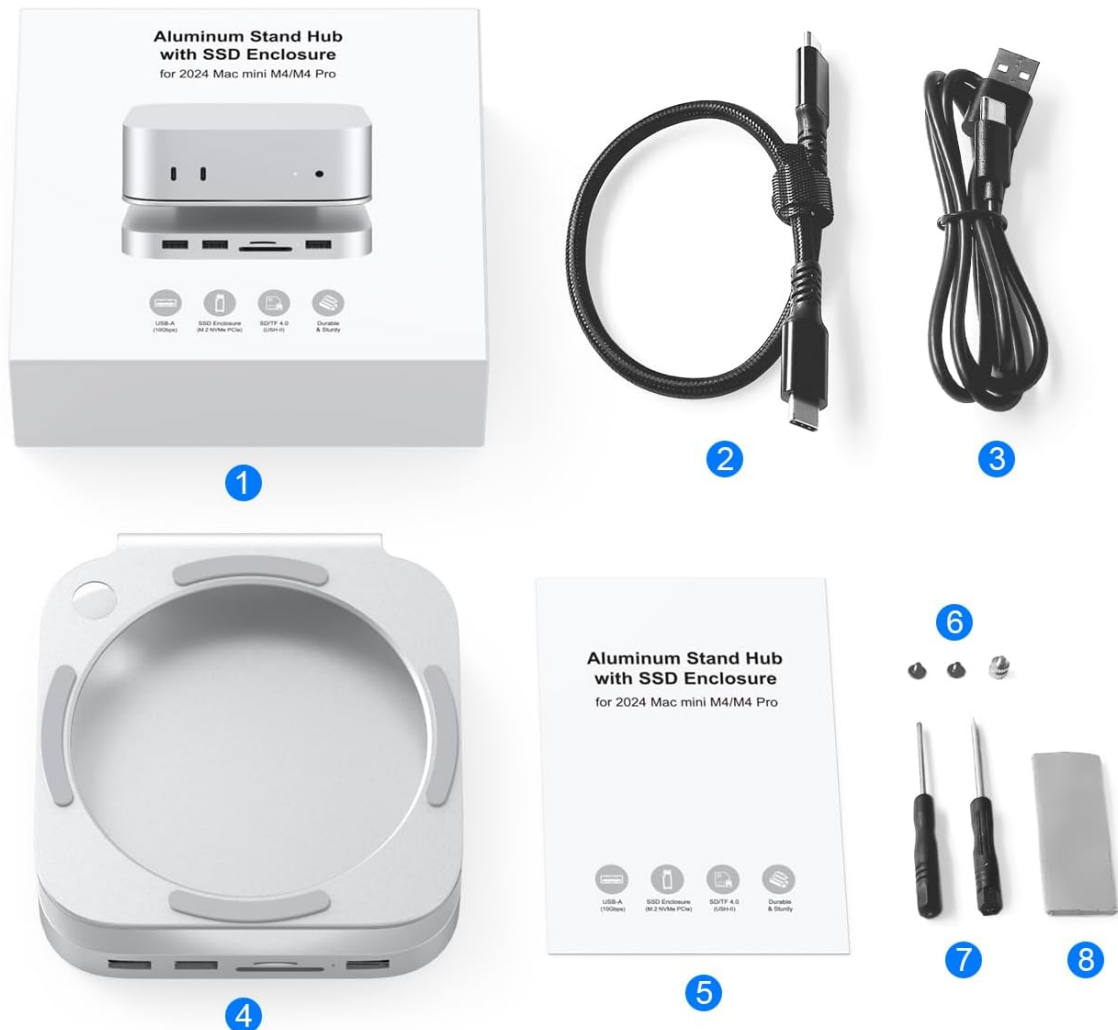


Image: The GEWOKLIY Mac mini M4 Dock (MC60) seamlessly integrated into a typical desk setup, providing expanded connectivity and storage.

2. PRODUCT OVERVIEW

The MC60 dock combines a stand and a hub, offering a range of expansion ports and an M.2 SSD enclosure. It is specifically designed for the Mac mini M4 and M4 Pro, ensuring a perfect fit and aesthetic integration.

Key Features:

- **M.2 NVMe SSD Enclosure:** Supports up to 8TB NVMe M.2 SSDs (2230/2242/2260/2280 sizes) for expanded storage.
- **High-Speed USB Ports:** Two USB-A 3.1 ports (10Gbps) for fast data transfer.
- **Additional USB Ports:** One USB 2.0 port for connecting standard peripherals.
- **Card Readers:** Integrated SD and Micro SD card readers for convenient media access.
- **Optimized Cooling:** Aluminum construction with heat-dissipating vents to maintain Mac mini performance.
- **Easy Power Button Access:** Patented design includes a cutout for easy access to the Mac mini's power button.

What's In The Box:

- GEWOKLIY Mac mini Dock/Hub (MC60)
- USB-C to USB-C Cable (for computer connection)
- USB-C to USB-A Cable (for power supply)
- User Manual
- Screws and Screwdriver (for SSD installation)
- Thermal Pad for SSD



Image: All components included in the GEWOKLIY Mac mini M4 Dock package, including the dock, cables, tools, and manual.

3. SETUP INSTRUCTIONS

Follow these steps to set up your GEWOKLIY Mac mini M4 Dock.

3.1. M.2 NVMe SSD Installation (Optional)

If you plan to use the M.2 SSD enclosure, install your NVMe SSD before connecting the dock to your Mac mini.

1. Carefully open the SSD enclosure compartment on the underside of the dock.
2. Insert your M.2 NVMe SSD into the slot. Ensure it is properly seated.
3. Secure the SSD with the provided screw.
4. Apply the thermal pad onto the SSD for optimal heat dissipation.
5. Close the enclosure compartment.

Note: This enclosure supports NVMe M.2 SSDs only. SATA M.2 SSDs are not compatible. Supported sizes include 2230, 2242, 2260, and 2280.

Storage Extended With M.2 SSD Enclosure

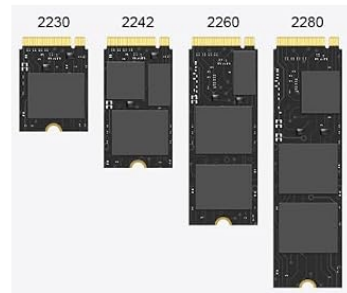
External storage expansion up to 8TB

ONLY fits: M.2 NVMe SSD

Compatible Type



Compatible Size



NVMe M.2



Please notice M.2 SATA SSD is not supported.

Image: Visual guide for installing an M.2 NVMe SSD into the dock's enclosure, detailing compatible types and sizes.

3.2. Connecting the Dock to Mac mini

1. Place your Mac mini M4 or M4 Pro securely on top of the GEWOKLIY dock. Ensure the Mac mini is aligned with the dock's design.
2. Connect the provided USB-C to USB-C cable from the dock's HOST port (USB-C) to an available USB-C/Thunderbolt port on your Mac mini.
3. For adequate power supply, especially when using hard drives or multiple power-intensive peripherals, connect the provided USB-C to USB-A cable from the dock's PD port (USB-C) to a power adapter (not included).

Design for Mac Mini M4 and Mac Mini M4 Pro

Designed as dock and mount together

Design with hole to easily put on/off the power button of mac mini



With packed-in two cable:
one to connect the Mac Mini
and the other one to get
extra power.



Image: The Mac mini M4 positioned on the dock, illustrating the design that allows easy access to the Mac mini's power button.

4. OPERATING INSTRUCTIONS

Once connected, the GEWOKLIY Mac mini M4 Dock operates plug-and-play, requiring no additional drivers.

4.1. Using USB Ports

- **USB-A 3.1 (10Gbps) Ports:** Use these ports for high-speed data transfer with devices such as external SSDs, flash drives, or other compatible peripherals.
- **USB 2.0 Port:** Connect standard peripherals like a mouse, keyboard, or printer.

4.2. Using Card Readers

The integrated SD and Micro SD card readers allow simultaneous reading and writing of data from both card types. Simply insert your memory card into the appropriate slot.



Triple USB A Ports

The Mac Mini Dock features DUAL USB 3.2 port (10 Gbps) and USB-A data ports (480Mbps). Connect USB peripherals such as USB flash disk, mouse, keyboard, card reader, camera, printer, hard drive and many other USB connected devices.

Dual Card Reader

Read SD/TF Cards Simultaneously, easily expands SD/TF slot and read and write 2 cards at the same time to keep you away from the hassle of constant unplugging and re-plugging.

Image: The front panel of the dock displaying its USB-A ports and SD/Micro SD card slots, with examples of connected devices and memory cards.

4.3. Accessing the M.2 SSD

Once installed and the dock is connected to your Mac mini, the M.2 NVMe SSD will appear as an external drive in macOS. You can use it for additional storage, backups, or running applications.

5. COOLING SYSTEM

The GEWOKLIY Mac mini M4 Dock is designed with an aluminum construction and strategically placed air vents to promote optimal airflow around your Mac mini. This helps in dissipating heat effectively, ensuring your Mac mini M4/M4 Pro runs smoothly even under heavy loads.

Upgrade Cooling System for Mac Mini M4/ M4 Pro

Special/Patent Design: Dock with Mount



Built to chill: The air is guided to different levels of the system, and all of it flows through the foot. Keep your Mac Mini running smoothly with MOUNT upon the dock, that air vents that promote effective temperature regulation and airflow.

Image: A visual representation of the cooling system, showing how air flows through the dock's vents to cool the Mac mini.

6. MAINTENANCE

To ensure the longevity and optimal performance of your GEWOKLIY Mac mini M4 Dock, follow these maintenance guidelines:

- **Cleaning:** Use a soft, dry cloth to wipe the exterior of the dock. Avoid using liquid cleaners or abrasive

materials.

- **Ventilation:** Ensure the air vents on the dock are not obstructed to allow for proper airflow and cooling.
- **Cable Management:** Keep cables organized and free from kinks or excessive bending to prevent damage.
- **Storage:** When not in use for extended periods, store the dock in a cool, dry place away from direct sunlight.

7. TROUBLESHOOTING

If you encounter issues with your GEWOKLIY Mac mini M4 Dock, refer to the following common solutions:

- **Dock Not Recognized:** Ensure the USB-C to USB-C cable is securely connected between the dock's HOST port and your Mac mini. Try connecting to a different USB-C/Thunderbolt port on your Mac mini.
- **SSD Not Appearing:** Verify that the M.2 NVMe SSD is correctly installed and secured within the enclosure. Ensure it is an NVMe SSD, as SATA SSDs are not supported. Check Disk Utility in macOS to see if the drive is detected but unformatted.
- **Peripherals Disconnecting/Unstable:** If you are using power-intensive devices (e.g., external hard drives) and experience disconnections, connect an external power adapter to the dock's PD port using the USB-C to USB-A cable for additional power.
- **Slow Data Transfer:** Ensure you are using the 10Gbps USB-A 3.1 ports for high-speed devices. Check that your connected devices and cables support 10Gbps speeds.
- **WiFi Signal Interference:** In rare cases, aluminum enclosures can affect wireless signals. If you experience significant Wi-Fi signal degradation, try repositioning your Mac mini or Wi-Fi router, or consider using a wired Ethernet connection if available.

8. SPECIFICATIONS

Feature	Specification
Brand	GEWOKLIY
Model Number	MC60
Color	Silver
Hardware Interface	USB 3.1 Type C
Compatible Devices	Mac Mini 2024, Mac Mini M4, Mac Mini M4 Pro
Total USB Ports	2 (USB-A 3.1 10Gbps) + 1 (USB 2.0)
Number of Ports	5 (2x USB-A 10Gbps, 1x USB 2.0, 1x SD, 1x Micro SD)
M.2 SSD Enclosure	NVMe M.2 (2230/2242/2260/2280), up to 8TB
Item Weight	0.46 Kilograms
Wattage	10W

9. WARRANTY AND SUPPORT

9.1. Warranty Information

The GEWOKLIY Mac mini M4 Dock (MC60) comes with a **one-year warranty** against manufacturer defects. Please

retain your proof of purchase for warranty claims.

9.2. Customer Support

For technical assistance, troubleshooting, or warranty inquiries, please contact GEWOKLIY customer support through the retailer's platform or visit the official GEWOKLIY store page on Amazon: [GEWOKLIY Store](#).

10. PRODUCT VIDEO

Watch the official product video for a visual guide on the GEWOKLIY Mac mini M4 Dock.

Your browser does not support the video tag.

Video: An official overview of the GEWOKLIY Mac mini M4 Dock, demonstrating its features and functionality.