

Manuals.plus /

- › Tangxi /
- › Tangxi 4K 48MP Digital Camera Instruction Manual

Tangxi Tangxiqpk4miyw6z-12

Tangxi 4K 48MP Digital Camera Instruction Manual

Model: Tangxiqpk4miyw6z-12

INTRODUCTION

This manual provides detailed instructions for the operation and maintenance of your Tangxi 4K 48MP Digital Camera. Please read this manual thoroughly before using the camera to ensure proper function and to maximize your photographic experience. Keep this manual for future reference.



Image 1: Front view of the Tangxi 4K 48MP Digital Camera. The camera is pink with a silver lens barrel, a flash, and a power button on top.

PRODUCT OVERVIEW

The Tangxi 4K 48MP Digital Camera is designed for ease of use, offering high-resolution imaging and video recording capabilities. Key features include a 2.4-inch screen, 16x digital zoom, built-in flash, and various shooting modes. Its compact and lightweight design makes it convenient for travel and everyday use.

Good quality
beyond your
imagination

**FASHION
CCD CAMERA**

4K

16x Powerful Zoom
1/3.2"=7.36mm

- HD photo taking**
camera function
- HD recording**
Video function
- 2.4 inch screen**
Display size
- 16x zoom**
Zoom function
- Built-in flash**
Flash function
- Anti-shake shooting**
Anti-shake function
- Motion video**
Motion Detection
- Take photos regularly**
Delay function

Image 2: An infographic illustrating the camera's main features, including HD photo taking, HD recording, 2.4-inch display, 16x zoom, built-in flash, anti-shake function, motion detection, and delay function.



Image 3: The compact design of the Tangxi Digital Camera, shown fitting easily into a pant pocket, highlighting its portability.

SETUP

1. Battery Installation and Charging

The camera comes with a built-in 700mAh Li-ion battery. Ensure the battery is fully charged before first use. Connect the camera to a power source using the provided data cable.

2. Memory Card Insertion

This camera supports Small Memory Cards (MicroSD) up to 128GB (not included). Locate the memory card slot, typically on the side or bottom of the camera. Insert the memory card with the gold contacts facing the correct direction until it clicks into place.

OPERATING INSTRUCTIONS

1. Power On/Off

Press and hold the power button (usually located on the top of the camera) to turn the camera on or off.

2. Basic Photo and Video Recording

Once powered on, the camera will typically be in photo mode. Press the shutter button to take a picture. To switch to video mode, locate the mode button or menu option and select video recording. Press the shutter button again to start and stop video recording.

3. 16x Digital Zoom

Use the zoom controls (often labeled 'W' for Wide and 'T' for Telephoto) to adjust the 16x digital zoom. This allows you to magnify distant subjects.

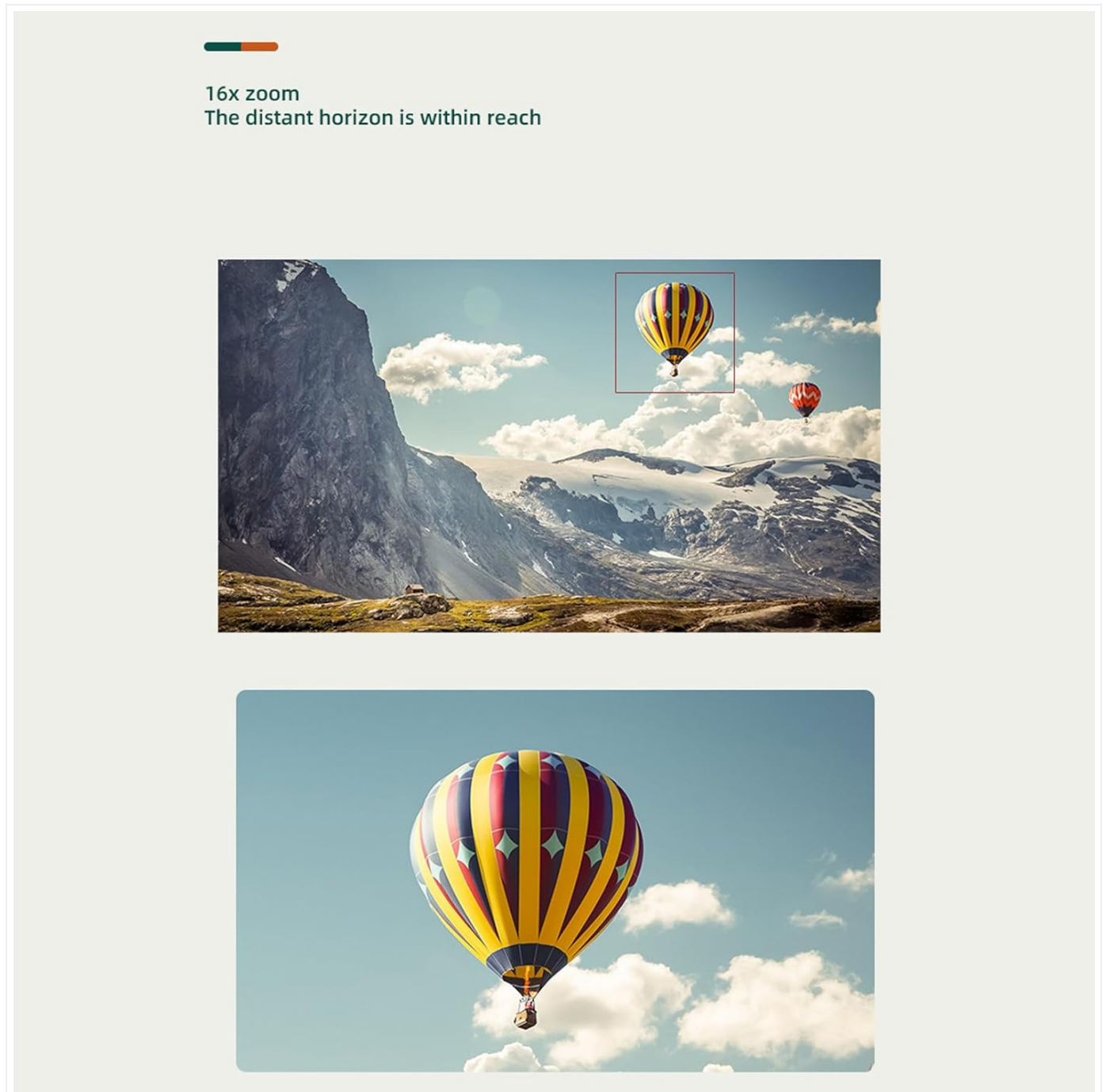


Image 4: An example demonstrating the 16x zoom capability, showing a distant hot air balloon brought closer into view.

4. Shooting Modes

The camera offers multiple shooting modes to optimize settings for different scenes. Access these modes through the

camera's menu. Available modes include:

- **Auto:** Standard mode for general photography.
- **Landscape:** Optimizes settings for wide outdoor scenes.
- **Portrait:** Enhances focus on human subjects.
- **Sports:** Suitable for capturing fast-moving subjects.
- **Aerial:** For photography from elevated positions.
- **Night Scene:** Improves low-light performance.
- **Highlight:** Adjusts for bright conditions.
- **Backlight:** Compensates for subjects with strong backlighting.

Multiple shooting modes

SLR |
MACHINE |

A variety of scenes
to shoot



Auto/Landscape/Portrait Sports/Aerial Photography
Night Scene/Highlight/Backlight



Image 5: Visual examples of various shooting modes, including cityscape, portrait, beach scene, concert, and a couple, demonstrating the camera's versatility.

5. Built-in Flash

The built-in flash activates automatically in low-light conditions or can be manually controlled via the camera settings to

provide additional illumination.

6. Anti-Shake Function

The anti-shake function helps to reduce blur caused by camera movement, resulting in clearer images, especially in challenging conditions.

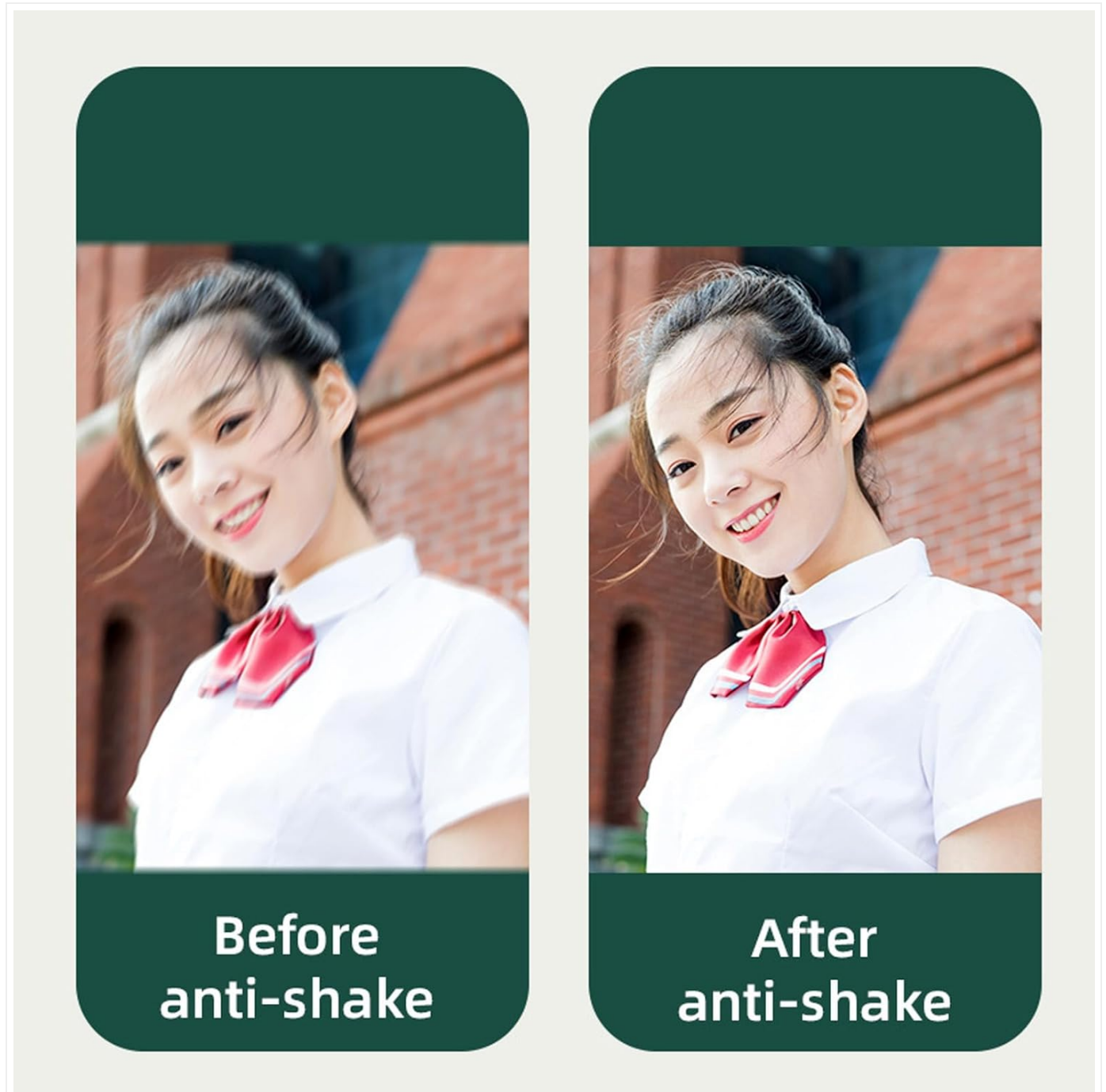


Image 6: A side-by-side comparison showing the effectiveness of the anti-shake feature, with a blurry image on the left and a sharp image on the right.

7. Face Detection

When enabled, face detection automatically identifies and focuses on human faces within the frame, ensuring portraits are sharp and well-exposed.

8. Continuous Shooting, Timer, Slow Motion, and Time Lapse

These advanced functions can be accessed through the camera's menu:

- **Continuous Shooting:** Captures a rapid sequence of photos.

- **Timer Shooting:** Sets a delay before taking a photo (e.g., 2-second or 10-second timer).
- **Slow Motion:** Records video at a higher frame rate for slow-motion playback.
- **Time Lapse:** Captures images at set intervals to create a time-lapse video.

Slow Motion/ Time Lapse Photography

More interesting and fun

SLR | MACHINE |

Auto/Night Scene/People/Landscape
Backlight Sports/Party/Beach/Highlight





Image 7: Illustrative images showcasing the effects of Slow Motion and Time Lapse photography, including a sunset scene and light trails.

MAINTENANCE

1. Cleaning

Use a soft, dry cloth to clean the camera body. For the lens, use a specialized lens cleaning cloth and solution. Avoid abrasive materials or harsh chemicals.

2. Storage

Store the camera in a cool, dry place away from direct sunlight and extreme temperatures. If storing for extended periods, remove the memory card and ensure the battery is partially charged.

TROUBLESHOOTING

- **Camera does not power on:** Ensure the battery is charged. Connect the camera to a power source to charge.
- **Cannot take photos/record videos:** Check if a memory card is inserted and has sufficient free space. Ensure the camera is in the correct mode (photo or video).
- **Images are blurry:** Activate the anti-shake function. Ensure sufficient lighting. Clean the lens if it is dirty.
- **Flash not working:** Check flash settings in the menu. Ensure it's not set to 'off' or 'red-eye reduction' if you expect it to fire.
- **Camera freezes:** Turn off the camera, remove the battery (if accessible, otherwise hold power button for a long time), wait a few seconds, then reinsert/restart.

SPECIFICATIONS

Feature	Specification
Video Resolution	4K (Maximum)
Image Pixels	48MP (Maximum)
Zoom	16x Digital Zoom
Storage	Small Memory Card, Maximum 128G (Not Included)
Battery Type	Li-ion Battery, 700mAh (Built-in)
Screen Size	2.4 inches
Anti-Shake	Supported
Face Detection	Supported
Built-in Flash	Yes
Item Weight	8.1 ounces
Model Number	Tangxiqpk4miyw6z-12

PACKAGE CONTENTS

The following items are included in your product package:

- 1 x Tangxi Digital Camera
- 1 x Instruction Manual (this document)
- 1 x Data Cable
- 1 x Lanyard

WARRANTY AND SUPPORT

Information regarding product warranty and customer support is typically provided with your purchase documentation or can be found on the official Tangxi website. Please refer to those resources for details on warranty coverage and how to contact support for assistance.

