

## Jocoevol WG-0616

# Jocoevol Modern Pink 6-Drawer Dresser Instruction Manual

Model: WG-0616

## INTRODUCTION

Thank you for purchasing the Jocoevol Modern Pink 6-Drawer Dresser. This manual provides detailed instructions for assembly, operation, maintenance, and troubleshooting to ensure you get the most out of your new furniture. Please read this manual thoroughly before beginning assembly or use.

This dresser is designed to provide ample storage space for clothes, linens, and accessories, making it a versatile addition to bedrooms, closets, living rooms, hallways, or entryways. Its robust wood construction ensures longevity and stability.

## SAFETY INFORMATION

Always follow these safety guidelines to prevent injury or damage to the product.

- Keep all small parts and packaging materials away from children and pets.
- Assemble the dresser on a soft, clean surface to prevent scratches.
- Ensure all screws and fasteners are securely tightened before use. Periodically check and re-tighten as needed.
- Always use the provided anti-tip kit to secure the dresser to a wall. This is crucial to prevent tip-over accidents, especially in households with children or pets.
- Do not overload drawers. Distribute weight evenly.
- Do not allow children to climb on or play with the dresser.

# Anti-collapse Design

Protect your kids and pets

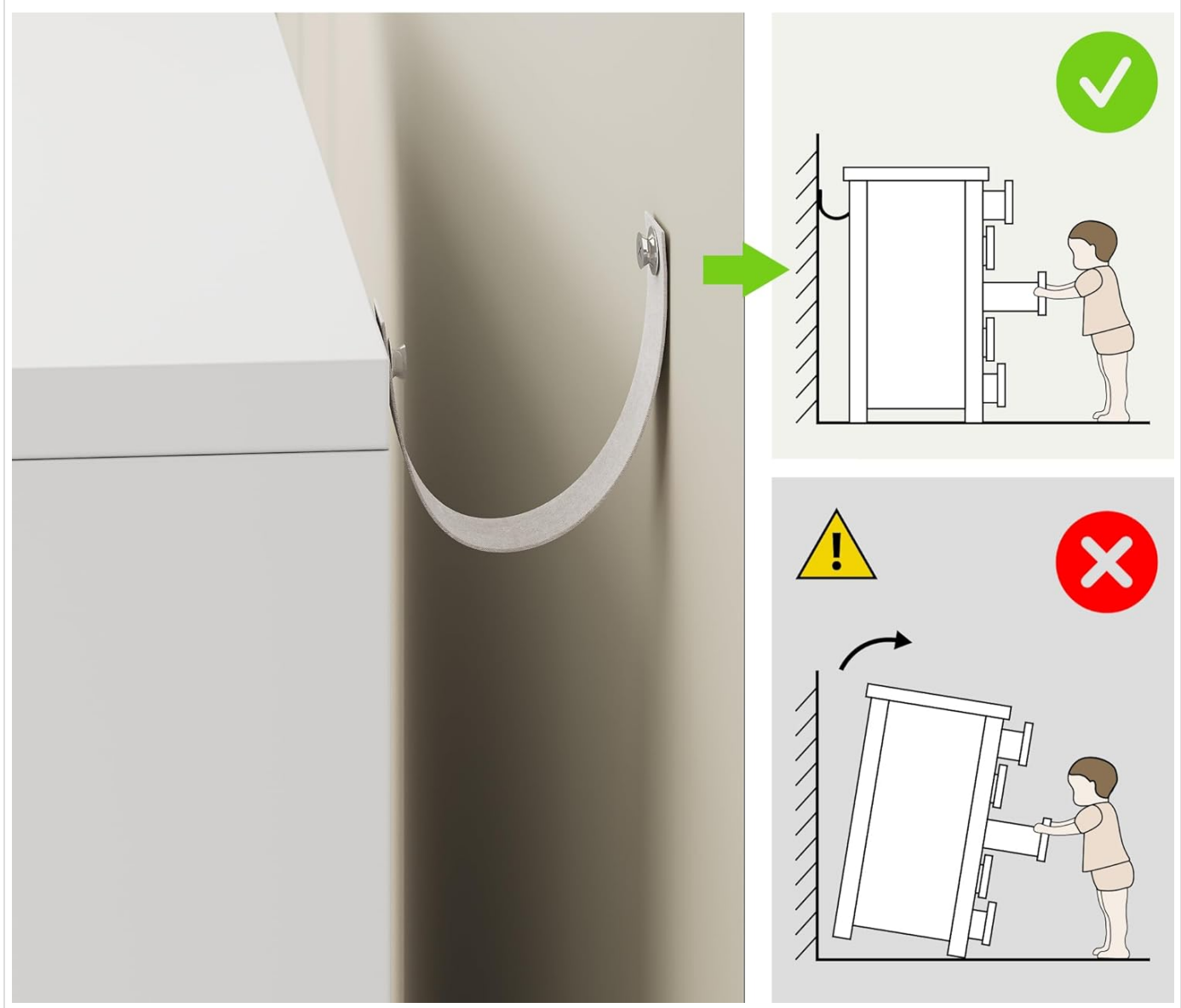


Image: Anti-collapse Design. This diagram illustrates the proper installation of the anti-tip kit to secure the dresser to a wall, preventing accidental tip-overs. It also shows a warning against not securing the dresser, which can lead to instability.

## PACKAGE CONTENTS

Before assembly, verify that all parts are present and undamaged. If any parts are missing or damaged, please contact customer support.

### Component List

Part	Description	Quantity
Dresser Panels	Top, bottom, side, back panels	Varies
Drawer Components	Drawer fronts, sides, backs, bottoms	6 sets
Drawer Slides	Metal rails for smooth drawer operation	12 (6 pairs)

Part	Description	Quantity
Hardware Kit	Screws, dowels, cam locks, anti-tip kit	1 set
Assembly Instructions	Detailed step-by-step guide	1

## Setup and Assembly

Assembly is required for this dresser. It is recommended that two people assemble the unit. Approximate assembly time is 2-4 hours.

### Tools Required:

- Phillips Head Screwdriver
- Hammer (optional, for dowels)

### Assembly Steps:

- 1. Unpack and Organize:** Carefully unpack all components and lay them out on a soft, clean surface. Group similar parts together and identify them using the component list.
- 2. Assemble the Main Frame:** Follow the included step-by-step assembly instructions to connect the top, bottom, and side panels of the dresser using the provided hardware (screws, dowels, cam locks). Ensure all connections are secure.
- 3. Install Drawer Slides:** Attach the metal drawer slides to the interior sides of the dresser frame and to the sides of each drawer box. Ensure they are level and aligned for smooth operation.
- 4. Assemble Drawers:** Construct each of the six drawers by connecting the front, back, and side panels, then inserting the drawer bottom. Secure all connections.
- 5. Insert Drawers:** Carefully slide each assembled drawer onto its respective slides within the dresser frame. Test each drawer for smooth opening and closing.
- 6. Attach Anti-Tip Kit:** Securely attach the anti-tip strap to the back of the dresser and to a wall stud using the provided hardware. This step is critical for safety.



*Image: Fully Assembled Dresser. This image shows the Jocoevol Modern Pink 6-Drawer Dresser fully assembled and placed in a bedroom, demonstrating its sleek design and ample storage capacity.*

## OPERATING INSTRUCTIONS

The Jocoevol 6-Drawer Dresser is designed for straightforward use.

### Drawer Operation:

- **Opening Drawers:** Gently pull the drawer front outwards to open. The smooth metal rails ensure easy gliding.
- **Closing Drawers:** Push the drawer front inwards until it is fully closed and flush with the dresser frame.
- **Storage Capacity:** Each of the six drawers provides ample space for various items. Utilize drawer organizers (not included) for classified storage of smaller items like socks, underwear, or accessories.

# Classified Storage

Easy access to socks, underwear or small items



*Image: Classified Storage. This image demonstrates the interior of an open dresser drawer, highlighting its capacity for organized storage of various items such as clothing and accessories.*

## Placement and Versatility:

This dresser's modern design and pink finish make it suitable for various room types:

- **Bedroom:** Ideal for storing clothing, linens, and personal items.
- **Closet:** Can be placed inside a walk-in closet for additional organized storage.
- **Living Room/Hallway/Entryway:** Provides functional storage for household items, keys, or decorative displays.

## MAINTENANCE AND CARE

Proper care will extend the life and maintain the appearance of your dresser.

- **Cleaning:** Wipe the dresser surfaces with a damp cloth. Avoid harsh chemicals or abrasive cleaners, as they may damage the finish.



- **Spills:** Immediately wipe up any spills to prevent staining or water damage.
- **Hardware Check:** Periodically check all screws, cam locks, and drawer slide connections to ensure they remain tight. Re-tighten as necessary to maintain stability and smooth drawer operation.
- **Sunlight Exposure:** Avoid prolonged exposure to direct sunlight, which can cause fading or discoloration of the finish.
- **Weight Distribution:** Distribute weight evenly across the dresser top and within the drawers to prevent warping or structural stress.



*Image: Quality Drawers Dresser Features. This image highlights key attributes of the dresser, including its environmental friendliness, waterproof surface, ease of cleaning, and stable construction.*

## TROUBLESHOOTING

If you encounter any issues with your dresser, refer to the following common problems and solutions.

Troubleshooting Guide

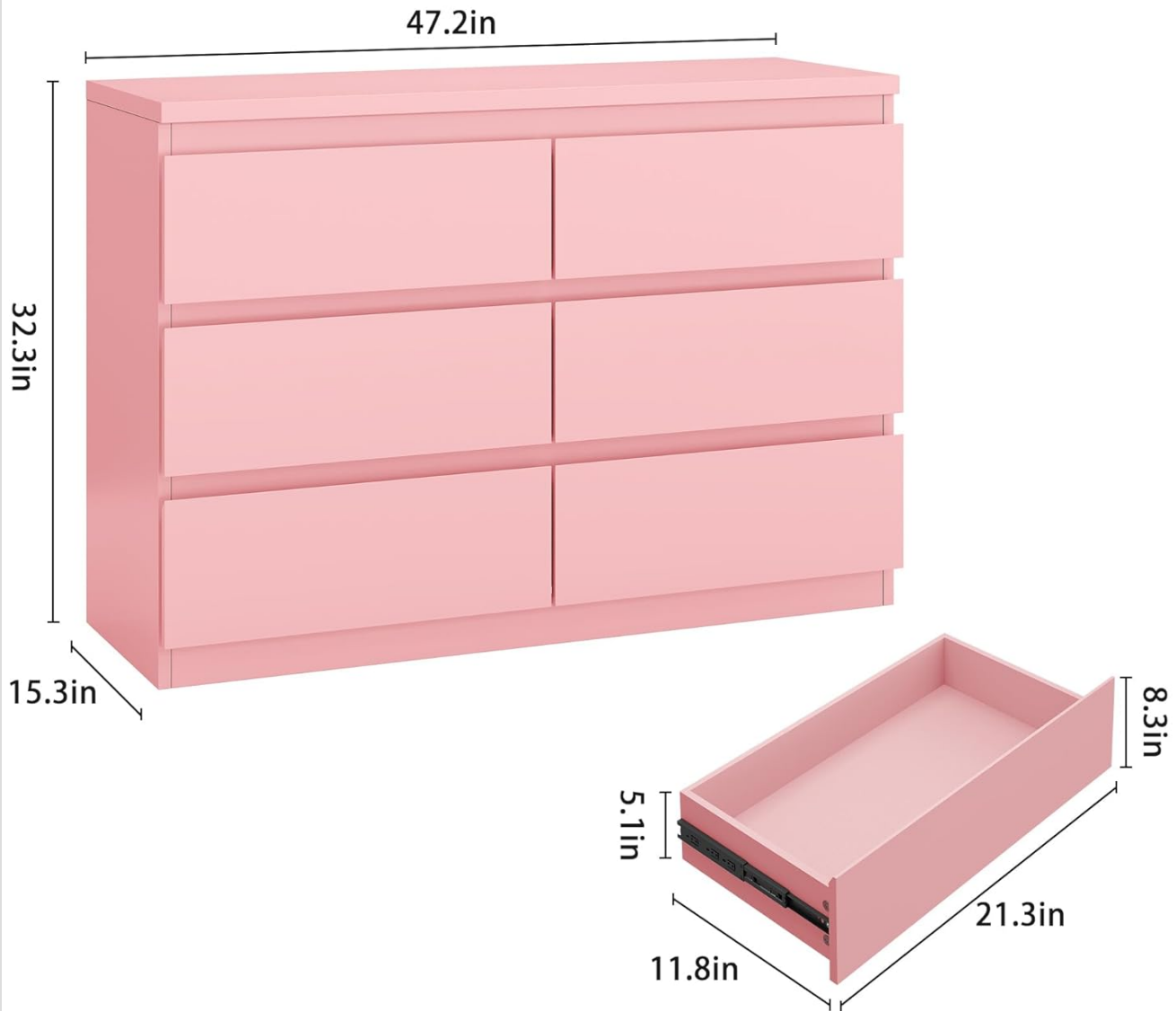
Problem	Possible Cause	Solution
Drawers do not close smoothly or get stuck.	<ul style="list-style-type: none"><li>Misaligned drawer slides.</li><li>Loose hardware on slides or drawer box.</li><li>Drawer overloaded or unevenly weighted.</li></ul>	<ul style="list-style-type: none"><li>Remove drawer and re-align slides.</li><li>Tighten all screws on drawer slides and drawer components.</li><li>Reduce weight or redistribute contents within the drawer.</li></ul>
Dresser feels wobbly or unstable.	<ul style="list-style-type: none"><li>Loose assembly hardware.</li><li>Not secured to the wall with anti-tip kit.</li><li>Uneven floor surface.</li></ul>	<ul style="list-style-type: none"><li>Re-tighten all assembly screws and cam locks.</li><li>Ensure anti-tip kit is properly installed and secured to a wall stud.</li><li>Place shims under the dresser legs to level it.</li></ul>
Scratches or minor damage to the finish.	<ul style="list-style-type: none"><li>Accidental impact or abrasion.</li></ul>	<ul style="list-style-type: none"><li>For minor scratches, a furniture repair pen or wax stick matching the color may be used.</li><li>Contact customer support for advice on more significant damage.</li></ul>

SPECIFICATIONS

Product Specifications

Attribute	Detail
Brand	Jocoevol
Model Name	WG-0616
Color	Pink
Product Dimensions (D x W x H)	15.3"D x 47.2"W x 32.3"H
Number of Drawers	6
Item Weight	92 Pounds
Material	Wood (Robust Wood Construction)
Drawer Type	Under Mounted Slide
Assembly Required	Yes
Care Instructions	Wipe with Damp Cloth

## Product Size



*Image: Product Dimensions. This diagram provides a detailed visual representation of the dresser's overall dimensions, including depth, width, and height, as well as individual drawer measurements.*

## WARRANTY AND SUPPORT

Jocoevol is committed to providing high-quality products and customer satisfaction.

### Returns:

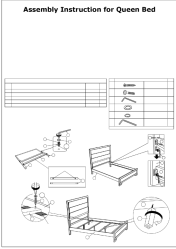




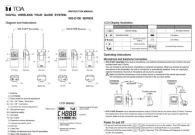
This product is eligible for 30-day easy returns. Please refer to your purchase platform's return policy for detailed instructions.

### Customer Support:

For any questions, missing parts, or assistance with assembly or troubleshooting, please contact Jocoevol customer support. You can typically find contact information on the retailer's website or through your order details. Please have your model number (WG-0616) and purchase date ready when contacting support.



Related Documents - WG-0616

	<p><a href="#">Assembly Instructions for Queen Bed, Dresser with Mirror, Chest, and Night Stand</a></p> <p>Comprehensive assembly instructions for a Queen Bed, Dresser with Mirror, Chest, and Night Stand, including parts lists, hardware lists, and step-by-step visual guides with textual descriptions.</p>
	<p><a href="#">HOSELINK 5641-WG Rotating 3-Arm Sprinkler User Manual</a></p> <p>User manual for the HOSELINK 5641-WG Rotating 3-Arm Sprinkler with Metal Base, detailing assembly, usage, and troubleshooting for garden watering.</p>
	<p><a href="#">OleumTech DH1 Base Unit / DH2 Wireless Gateway User Guide</a></p> <p>User guide for OleumTech DH1 Base Unit and DH2 Wireless Gateway. Covers installation, configuration, operation, and troubleshooting for industrial wireless sensor networks. Learn about Breez® software and advanced networking.</p>
	<p><a href="#">Ricoh WG Series Waterproof Camera Usage Guide</a></p> <p>This guide provides essential precautions for using Ricoh WG-6, WG-7, G900, and G900SE cameras in water, covering pre-use checks, post-use cleaning, and maintenance for optimal waterproof performance.</p>
	<p><a href="#">Ricoh WG Series Waterproof Camera Usage Guide</a></p> <p>Essential precautions and instructions for using Ricoh WG series waterproof cameras in and after water submersion. Covers proper handling of seals, cleaning, and maintenance for optimal waterproof performance.</p>
	<p><a href="#">TOA WG-D100 Series Digital Wireless Tour Guide System Instruction Manual</a></p> <p>Comprehensive instruction manual for the TOA WG-D100 Series Digital Wireless Tour Guide System, detailing operation, setup, diagrams, and troubleshooting for transmitters and receivers.</p>