

Warmco D4

Warmco 20000mAh 8-inch Portable Camping Desk Fan User Manual

Model: D4 | Brand: Warmco

INTRODUCTION

The Warmco 20000mAh 8-inch Portable Camping Desk Fan is a versatile and efficient cooling solution designed for both indoor and outdoor use. Featuring a high-capacity rechargeable battery, integrated LED lighting, and multiple speed settings, it provides powerful yet quiet airflow wherever you need it. Its ultra-thin and lightweight design makes it an ideal companion for camping, travel, office, or home use.



Figure 1: Warmco 8-inch Portable Camping Desk Fan.

WHAT'S IN THE BOX

- Warmco 20000mAh Portable Desk Fan (Model D4)
- USB Type-C Charging Cable
- User Manual
- Small screwdriver and extra screws (for maintenance)

SETUP

Initial Charging

Before first use, fully charge the fan. Connect the provided USB Type-C cable to the charging port on the side of the fan and plug the other end into a compatible USB power source (e.g., wall adapter, power bank, computer USB port). The digital display will show the battery percentage as it charges.

Powers Your Life

A fan that cools and charges.



Phone Charging



Digital Display



Type-C Charging

Figure 2: Charging the fan via USB-C and viewing the digital display.

Positioning the Fan

The fan features a foldable stand for desktop use and a hidden hanging hook for overhead placement.

- **Desktop Use:** Gently pull out the integrated stand from the back of the fan until it locks into your desired angle. The stand allows for various tilt adjustments.
- **Hanging Use:** Locate the hidden metal hook at the top of the fan. Pull it out and rotate it to hang the fan inside a tent, under an umbrella, or any suitable overhead support.

As thin as a book

Easy to place, saving your space

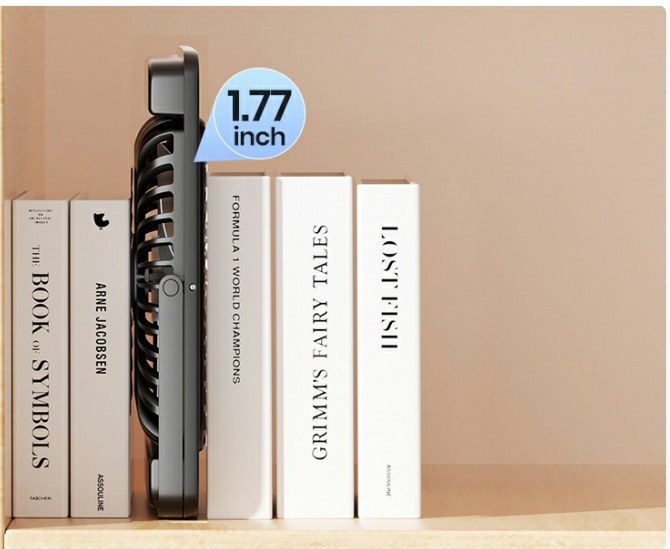


Figure 3: The fan's versatile stand and hidden hanging hook.

OPERATING INSTRUCTIONS

Powering On/Off and Fan Speed Adjustment

Locate the power button on the front panel of the fan.

- Press the power button once to turn the fan on at Speed 1.
- Press repeatedly to cycle through Speed 2, Speed 3, and Speed 4.
- Press a fifth time to turn the fan off.

The digital display will show the current fan speed (1-4) and the remaining battery percentage.

Quietly Powerful Airflow

High Wind Power Solutions Under 45 dB



Whispering
20–30dB

Our Fan
30–45dB

Quiet Countryside
45–55dB

Talking
55–65dB

Figure 4: The fan operates quietly, even at higher speeds.

LED Light Adjustment

Locate the light button (light bulb icon) on the front panel.

- Press the light button once to turn the LED light on at Brightness Level 1.
- Press repeatedly to cycle through Brightness Level 2 and Brightness Level 3.

- Press a fourth time to turn the LED light off.

Enjoy Your Summer Time

3 levels of lighting to suit different scenes



Hidden Metal Hook

0.07 inch Metal hook **10** KG Stability



Night Light

20 Lamp beads **350** Max Lumens



Figure 5: The integrated LED light provides illumination for various settings.

Power Bank Functionality

The fan's 20000mAh battery can also be used to charge external devices. Connect your device's USB charging cable to the USB output port on the side of the fan. The fan supports 5V/2.4A output.

Emergency Phone Charging

Outdoor emergency charging partner



Figure 6: Use the fan as a power bank to charge your devices.

MAINTENANCE

Cleaning the Fan Blades

To ensure optimal performance and airflow, regularly clean the fan blades. The front cover is detachable for easy access.

1. Locate the small screws on both sides of the fan cover.
2. Using the provided screwdriver, unscrew them counter-clockwise.
3. Carefully remove the front cover.
4. Wipe the fan blades with a soft, dry cloth. For stubborn dust, a slightly damp cloth can be used, ensuring the fan is completely dry before reassembly.
5. Align the cover and screw it back into place clockwise.

Removable Fan Panel

Easy to maintain and clean

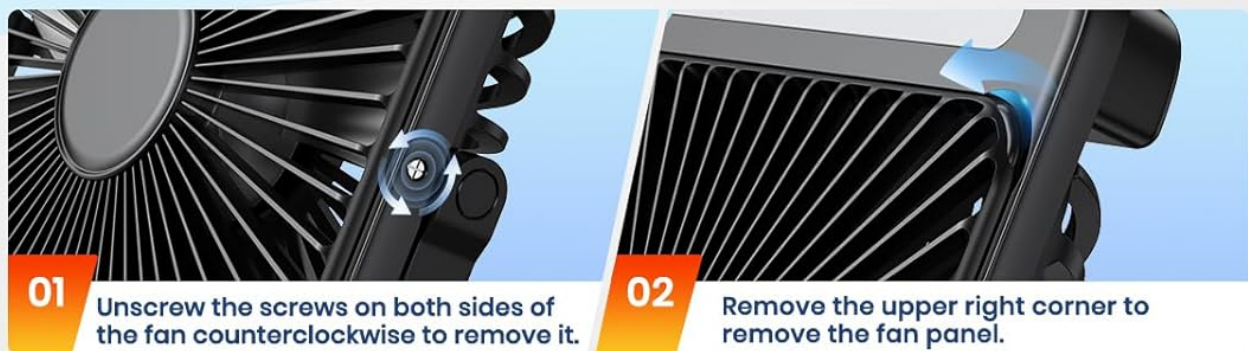


Figure 7: Detachable front panel for easy cleaning of fan blades.

TROUBLESHOOTING

- **Fan not turning on:** Ensure the battery is charged. Check the digital display for battery percentage. If low, connect

to a power source.

- **Weak airflow:** Check the fan speed setting and increase if necessary. Ensure the fan blades are clean and free from obstructions.
- **LED light not working:** Press the light button repeatedly to cycle through brightness levels and ensure it's not turned off.
- **Device not charging from fan:** Ensure the fan has sufficient battery charge. Verify the charging cable and the external device are properly connected.

SPECIFICATIONS

Brand	Warmco
Model Name	D4
Battery Capacity	20000mAh
Working Hours	15-48 hours (depending on speed/light usage)
Dimensions	1.77"D x 8.27"W x 10.71"H
Item Weight	1.7 Pounds
Noise Level	Below 45dB
Power Source	Battery Powered (USB Type-C charging)
Light Type	LED (3 brightness levels)
Output	5V/2.4A (for charging external devices)

WARRANTY & SUPPORT

Warmco offers a **3-Year Replacement Promise** for this product, ensuring peace of mind regarding its quality and durability.




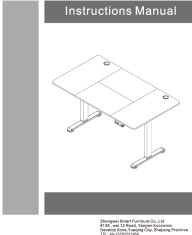

Figure 8: Warmco's 3-Year Replacement Promise.

For any product inquiries, technical support, or warranty claims, please contact Warmco customer service through the retailer's platform or visit the official Warmco website for contact information.

© 2025 Warmco. All rights reserved.

Related Documents - D4

	Warmco Ultra-thin Desk Fan - Specifications and User Guide Comprehensive guide for the Warmco Ultra-thin Desk Fan, covering specifications, features, usage instructions, maintenance, and safety precautions.
	Warmco D1 Ultra-thin USB Desk Fan User Manual User manual for the Warmco D1 ultra-thin USB desk fan, detailing its features, operation, safety precautions, and cleaning instructions.
	Warmco Ultra-thin Desk Fan - Specifications and User Guide Comprehensive guide for the Warmco Ultra-thin Desk Fan, covering specifications, features, usage instructions, maintenance, and safety precautions.

 <p>Warmco Ultra-thin USB Desk Fan Model: D1</p> <p>Use & Manual</p>	<p>Warmco D1 Ultra-thin USB Desk Fan User Manual</p> <p>User manual for the Warmco D1 ultra-thin USB desk fan, detailing its features, operation, safety precautions, and cleaning instructions.</p>
 <p>Instructions Manual</p> <p>Professional Smart Furniture Co., Ltd. 210018, No. 100, Xingye Road, Xingye Town, Taizhou City, Zhejiang Province, China Tel: 0576-82828282</p>	<p>Instructions Manual for Zhongwei Smart Height Adjustable Desk</p> <p>This manual provides detailed instructions for the assembly, operation, and troubleshooting of the Zhongwei Smart Height Adjustable Desk. It includes safety precautions, a parts list, step-by-step assembly guides, operational procedures for height adjustment and memory functions, and a comprehensive error code list.</p>
 <p>iMin D4 Model: I20D01 User Manual</p>	<p>iMin D4 POS Terminal User Manual</p> <p>User manual for the iMin D4 POS terminal (Model I20D01), detailing device options, components, ports, installation, printer operations, technical specifications, safety guidelines, and warranty information.</p>