

TRYX PANORAMA SE 360 ARGB

TRYX Panorama SE 360 ARGB AIO Cooler User Manual

Model: PANORAMA SE 360 ARGB | Brand: TRYX

1. PRODUCT OVERVIEW

The TRYX Panorama SE 360 ARGB is a high-performance All-in-One (AIO) liquid CPU cooler designed for efficient thermal management in computer systems. It features a unique rotatable 6.5-inch AMOLED curved screen, offering customizable visual effects and system monitoring. This cooler is engineered to provide stable and quiet operation while supporting a wide range of Intel and AMD CPU sockets.



Figure 1: TRYX Panorama SE 360 ARGB AIO Cooler with its radiator, fans, and pump block featuring the curved AMOLED screen.

2. KEY FEATURES

- **Rotatable 6.5" Curved AMOLED Screen:** Features a 6.5-inch AMOLED curved screen with a 60Hz refresh rate and 2K display (372PPI pixel density, 1,000,000:1 contrast ratio) for stunning visual experience. The screen is rotatable, allowing for multi-adjustable positions and supporting new "Waterfall" 3D animations.
- **3D Anamorphic Effect:** The curved AMOLED screen enhances content depth, achieving stunning naked-eye 3D visual effects with custom-formatted 3D videos. Includes preloaded content and a continuously updated 3D content library in KANALI software.
- **Reliable Screen Technology:** Designed with "G2 Curvature" for enhanced viewing angles and immersion. A tempered glass cover provides resistance against scratches and drops. Full adhesion technology ensures high light transmittance and reduced reflection.
- **Asetek Cooling Solution:** Utilizes ASETEK's Adela cooling solution, capable of handling CPU-intensive tasks with an overall 280W TDP cooling capacity. Combines a high-density fins radiator with efficient cooling fans for stable

performance.

- **Ultimate Customization with KANALI Software:** The TRYX KANALI software allows customization of the display with instant content switching, split-screen display, and system information. Supports user-uploaded PNG/JPG/GIF/MP4/AVI (1080P, 500MB maximum) media.
- **High Compatibility:** Includes all-metal mounting hardware for reliable installation on Intel LGA 1851/1700/1200/1151/1150/1155 and AMD AM4/AM5 sockets.
- **Stability and Quiet Operation:** Equipped with three 120mm pre-installed ROTA ARGB fans featuring fluid dynamic bearings and ARGB GEN2 LEDs. Fans include damping pads to minimize vibration noise, operating quietly under 27.86dB(A) even under full load.

FEATURES

Anamorphic Visual Effects



Pump Solution

ASETEK Adela Pump

Support

6-year Coverage

6.5-Inch Curved AMOLED Screen



Rotatable Display Module

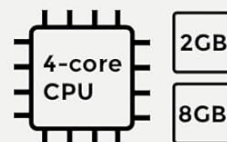


2K
2.2 Million Pixels

KANALI Software Hub



α-01 Thermal Paste



Near 0 System Usage

ARGB Fans



Figure 2: Overview of key features including Anamorphic Visual Effects, Asetek Adela Pump, 6.5-Inch Curved AMOLED Screen, Rotatable Display Module, 2K resolution, KANALI Software Hub, Thermal Paste, Near Zero System Usage, and ARGB Fans.

ROTATABLE DISPLAY MODULE



Detachable Screen

Flexible and Versatile

Dynamic Display Settings

All New “Waterfall Mode”

Figure 3: Illustration of the rotatable display module, highlighting its detachable screen, flexible and versatile design, dynamic display settings, and the new “Waterfall Mode” capability.

3. WHAT'S IN THE BOX

Upon opening the package, verify that all the following components are present:

- AIO Cooler (Radiator with integrated pump and screen)
- AMD/Intel Mounting Brackets
- Thermal Paste
- User Manual (This document)
- Accessories for Installation (Screws, standoffs, etc.)
- Extended Cable

EXTENSIVE CHIPSET COMPATIBILITY

All-Metal Mounting Hardware for High Stability and Durability



Figure 4: Contents of the TRYX Panorama SE 360 ARGB AIO Cooler box, including the AIO unit, mounting hardware for Intel and AMD, thermal paste, and cables.

4. SETUP AND INSTALLATION

This section provides a general overview of the installation process. For detailed, step-by-step instructions, please refer to the dedicated Installation Manual PDF provided with your product or available on the TRYX website.

4.1 Pre-Installation Checklist

- Ensure your motherboard is compatible with Intel LGA 1851/1700/1200/1151/1150/1155 or AMD AM4/AM5 sockets.
- Verify your PC case has adequate space for a 360mm radiator and three 120mm fans.
- Gather necessary tools: Phillips head screwdriver, cleaning cloth, isopropyl alcohol (for CPU surface).

4.2 Installation Steps (General)

1. **Prepare CPU:** Clean the CPU surface thoroughly with isopropyl alcohol to remove any old thermal paste.

2. **Install Backplate:** Attach the appropriate backplate for your CPU socket (Intel or AMD) to the rear of the motherboard.
3. **Mount Standoffs:** Screw the correct standoffs into the backplate from the front side of the motherboard.
4. **Apply Thermal Paste:** Apply a small, pea-sized amount of the provided thermal paste to the center of your CPU's integrated heat spreader (IHS).
5. **Mount Pump Block:** Carefully align the pump block with the standoffs and gently lower it onto the CPU. Secure it with the provided thumb screws, tightening them in a diagonal pattern until snug.
6. **Install Radiator and Fans:** Mount the 360mm radiator and pre-installed fans to an available fan mounting location in your PC case (e.g., top, front). Ensure proper airflow direction.
7. **Connect Cables:**
 - Connect the pump power cable to the CPU_FAN or AIO_PUMP header on your motherboard.
 - Connect the fan power cables to available fan headers on your motherboard or a fan controller.
 - Connect the ARGB cables from the fans and pump block to your motherboard's ARGB header or a compatible ARGB controller.
 - Connect the USB cable from the pump block to an available internal USB 2.0 header on your motherboard for screen control via KANALI software.
8. **Cable Management:** Route all cables neatly to ensure proper airflow and a clean build.

KANALI SOFTWARE

- ✓ Support up to 1080P, 500MB content
- ✓ PNG / JPG / GIF / MP4 / AVI Compatible
- ✓ Brightness Balance
- ✓ New Water-fall Mode
- ✓ Full / Splitting Screen Mode

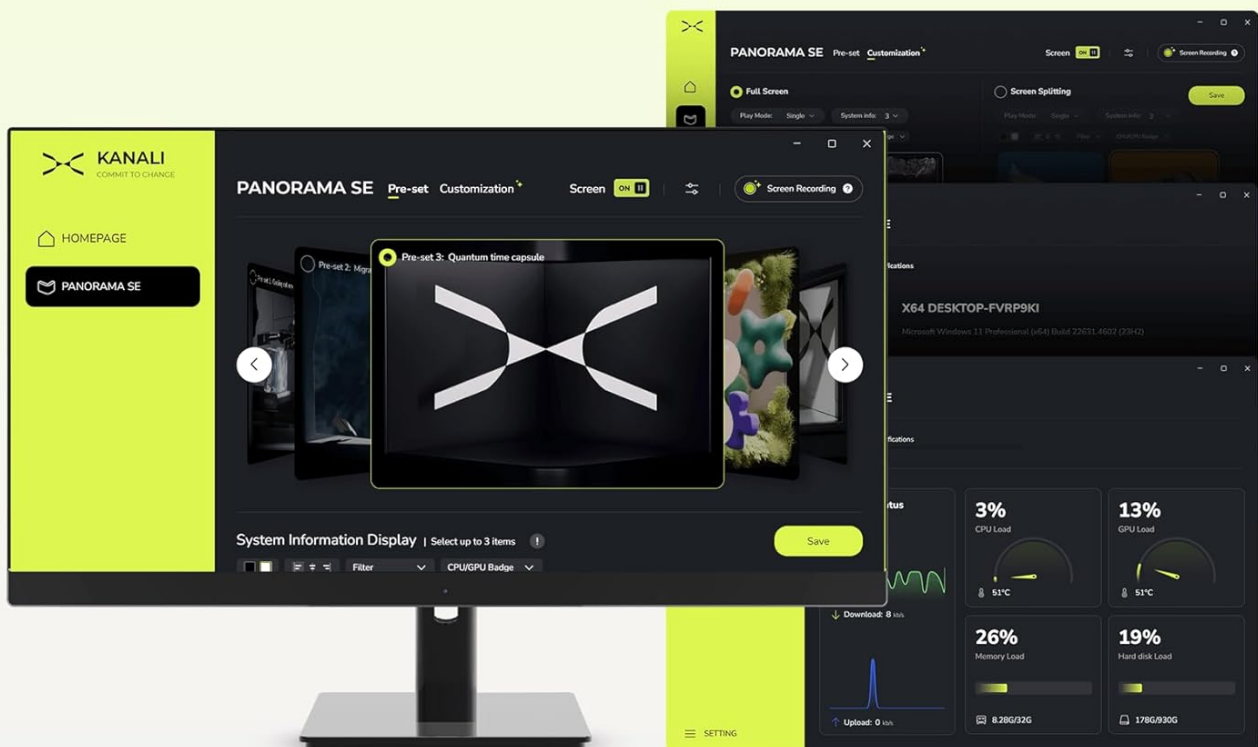


Figure 5: Diagram illustrating the mounting hardware for Intel (LGA 1851/1700/1200/1151/1150/1155) and AMD (AM4/AM5) chipsets, showing the different brackets and standoffs.

5. OPERATING INSTRUCTIONS

5.1 Initial Power On

After successful installation, power on your computer. The AIO cooler's fans and ARGB lighting should illuminate, and the AMOLED screen on the pump block will display default content.

5.2 KANALI Software Usage

To unlock the full customization potential of your TRYX Panorama SE 360 ARGB, download and install the KANALI software from the official TRYX website. This software allows you to:

- **Customize Screen Content:** Select from preloaded 3D animations, including the "Waterfall" mode, or upload your own images (PNG/JPG), GIFs, and videos (MP4/AVI up to 1080P, 500MB).
- **Display System Information:** Monitor real-time CPU temperature, frequency, and other system metrics directly on

the AMOLED screen.

- **Adjust Brightness:** Fine-tune the screen brightness for optimal viewing.
- **Split-Screen Display:** Utilize the split-screen capability to show different content simultaneously.
- **Control ARGB Lighting:** Synchronize or customize the ARGB lighting effects of the ROTA fans.



Figure 6: Screenshot of the KANALI software interface, showing options for screen content customization, including support for various media formats and new features like "Waterfall Mode" and full/splitting screen display.



Figure 7: The AIO cooler's screen displaying the "Waterfall Mode" animation, optimized for vertical screen orientation and showing system statistics.

6. MAINTENANCE

Regular maintenance ensures optimal performance and longevity of your AIO cooler.

- **Dust Cleaning:** Periodically clean the radiator fins and fan blades to prevent dust buildup, which can impede airflow and cooling efficiency. Use compressed air or a soft brush.
- **Fan Inspection:** Check fan blades for any obstructions or damage. Ensure fans are spinning freely and quietly.
- **Tubing and Connections:** Inspect the tubing for any kinks, leaks, or signs of wear. Ensure all connections to the pump and radiator are secure.
- **Thermal Paste:** While not required frequently, if you ever remove the pump block from the CPU, you must clean off the old thermal paste and apply new thermal paste before re-mounting.

7. TROUBLESHOOTING

This section addresses common issues. For more comprehensive troubleshooting, refer to the Troubleshooting Guide PDF.

7.1 No Power/No Display on Screen

- **Check Connections:** Ensure all power cables (pump, fans) and the USB cable for the screen are securely connected to the motherboard.
- **Motherboard Headers:** Verify that the pump is connected to the correct motherboard header (CPU_FAN or AIO_PUMP) and that the header is enabled in BIOS/UEFI.
- **Software:** Ensure KANALI software is installed and running.

7.2 High CPU Temperatures

- **Thermal Paste:** Confirm that thermal paste was applied correctly and evenly. Reapply if necessary.
- **Pump Contact:** Ensure the pump block has full and even contact with the CPU IHS. Tighten mounting screws diagonally.
- **Fan Speed:** Check fan speeds in KANALI software or motherboard BIOS/UEFI. Ensure they are set to an appropriate profile for cooling.
- **Radiator Airflow:** Clear any dust or obstructions from the radiator fins. Ensure case airflow is adequate.

7.3 Unusual Noise

- **Fan Noise:** Check if fan blades are hitting cables or other components. Ensure fans are securely mounted.
- **Pump Noise:** A slight hum from the pump is normal. Excessive gurgling might indicate air bubbles in the loop; try gently tilting your PC case to help dislodge them.

8. SPECIFICATIONS

Attribute	Value
Product Dimensions	16.93"L x 8.74"W x 5.71"H
Item Model Number	PANORAMA SE 360 ARGB
Manufacturer	Shanghai TRYX Technology Co.Ltd
Brand	TRYX
Power Connector Type	7-Pin
Voltage	12 Volts (DC)
Wattage	3.9 watts
Cooling Method	Water
Compatible Devices	CPU
Noise Level	27.86 dB

Attribute	Value
Material	Aluminum, Copper, Polybutylene Terephthalate
Maximum Rotational Speed	3600 RPM

9. WARRANTY AND SUPPORT

The TRYX Panorama SE 360 ARGB AIO Cooler is backed by a manufacturer's warranty, which includes a 6-year coverage period for the Asetek pump solution. For specific warranty terms and conditions, please refer to the official warranty documentation included with your product or visit the official TRYX website.

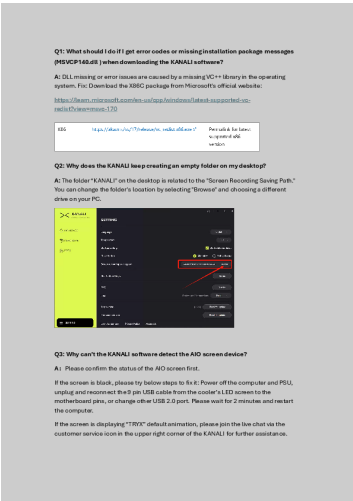
9.1 Customer Support

For technical assistance, troubleshooting, or warranty claims, please contact TRYX customer support through their official website or the contact information provided in your product packaging. You may also find additional resources, FAQs, and updated drivers/software on the TRYX support page.

Additional resources:

- [Installation Manual \(PDF\)](#)
- [Troubleshooting Guide \(PDF\)](#)
- [User Manual \(PDF\)](#)
- [Visit the TRYX Store on Amazon](#)





[pdf] Troubleshooting Guide Guide

TRYX PANORAMA Common Q A Yvette Jiang Panorama SE 360 ARGB 360mm AIO Rotatable 6 5
AMOLED Curved Screen 3D Anamorphic Effect Customizable Cooler Asetek Adela 280w TDP Fan Intel
LGA 1851 1700 1200 115X AMD AM5 AM4PANORAMA Troubleshooting Guide Shanghai Technology Co
Ltd AM4 B0DQTZFS7481YDrcdCsnLm media amazon images I 81YDrcdCsnL |||

Q1: What should I do if I get error codes or missing installation package messages
MSVCP140.dll when downloading the KANALI software A: DLL missing or error
issues are caused by a missing VC library in the operating system. Fix: Download the
X86C package from Microsoft s official website: http...
lang:en score:31 filesize: 318.53 K page_count: 2 document date: 2025-04-18