



Manuals.plus /

› SEAOURA /

› SEAOURA 24/7 LED Aquarium Light Instruction Manual

SEAOURA SR-628

SEAOURA 24/7 LED Aquarium Light Instruction Manual

Model: SR-628 (20W for 12-18 inch tank)

Brand: SEAOURA

1. INTRODUCTION AND OVERVIEW

This manual provides detailed instructions for the installation, operation, and maintenance of your SEAOURA 24/7 LED Aquarium Light. Designed with advanced features, this light offers customizable illumination to create an optimal environment for your aquatic life and plants.

The light features 6 rows of high-performance LEDs, smart touch control, and multiple customizable modes including DIY, Day/Night, and Preset Cycle. Its dual-layer aluminum body ensures efficient heat dissipation for extended lifespan.



The SEAOURA LED Aquarium Light provides vibrant and customizable lighting for your fish tank.

2. PRODUCT FEATURES

- **Premium Aquarium LED Light:** Features 6 rows of high-performance LEDs (2x5054 + 4x2835) for vibrant, flicker-free illumination.
- **Smart Touch Control:** Intuitive LCD touchscreen with 6-button navigation, 24-hour timer, and real-time mode/brightness display.
- **3 Customizable Modes:** Includes DIY (8 programmable segments), Day/Night (20-level WRGB dimming), and Preset Cycle (sunrise/daylight/sunset/moonlight).
- **Efficient Heat Dissipation:** Dual-layer aluminum body and multi-channel heat dissipation design extend the light's lifespan.
- **9 Built-in Color Settings:** Full Spectrum, Red, Green, Blue, Purple, Orange, Cyan, Yellow, and White, plus a dynamic cycle mode.
- **4 Natural Weather Modes:** Simulate sunrise, sunset, cloudy, and lightning effects, integrable into DIY segments.

3. INCLUDED COMPONENTS

Please ensure all components are present before installation:

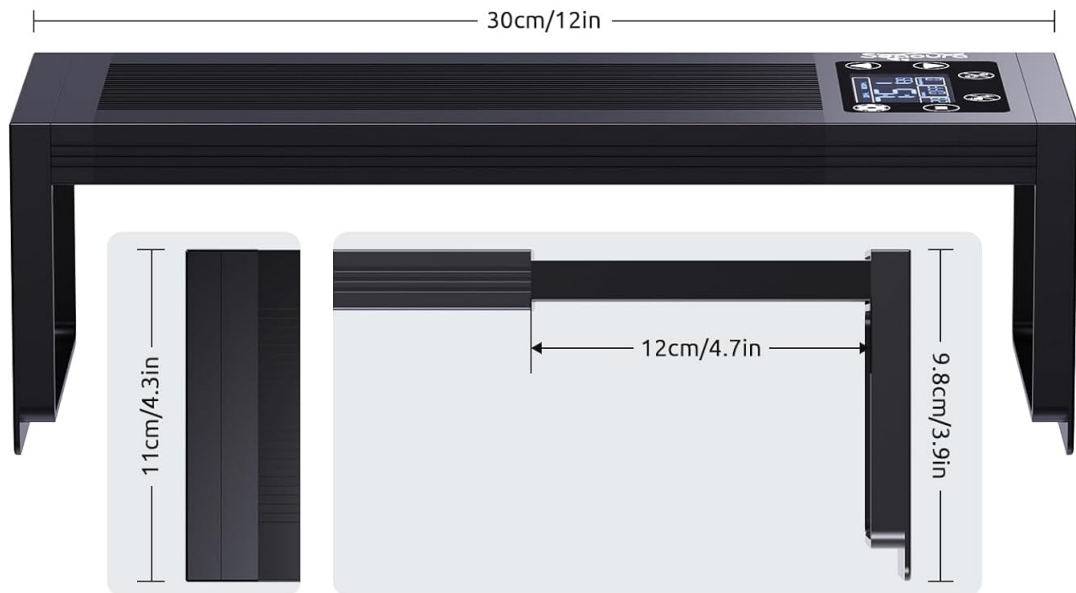
- SEAOURA LED Aquarium Lamp
- Extendable Holder
- Power Cable
- User Manual (this document)

4. SETUP AND INSTALLATION

Follow these steps to properly set up your aquarium light:

1. **Unpack Components:** Carefully remove all items from the packaging and inspect for any damage.
2. **Attach Extendable Holders:** Slide the extendable holders onto both ends of the light fixture. These holders allow for adjustment to fit various tank sizes.

DIMENSIONS AND SPECIFICATIONS



Model	SR-628-30CM	SR-628-45CM	SR-628-60CM	SR-628-75CM	SR-628-90CM	SR-628-120CM
Application size	12-18 INCH	18-24 INCH	24-30 INCH	30-36 INCH	36-42 INCH	48-54 INCH
Input Voltage	AC100-240					
Output Voltage	DC 20V					
Watt	20w	26w	36w	56w	68w	84W
Led Quantity	72PCS	108PCS	144PCS	180PCS	216PCS	252PCS
Rendering Index	92					

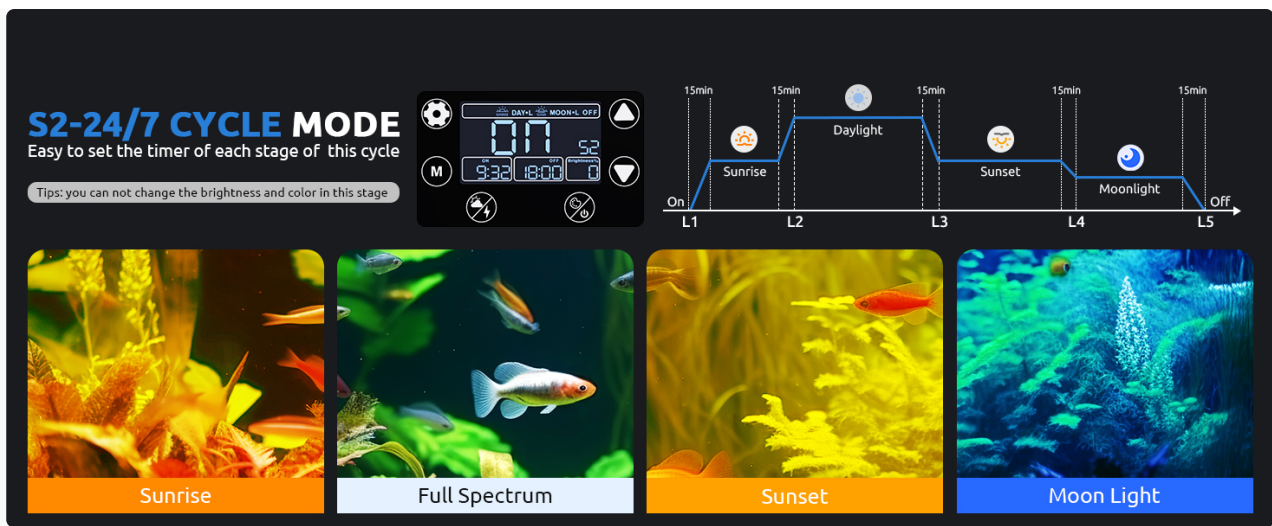
The extendable holders provide flexible mounting options for your aquarium.

- Position the Light:** Place the light fixture securely on top of your aquarium, ensuring the extendable holders rest firmly on the tank edges. Adjust the length of the holders to center the light over your tank.
- Connect Power:** Plug the power cable into the light fixture and then into a suitable power outlet. Ensure the power outlet is protected from water splashes.

5. OPERATING INSTRUCTIONS

Control Panel Overview

The light features an intuitive LCD touchscreen control panel with 6 buttons for easy navigation and setting adjustments.



Familiarize yourself with the control panel buttons for optimal operation.

- **Time Setting Button (Gear Icon):** Short press to switch 12/24 hours format, save and exit any settings. Long press for 3 seconds to preset the time format and local time into any mode settings.
- **M Button:** Short press to switch between S1 (Day-L & Moon-L), S2 (24/7 Cycle), and S3 (DIY 8-Section Timer) modes.
- **Up & Down Buttons (Triangles):** Adjust settings like 12/24 hours format, brightness, timer number, ON/OFF.
- **Weather Button (Cloud/Lightning Icon):** Short press to switch between 4 weather colors.
- **Color Setting Button (Lightbulb Icon):** Short press to turn on or switch the color of the light. Long press for 3 seconds to turn off the light.

Restore Factory Settings: Press and hold the SET + DOWN key at the same time for more than 5 seconds. The LCD display will automatically restore to factory parameters in 2 seconds.

Setting Local Time

To set the current local time on your aquarium light:

1. Press and hold the **Time Setting Button (Gear Icon)** for three seconds. The display will enter time setting mode.
2. Use the **UP/DOWN buttons** to select between 12-hour or 24-hour format.
3. Once chosen, press the **Time Setting Button** again. The hour digits will flash. Use the **UP/DOWN buttons** to set the hour.
4. Press the **Time Setting Button** again, and the minute digits will flash. Adjust the minutes with the **UP/DOWN buttons**.
5. Finally, press the **Time Setting Button** one more time to save your settings and exit.

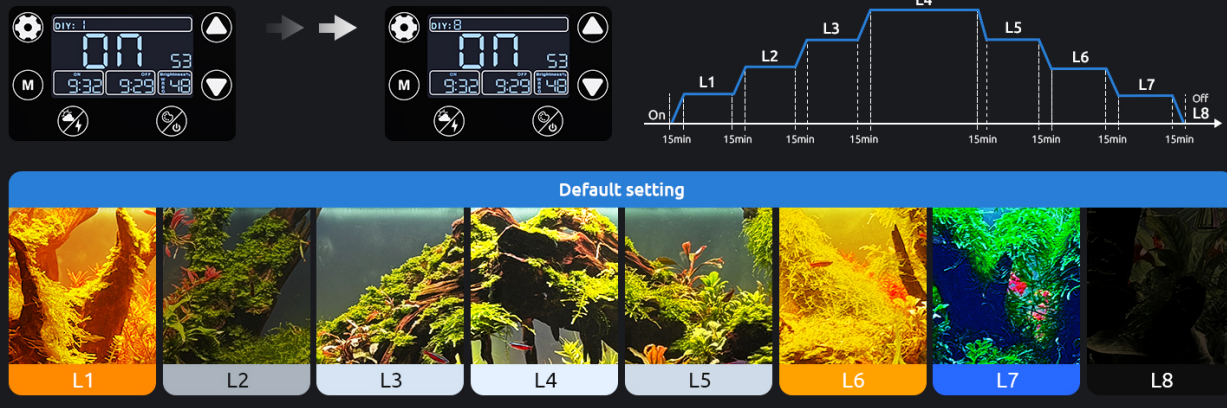
Your browser does not support the video tag.

Video: How to Set the Local Time on your SEAOURA Aquarium Light.

S1 Day-L & Moon-L Mode (Daylight & Moonlight with Timer)

This mode allows you to set specific ON/OFF times for daylight and moonlight phases, with adjustable brightness and color for the daylight phase, and 9 colors for the moonlight phase.

S3-DIY MODE



S1 mode provides customizable daylight and moonlight cycles.

1. **Enter S1 Mode:** Press the **M** button once. "S1" will appear on the display, and "DAY-L" will start flashing.
2. **Select ON/OFF:** Use the **UP/DOWN** buttons to toggle between ON and OFF. When "ON" is displayed, press and hold the **Time Setting Button (Gear Icon)** to enter the settings.
3. **Set DAY-L ON Time:** The hour digits at the bottom left (ON position) will flash. Use the **UP/DOWN** buttons to adjust the hour. Press the **Time Setting Button** again to make the minute digits flash. Use the **UP/DOWN** buttons to set the minutes.
4. **Adjust Light and Brightness (DAY-L):** Press the **Time Setting Button** again. The display will show "BRIGHTNESS%" flashing. Use the **UP/DOWN** buttons to adjust the brightness. "W" (white) will flash. Use the **UP/DOWN** buttons to adjust the W brightness. Press the **Color Setting Button (Lightbulb Icon)** again, and "R" (red) will flash. Use the **UP/DOWN** buttons to adjust the R brightness. Repeat this process for "B" (blue) and "G" (green) by pressing the **Color Setting Button** and adjusting the brightness accordingly.
5. **Set DAY-L OFF Time:** Press the **Time Setting Button** to set the DAY-L phase close time. The hour digits under the center of the display will flash. Use the **UP/DOWN** buttons to set the hour. Press the **Time Setting Button**, and the minute digits will flash. Adjust the minutes with the **UP/DOWN** buttons.
6. **Set MOON-L ON Time:** Long press the **M** button again to set MOON-L phase. The display will show MOON-L flashing. Use the **UP/DOWN** buttons to select ON/OFF. When "ON" is displayed, press and hold the **Time Setting Button** to adjust the settings. Set the hour and minutes for the MOON-L ON time using the **UP/DOWN** as described above.
7. **Adjust Light and Brightness (MOON-L):** Press the **Time Setting Button** again. The display will show "BRIGHTNESS%" flashing. Use the **UP/DOWN** buttons to adjust the brightness. Adjust the system brightness for Full spectrum - red - green - blue - purple - orange - cyan - yellow - white by pressing the **Color Setting Button**.
8. **Finalize Settings:** After adjusting brightness for the MOON-L phase, press the **Time Setting Button** to complete the settings and enter the mode.

Your browser does not support the video tag.

Video: How to Set S1 Daylight+Moonlight Mode.

Your browser does not support the video tag.

Video: How to Set S1 Moonlight Mode.

Your browser does not support the video tag.

Video: How to Set S1 Daylight Mode.

S2 24/7 Cycle Mode

This mode provides a fixed 5-stage lighting cycle (Sunrise, Daylight, Sunset, Moonlight, Off) with pre-set brightness levels. You can set the timer for each stage.



S2 mode offers a continuous 24/7 lighting cycle.

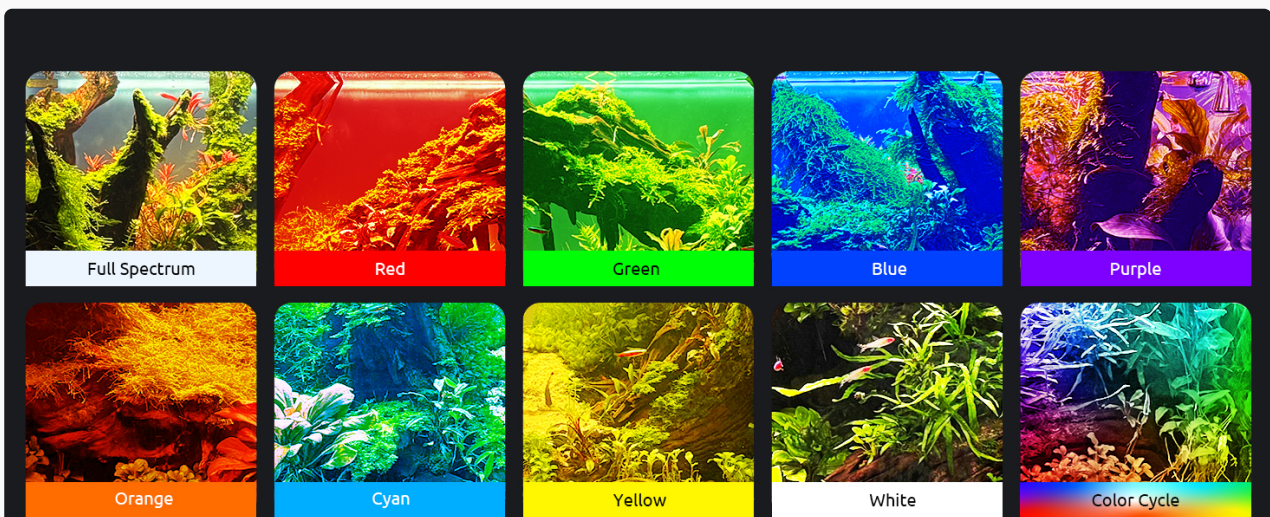
1. **Enter S2 Mode:** Press the **M** button twice. The display will read "S2".
2. **Select ON/OFF:** Use the **UP/DOWN** buttons to select ON/OFF. When the display shows ON, press and hold the **Time Setting Button (Gear Icon)** for 3 seconds to enter the 24/7 mode settings.
3. **Set Time for L1 (Sunrise):** The sunrise icon (SUNRISE) and hour digits will flash, indicating you are setting the time for L1. Adjust the hour with the **UP/DOWN** buttons, then press "SET" to configure the minutes. Use the **UP/DOWN** buttons to adjust the minutes, then press "SET" again to finalize the end time for L1.
4. **Set Time for L2 through L5:** Repeat this process to set the time segments for L2 (Daylight), L3 (Sunset), L4 (Moonlight), and L5 (Off). Adjust the hour with the **UP/DOWN** then press "SET" to configure the minutes. Use the "UP/DOWN" buttons to adjust the minutes, then press "SET" to next period. The last step is press "SET" to save this setting.

Your browser does not support the video tag.

Video: How to Set S2 24/7 Cycle Mode.

S3 DIY 8 Stages Mode

This mode allows for complete customization of 8 different lighting stages, including individual color and brightness settings for each stage.



S3 DIY mode offers extensive customization for your aquarium lighting.

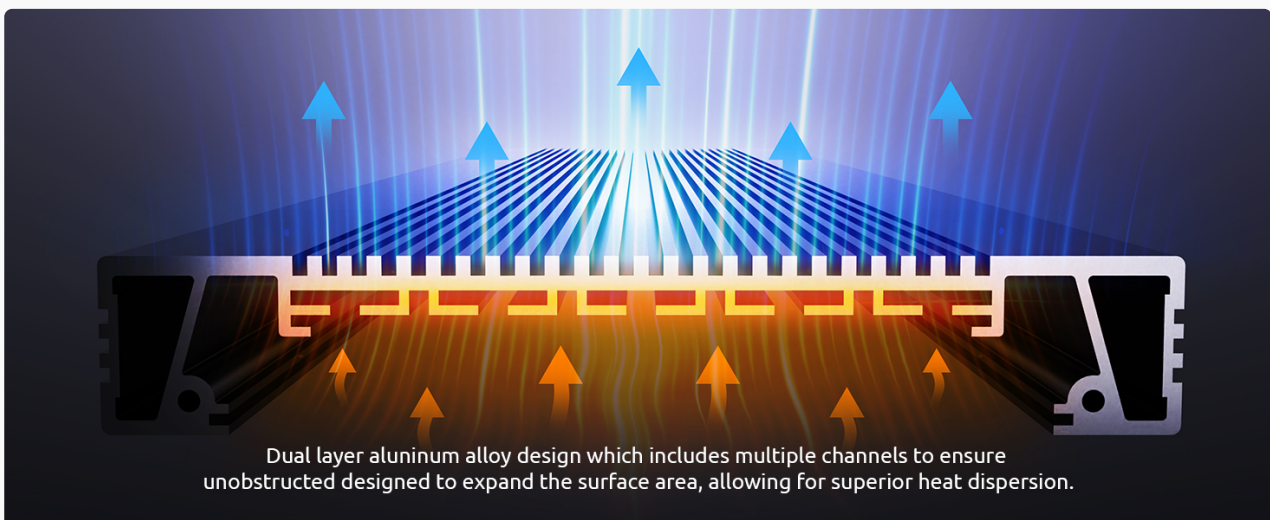
1. **Enter S3 DIY Mode:** Press the **M button** three times. When the display shows "DIY", you are in the S3 DIY mode.
2. **Select ON/OFF:** Next, press the **UP/DOWN buttons** to toggle between ON and OFF. When "ON" is displayed, press and hold the **Time Setting Button (Gear Icon)** for 3 seconds to enter DIY mode.
3. **Configure DIY Section 1:** In DIY Section 1, the hour digits in the lower-left corner of the display will flash. Use the **UP/DOWN buttons** to adjust the hour, then press "SET" to adjust the minutes. Use the "UP/DOWN" buttons to set the minutes, and press "SET" again to enter light selection mode. The BRIGHTNESS% in the lower-right corner will flash. Adjust the brightness using the **UP/DOWN buttons**, "W" flash, then adjust the W brightness with the **UP/DOWN buttons** press the "LIGHT" button to switch colors. "R" flash, then adjust the R brightness. Repeat this process for "B" and "G" by pressing the "UP/DOWN" button and adjusting the brightness accordingly. Then press the "SET" button to configure the hours and minutes. Use the "Up/Down" buttons to adjust the hours and minutes, and then press the "SET" button again to confirm the end time for item DIY 1.
4. **Configure Sections 2 through 8:** Repeat the procedure to set the time and lighting for sections 2 through 8. Note that Section 2's start time will automatically be set to the end time of Section 1, so no additional settings are required. Use the "UP/DOWN" buttons to adjust the time and the brightness of the light. Press the "LIGHT" button to carry out the next color setting. Finally, press the "SET" button to save this setting.

Your browser does not support the video tag.

Video: How to Set S3 DIY 8 Stage Modes.

Color Options

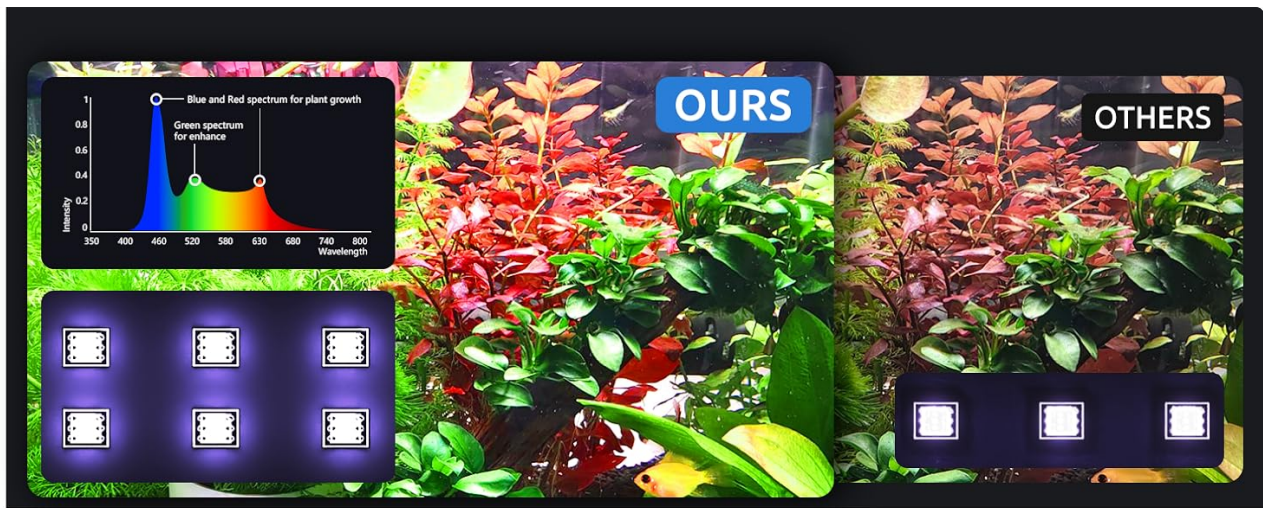
The light offers 9 built-in color settings and a dynamic color cycle mode to enhance your aquarium's appearance.



Choose from a variety of colors to suit your preference.

Brightness Control

Adjust the light intensity with 20 levels of brightness control to perfectly suit your aquarium's needs and time of day.



Fine-tune the brightness from 10% to 100%.

Weather Modes

Simulate natural weather conditions in your aquarium with four dynamic weather modes.

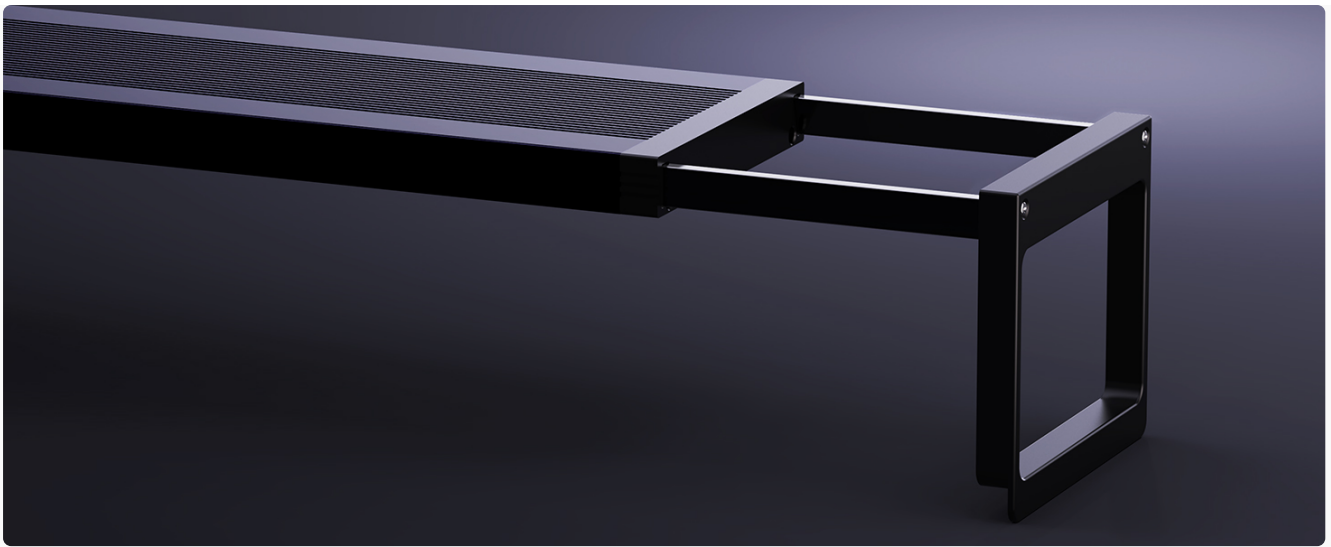


Experience dynamic weather effects in your tank.

6. MAINTENANCE

Regular maintenance ensures the longevity and optimal performance of your SEAOURA LED Aquarium Light.

- **Cleaning:** Gently wipe the light fixture with a soft, damp cloth to remove dust and water spots. Ensure the light is unplugged before cleaning. Do not use abrasive cleaners or solvents.
- **Heat Dissipation:** Ensure the heat dissipation fins on the top of the light are not obstructed to allow for proper airflow.



The dual-layer aluminum design ensures efficient heat dissipation.

- **Water Contact:** While the light is designed to be splash-resistant, avoid submerging it in water. If water accidentally gets into the control panel or internal components, unplug the light immediately and allow it to dry completely before re-using.

7. TROUBLESHOOTING

Problem	Possible Cause	Solution
Light does not turn on.	Power cable not properly connected; Power outlet issue; Light in OFF mode.	Check power connections; Test outlet with another device; Ensure light is set to ON in the selected mode.
Clock/Timer settings reset after power outage.	No internal battery backup for time.	Only the current time needs to be reset. All other programmed settings (modes, brightness, etc.) are retained. Follow 'Setting Local Time' instructions.
Buttons are unresponsive or difficult to press.	Moisture or debris on the touch panel; Manufacturing defect.	Ensure the touch panel is clean and dry. If issue persists, contact customer support.
Light is too bright/dim or colors are not as expected.	Incorrect brightness/color settings; Mode not configured correctly.	Review the operating instructions for S1, S2, or S3 mode to adjust brightness and color settings. Ensure you are in the correct mode.

8. SPECIFICATIONS

Feature	Specification
Model Number	SR-628
Size (for this model)	20W for 12-18 inch tank
Wattage	20 watts
Input Voltage	AC100-240V
Output Voltage	DC 20V
Light Source Type	LED (6 rows: 2x5054 + 4x2835)
Control Method	Touch Control
Material	Aluminum
Item Dimensions (LxWxH)	11 x 3.5 x 0.6 inches
Item Weight	1.83 pounds

9. WARRANTY AND SUPPORT

Your SEAOURA LED Aquarium Light comes with a 1-month no-reason return policy from the date of purchase. For any product inquiries, technical support, or warranty claims, please contact SEAOURA customer service through the platform where you purchased the product or visit the official SEAOURA store on Amazon:

Visit the SEAOURA Store

Please retain your proof of purchase for warranty purposes.