

Redmi Note 14 Pro+ 5G Prime Edition

Redmi Note 14 Pro+ 5G Prime Edition User Manual

Model: Note 14 Pro+ 5G Prime Edition

1. INTRODUCTION

This manual provides essential information for setting up, operating, maintaining, and troubleshooting your Redmi Note 14 Pro+ 5G Prime Edition smartphone. Please read this guide thoroughly to ensure optimal performance and longevity of your device.



Image: Redmi Note 14 Pro+ 5G Prime Edition overview.

2. WHAT'S IN THE BOX

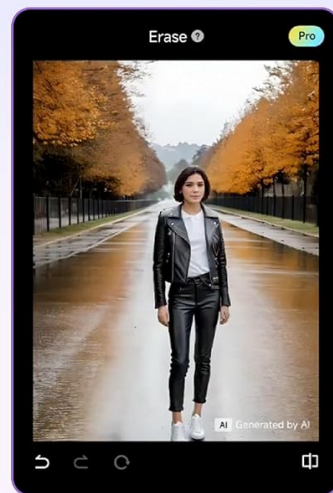
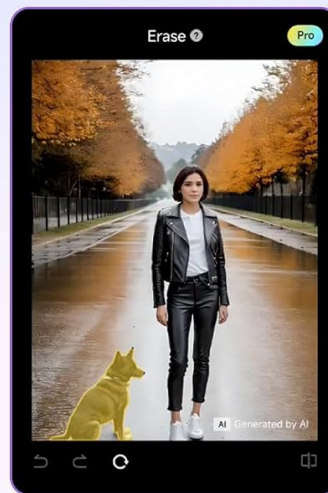
Verify that all items are present in your product packaging:

- Handset
- 90W Charger
- Type C USB Cable
- Sim Eject Tool
- Protective Case
- Quick Start Guide
- Warranty Card

20+ Flagship AI Features

AI Erase Pro

Erase whatever you want



AI Image Expansion

Expand your best memories



Before

After

Image: Contents of the Redmi Note 14 Pro+ 5G Prime Edition box.

3. SETUP

3.1. Inserting SIM Cards

1. Locate the SIM card tray on the side of your device.
2. Insert the SIM eject tool into the small hole next to the tray and press firmly until the tray pops out.
3. Place your Nano-SIM cards into the designated slots on the tray. Ensure the gold contacts face downwards. This device supports Dual Nano-SIM.

- Carefully reinsert the tray into the phone.

2.5X Telephoto

Portrait Artist



Redmi Note 14 (Pro+ 5G)

24mm | f/1.6 | 1/1282s | ISO50



Redmi Note 14 (Pro+ 5G)

24mm | f/1.6 | 1/568s | ISO50



Redmi Note 14 (Pro+ 5G)

60mm | f/2.0 | 1/100s | ISO640



Redmi Note 14 (Pro+ 5G)

24mm | f/1.6 | 1/100s | ISO320

Image: Inserting SIM cards into the device.

3.2. Initial Power On and Configuration

- Press and hold the Power button until the Redmi logo appears.
- Follow the on-screen prompts to select your language, connect to a Wi-Fi network, and set up your Google account.
- Configure security features such as PIN, pattern, or fingerprint recognition. The in-display fingerprint scanner provides convenient unlocking.

4. OPERATING INSTRUCTIONS

4.1. Navigation and User Interface

Your Redmi Note 14 Pro+ 5G Prime Edition runs on Android 14 with Xiaomi HyperOS. Navigate through the system using gestures or on-screen buttons. Swipe up from the bottom for the app drawer, swipe down from the top for notifications and quick settings.

4.2. Display Features

The device features a 6.67-inch 1.5K Adaptive Curved AMOLED Display with a 120Hz refresh rate, offering smooth visuals and vibrant colors. It supports Dolby Vision and HDR10+ for enhanced media consumption, with a peak brightness of 3000 nits for clear visibility even in bright sunlight.

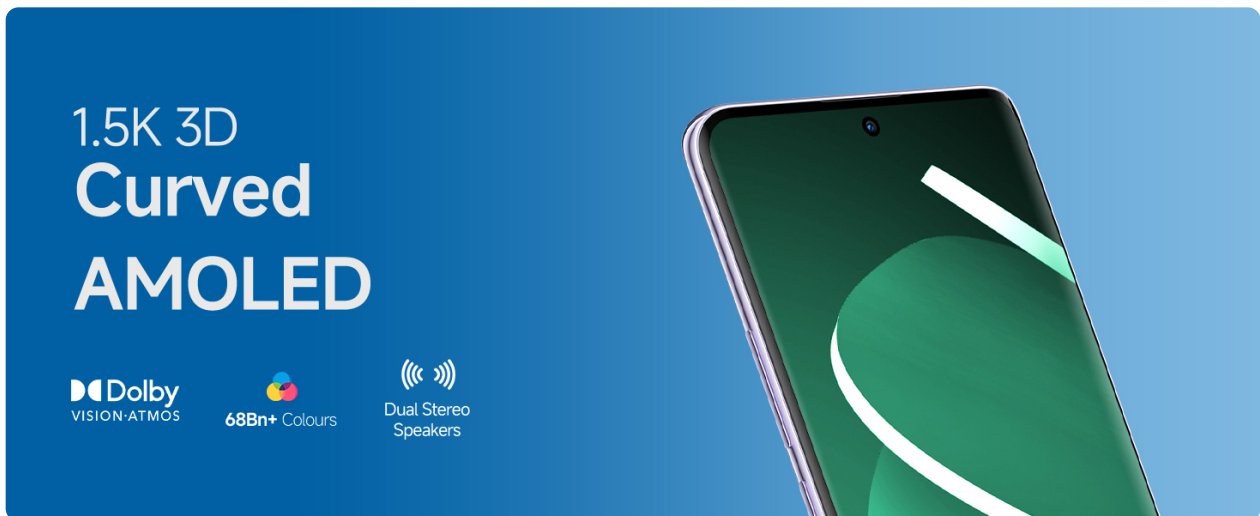


Image: Curved AMOLED display of the Redmi Note 14 Pro+ 5G Prime Edition.



Image: Display features highlighting 3000 nits brightness and 1.5K Curved AMOLED technology.

4.3. Audio

The device is equipped with dual stereo speakers and supports Dolby Atmos for an immersive audio experience. Note that this model does not include a 3.5mm headphone jack.

5. CAMERA FEATURES

The Redmi Note 14 Pro+ 5G Prime Edition features a versatile camera system:

- **Primary Camera:** 50MP Light Hunter 800 with f/1.6 large aperture and 1/1.55" sensor size.
- **Telephoto Camera:** 50MP with f/2.0 aperture and 1/2.76" sensor size, offering 2.5X optical zoom.
- **Ultra-Wide Camera:** 8MP with f/2.2 aperture and 1/1.4" sensor size.
- **Front Camera:** 20MP for high-quality selfies and video calls.

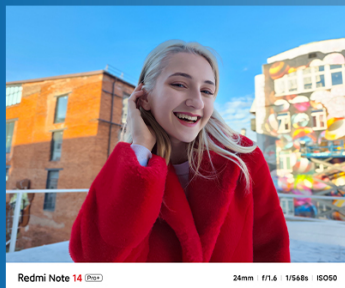
Video recording supports 1080p and 4K resolutions at various frame rates (30fps, 60fps, 120fps).

Flagship Imagery



Image: Detailed camera specifications for the Redmi Note 14 Pro+ 5G Prime Edition.

Telephoto Portrait Artist



2.5X Optical Zoom



50MP Camera

Image: Examples of portrait photography using the telephoto lens.

6. BATTERY AND CHARGING

The device is powered by a large 6200 mAh battery, designed for extended usage. It supports 90W HyperCharge technology, allowing for rapid charging. The battery incorporates advanced Silicon-carbon Solid Electrolyte Tech for increased capacity and efficiency.

Segment's Largest & Most Advanced Battery*

1.5* Days of Usage on a single charge
22% Capacity Increase over predecessor



Image: Internal view of the phone's large 6200mAh battery with 90W HyperCharge.

Silicon-carbon Solid Electrolyte Tech

Redmi Note for the first time uses high density silicon carbon battery delivering 22% increase in capacity in a smaller battery size.



Image: Explanation of Silicon-carbon Solid Electrolyte Technology.

7. PERFORMANCE

The Redmi Note 14 Pro+ 5G Prime Edition is powered by the Snapdragon 7s Gen 3 Processor, built on a 4nm process. This 2.5 GHz Octa-core processor (4x Cortex A-720 + 4x A520) provides efficient performance for daily tasks and gaming. It also features a Spectra Triple ISP for enhanced image processing and an On-Device AI engine. The device comes with 8GB of RAM and 256GB of internal storage.

The phone runs on Xiaomi HyperOS, which offers 3 years of OS updates and 4 years of security updates.

Snapdragon® 7s

Gen 3

TSMC 4nm

4xA720 + 4xA520

On Device AI

Spectra Triple ISP

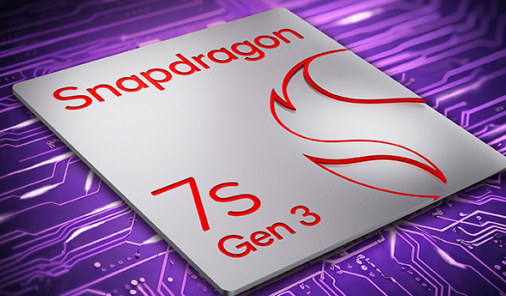


Image: Snapdragon 7s Gen 3 Processor details.

Xiaomi T1 Surge Chip

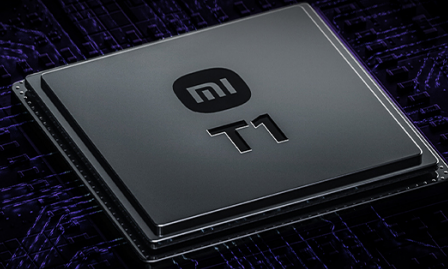


Image: Xiaomi T1 Surge Chip.

Stunning Colours

Phantom
Purple

Ivy
Green

Titan
Black



Image: Available color options for the Redmi Note 14 Pro+ 5G Prime Edition.

8. AI FEATURES

The Redmi Note 14 Pro+ 5G Prime Edition integrates several AI-powered features to enhance user experience:

- **AI Erase Pro:** Allows users to remove unwanted objects from photos.
- **AI Image Expansion:** Expands the boundaries of your photos using AI.
- **AI Interpreter:** Facilitates real-time language interpretation.
- **AI Subtitles:** Transcribes and translates audio content.
- **Circle to Search:** Enables searching for information by circling objects on the screen.
- **Gemini Live:** An advanced personal assistant for various tasks.

SuperPowered by AI

*This is just a snippet of what the users will get out-of-the box, stay tuned for the upcoming updates on your SuperNote for SuperAI

Image: Highlighting the AI capabilities of the device.

Image: AI Erase Pro and AI Image Expansion in action.

Brightest SuperNote



1.5K Curved AMOLED

Dolby
VISION

68Bn+ Colours



TUV Triple
Eye Protection

Image: AI Interpreter feature.



Image: Circle to Search feature.

9. DURABILITY AND PROTECTION

The Redmi Note 14 Pro+ 5G Prime Edition is built with enhanced durability features:

- **IP68 + IP69 Support:** Provides resistance against dust and water ingress, making the device waterproof up to 6 feet.
- **Corning Gorilla Glass Victus 2:** Protects the front display from scratches and drops.
- **Corning Gorilla Glass 7i:** Provides additional protection for the device's back panel.

Flagship Resistance IP68 + IP69* Support



Image: Device demonstrating IP68+IP69 water resistance.

Dual Sided Corning® Protection*



Image: Corning Gorilla Glass Victus 2 and 7i protection.

10. MAINTENANCE

To ensure the longevity and optimal performance of your Redmi Note 14 Pro+ 5G Prime Edition, follow these maintenance guidelines:

- **Cleaning:** Use a soft, lint-free cloth to clean the screen and body. Avoid abrasive materials or harsh chemicals.
- **Software Updates:** Regularly check for and install system updates to benefit from the latest features, security patches, and performance improvements.
- **Battery Care:** Avoid extreme temperatures. While the device supports fast charging, occasional full charge cycles can help maintain battery health.
- **Storage Management:** Periodically clear unnecessary files and apps to free up storage space and maintain smooth operation.

11. TROUBLESHOOTING

If you encounter issues with your device, try the following steps:

- **Device Not Responding:** Press and hold the Power button for about 10-15 seconds to force a restart.
- **App Crashes:** Clear the cache and data of the problematic app in Settings > Apps. If the issue persists,

reinstall the app.

- **Network Issues:** Toggle Airplane Mode on and off. Check your SIM card insertion. Reset network settings in Settings > System > Reset options.
- **Overheating:** Close background applications and reduce screen brightness. Avoid using the phone while charging or in direct sunlight for extended periods.
- **Factory Reset:** As a last resort, you can perform a factory data reset (Settings > System > Reset options > Erase all data). **Warning: This will erase all data on your device. Back up important information before proceeding.**

12. SPECIFICATIONS

Feature	Specification
Brand	Redmi
Model	Note 14 Pro+ 5G Prime Edition
Operating System	Android 14 (with Xiaomi HyperOS)
Processor	Snapdragon 7s Gen 3 (2.5 GHz, 8 Cores, 4nm)
RAM	8 GB
Internal Storage	256 GB
Display Size	6.67 Inches
Display Type	1.5K Adaptive Curved AMOLED Display
Max Display Resolution	1536 x 720 (446 PPI)
Rear Camera	50MP (Primary) + 50MP (Telephoto) + 8MP (Ultra-Wide)
Front Camera	20 MP
Battery Capacity	6200 mAh
Charging	90W HyperCharge
SIM Card Slot	Dual Nano-SIM
Connectivity	5G, Bluetooth, Wi-Fi
Connector Type	USB Type C
Biometric Security	Fingerprint Recognition (In-display)
Water Resistance Level	Waterproof (IP68 + IP69 Support)
Protection	Corning Gorilla Glass Victus 2 (Front), Corning Gorilla Glass 7i (Back)
Dimensions	18 x 8 x 6 Centimeters

Feature	Specification
Weight	230 Grams

13. WARRANTY AND SUPPORT

13.1. Warranty Information

Your Redmi Note 14 Pro+ 5G Prime Edition comes with a **1 Year Manufacturer Warranty** for the phone itself and a **6 Months Warranty** for in-box accessories from the date of purchase. Please refer to the warranty card included in your packaging for detailed terms and conditions.

13.2. Manufacturer Contact Information

Manufacturer: Xiaomi Technology India Pvt. Ltd.

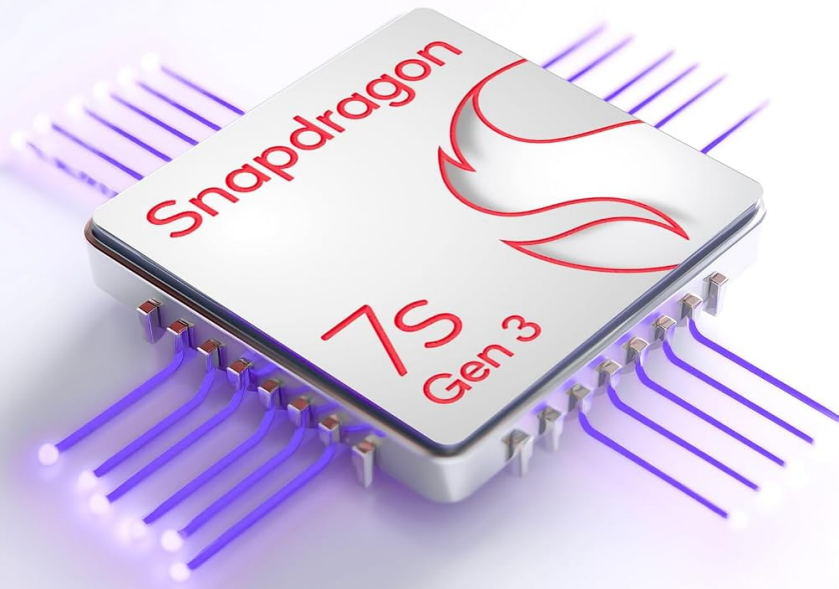
Address: Orchid Block, EmbassyTech Village, Devarabeesanahalli, Bangalore - 560103, Karnataka, India.

13.3. Xiaomi Care

Xiaomi provides a trusted care network with certified professionals. You can find support through:

- Available across 19,000+ Pin Codes.
- 1500+ Authorized Service Centre Network.
- ISO-certified Service Centers.
- 100% Genuine Spare Parts.

Snapdragon[®] 7s Gen 3



TSMC 4nm

1.25 GHz
Cortex A-720

8 Cores

Spectra Triple ISP

Image: Xiaomi Care service network details.