

[Manuals.plus](#) /

› [Alpicool](#) /

› [Alpicool T50 50L Portable Refrigerator Freezer User Manual](#)

Alpicool T50

Alpicool T50 50L Portable Refrigerator Freezer User Manual

Model: T50

1. INTRODUCTION

This manual provides essential information for the safe and efficient operation of your Alpicool T50 50L portable refrigerator freezer. Please read these instructions carefully before use and retain them for future reference. This appliance is designed for cooling and freezing food and beverages in various environments, including vehicles, camping, and marine settings.



Image 1: Alpicool T50 50L Portable Refrigerator Freezer. This image shows the overall design of the portable refrigerator, highlighting its compact and robust construction suitable for various uses.

2. SAFETY INSTRUCTIONS

- Ensure the power supply voltage matches the appliance's requirements (12V/24V DC or 100-240V AC).
- Do not operate the appliance if the power cord is damaged. Contact qualified service personnel for repairs.
- Avoid placing the appliance in direct sunlight or near heat sources. Ensure adequate ventilation around the unit.
- Do not immerse the appliance in water or expose it to heavy rain.
- Keep the appliance on a stable, level surface to ensure proper operation and prevent tipping.
- Do not block the ventilation openings.
- Unplug the appliance before cleaning or performing any maintenance.
- This appliance is not intended for use by persons with reduced physical, sensory, or mental capabilities unless supervised or instructed.

3. PACKAGE CONTENTS

Verify that all items are present in the package:

- Car Refrigerator (x1)
- 2.5M DC Power Cord (x1)
- AC Power Cord with Adapter (x1)
- Removable Divider (x1)
- User Manual (x1)



Image 2: Interior view of the Alpicool T50 with removable divider. This image illustrates the internal layout, including the removable divider and baskets, which are part of the package contents.

4. SETUP

1. **Unpacking:** Carefully remove the refrigerator from its packaging. Retain packaging materials for potential future transport or returns.
2. **Placement:** Place the refrigerator on a firm, level surface. Ensure there is at least 10 cm (4 inches) of space around all sides for proper ventilation. Avoid placing it on soft surfaces like carpets that could block airflow.

3. **Initial Cleaning:** Before first use, wipe the interior and exterior with a damp cloth and mild detergent. Dry thoroughly.
4. **Power Connection:** Connect the appropriate power cord (DC for vehicle, AC for home) to the refrigerator's power input.

5. OPERATING INSTRUCTIONS

5.1 Power Supply

The Alpicool T50 supports multiple power input options:

- **12-24V DC:** Connect using the provided DC power cord to a vehicle's cigarette lighter socket or a compatible 12V/24V power source.
- **100-240V AC:** Connect using the provided AC power cord and adapter to a standard household power outlet.
- **Power Station:** The unit can also be powered by a portable power station using either AC or DC connections.

PRODUCT FEATURES



LARGE CAPACITY



LED LIGHT



DRAIN PLUG

Image 3: Illustration of three power supply methods. This image visually explains how to connect the Alpicool T50 to AC home power, DC car power, or a portable power station.

5.2 Temperature Control and Modes

The Alpicool T50 features a control panel for setting the desired temperature and operating mode.

- **Temperature Adjustment:** Use the '+' and '-' buttons on the control panel to set the desired temperature. The display will show the current and target temperatures.
- **ECO Mode:** This mode (45W) is designed for energy saving, suitable for maintaining temperature over longer periods with lower power consumption.
- **MAX Mode:** This mode (60W) provides fast cooling, ideal for quickly reaching the desired temperature. The unit can cool from 20°C to 0°C in approximately 15 minutes (under ambient temperature 25°C with an empty fridge). It can reach -20°C in about 75 minutes.

Refrigerator Features

Rated Power Input:	80W
Power Input(V):	12/24V DC, 100-240V AC
Current(A):	DC 6,0A/3,0A, AC 1,5-0,7A
Temperature Range:	-20°C -20°C (-4°F -68°F)
Weight:	16kg
Capacity:	50L
External Dimension (LxWxH) :	72,3x36x45,5cm (28,5"x14,2"x17,9")

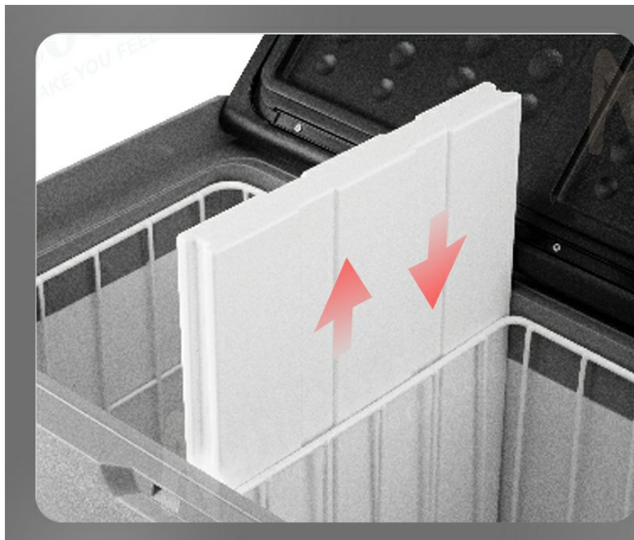


Image 4: ECO and MAX cooling modes. This image details the power consumption and cooling speed differences between the energy-saving ECO mode and the fast-cooling MAX mode.

5.3 Dual Zone Functionality

The removable divider allows the T50 to operate as a dual-zone unit (refrigerator and freezer) or a single-zone unit.

- **With Divider:** The removable sensor separator divides the internal space into two temperature zones, allowing for simultaneous refrigeration and freezing.
- **Without Divider:** Removing the divider converts the entire unit into a single large refrigerator or freezer, with temperature adjustable via the upper screen.



Package List

- ✓ Car Refrigerator X1
- ✓ 2,5M DC Power Cord X1
- ✓ AC Power Cord with Adapter X1
- ✓ Removable Divider X1
- ✓ User Manual X1

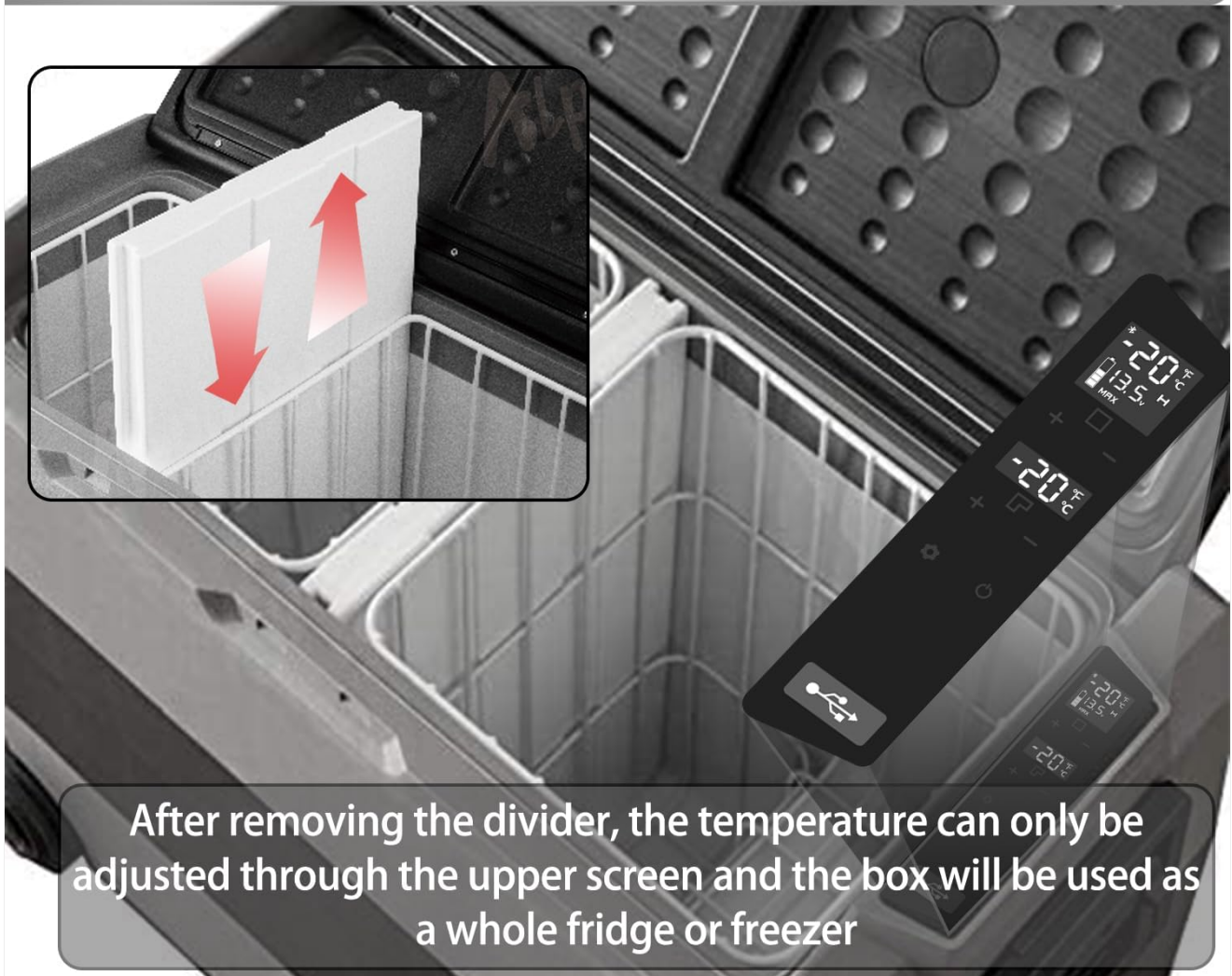
Image 5: Two internal baskets and removable divider. This image demonstrates the functionality of the removable divider, allowing for flexible use of the internal storage space.

5.4 Battery Protection

The unit includes a 3-level battery protection system to prevent your vehicle's battery from draining completely.

- **Modes:** High (H), Medium (M), and Low (L).
- **Setting:** The factory setting is High. Adjust the mode based on your power source. Use 'M' or 'H' when connected to car power, and 'L' when connected to a portable or backup battery.
- **Voltage Cut-out/Cut-in:** The system automatically cuts off power when the input voltage drops below a set threshold and reconnects when it rises. For 12V DC, cut-out voltages are 11.1V (H), 10.1V (M), 9.0V (L). For 24V DC, cut-out voltages are 24.3V (H), 22.3V (M), 21.3V (L).

TWO INTERNAL BASKETS & REMOVABLE DIVIDER



After removing the divider, the temperature can only be adjusted through the upper screen and the box will be used as a whole fridge or freezer

Image 6: Alpicool T50 in a car trunk. This image shows the portable refrigerator positioned in a vehicle, illustrating a common use case where battery protection is crucial.

6. MAINTENANCE

- **Cleaning:** Regularly clean the interior and exterior with a soft cloth and mild detergent. Do not use abrasive cleaners or harsh chemicals.
- **Defrosting:** The unit features manual defrosting. If ice builds up, turn off the appliance, unplug it, and allow the ice to melt naturally. Use a soft cloth to wipe away melted water. Do not use sharp objects to remove ice.
- **Ventilation:** Keep the ventilation grilles clear of dust and debris to ensure efficient operation.
- **Storage:** When not in use for extended periods, ensure the unit is clean and dry. Store it in a cool, dry place with the lid slightly ajar to prevent odors.

7. TROUBLESHOOTING

Problem	Possible Cause	Solution
---------	----------------	----------

Problem	Possible Cause	Solution
Appliance does not turn on	No power supply; Damaged power cord; Blown fuse.	Check power connection; Replace power cord; Check vehicle fuse.
Insufficient cooling performance	Temperature setting too high; Blocked ventilation; Excessive contents; Door not closed properly.	Adjust temperature lower; Clear ventilation; Reduce contents; Ensure door is sealed.
Unusual noise	Appliance not level; Loose components.	Place on a stable, level surface; Check for loose parts.
Error codes on display	Specific internal issue.	Refer to the full user manual for specific error code meanings or contact customer support.

8. SPECIFICATIONS

Feature	Specification
Model Number	T50
Capacity	50 Liters
External Dimensions (L x W x H)	72.3 x 36 x 45.5 cm
Weight	15.5 kg
Voltage Input	12V/24V DC, 100-240V AC
Rated Power Input	80W
Current (DC)	6.0A (12V), 3.0A (24V)
Current (AC)	1.5A - 0.7A
Temperature Range	-20°C to 20°C (-4°F to 68°F)
Cooling Method	Compressor
Refrigerant	R-600A
Annual Energy Consumption	101 kWh/year
Noise Level	45 dB
Defrost System	Manual
Special Features	Portable, Foldable handle, Wheels, USB port



3-Level Battery Protection

		High Mode	Medium Mode	Low Mode
12V DC	CUT OUT	11,1V	10,1V	9,0V
	CUT IN	12,4V	11,4V	10,9V
24V DC	CUT OUT	24,3V	22,3V	21,3V
	CUT IN	25,7V	23,7V	22,7V

● The Voltage is the theoretical value, there may be a deviation in different scenarios.
 ● M or H should be set when the product is connected to car power, and L should be set when it is connected to a portable battery or the other back-up battery.
 (*Factory setting is H.)

Image 7: 50L Large Capacity with dimensions. This image provides a visual representation of the external and internal dimensions, along with examples of how many cans or bottles can be stored.

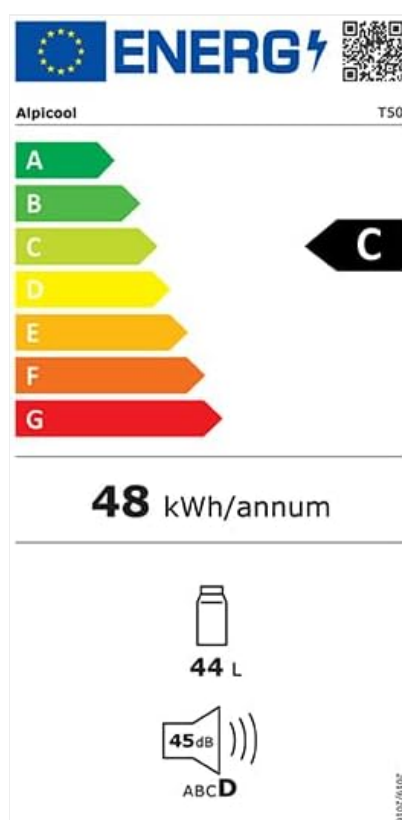


Image 8: Alpicool T50 Energy Label. This label provides information on energy efficiency, capacity, and noise level.

For detailed product information and energy efficiency data, refer to the EPREL database:

<https://eprel.ec.europa.eu/qr/2444265>

9. WARRANTY AND SUPPORT

The minimum duration of the guarantee offered by the manufacturer is 3 months. For warranty claims, technical support, or service inquiries, please contact your retailer or the Alpicool customer service department. Keep your proof of purchase for warranty validation.

