

SEHMUA RBX-H10

SEHMUA 4G LTE Cellular Trail Camera RBX-H10 User Manual

Model: RBX-H10

1. INTRODUCTION

This manual provides detailed instructions for the setup, operation, maintenance, and troubleshooting of your SEHMUA 4G LTE Cellular Trail Camera, Model RBX-H10. Please read this manual thoroughly before using the device to ensure optimal performance and longevity.



Image 1.1: Overview of SEHMUA 4G LTE Cellular Trail Cameras with integrated solar panels.

2. PRODUCT OVERVIEW

The SEHMUA RBX-H10 is a 4G LTE cellular trail camera designed for outdoor monitoring, featuring 2K HD live video streaming, a built-in solar panel for continuous power, and a rapid 0.2-second trigger speed. It is built to withstand various environmental conditions with an IP66 waterproof rating.

Key Features:

- **2K HD Live Video:** View real-time footage via the Ucon app.
- **4G LTE Connectivity:** Operates on Verizon, T-Mobile, and AT&T networks with a built-in SIM card.
- **Solar Powered:** Integrated 4W solar panel provides continuous power, reducing the need for manual charging.
- **Fast Trigger Speed:** Captures events in 0.2 seconds with an adjustable PIR sensor.
- **IP66 Waterproof:** Durable design for outdoor use in various weather conditions.

- **Low-Glow Night Vision:** 850nm infrared system with up to 82 feet range and a 120° field of view.
- **Remote Access:** Control camera settings and access footage from your smartphone.

Package Contents:

- SEHMUA 4G LTE Cellular Trail Camera (RBX-H10)
- Integrated Solar Panel
- Mounting Strap
- User Manual
- Built-in Prepaid 4G LTE SIM Card (non-detachable)

3. SETUP GUIDE

3.1. SIM Card and Data Plan Activation

Your SEHMUA trail camera comes with a built-in prepaid 4G LTE SIM card. This SIM card is non-detachable and supports local use within the U.S. only. It is pre-loaded with 300MB of trial data for initial use.

1. Upon first use, the camera will utilize the trial data.
2. Once the trial data is consumed, a data plan subscription is required for continued cellular functionality.
3. Data plans can be topped up directly through the Ucon app, with various options available (e.g., monthly, yearly).

Built-in SIM Card

Camera works on the **T-Mobile**, **AT&T**, and **Verizon** 4G/LTE networks. Built-in SIM card can automatically connects to the strongest signal (SIM card is not detachable).



Image 3.1: Illustration of the built-in SIM card and data plan subscription details.

3.2. App Installation and Camera Connection

To access live video and remote features, download the **Ucon app** on your smartphone.

1. Search for "Ucon" in your device's app store (iOS or Android).
2. Install the app and create an account.
3. Follow the in-app instructions to add your SEHMUA RBX-H10 camera. This typically involves scanning a QR code on the camera or entering its serial number.
4. Ensure the camera is powered on and has an active data plan for successful connection.

3.3. Physical Installation

The camera offers flexible mounting options to suit your monitoring needs.

1. **Tree Mounting:** Use the provided mounting strap to secure the camera to a tree. Ensure the solar panel is positioned to receive maximum sunlight.
2. **Separate Mounting:** The camera and solar panel can be installed separately using a mounting bracket (not

included) and connected via the provided 10ft cable. This allows for optimal solar panel placement even if the camera's position is shaded.



Image 3.2: Demonstrates two optional mounting methods for the trail camera.

4. OPERATING INSTRUCTIONS

4.1. Powering On/Off

Locate the power switch on the camera unit. Slide it to the 'ON' position to power on the camera. Slide it to 'OFF' to power it down.

4.2. Live View and Remote Access

Once connected to the Ucon app, you can access the camera's features remotely.

- Open the Ucon app and select your camera.
- Tap the 'Live View' option to stream 2K HD video in real-time.
- Use the app to adjust settings, capture photos/videos manually, and communicate via the two-way audio feature.

Real-time Alerts

PIR-activated sensor enable capture moving animals and send alert instantly

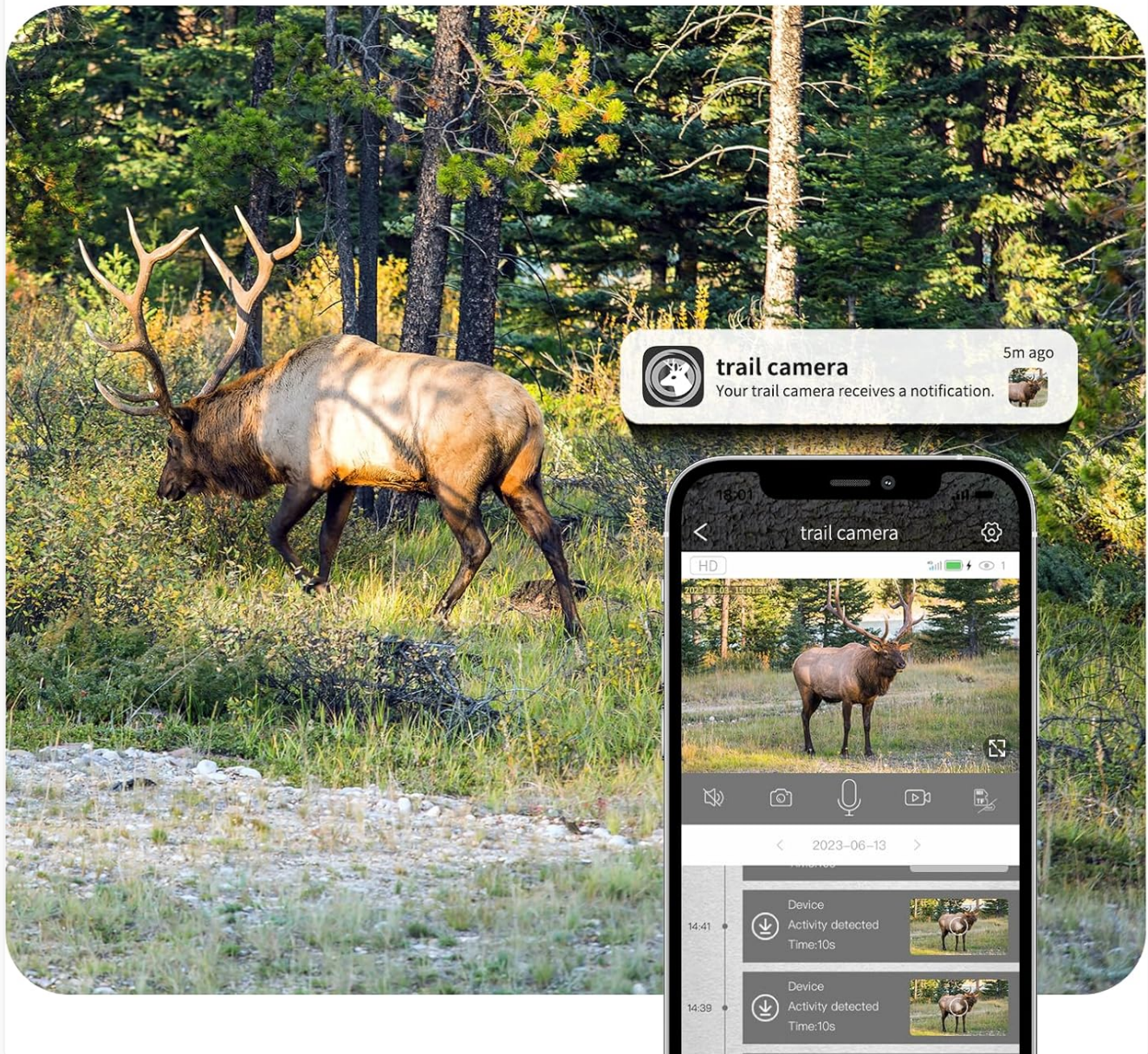


Image 4.1: Real-time alerts and live video feed on a smartphone from the trail camera.

4.3. Motion Detection and Trigger Speed

The camera features an adjustable PIR (Passive Infrared) sensor that detects motion and triggers recording.

- The camera boasts a rapid 0.2-second trigger speed to capture fast-moving subjects.
- Adjust PIR sensitivity in the Ucon app to optimize detection for your environment and reduce false triggers.
- Receive timely alerts on your smartphone when motion is detected.

0.2s Fast Trigger Speed

Capture Meaningful Moment



Image 4.2: Visual comparison of 0.2s fast trigger speed versus slower speeds.

4.4. Night Vision

The RBX-H10 is equipped with an advanced 850nm low-light infrared system for clear night vision.

- Provides a night vision range of up to 82 feet (25 meters).
- Offers a wide 120° field of view to capture activity across a broad area in low-light conditions.

4.5. Storage Management

Captured photos and videos can be stored locally or in the cloud.

- **Memory Card:** The camera supports a memory card (up to 128GB, not included) for local storage. Ensure a compatible card is inserted.
- **Cloud Storage:** A 30-day trial for cloud storage is available for new users. A subscription is required after the trial period.
- You can download or playback stored content directly from the Ucon app.



Image 4.3: Storage options including cloud and memory card for captured media.

5. MAINTENANCE

5.1. Solar Power System

The integrated solar panel is designed to provide continuous power, minimizing the need for manual charging.

- Ensure the solar panel is positioned in an area that receives direct sunlight for several hours daily.
- Regularly clean the surface of the solar panel to remove dirt, dust, or debris that may obstruct sunlight absorption.

Install Once, Use Forever

7800mAh + Solar Panel, never need you to repeatedly remove and charge



Image 5.1: The solar panel provides continuous power for extended operation.

5.2. Weather Resistance (IP66)

The camera has an IP66 waterproof rating, making it resistant to dust and powerful water jets. This ensures reliable performance in diverse outdoor environments.

- While designed for outdoor use, avoid submerging the camera in water.
- Periodically inspect the camera housing and seals for any signs of damage that could compromise its waterproof integrity.

IP66 Waterproof

Durable under the weather of sunny, rainy, snowy



Image 5.2: The camera's IP66 rating ensures durability in various weather conditions.

6. TROUBLESHOOTING

If you encounter issues with your SEHMUA RBX-H10 trail camera, refer to the following common solutions:

- **Camera Not Connecting/Offline:**

Ensure the camera is powered on and has an active data plan. Check the cellular signal strength in the camera's location via the Ucon app. If signal is weak, try repositioning the camera.

- **Poor Night Vision Quality:**

Verify that there are no obstructions in front of the camera's infrared sensors. Ensure the subject is within the 82-foot night vision range.

- **Battery Drains Quickly:**

Confirm the solar panel is clean and receiving adequate direct sunlight. Reduce the PIR sensor sensitivity or frequency of recordings in the app if the camera is in a high-activity area, as frequent triggers consume more power.

- **No Recordings on Memory Card:**

Ensure a compatible memory card (up to 128GB) is properly inserted. Check the camera settings in the Ucon app to confirm local storage is enabled and configured correctly.

• **Firmware Update Issues:**

If a firmware update fails or causes unexpected behavior, do not attempt further updates. Contact SEHMUA customer support immediately for assistance.

• **Physical Damage:**

For any physical damage, especially to the antenna or solar panel connector, contact customer support for potential replacement parts or service.

7. SPECIFICATIONS





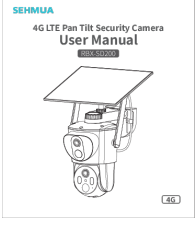

Feature	Specification
Model Number	RBX-H10
Connectivity	4G LTE Cellular Network (Verizon, T-Mobile, AT&T)
Video Resolution	2K HD
Trigger Speed	0.2 seconds
Night Vision Range	Up to 82 feet (25 meters)
Field of View	120°
Power Source	Integrated Solar Panel
Waterproof Rating	IP66
Memory Card Support	Up to 128GB (not included)
Compatible App	Ucon App (Smartphone)
Dimensions (L x W x H)	10 x 7 x 4 inches
Item Weight	5.84 pounds

8. WARRANTY AND SUPPORT

SEHMUA is committed to providing quality products and customer satisfaction. While specific warranty details are not provided in this manual, please retain your proof of purchase for any warranty claims. For technical assistance, troubleshooting not covered in this manual, or inquiries regarding replacement parts and warranty service, please contact SEHMUA customer support. Contact information can typically be found on the product packaging or the official SEHMUA website.



Related Documents - RBX-H10

	<p>SEHMUA RBX-H10 4G LTE Cellular Trail Camera User Manual</p> <p>Comprehensive user manual for the SEHMUA RBX-H10 4G LTE Cellular Trail Camera, covering setup, app functions, installation, troubleshooting, and compliance information.</p>
	<p>SEHMUA RBX-H10 4G LTE Cellular Trail Camera User Manual</p> <p>User manual for the SEHMUA RBX-H10 4G LTE Cellular Trail Camera, covering setup, app functions, installation, and troubleshooting for effective wildlife monitoring.</p>
	<p>SEHMUA RBX-H10 4G LTE Cellular Trail Camera User Manual</p> <p>Comprehensive user manual for the SEHMUA RBX-H10 4G LTE Cellular Trail Camera, covering setup, app functions, installation, troubleshooting, and compliance information.</p>
	<p>4G LTE Cellular Trail Camera RBX-H10 User Manual Setup, Features, and Troubleshooting</p> <p>Comprehensive user manual for the Sehmua RBX-H10 4G LTE Cellular Trail Camera. Learn about setup, app functions, installation, FAQs, and compliance.</p>
	<p>SEHMUA RBX-SD200 4G LTE Pan Tilt Security Camera User Manual</p> <p>User manual for the SEHMUA RBX-SD200 4G LTE Pan Tilt Security Camera. This guide provides instructions on setup, app functions, mounting, and troubleshooting for enhanced home security.</p>
	<p>SEHMUA RBX-SD200 4G LTE Pan Tilt Security Camera User Manual</p> <p>Comprehensive user manual for the SEHMUA RBX-SD200 4G LTE Pan Tilt Security Camera, covering setup, app functions, installation, troubleshooting, and compliance information.</p>