

MEDALight F1s

MEDALight F1s Mini Camera Flash Instruction Manual

Model: F1s

1. INTRODUCTION

The MEDALight F1s Mini Camera Flash is a compact and portable external flash unit designed to provide additional illumination for various digital and film cameras equipped with a single-contact hot shoe. Constructed from aviation-grade aluminum, it offers durability and efficient heat dissipation. This manual provides essential information for the proper setup, operation, and maintenance of your F1s flash unit.



Figure 1: MEDALight F1s Mini Camera Flash mounted on a camera, with its packaging and side view.

2. KEY FEATURES

- **Compact and Durable Design:** Made from aviation aluminum, weighing only 28g (1.3 x 1.3 x 0.78 inches), processed with CNC technology for precision and durability.
- **Simple Operation:** Features a single gear setting, making it user-friendly for beginners.
- **Rechargeable Battery:** Equipped with a built-in 128mAh lithium battery, rechargeable via a Type-C interface.
- **Universal Hot Shoe Mount:** Compatible with any camera featuring a single-contact hot shoe.
- **High-Speed Sync:** Supports a high-speed sync of 1/500s.
- **Optimal Color Temperature:** Approximately 6200K.

Made of aluminum

🔗 The flash housing is made of aluminum



Figure 2: The MEDALight F1s flash, emphasizing its aluminum construction and precision manufacturing.

3. PACKAGE CONTENTS

Upon opening the package, please verify that all items are present:

- MEDALight F1s Camera Flash
- Metal Box
- Gift Box
- Storage Pouch (for upgrade package)



Figure 3: Comparison of the old and upgraded package contents for the MEDALight F1s flash, showing the addition of a storage pouch in the new package.

4. SETUP

4.1 Charging the Flash

The F1s Mini Camera Flash is equipped with a built-in 128mAh lithium battery. Before initial use, ensure the flash is fully charged.

1. Locate the Type-C charging port on the side of the flash unit.
2. Connect a standard Type-C USB cable to the flash and a compatible USB power source.
3. The red indicator light will be continuously on during charging.
4. Charging typically takes approximately 1 to 1.5 hours. The red indicator light will turn off once fully charged.

High flash xenon light

Built-in 128mAh Lithium-ion Battery
It takes about 1-1.5 hours to fully charge



Figure 4: The MEDALight F1s flash connected to a Type-C charging cable, illustrating the charging process.

4.2 Mounting the Flash to Your Camera

The F1s flash features a universal hot shoe mount. Ensure your camera has a single-contact hot shoe for proper functionality.

1. Slide the hot shoe foot of the F1s flash into your camera's hot shoe slot.
2. Gently push until it is securely seated.
3. Do not force the flash if it does not slide in easily. Refer to the compatibility section if you encounter issues.

Please check whether your camera has single electrical contact before purchase

Not compatible with Sony ZV-1F and other cameras without universal hot shoe contacts

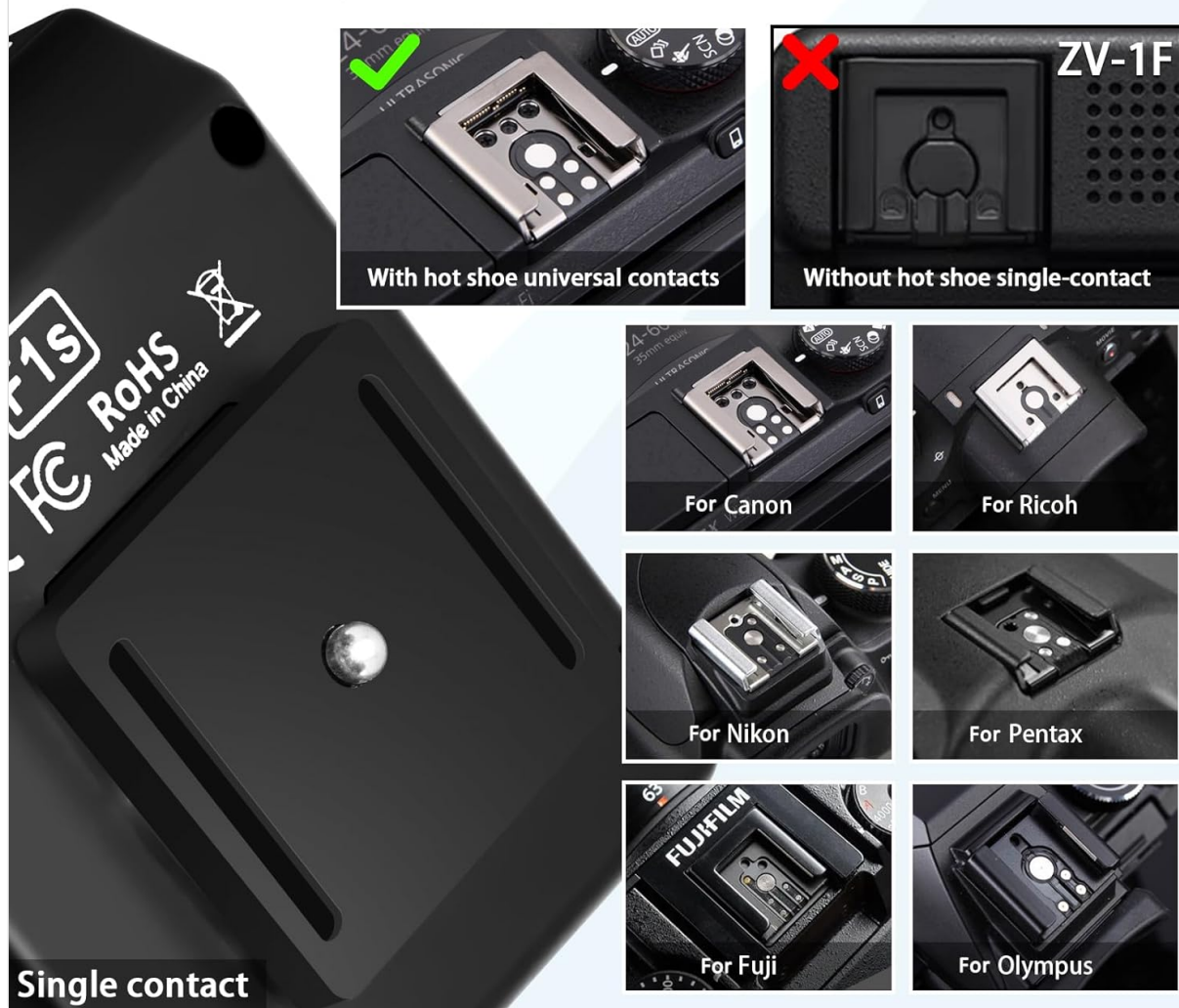


Figure 5: A visual guide demonstrating compatible single-contact hot shoe mounts for various camera brands and highlighting incompatibility with the Sony ZV-1F.

4.3 Camera Compatibility

The MEDALight F1s is designed for cameras with a **single-contact hot shoe**. Please review the compatibility list below before use. Incompatible cameras may not trigger the flash or could cause damage.

Important Note:

- NOT compatible with Sony ZV-1F.
- NOT compatible with Canon EOS Rebel SL3/250D, Rebel T7/1500D 2000D, Rebel T100/3000D/4000D/200DII.
- NOT compatible with cameras without a single-contact hot shoe.

Camera Compatibility List

Compatible with Sony :	A7III, A7IV, A7R5, A7RIII, A7RIV, A9, A7RII/V4.0,A7R, A6400,RX10,ZV-1,ZV-E10
Compatible with Canon :	5DIII,5DIV, 70D,80D,1DX,850D,760D,5DII,7DII,6DII, 6D,800D,90D,600D,7D,M5, M3,EOS RP, EOS R, R5,60D
Compatible with Nikon :	D800,D780,D5,D4,D500,D610,D750,D700,D300S,D3300,D3100, D5300,D5200,D5000,Z7II,Z6.Z8,ZFC,D200,D60,D5100,D7500,D7100
Compatible with Fuji :	X-Pro2,X-T20,X-T2,X-T1,GFX50S,GFX50R,X-T30,X-T4,X-T3,X-Pro1, X-T10,X-E1,X-T5,X-M5
Compatible with Panasonic :	GH4,LX100,GF1,G85,Panasonic, Gx85,FZ2500GX,S1R,GH5,G7
Compatible with Leica :	SL1,M10,Q2,TYP601,CL, SL2
Compatible with olympus :	E-M1, PRN-F,E-M10II, E-M10III, E-PL8,E-P5,E-M5I
Compatible with Pentax :	K-3II,645Z,KP,K-70,K-S2,K-1,K50
Note:	Please check Camera Compatibility before purchasing
Not compatible	Not compatible with Sony ZV1-F, A9III, A99,A77,A350,2v1 Mark 2; Not compatible with Canon 3000D,1500D,200DII, R50 ; Not compatible with Fuji X-A3,X100F,X100T

Figure 6: A comprehensive table detailing compatible and incompatible camera models for the MEDALight F1s flash across various brands.

5. OPERATING INSTRUCTIONS

5.1 Basic Operation

The F1s flash is designed for straightforward use with a single gear setting.

1. **Power On/Off:** Long press the power button (located near the Type-C port) to turn the flash on or off.
2. **Flash Test:** Short press the power button to perform a test flash.
3. **Ready Indicator:** A green light indicates the flash is ready to fire.
4. **Automatic Firing:** Once mounted and powered on, the flash will automatically fire when your camera's shutter is released.

It is recommended to use this F1s camera flash within a range of 4 meters for optimal results.

Function introduction

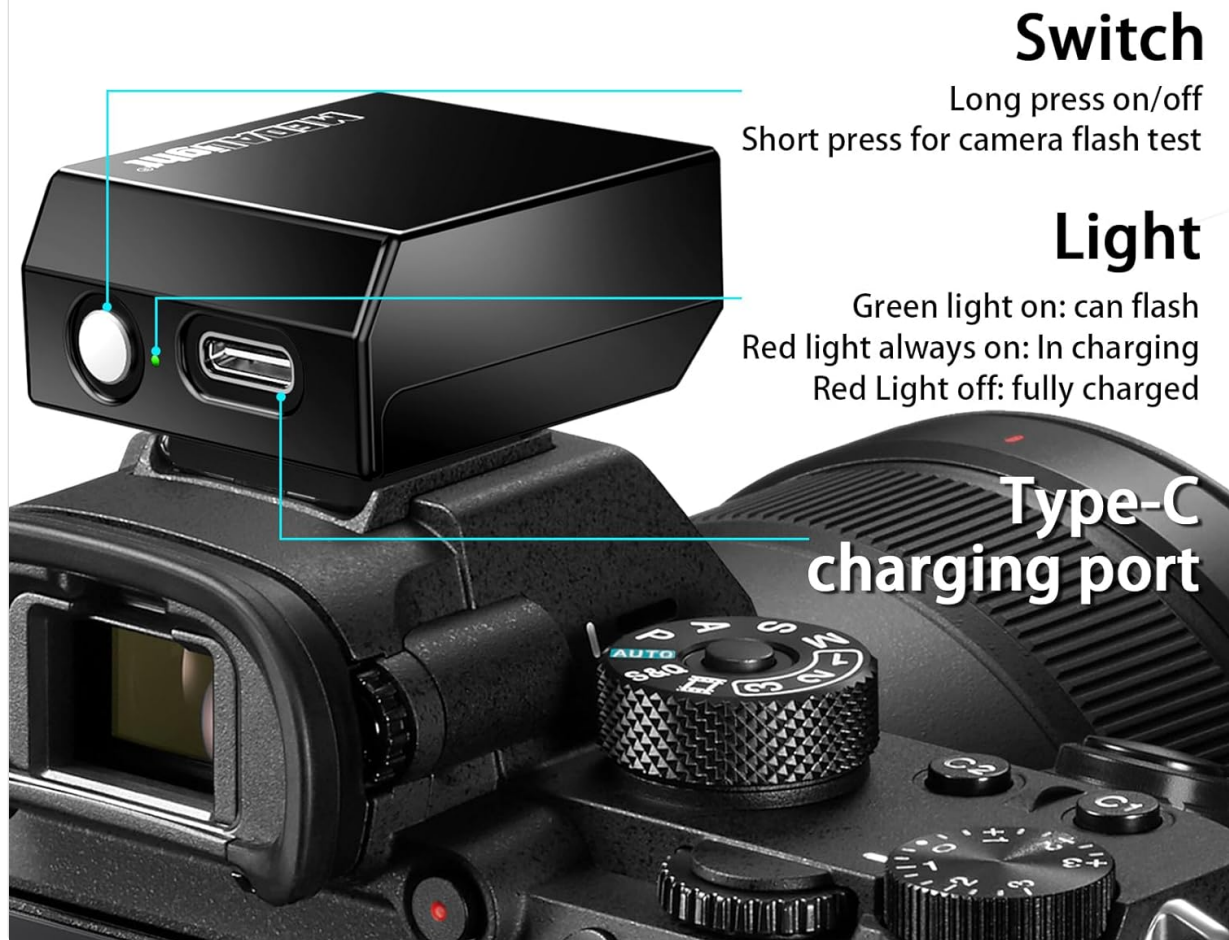


Figure 7: An overview of the F1s flash's functions, including the power switch, indicator light, and Type-C charging port.

6. MAINTENANCE

To ensure the longevity and optimal performance of your MEDALight F1s Mini Camera Flash, follow these maintenance guidelines:

- **Cleaning:** Use a soft, dry cloth to clean the exterior of the flash. Avoid using harsh chemicals or abrasive materials.
- **Storage:** When not in use, store the flash in its protective metal box or storage pouch in a cool, dry place, away from direct sunlight and extreme temperatures.
- **Battery Care:** Recharge the battery regularly, even if not frequently used, to maintain battery health. Avoid fully discharging the battery for extended periods.
- **Handling:** Handle the flash with care to prevent drops or impacts, despite its durable aluminum construction.

7. TROUBLESHOOTING

7.1 Flash Not Firing

- **Check Battery:** Ensure the flash is adequately charged. The red indicator light should be off, and the green light should be on when ready.
- **Power On:** Confirm the flash is powered on (long press the power button).
- **Hot Shoe Connection:** Verify the flash is securely seated in the camera's hot shoe.
- **Camera Compatibility:** Double-check if your camera model is listed as compatible in Section 4.3. The flash requires a single-contact hot shoe.

7.2 Shadows in Photos

If you observe shadows in your photos, particularly at the bottom or sides, this is often due to the flash's position relative to the lens.

- **Lens Size:** Larger lenses or lens hoods can obstruct the flash's light path, casting shadows.
- **Recommendation:** For best results, pair the F1s flash with pancake lenses or other compact lenses that do not extend significantly beyond the camera body.

Influence of the camera lens

! Noted: Best paired with pancake lenses or compact lenses. Using with Larger lenses or lens hoods may cause shadows due to the flash's position

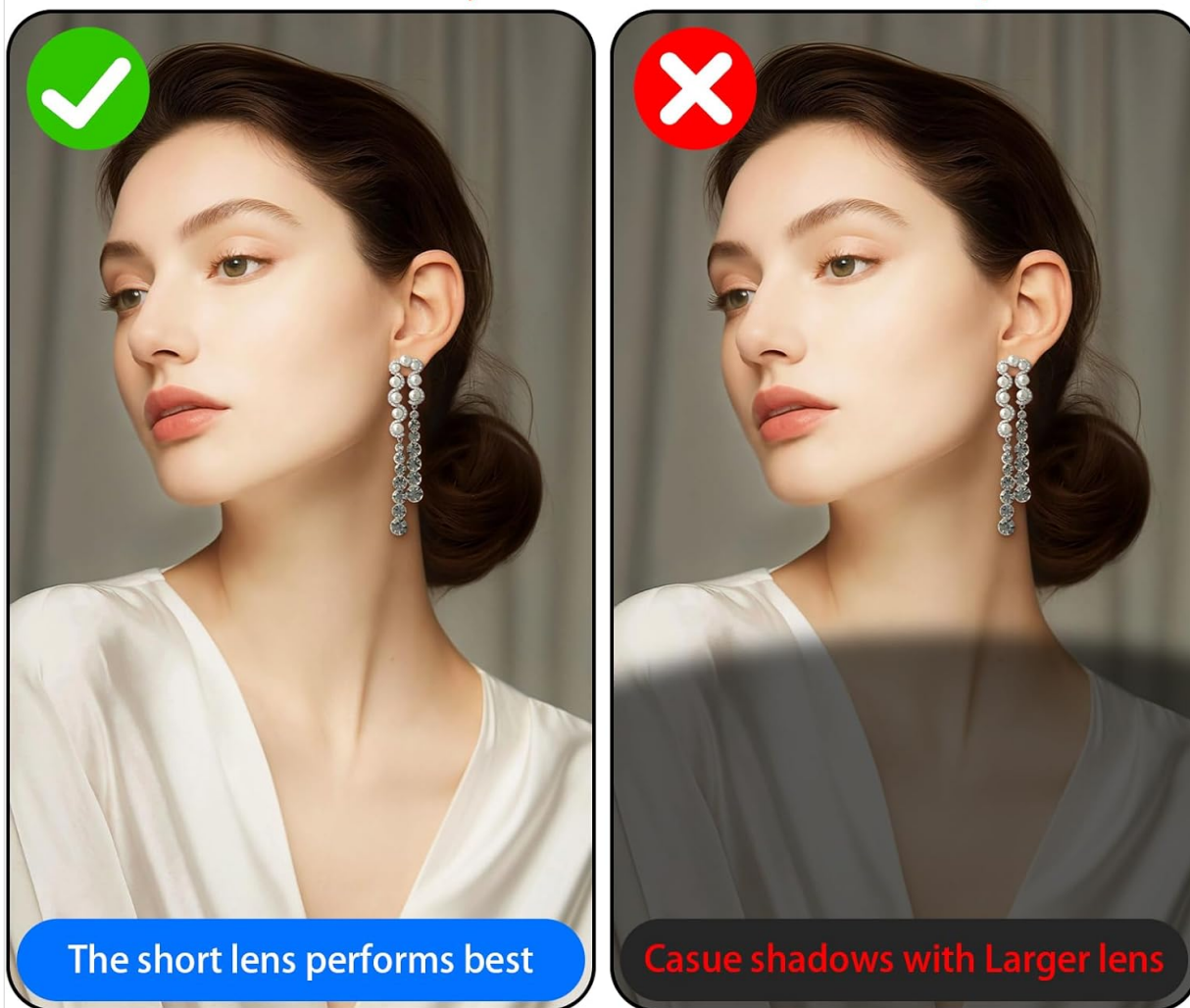


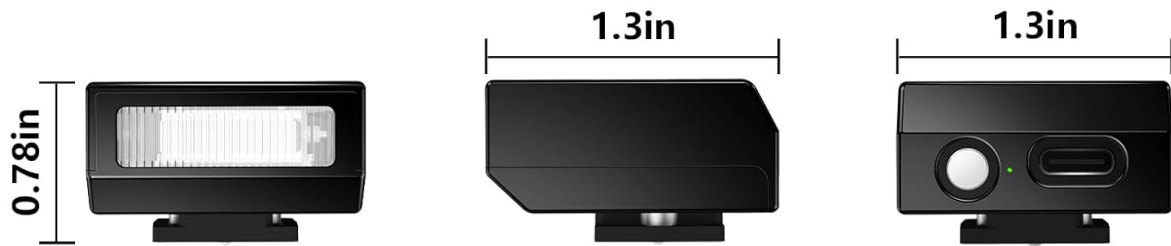
Figure 8: An illustration demonstrating how larger lenses can cause shadows when using the F1s flash, compared to optimal results with shorter lenses.

8. SPECIFICATIONS

Feature	Detail
Product Model	F1s
Guide Number (GN)	GN5 (ISO100)
Lithium Battery	3.7V/128mAh
Color Temperature	6200 ± 400K
Charging Time	Approximately 1 to 1.5 hours
Input Voltage	5V/500-2000mA
Dimensions (L x W x H)	0.78 x 1.3 x 1.3 inches (20 x 33 x 33 mm)
Weight	28g (0.99 oz)
Flash Sync Speed	1/500s
Compatible Mountings	Cameras with single-contact hot shoe (e.g., Ricoh GR3, Sony ZV1/ZVE10, Fuji, Olympus, Nikon, Canon)

Detailed parameters of F1S

! Noted: Best paired with pancake lenses or compact lenses. Using with Larger lenses or lens hoods may cause shadows due to the flash's position



Product model	F1S	GN/ISO	GN5 / ISO100
Lithium battery	3.7V/128mA	Color temperature	6200±400k
Charging time	About 1 to 1.5 hours	Volume	0.78×1.3×1.3in
Input voltage	5V/500-2000mA	Weight	28g
Compatible cameras	Suitable for cameras with hot - shoe contacts		






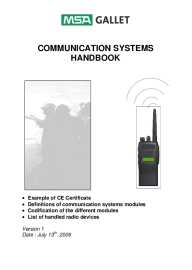
Figure 9: A visual representation of the detailed technical specifications for the F1s mini camera flash.

9. WARRANTY AND SUPPORT

For warranty information and customer support, please refer to the documentation provided with your purchase or contact MEDALight directly through their official channels. MEDALight is a company specializing in flash lights and photography equipment accessories.

Manufacturer: Zhuhai jingjia technology co.,ltd

Related Documents - F1s

	<p>Marantz PA02/F1S Monitor Amplifier Service Manual</p> <p>Service manual for the Marantz PA02/F1S Monitor Amplifier, providing technical specifications, operation tests, alignments, block diagrams, schematic diagrams, parts location, exploded views, and electrical parts lists.</p>
	<p>Veho Kuzo Smart Watch VSW-001-F1S-B/VSW-002-F1S-W: User Guide & Features</p> <p>Official user manual for the Veho Kuzo VSW-001-F1S-B and VSW-002-F1S-W smartwatches. Learn setup, usage, specifications, and access support resources in multiple languages.</p>
	<p>Samsung Trade Up: Device Trade-in Values and Program Details</p> <p>Find trade-in values for popular Samsung, Apple, Huawei, LG, and Sony mobile phones as part of the Samsung Trade Up program. Learn about the program details and eligibility.</p>
	<p>Purmo Aquilo Trench Convector Technical Catalogue</p> <p>Explore the Purmo Aquilo trench convectors with this comprehensive technical catalogue. Discover detailed specifications, dimensions, and heat output data for various models including Aquilo FMS, F1S, F2C, F2V, F4C, and F4V.</p>
	<p>Bosch FLEXIDOME IP panoramic 7000 MP Camera: Comprehensive Surveillance Solution</p> <p>Discover the Bosch FLEXIDOME IP panoramic 7000 MP camera, offering 12MP resolution, 360°/180° coverage, advanced dewarping, and Intelligent Video Analysis for superior situational awareness and security.</p>
	<p>MSA GALLET Communication Systems Handbook</p> <p>This handbook provides comprehensive information on MSA GALLET communication systems, including CE certificates, module definitions, codification, and a list of compatible radio devices. It details headset components, PTT modules, connection plugs, and installation procedures for various helmet models.</p>



[B&H Photo Video Pro Audio Catalog - Winter 2013](#)

Explore the Winter 2013 catalog from B&H Photo Video Pro Audio, featuring a comprehensive selection of photography, video, pro audio, computer, and home entertainment equipment. Discover the latest products and expert solutions from B&H.

lang:en score:17 filesize: 30.56 M page_count: 456 document date: 2012-10-26