

hohem iSteady M7

hohem iSteady M7 Gimbal Stabilizer User Manual

Model: iSteady M7

Brand: hohem

INTRODUCTION

The hohem iSteady M7 is an advanced 3-axis gimbal stabilizer designed for smartphones, offering superior stabilization, AI tracking capabilities, and a detachable touchscreen remote for enhanced control. This manual provides comprehensive instructions for setting up, operating, and maintaining your iSteady M7 to ensure optimal performance for all your video recording needs.

WHAT'S IN THE BOX

- iSteady M7 Gimbal x1
- Advanced AI Tracker with Fill Light x1
- Detachable Touchscreen Remote Controller x1
- Tripod x1
- Carrying Case x1
- USB-Type C Charging Cable x1
- Type C-Type C Charging Cable x1
- Quick Start Guide x1
- Warranty Card x1
- Safety Guidelines x1



Image: All components included in the hohem iSteady M7 package, neatly arranged.

Key Features

Detachable Touchscreen Controller

The hohem iSteady M7 gimbal features a detachable 1.4-inch touchscreen controller, enabling remote control of your shots from up to 10 meters away. It provides real-time previews and automatic tracking of subjects, ideal for capturing footage from a distance with complete control and stability.

Remote Control, Real-Time Creativity

33 ft



Detachable remote with 1.4" full color touchscreen for real-time preview and customized composition

Image: The detachable remote control with its 1.4-inch full-color touchscreen, displaying a real-time preview of the camera's view.

Magnetic AI Tracker with Fill Light

This phone gimbal includes a magnetic AI tracker with 100% enhanced AI resolution for precise subject tracking. It ensures your smartphone camera follows the action without losing track. The integrated 360 RGB lighting offers CCT and RGB modes, allowing remote adjustment of light intensity and color for various shooting conditions.

Advanced AI Tracking

AI Tracker gesture recognition distance: 1.64-16.4 ft

Tracking distance: 1.64-22.97 ft



AI Face
Tracking



AI Object
Tracking



Image: The gimbal actively tracking a subject using its advanced AI tracking feature, indicated by a green frame around the person's face.

Capture Everyone in the Frame



Image: The integrated 360 RGB fill light on the gimbal, showcasing its ability to produce a wide range of colors for diverse lighting needs.

iSteady 9.0 Anti-Shake Technology

Equipped with iSteady 9.0 anti-shake technology, the 3-axis stabilization system provides 360° rotation for crystal-clear footage, even during movement. This ensures smooth, professional-quality video regardless of the environment or action.

iSteady 9.0 Anti-Shake Technology



Image: A visual comparison highlighting the effectiveness of iSteady 9.0 Anti-Shake Technology, showing a clear difference between unstabilized and stabilized video footage.

12-Hour Battery Life & Reverse Charging

The iSteady M7 offers up to 12 hours of battery life for extended shooting. Its reverse charging feature allows you to charge your smartphone directly from the gimbal, ensuring power for long video sessions or outdoor shoots.

Light Your World in 360 Colors



Image: The gimbal connected to a smartphone, demonstrating its reverse charging function and highlighting its long battery life.

Extendable Aluminum Rod

A built-in extendable aluminum rod stretches up to 7.6 inches (193mm), allowing for wide shots, low angles, and high perspectives. This feature expands creative possibilities for various videography scenarios.

Steady Shots in Every Adventure



Image: The gimbal with its extendable aluminum rod fully extended, positioned to capture a group of people at a table, illustrating its ability to achieve dynamic perspectives.

1.1lbs Payload & Accessory Compatibility

With a 1.1lbs payload capacity, the iSteady M7 supports external lenses, microphones, and cooling fans, offering flexibility to expand your gear setup for professional shoots.

Universal Smartphone Compatibility

The gimbal is compatible with 95% of smartphones, fitting devices from 2.28" to 3.54" with upgraded motor torque to support larger and heavier devices.

Universal Smartphone Compatibility

Support Foldable Phones



*Compatible with foldable phones such as VIVO X FOLD 3, Huawei MATE X5, OPPO FIND N3, Xiaomi MIX FOLD 4, etc.

Image: The gimbal shown with a range of smartphones, including foldable models, highlighting its broad compatibility.

SETUP GUIDE

Mounting and Balancing Your Smartphone

To ensure stable footage and maximize the gimbal's performance, proper balancing is required before use. Failure to adjust the balance may result in reduced stability, shorter battery life, and, in cases of severe imbalance, overheating of the

motors, leading to a sleep protection mode.

The iSteady M7 is compatible with smartphones up to 7 inches (weight \leq 500g, width: 58mm - 90mm, thickness \leq 12.5mm).

Mounting in Landscape Orientation:

1. Attach your smartphone to the phone clamp.
2. Ensure the camera of your smartphone is positioned on the left side.
3. Verify that the smartphone is tightly pressed against both the phone clamp and the motor pad.

Balancing in Landscape Orientation:

1. Unlock the roll arm latch.
2. Push the arm to the left or right until the phone is level with the ground.
3. Tighten the latch to secure the position.

Mounting in Portrait Orientation:

1. Rotate the phone clamp by 90° to the left.
2. Attach your mobile phone with the camera positioned on the top.
3. Ensure the back of the smartphone is tightly pressed against the phone clamp.

Balancing in Portrait Orientation:

1. Unlock the roll arm latch.
2. Push the arm to the left or right until the phone is level with the ground.
3. Tighten the latch to secure the position.



Video: Official hohem iSteady M7 Gimbal - Mounting & Balancing tutorial. This video demonstrates the correct procedures for attaching and balancing your smartphone in both landscape and portrait orientations on the gimbal.

OPERATING INSTRUCTIONS

Usage Modes

The iSteady M7 offers versatile usage modes to suit different shooting scenarios:

- **Handheld Mode:** Simply hold the gimbal for on-the-go shooting.
- **Extended Mode:** Pull out the built-in extension pole to achieve unique gimbal moves at high or low angles.
- **Remote Mode:** Use the detachable touchscreen remote to control shooting and enable real-time preview of AI tracking footage from a distance.



Video: Official hohem iSteady M7 Gimbal - Usage Modes & Indicators. This video illustrates the different ways to hold and use the gimbal, including handheld, extended, and remote control modes.

Touchscreen Interface

The 1.4-inch touchscreen provides intuitive control and real-time information:

- **Status Bar:** Displays gimbal battery level, Bluetooth connection status, AI tracking status, remote connection status, and remote battery level.
- **Roller Control:** Adjust focus, pan, CCT, and RGB settings.
- **Motor Balance:** View real-time output torque status of the three motor axes (Green: Good balance, Yellow: Slight

imbalance, Red: Poor balance, requiring re-adjustment).

- **Working Mode:** Switch between PF Mode, PTF Mode, POV Mode, and Custom Mode.
- **Scenario:** Choose from shooting modes like Auto Rotation, Ultra-Wide Angle, Panoramic Shooting, and Timelapse.
- **Joystick Settings:** Adjust speed and direction of tilt and pan axes.
- **A/B Setting:** Set A/B points and duration for trajectory rotation.
- **Follow Speed:** Set the motor's follow speed to Slow, Medium, or Fast.
- **More Settings:** Access language settings, gimbal sound prompt, motor strength, and level calibration.



Video: Official hohem iSteady M7 Gimbal - Touchscreen Interface. This video provides a detailed walkthrough of the gimbal's touchscreen menu, explaining each setting and function.

MAINTENANCE

Proper maintenance ensures the longevity and optimal performance of your hohem iSteady M7 gimbal:

- Keep the gimbal clean by wiping it with a soft, dry cloth after each use.
- Store the gimbal in its provided carrying case when not in use to protect it from dust and physical damage.
- Avoid exposing the gimbal to extreme temperatures or direct sunlight for prolonged periods.
- Ensure all latches and locks are properly secured when transporting the gimbal to prevent motor damage.
- Regularly check for any loose parts or unusual sounds during operation.

TROUBLESHOOTING

If you encounter issues with your iSteady M7, consider the following common solutions:

- **Gimbal is Shaky or Unstable:** Ensure your smartphone is correctly mounted and balanced. Refer to the "Mounting and Balancing Your Smartphone" section.
- **Motors Overheating:** This often indicates poor balancing. Re-balance your smartphone on the gimbal.
- **Bluetooth Connection Issues:** Ensure Bluetooth is enabled on your smartphone and the gimbal. Try restarting both devices.
- **Remote Control Not Responding:** Check the remote's battery level and ensure it is properly connected to the gimbal.
- **AI Tracking Not Working:** Verify that the AI tracker is clean and unobstructed. Ensure sufficient lighting for optimal performance.
- **Unexpected Behavior:** Perform a factory reset if available through the touchscreen menu, or refer to the comprehensive User Manual (PDF) for detailed troubleshooting steps.

SPECIFICATIONS

Feature	Detail
Product Dimensions	12.87 x 4.81 x 4.66 inches
Item Weight	1.39 pounds
Item Model Number	iSteady M7
Batteries	1 Lithium Ion batteries required (included)
Manufacturer	hohem
Country of Origin	China
Color	Black
Maximum Weight Recommendation	1.1 Pounds
Folded Size	13.22 x 2.24 x 6.26 inches
Smartphone Compatibility	Fits devices from 2.28" to 3.54" width, thickness ≤ 12.5mm

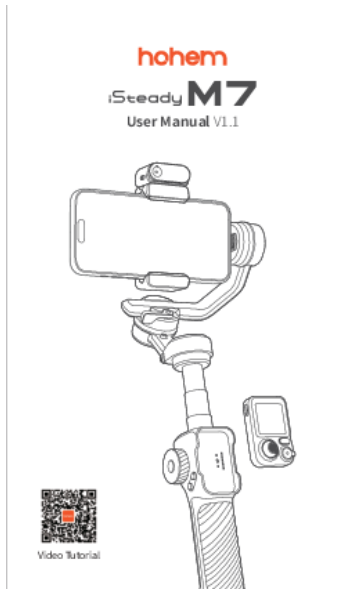
WARRANTY AND SUPPORT

Your hohem iSteady M7 Gimbal Stabilizer comes with a Warranty Card included in the box. Please refer to this card for detailed warranty terms and conditions.

For further assistance, technical support, or to download the full user manual in PDF format, please visit the official hohem website or refer to the provided User Manual (PDF) document:

[Download User Manual \(PDF\)](#)

For direct support, you may contact "hohem Direct", the seller of this product.



[Hohem iSteady M7 User Manual: Features, Operation, and Specifications](#)

Comprehensive user manual for the Hohem iSteady M7 smartphone gimbal stabilizer. Learn about its features, including AI tracking, detachable touchscreen remote, various shooting modes, charging, and specifications.

lang:en score:42 filesize: 4.18 M page_count: 20 document date: 2025-03-13



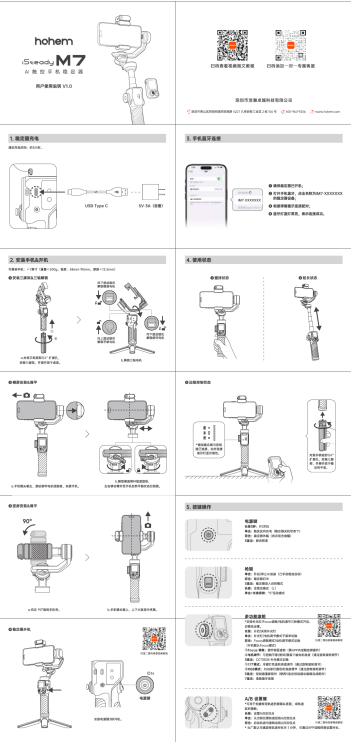
[\[pdf\] User Manual](#)

Podręcznik użytkownika ver 1 0 iSteady M7 User Manual PL flystore pl p file

2c39efdc6a9eedff9d2e772eae200507 |||

Podręcznik użytkownika ver. 1.0 Samouczek wideo Spis treści 01 Zawarto opakowania 01 02 Elementy stabilizatora 32 15 Specyfikacja 33 16 Centrum obsługi klienta numer bezpłatny 36 01 Zawarto opakowania iSteady M7 Zaawansowany moduł sterowania za pomocą sztucznej inteligencji z lampą Odczany pilot z ekranem...

lang:pl score:40 filesize: 5.22 M page_count: 40 document date: 2024-12-08



[Hohem iSteady M7 AI Tracking Smartphone Gimbal User Manual and Safety Guidelines](#)

Comprehensive user manual and safety guidelines for the Hohem iSteady M7 AI Tracking Smartphone Gimbal, covering setup, operation, features, safety warnings, and technical specifications.

lang:en score:37 filesize: 3.46 M page_count: 30 document date: 2024-12-10



[Hohem iSteady M7 User Manual: Features, Operation, and Specifications](#)

Comprehensive user manual for the Hohem iSteady M7 smartphone gimbal stabilizer. Learn about its features, modes, AI tracking, remote control, app integration, and technical specifications.

lang:en score:36 filesize: 4.16 M page_count: 20 document date: 2024-12-20

