

## BEAUTY CASE DX 12

# BEAUTY CASE DX 12 Makeup Bag with LED Mirror User Manual

Model: DX 12

## 1. INTRODUCTION

---

Thank you for choosing the BEAUTY CASE DX 12 Makeup Bag with LED Mirror. This portable cosmetic organizer is designed for convenience and functionality, featuring an integrated LED mirror, customizable storage, and durable construction. This manual provides essential information for the proper setup, operation, and maintenance of your device.

### What's Included:

- 1 x BEAUTY CASE DX 12 Makeup Bag with LED Mirror
- 2 x Brush Storage Holders
- 1 x USB-C Charging Cable
- 1 x Instructional Guide Manual (this document)

## 2. SAFETY INFORMATION

---

- Do not expose the device to extreme temperatures or direct sunlight for extended periods.
- Keep the device away from water and other liquids to prevent electrical hazards.
- Use only the provided USB-C cable for charging.
- Do not attempt to disassemble or repair the device yourself. Contact customer support for assistance.
- Keep out of reach of children.

## 3. SETUP

---

### 3.1 Unpacking

Carefully remove all components from the packaging. Inspect the makeup bag and accessories for any signs of damage. Retain the packaging for future storage or transport.

### 3.2 Initial Charging

Before first use, fully charge the integrated LED mirror battery. Connect the provided USB-C cable to the charging port on the makeup bag and plug the other end into a compatible USB power adapter (not included).

The charging indicator light will illuminate during charging and turn off or change color when fully charged. A full charge provides approximately 30 hours of illumination.



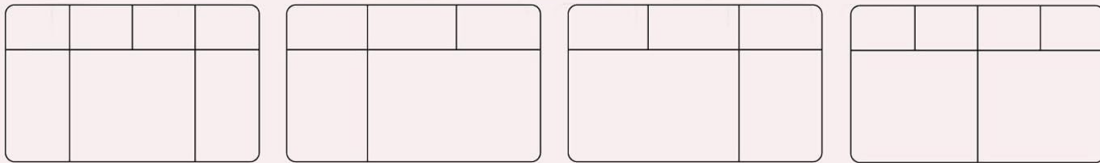
**Figure 3.2.1:** USB-C Charging Port. The image displays the makeup bag with an arrow pointing to the USB-C charging port, indicating where to connect the charging cable. A battery icon and 'USB charging' text are also visible, illustrating the charging function.

### 3.3 Adjusting Dividers

The makeup bag features customizable compartments. The internal dividers can be rearranged to suit your storage needs. Gently lift and reposition the dividers to create sections of various sizes for your cosmetics and tools.

# Adjustable Dividers

DIY Your Personal Cosmetic Space According to Your Needs



**Figure 3.3.1:** Adjustable Dividers. This image illustrates a hand adjusting the internal dividers within the makeup bag's main compartment, demonstrating how to customize the storage space. Various divider configurations are shown below.

## 4. OPERATING INSTRUCTIONS

### 4.1 Using the LED Mirror

The integrated LED mirror offers three adjustable light modes and brightness control.

- **Power On/Off:** Press and hold the touch switch located on the mirror surface to turn the LED lights on or off.
- **Change Light Mode:** With the lights on, tap the touch switch to cycle through the three light modes: Cool, Natural, and Warm.
- **Adjust Brightness:** With the lights on, press and hold the touch switch to adjust the brightness level from 0% to 100%. Release when the desired brightness is achieved.

## 3 Mode Light Colors & Adjustable Brightness



**Figure 4.1.1: LED Mirror Functions.** This image displays the LED mirror with examples of Cool, Natural, and Warm light modes. It also shows how to long-press the touch switch to adjust brightness and highlights the touch switch location.

### 4.2 Organizing Contents

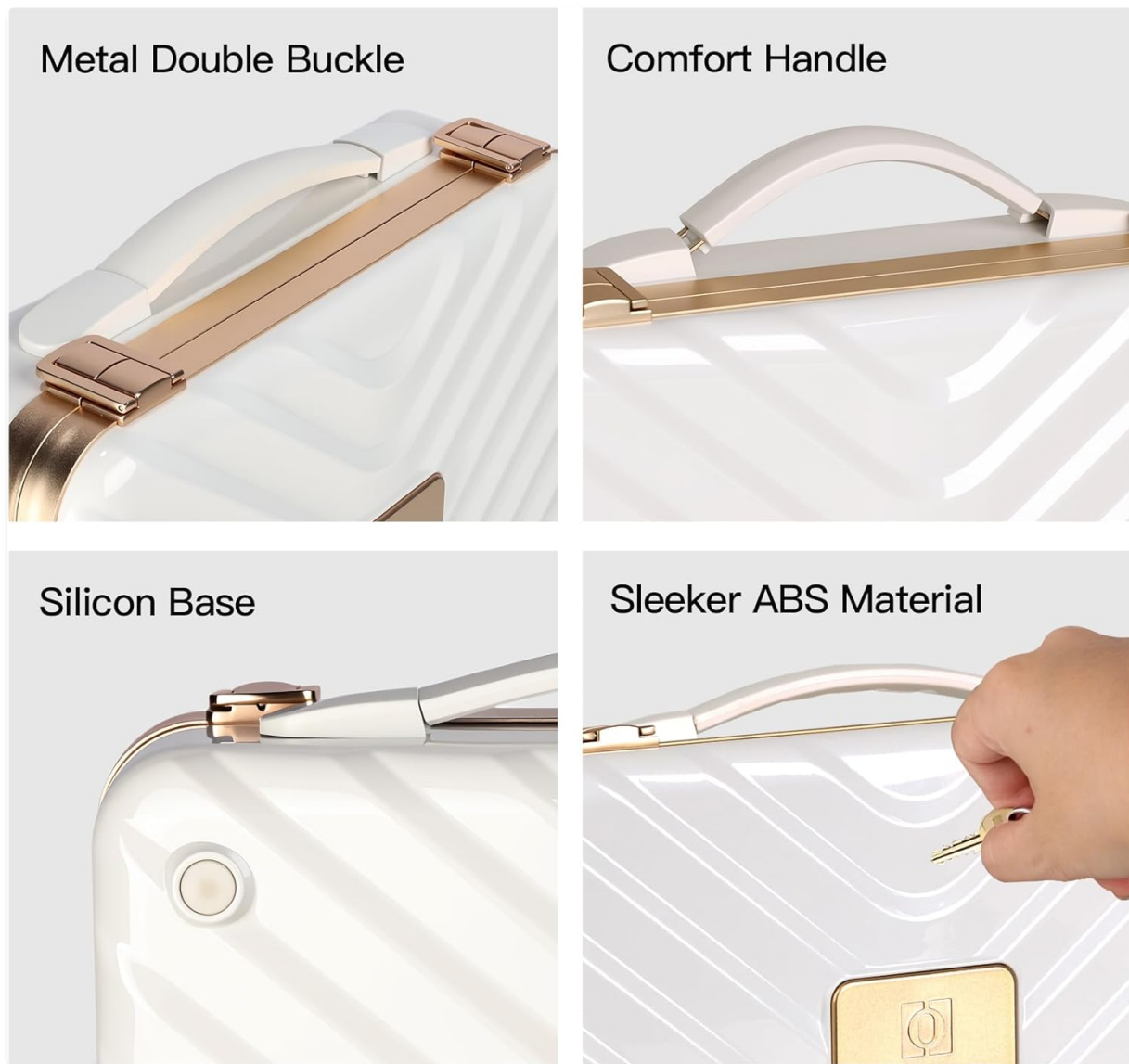
Utilize the main compartment with adjustable dividers for larger items like foundation, palettes, and skincare. The two brush storage holders can be used to keep brushes organized and protected. The hinge mechanism allows the mirror to be securely angled for optimal use.



**Figure 4.2.1:** Organized Interior. The image shows the makeup bag fully open, revealing the LED mirror, organized compartments with various cosmetics, and brush holders on the side flaps.

### **4.3 Transport and Portability**

The makeup bag is designed for portability. Ensure the snap buckles are securely fastened before carrying. The sturdy handle provides a comfortable grip. The four plastic legs on the base offer stability when placed on surfaces.



**Figure 4.3.1:** Design Features. This composite image highlights key design elements: the metal double buckle for secure closure, the comfort handle for easy carrying, the silicon base for stability, and the sleek ABS material of the case.

## 5. MAINTENANCE

---

### 5.1 Cleaning

To clean the exterior, wipe with a soft, damp cloth. Avoid abrasive cleaners or solvents. For the mirror surface, use a soft, lint-free cloth specifically designed for electronics or mirrors. Do not spray cleaning solutions directly onto the mirror.

### 5.2 Battery Care

To prolong battery life, avoid fully discharging the battery frequently. Recharge the battery when the LED lights dim or stop functioning. If storing the device for an extended period, charge the battery to approximately 50% every few months.

### 5.3 Storage

Store the makeup bag in a cool, dry place away from direct sunlight and extreme temperatures. Ensure the bag is closed and latched to protect its contents.

## 6. TROUBLESHOOTING

---

- **LED Mirror Not Turning On:** Ensure the battery is charged. Connect the USB-C cable and charge for at least 30 minutes before attempting to power on again.
- **Lights Dim or Flickering:** This indicates a low battery. Recharge the device.
- **Charging Not Working:** Check the USB-C cable for damage and ensure it is securely connected to both the makeup bag and the power source. Try a different USB power adapter if available.
- **Dividers Not Staying in Place:** Ensure the dividers are correctly inserted into the grooves. Apply gentle pressure to secure them.

If you encounter issues not listed here, please contact customer support.

## 7. SPECIFICATIONS

|                               |  |
|-------------------------------|--|
| <b>Model</b>                  | DX 12  |
| <b>Material</b>               | ABS Shell, Aluminum Frame                            |
| <b>Color</b>                  | White  |
| <b>Weight</b>                 | 2 kg   |
| <b>Dimensions (L x W x H)</b> | 29 cm x 9 cm x 22 cm (approx. 11.6" x 4" x 9.1")     |
| <b>Mirror Type</b>            | Touch Mirror with LED light                          |
| <b>LED Modes</b>              | Natural, Cool, Warm Lights                           |
| <b>Battery Capacity</b>       | 6000mAh  |
| <b>Battery Duration</b>       | Up to 30 hours                                       |
| <b>Charging Port</b>          | USB-C  |
| <b>Storage</b>                | Single Tier Brush Storage with Multiple Compartments |
| <b>Features</b>               | Hinge Mechanism, Snap Buckle, 4 Plastic Legs         |

# Large Capacity with Perfect Size



**Figure 7.1.1: Product Dimensions and Capacity.** This image provides a visual representation of the makeup bag's dimensions (length, width, height) and illustrates its capacity by showing various cosmetic items neatly stored inside.

## 8. WARRANTY AND SUPPORT

The BEAUTY CASE DX 12 Makeup Bag with LED Mirror comes with a standard manufacturer's warranty. Please refer to the product packaging or contact your retailer for specific warranty terms and conditions.

For technical support, troubleshooting assistance, or warranty claims, please contact BEAUTY CASE customer service through the retailer's platform or the official brand website.