

Qolsys QC0008-840



Qolsys IQ Card-PG User Manual

For IQ Panel 4, IQ4 Hub, or IQ4 NS

1. INTRODUCTION

The Qolsys IQ Card-PG is an essential component designed to enhance the capabilities of your existing Qolsys security system. This module unlocks the full potential of PowerG security sensors, providing advanced wireless communication and encryption for superior home or business security. It is specifically compatible with IQ Panel 4, IQ4 Hub, and IQ4 NS control panels.

By integrating the IQ Card-PG, users can benefit from PowerG technology's extended communication range and robust security features, ensuring comprehensive and reliable monitoring across their property.

2. PRODUCT OVERVIEW

The IQ Card-PG is a compact circuit board designed for easy integration into compatible Qolsys control panels. Its primary function is to enable PowerG wireless communication, known for its reliability and security.

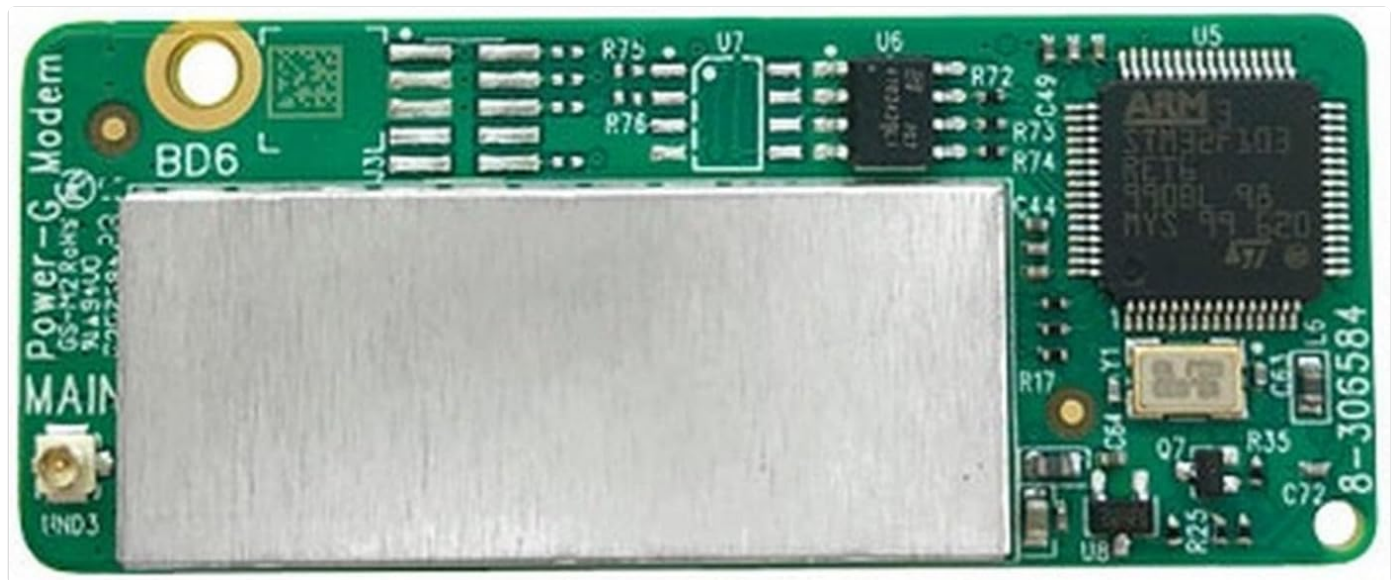


Figure 2.1: The Qolsys IQ Card-PG module. This image displays the green circuit board with a prominent silver metallic shield covering a significant portion of its surface. Various small electronic components and circuit traces are visible around the shield, along with text markings such as "Power-G Modem" and "MAIN".

Key Features:

- **PowerG Technology Integration:** Unlocks the use of PowerG security sensors.
- **Extended Communication Range:** Provides a more reliable connection throughout your property.

- **Encrypted Communication:** Ensures secure data transmission between sensors and the control panel.
- **Compatibility:** Designed for seamless integration with IQ Panel 4, IQ4 Hub, and IQ4 NS control panels.
- **Simple Installation:** Easily installs into a designated slot within the control panel.

3. SETUP AND INSTALLATION

Installation of the Qolsys IQ Card-PG is a straightforward process. It is designed to be inserted into a specific slot within your compatible Qolsys control panel.

Compatibility:

Ensure your control panel is one of the following models:

- IQ Panel 4
- IQ4 Hub
- IQ4 NS

Installation Steps:

1. **Power Down:** Before beginning, ensure your Qolsys control panel is completely powered off and disconnected from its power source. This prevents electrical shock and potential damage to the device.
2. **Locate Slot:** Refer to your specific Qolsys control panel's manual to locate the designated expansion slot for the PowerG module. This slot is typically accessible by removing a cover or panel.
3. **Insert Card:** Carefully align the IQ Card-PG with the expansion slot. Gently push the card into the slot until it is fully seated. Do not force the card.
4. **Secure (if applicable):** Some panels may have a securing mechanism (e.g., a screw or clip) to hold the card in place. Ensure it is properly secured.
5. **Reassemble:** Replace any covers or panels that were removed during installation.
6. **Power On:** Reconnect the power to your Qolsys control panel and power it on. The system should detect the newly installed IQ Card-PG.
7. **System Configuration:** Follow the on-screen prompts or refer to your control panel's manual for any necessary software configuration or sensor pairing steps related to the PowerG module.

Note: If you are unsure about any step, consult a qualified security technician or the official Qolsys support resources.

4. OPERATING PRINCIPLES

Once installed, the IQ Card-PG enables your Qolsys panel to communicate with PowerG wireless sensors. PowerG technology offers several advantages over traditional wireless security protocols:

- **Two-Way Communication:** Sensors and the panel constantly communicate, confirming signals and ensuring reliability.
- **Adaptive Transmission Power:** Sensors automatically adjust their transmission power based on the distance from the panel, conserving battery life and optimizing performance.
- **Frequency Hopping Spread Spectrum (FHSS):** This technique constantly changes frequencies, making the system highly resistant to interference and jamming attempts.
- **TDMA (Time Division Multiple Access):** Allows multiple sensors to communicate with the panel without collisions, improving efficiency and reliability.
- **128-bit AES Encryption:** All communications are encrypted, providing a high level of security against unauthorized access and tampering.

- **Extended Range:** PowerG sensors can operate at significantly greater distances from the control panel compared to other wireless technologies, allowing for broader coverage.

The IQ Card-PG acts as the bridge, translating the PowerG signals for your Qolsys panel, allowing you to integrate a wide range of PowerG-enabled devices such as motion detectors, door/window contacts, and more.

5. MAINTENANCE

The Qolsys IQ Card-PG is designed for long-term, maintenance-free operation once installed. As an internal component, it requires minimal user intervention.

- **Environmental Conditions:** Ensure your Qolsys control panel, and thus the IQ Card-PG, is kept in a dry environment, away from extreme temperatures, humidity, and direct sunlight.
- **Cleaning:** Do not attempt to clean the card directly. If the control panel requires cleaning, follow the manufacturer's instructions for the panel itself.
- **Firmware Updates:** Periodically check for firmware updates for your Qolsys control panel. These updates may include enhancements or bug fixes related to the PowerG module's performance. Follow the update procedures provided by Qolsys.
- **Physical Inspection:** If you ever need to open your control panel for other reasons, you can visually inspect the card to ensure it remains securely seated and free from visible damage.

6. TROUBLESHOOTING

If you encounter issues after installing the IQ Card-PG or with PowerG sensor communication, consider the following troubleshooting steps:

Problem	Possible Cause	Solution
Panel does not recognize IQ Card-PG.	Card not fully seated; panel not powered off during installation; incompatible panel model.	Ensure panel is powered off, then re-seat the card firmly. Verify your panel model is IQ Panel 4, IQ4 Hub, or IQ4 NS. Restart the control panel.
PowerG sensors not pairing or losing connection.	Sensor too far from panel; interference; sensor battery low; incorrect pairing procedure.	Move sensor closer to the panel. Check for sources of interference (e.g., large metal objects, other wireless devices). Replace sensor batteries. Review the sensor's pairing instructions and your panel's manual.
System performance issues after installation.	Firmware outdated; conflict with other modules.	Check for and install any available firmware updates for your Qolsys panel. If multiple expansion modules are installed, ensure they are compatible and correctly configured.

For persistent issues, it is recommended to contact Qolsys technical support or your security system installer.

7. SPECIFICATIONS

Attribute	Detail
Brand	Qolsys
Model Number	QC0008-840
Compatible Devices	IQ Panel 4, IQ4 Hub, IQ4 NS
Connectivity Technology	Wireless (PowerG)
Power Source	Battery Powered (via panel)
Item Dimensions (L x W x H)	1 x 2 x 3 inches
Item Weight	1 pounds
UPC	850037136605

8. WARRANTY AND SUPPORT

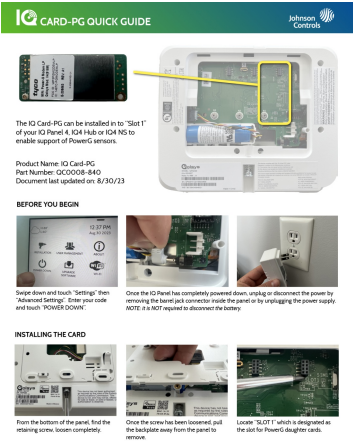
For specific warranty information regarding your Qolsys IQ Card-PG, please refer to the documentation provided with your Qolsys control panel or visit the official Qolsys website. Warranty terms typically cover manufacturing defects for a specified period from the date of purchase.

For technical support, troubleshooting assistance beyond this manual, or inquiries about product registration, please contact Qolsys customer service directly. Their official website usually provides contact details, FAQs, and additional resources.

Disclaimer: This manual provides general guidance. Always refer to the latest official documentation from Qolsys for the most accurate and up-to-date information regarding installation, operation, and troubleshooting.

© 2024 Qolsys. All rights reserved.

Documents - Qolsys – QC0008-840



[pdf] Installation Guide Guide

IQ Card PG Quick Guide QOLSYS qolsys 2023 12 |||

QUICK GUIDE The IQ Card-PG can be installed in to Slot 1 of your IQ Panel 4, IQ4 Hub or IQ4 NS to enable support of PowerG sensors. Product Name: IQ Card-PG Part Number: **QC0008-840** Document last updated on: 8/30/23 BEFORE YOU BEGIN

Swipe down and touch Settings then Advanced Settings . Enter ...

lang:en score:38 filesize: 31.67 M page_count: 2 document date: 2023-12-08