

[Manuals.plus](#) /

> [HiFiGo](#) /

> HiFiGo ROSESELSA Aurora Ultra IEM Instruction Manual

HiFiGo Aurora Ultra

HiFiGo ROSESELSA Aurora Ultra IEM Instruction Manual

Model: Aurora Ultra | Brand: HiFiGo

1. INTRODUCTION

The HiFiGo ROSESELSA Aurora Ultra In-Ear Monitors (IEMs) are designed to deliver a high-fidelity audio experience. These IEMs feature a unique dual-driver configuration, combining a 10mm dynamic driver with a topology diaphragm and a 6mm ultra-linear planar magnetic driver. This hybrid setup aims to provide a wide frequency range with precise high and low frequencies, resulting in a rich and dynamic sound profile. The Aurora Ultra IEMs are engineered for comfort and durability, featuring a metal outer cavity and a detachable 5N OCC cable for optimal signal transmission.

2. PACKAGE CONTENTS

Verify that all items listed below are present in your package:

- ROSESELSA Aurora Ultra In-Ear Monitors (1 pair)
- Detachable 5N OCC IEM Cable with 2-pin 0.78mm connectors and 3.5mm termination
- RZ200m USB DAC Dongle
- Assorted Silicone Ear Tips (various sizes)
- Carrying Case
- User Manual



Image: The complete package contents, including the Aurora Ultra IEMs, their carrying case, the detachable cable, the RZ200m USB DAC, and a selection of ear tips.

3. PRODUCT OVERVIEW

3.1 Key Features

- **Dual-Driver Hybrid Configuration:** Features a 10mm dynamic driver with a topology diaphragm and a 6mm ultra-linear planar magnetic driver for a balanced and detailed sound.
- **Super Sensory Topology Diaphragm:** The 10mm dynamic driver incorporates a third-generation topology diaphragm made from nano-materials, enhancing dynamic range and clarity.
- **Master Reference Sound Tuning:** Developed in collaboration with audio experts for precise, rich, and dynamic sound reproduction.
- **Ergonomic Design:** Lightweight metal outer cavity (3 grams per earbud) and memory ear hook design ensure a comfortable and secure fit.
- **High-Quality Detachable Cable:** Includes a 5N OCC (Ohno Continuous Cast) cable with 2-pin 0.78mm connectors and a 3.5mm single-ended termination for minimal distortion.
- **RZ200m USB DAC:** Enhances the overall audio experience when connected to compatible devices.

3.2 Components

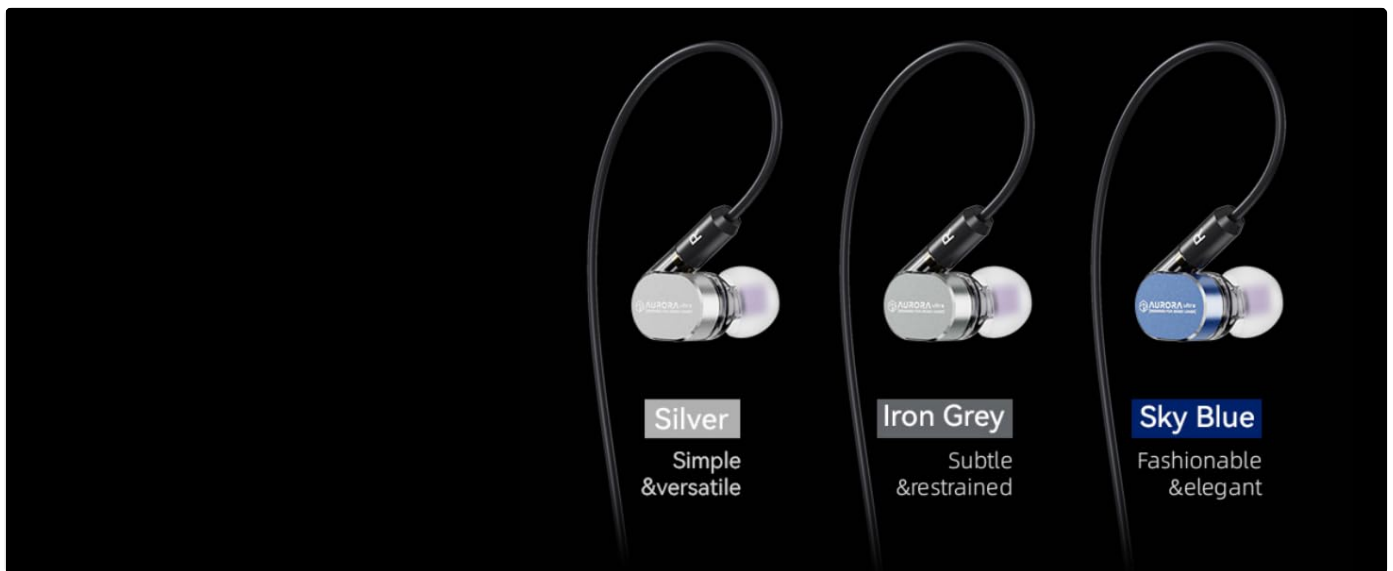


Image: The ROSESELSA Aurora Ultra IEMs are available in Silver, Iron Grey, and Sky Blue color options.

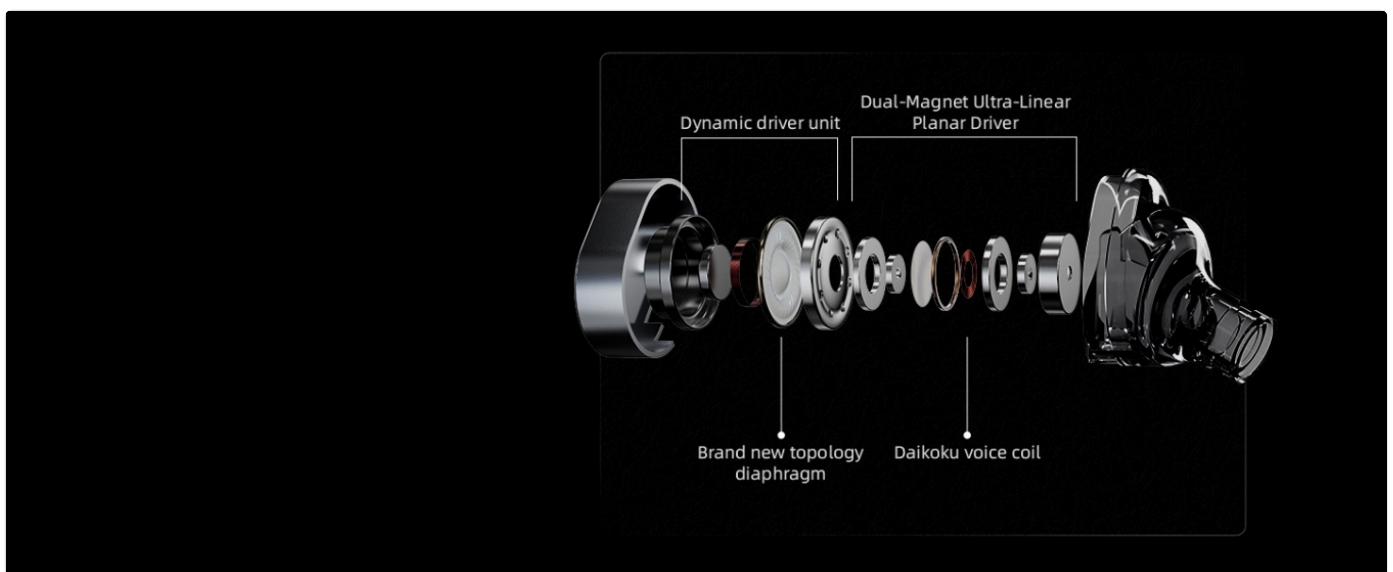


Image: An exploded diagram illustrating the internal 10mm dynamic driver and 6mm planar magnetic driver components.



Image: A detailed view of the Super Sensory Topology Diaphragm, highlighting its advanced micro-structure.



Image: A frequency response graph demonstrating the sound profile of the Aurora Ultra IEMs, sourced from ROSEELSA Acoustic Lab.

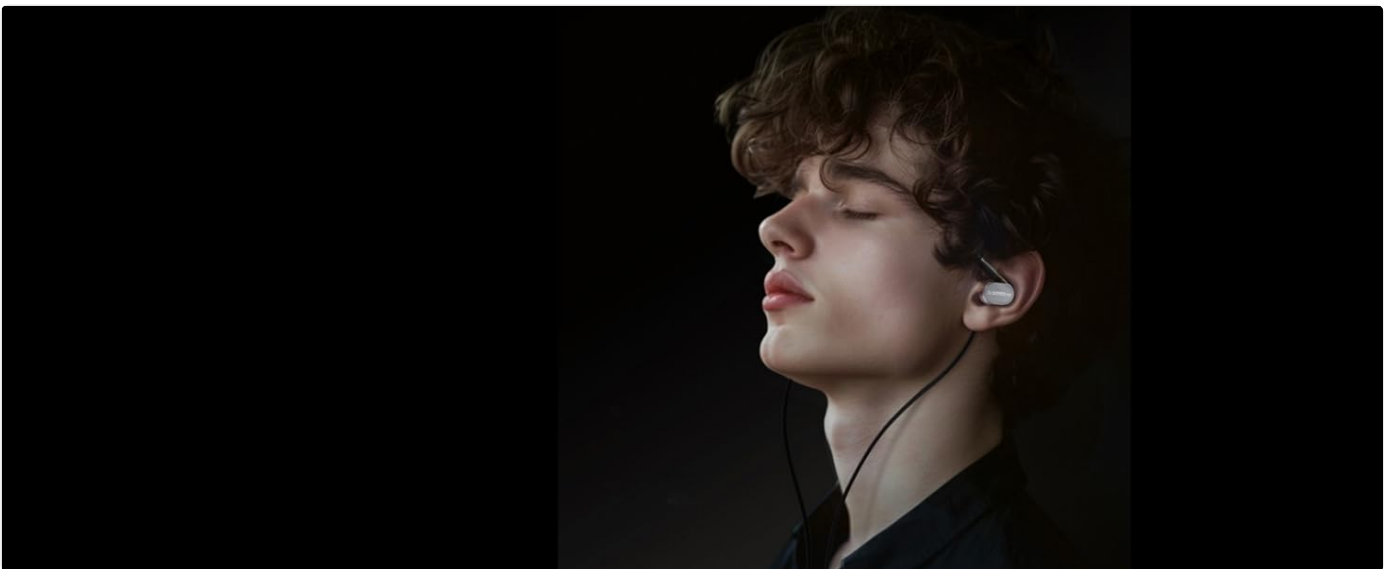


Image: A user wearing the Aurora Ultra IEMs, illustrating their ergonomic design for comfortable, pressure-free wear.

4. SETUP INSTRUCTIONS

4.1 Attaching the Cable

1. Identify the left (L) and right (R) IEM units and the corresponding connectors on the detachable cable.
2. Align the 2-pin 0.78mm connectors on the cable with the receptacles on the IEM units. Ensure correct polarity (usually indicated by a dot or color).
3. Gently push the connectors firmly into place until they are secure. Do not force them.

4.2 Wearing the IEMs

1. Select the appropriate size ear tips for a comfortable and secure fit. A good seal is crucial for optimal sound quality and bass response.
2. Insert the IEMs into your ears, ensuring the cable loops over the top of your ear. The memory ear hook design helps to keep them in place.
3. Adjust the IEMs until they feel snug and comfortable, forming a good seal in your ear canal.

4.3 Connecting to an Audio Source

1. Connect the 3.5mm jack of the IEM cable to your audio source (e.g., smartphone, digital audio player, computer).

- If using the RZ200m USB DAC, connect the 3.5mm jack of the IEM cable to the DAC, then connect the DAC to your device's USB-C port.

5. OPERATING INSTRUCTIONS

5.1 Basic Audio Playback

- Once connected to your audio source, begin playing audio from your device.
- Adjust the volume directly from your connected device.

5.2 Using the RZ200m USB DAC

The RZ200m USB DAC enhances audio quality by converting digital audio signals to analog. Simply connect your IEMs to the DAC and the DAC to your device's USB-C port. No additional drivers are typically required for most operating systems.

6. MAINTENANCE

- Cleaning Ear Tips:** Regularly remove ear tips and clean them with a soft, damp cloth. Ensure they are completely dry before reattaching.
- Cleaning IEM Units:** Use a dry, soft cloth to wipe the IEM units. Avoid using liquids or harsh chemicals. Ensure no moisture enters the driver vents.
- Cable Care:** Store the detachable cable neatly to prevent tangling and damage. Avoid sharp bends or excessive pulling.
- Storage:** When not in use, store the IEMs and cable in the provided carrying case to protect them from dust and physical damage.

7. TROUBLESHOOTING

7.1 No Sound or Intermittent Audio

- Ensure the cable is securely connected to both the IEM units and the audio source.
- Check the volume level on your audio source.
- Test with a different audio source or cable to isolate the issue.
- Verify that the ear tips are properly seated and forming a good seal in your ears.

7.2 Poor Sound Quality (e.g., lack of bass, distorted sound)

- Ensure the ear tips provide a proper seal. Try different sizes if necessary.
- Check the audio source for any equalizer settings or audio enhancements that might be affecting the sound.
- Ensure the cable connectors are clean and free of debris.

8. SPECIFICATIONS

Feature	Specification
Brand	HiFiGo
Model Name	Aurora Ultra
Ear Placement	In Ear
Form Factor	In Ear

Impedance	30 Ohms
Sensitivity	115 dB
Frequency Range	20 Hz to 20,000 Hz
Audio Driver Type	Hybrid Driver (1 Planar + 1 Dynamic)
Enclosure Material	Acrylonitrile Butadiene Styrene (ABS)
Item Weight	8 ounces
Cable Features	Detachable
Headphone Jack	3.5 mm Jack
Connectivity Technology	Wired
Control Method	Push Button (via connected device/DAC)

9. WARRANTY AND SUPPORT

9.1 Warranty Information

The HiFiGo ROSEELSA Aurora Ultra IEMs come with a **1-year manufacturer's warranty** from the date of purchase. This warranty covers defects in materials and workmanship under normal use. It does not cover damage caused by misuse, accidents, unauthorized modifications, or normal wear and tear.

9.2 Customer Support

For technical support, warranty claims, or any inquiries regarding your ROSEELSA Aurora Ultra IEMs, please contact HiFiGo customer service through their official website or the retailer where the product was purchased. Please have your proof of purchase ready when contacting support.