

[manuals.plus](#) /

› [roborock](#) /

› [roborock Qrevo Series Robot Vacuum and Mop User Manual](#)

roborock Roborock QV 35A

roborock Qrevo Series Robot Vacuum and Mop User Manual

Model: QV 35A

Brand: roborock

1. PRODUCT OVERVIEW

The roborock Qrevo Series Robot Vacuum and Mop is an advanced cleaning device designed to automate floor care. Featuring 8000Pa HyperForce suction and dual spinning mops, it effectively vacuums and mops various floor types. The all-in-one docking station provides automatic dust emptying, water refilling, and mop washing/drying for a truly hands-free experience.



Image: Roborock Qrevo Series Robot Vacuum and Mop with All-in-One Dock. The robot is black, positioned in front of its tall, black docking station. A smartphone and smartwatch displaying the Roborock app are shown in the foreground.

2. WHAT'S IN THE BOX

Verify that all components are present in the packaging:

- Robot Vacuum (1)
- Multifunctional Dock (1)
- Dock Base (1)
- Power Cable (1)
- Disposable Dust Bag (1) (pre-installed in dock)
- Rotating Mop Module Set (1)
- User Manual (1)

Roborock SmartPlan

Setting the room and floor type in the Roborock App, the robot vacuum will be tailored to your home with different water flow and suction power for the perfect clean.



Image: Roborock QV 35A Full Package List. This image displays all components included in the box: the circular robot vacuum, the tall rectangular multifunctional dock, the dock base, power cord, disposable dust bag, and rotating mop module set.

3. SETUP

3.1 Docking Station Placement

Place the multifunctional dock on a hard, level surface against a wall. Ensure there are no obstacles within 0.5 meters (1.6 feet) to either side and 1.5 meters (4.9 feet) in front of the dock for optimal robot navigation.

3.2 Robot Preparation

Attach the mop modules to the bottom of the robot. Ensure they are securely clicked into place. The robot comes with a pre-installed main brush and side brush.

3.3 App Download and Connection

Download the Roborock app from your device's app store. Open the app and follow the on-screen instructions to add your device. You may need to scan a QR code located on the robot or dock to initiate the connection process. Ensure your mobile device is connected to a 2.4G Wi-Fi network.

3.4 Initial Mapping

After successful connection, the app will prompt you to start an initial mapping run. The robot will use its PreciSense LiDAR Navigation system to scan your home and create a detailed map. This map is crucial for efficient cleaning and enabling advanced features like no-go zones and multi-floor mapping.

It Thinks. It Plans. You Relax.



Adaptive Route Algorithms



Sentient Sensor Array



Reactive Tech Obstacle Avoidance



PreciSense LiDAR Navigation



Roborock SmartPlan



Smart Suggestions for No-Go-Zones

Image: Roborock Qrevo Series Smart Mapping and Obstacle Avoidance. The robot uses LiDAR to map the room and Reactive Tech to avoid obstacles like shoes and furniture.

4. OPERATING INSTRUCTIONS

4.1 Basic Cleaning Modes

You can initiate cleaning directly from the robot's physical buttons or through the Roborock app. Available modes include:

- **Vacuum Only:** For dry debris collection.
- **Mop Only:** For wet mopping without vacuuming.
- **Vacuum & Mop:** Simultaneous vacuuming and mopping.

Excellent Mopping Capability

The advanced mopping system with high-speed rotation, 30-level water flow, and a 10mm lifting function delivers unmatched cleaning performance on every surface.



10mm
Mops Lifting



200RPM
Dual Spinning Mops



30-level
Water Flow

Image: Roborock Qrevo Series Robot Vacuum demonstrating excellent mopping capability on a kitchen floor. Features include 10mm Mops Lifting, 200RPM Dual Spinning Mops, and 30-level Water Flow.

4.2 Advanced App Features

The Roborock app provides extensive control over your robot:

- **Custom Routes:** Define specific cleaning paths.
- **Scheduling:** Set daily or weekly cleaning schedules.
- **No-Go Zones:** Draw virtual boundaries to restrict access to certain areas (e.g., stairs, pet bowls).
- **Multi-Floor Mapping:** Store maps for up to 4 different floor levels.
- **Carpet Cleaning Strategies:** Customize how the robot handles carpets (e.g., Carpet Boost, Deep Carpet Cleaning, Vacuum Carpet First).

Liftable Mops & Carpet Cleaning

With the **10mm** mops lifting and specialized carpet cleaning strategies, the robot effortlessly transitions from hard floors to low-pile carpets to deliver optimal cleaning.



Carpet Boost

Boost suction power when on carpets.



Deep Carpet Cleaning

Clean your carpet twice for each room.



Vacuum Carpet First

Vacuum carpet first with a dry mop before mopping.

Image: Roborock Qrevo Series Robot Vacuum demonstrating liftable mops for carpet cleaning. The robot can lift its mops by 10mm to transition over low-pile carpets and offers various carpet cleaning strategies.

4.3 Voice Control Integration

The robot supports voice commands via Amazon Alexa, Google Home, and Apple Siri Shortcuts for convenient hands-free operation.

Take Control of Cleaning



Amazon Alexa



Google Home



Siri Shortcuts



Third-Party Voice Control



Roborock App

Image: Roborock Qrevo Series Robot Vacuum controlled via third-party voice control (Amazon Alexa, Google Home, Siri Shortcuts) and the Roborock App.

4.4 Reactive Tech Obstacle Avoidance

Equipped with Reactive Tech, the robot intelligently detects and avoids common household obstacles like furniture, cords, and shoes, ensuring uninterrupted cleaning.

Reactive Tech Obstacle Avoidance

Equipped with advanced obstacle detection and avoidance technology, it navigates seamlessly around furniture, cords, and clutter for a hassle-free cleaning experience.



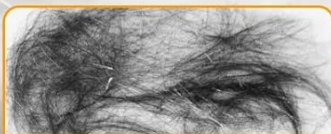
Image: Roborock Qrevo Series Robot Vacuum using Reactive Tech for obstacle avoidance, navigating around slippers and other items on the floor.

4.5 HyperForce Suction

The 8000Pa HyperForce suction power effectively picks up embedded dirt, debris, and pet hair from various surfaces, including carpets and hard floors.

8000Pa HyperForce Suction

Experience superior suction performance that effortlessly tackles dirt, debris, and pet hair on any surface for deep cleaning.



Buried hair and fur



Pet food



Cereal and crumbs

Image: Roborock Qrevo Series Robot Vacuum demonstrating 8000Pa HyperForce Suction, effectively picking up buried hair, pet food, and cereal/crumbs.

5. MAINTENANCE

5.1 All-in-One Dock Maintenance

The docking station is designed for minimal user intervention:

- **Auto Dust Emptying:** The robot automatically empties its dustbin into a sealed 2.7L dust bag in the dock, requiring replacement approximately every 7 weeks.
- **Auto Tank Refilling:** The dock refills the robot's water tank from its 4L clean water tank, providing coverage for up to 3552 sqft.
- **Mop Self-Washing & Air Drying:** The dock thoroughly washes the mop pads and then dries them with hot air to prevent odors and mildew.
- **Detachable Dock Base:** The dock base is fully removable for easy cleaning to prevent clogging.

All-in-One Multifunctional Station



Image: Roborock Qrevo Series All-in-One Multifunctional Station, highlighting features like Mop Self-Washing, Air Drying, Auto Dust Emptying, Auto Tank Refilling, Detachable Base, and 30% Fast Charging.

5.2 Robot Maintenance

Regular cleaning of robot components ensures optimal performance:

- **Tangle-Free Brush System:** The upgraded asymmetrical side brush and full-rubber spiral main brush are designed to prevent hair tangles. Regularly check and clean brushes for any accumulated debris.
- **Filter Cleaning:** The robot's filter should be cleaned periodically. Refer to the user manual for specific cleaning instructions and replacement frequency.
- **Mop Pad Care:** While the dock self-washes, occasionally inspect mop pads for wear and tear, and replace as needed.

Hair-Free. Hassle-Free.

Dual Anti-Tangle System

0%

Hair Tangling for Side Brush

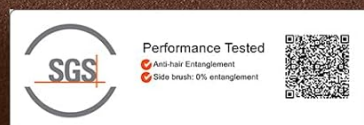


Image: Roborock Qrevo Series Robot Vacuum with Dual Anti-Tangle System, showing the Zero-Tangle Arc Side Brush and All-Rubber Anti-Tangle Brush for hair-free cleaning.

6. TROUBLESHOOTING

If you encounter issues, refer to the following common troubleshooting steps:

- **Robot not charging:** Ensure the dock is powered on and the robot is correctly docked. Clean charging contacts on both the robot and the dock.
- **Robot getting stuck:** Check for tangled cables, small objects, or high thresholds. Define no-go zones in the app for problematic areas.
- **Poor cleaning performance:** Clean main brush, side brush, and filter. Ensure water tanks are filled and mop pads are clean.
- **App connectivity issues:** Verify Wi-Fi connection (2.4G only). Restart the robot and your router. Re-pair the device if necessary.

- **Unusual noises:** Check brushes and wheels for any foreign objects. Clean the dustbin and filter.

For more detailed troubleshooting, please consult the full user manual or contact customer support.

7. SPECIFICATIONS

- **Brand:** roborock
- **Model Name:** Roborock QV 35A
- **Product Dimensions:** 16.61"L x 17.32"W x 23.5"H
- **Item Weight:** 33.5 pounds
- **Suction Power:** 8000Pa HyperForce
- **Battery Life:** 180 minutes
- **Voltage:** 120 Volts
- **Control Method:** App, Voice
- **Filter Type:** Washable
- **Dust Bag Capacity:** 2.7L (approx. 7 weeks)
- **Clean Water Tank Capacity:** 4L (up to 3552 sqft coverage)
- **Mopping System:** Dual Spinning Mops (200RPM), 10mm Mop Lift, 30 adjustable water levels
- **Navigation:** PreciSense LiDAR Navigation
- **Obstacle Avoidance:** Reactive Tech
- **Wi-Fi Support:** 2.4G WiFi only

8. OFFICIAL PRODUCT VIDEO

Watch the official product video for a visual guide on the roborock QV 35A Robot Vacuum's features and operation.

Your browser does not support the video tag.

Video: Roborock QV 35A Robot Vacuum - Official Product Overview. This video showcases the robot's design, cleaning capabilities, and the functionality of its all-in-one docking station.

9. WARRANTY AND SUPPORT

For warranty information, technical support, or service inquiries, please visit the official roborock website or contact their customer service directly. Refer to the included User Manual for detailed warranty terms and contact information.

Manufacturer: roborock

Model Number: Roborock QV 35A

UPC: 195043006697

