

BEMOONY F19

BEMOONY Automatic Cat Feeder Wet Food Ice Packs User Manual

Model: F19

INTRODUCTION

Thank you for choosing the BEMOONY Automatic Cat Feeder Wet Food Ice Packs. These ice packs are designed to maintain the freshness of wet pet food within your BEMOONY automatic cat feeder, ensuring your pet receives fresh meals throughout the day. Their compact and durable design offers strong preservation capabilities and convenient installation.

SETUP INSTRUCTIONS

Before first use, and for each subsequent use, follow these steps to prepare your ice packs:

1. Ensure the ice pack is clean and undamaged.
2. Place the ice pack flat in a freezer.
3. Freeze for at least 6 hours to achieve optimal cooling effect. For best results and extended freshness, freezing for longer periods is recommended.

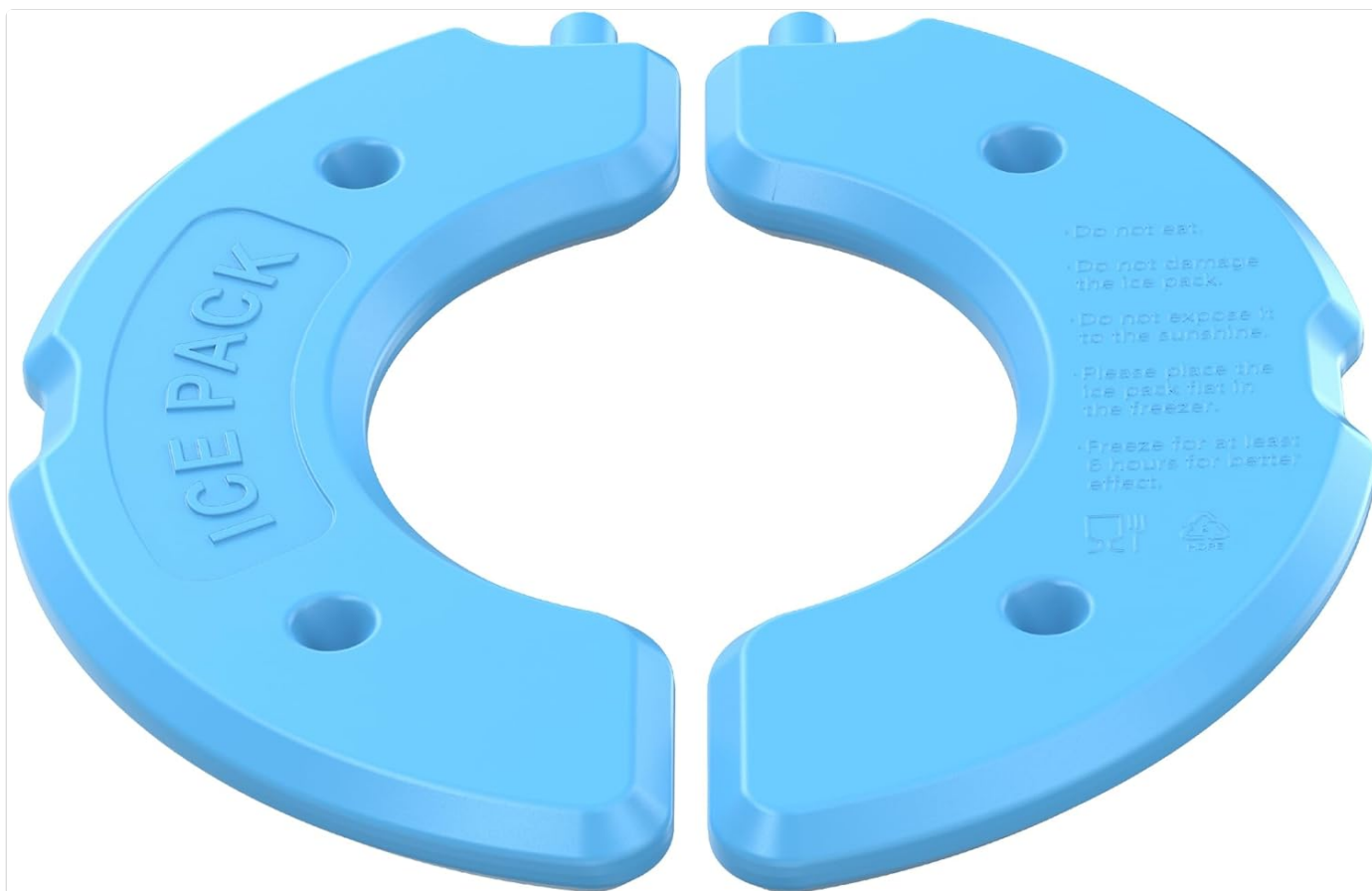


Image: Two light blue, crescent-shaped ice packs designed to fit within the BEMOONY automatic cat feeder. One ice pack clearly shows text instructions: 'Do not eat. Do not damage the ice pack. Do not expose it to the sunshine. Please place the ice pack flat in the freezer. Freeze for at least 6 hours for better effect.' These ice packs are essential for keeping wet pet food fresh for extended periods.

OPERATING INSTRUCTIONS

Once frozen, the ice packs are ready for use with your BEMOONY automatic cat feeder:

- **Installation:** The ice packs feature a snap-on design for easy installation and disassembly. Simply align the ice pack with the designated compartment in your BEMOONY automatic cat feeder and snap it into place. No tools are required, allowing for one-handed operation.
- **Preservation:** These ice packs are made from high cold storage material, offering 1.5 times the cold storage capacity of ordinary ice packs. A single frozen ice pack can help keep wet food fresh for more than 12 hours, ensuring your pet's food remains palatable and safe.
- **Adaptability:** The compact shape of these ice packs is specifically designed to fit the BEMOONY automatic cat feeder without occupying extra space, providing seamless integration for users who require long-term wet food feeding solutions.

CARE AND MAINTENANCE

Proper care will extend the lifespan of your BEMOONY ice packs:

- **Cleaning:** Wipe the ice packs with a damp cloth and mild soap if necessary. Rinse thoroughly and dry completely before refreezing or storing.
- **Handling:** Do not damage the ice pack by puncturing, cutting, or bending excessively.
- **Storage:** When not in use, store the ice packs in a cool, dry place away from direct sunlight. Do not expose them to direct sunshine for prolonged periods.
- **Durability:** Made from high-strength, low-temperature resistant material, these ice packs are anti-fall and wear-

resistant, designed for repeated freezing and storage cycles.

Important Safety Information: Do not eat the contents of the ice pack.

TROUBLESHOOTING

If you encounter issues with your BEMOONY ice packs, consider the following:

- **Ice Pack Not Staying Cold Long Enough:**
 - Ensure the ice pack was frozen flat for at least 6 hours, or preferably longer, before use.
 - Verify that the feeder's compartment is properly sealed to maximize insulation.
 - Consider environmental factors such as room temperature, which can affect cooling duration.
- **Ice Pack Appears Damaged or Leaking:**
 - Immediately discontinue use if the ice pack is visibly damaged or leaking.
 - Do not attempt to repair a damaged ice pack. Dispose of it according to local regulations and replace it with a new one.

PRODUCT SPECIFICATIONS

Model Name	F19
Brand	BEMOONY
Included Components	2 Ice packs
Material	Acrylonitrile Butadiene Styrene
Color	Blue
Item Dimensions (LxWxH)	5 x 11 x 1.8 inches
Item Weight	1.46 pounds
Specific Uses for Product	Keep food fresh
Target Species	Small and medium dogs and cats




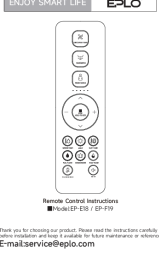


WARRANTY INFORMATION

The BEMOONY Automatic Cat Feeder Wet Food Ice Packs come with a **2-year warranty** from the date of purchase. This warranty covers manufacturing defects and material flaws under normal use. Please retain your proof of purchase for warranty claims. The warranty does not cover damage caused by misuse, accidents, unauthorized modifications, or normal wear and tear.

CUSTOMER SUPPORT

For any questions, concerns, or assistance regarding your BEMOONY Automatic Cat Feeder Wet Food Ice Packs, please contact BEMOONY customer support. Refer to the product packaging or the official BEMOONY website for the most current contact information.

Related Documents - F19

 <p>The cover of the DROCON F19 Drone User Manual features the brand name 'DROCON' at the top, followed by 'F19 USER MANUAL'. It includes a line drawing of the drone and the slogan 'THE SKY IS THE LIMIT' with the website 'www.drocon.com' and 'www.droconusa.com' at the bottom.</p>	<p>DROCON F19 Drone User Manual</p> <p>Comprehensive user manual for the DROCON F19 drone, covering package contents, charging, installation, remote controller operation, flight controls, special functions like return-to-home and headless mode, photography/videography, technical specifications, FAQs, battery safety, and app usage.</p>
 <p>The cover of the Fisher F19 Metal Detector Owner's Manual shows the 'FISHER F19' logo and a photograph of the metal detector unit.</p>	<p>Fisher F19 Metal Detector Owner's Manual</p> <p>Comprehensive owner's manual for the Fisher F19 metal detector, detailing assembly, operation, features like ground balancing and discrimination, search techniques, and maintenance. Ideal for relic hunting, gold prospecting, and general treasure hunting.</p>
 <p>The cover of the Loshall Anti-lost Device User Manual displays a grid of small images showing various features and usage scenarios of the device.</p>	<p>Loshall Anti-lost Device User Manual</p> <p>User manual for the Loshall Anti-lost Device, detailing setup, pairing, locating, and lost mode features using Apple's Find My network.</p>
 <p>The cover of the EPLO Remote Control Instructions for EP-E18 / EP-F19 features the 'ENJOY SMART LIFE' slogan, the 'EPLO' logo, and a photograph of the remote control.</p>	<p>EPLO Remote Control Instructions for EP-E18 / EP-F19</p> <p>Detailed instructions for the EPLO EP-E18 and EP-F19 remote control, covering installation, battery replacement, and all usage functions like washing, drying, temperature adjustments, and special modes.</p>
 <p>The cover of the Contixo F19 Drone Instruction Manual includes the 'CONTIXO' logo, a '14+' age rating, and a photograph of the drone.</p>	<p>Contixo F19 Drone Instruction Manual</p> <p>Comprehensive instruction manual for the Contixo F19 RC Drone, covering setup, flight operations, safety precautions, app usage, and troubleshooting.</p>
 <p>The cover of the EPLO EP-E18 / EP-F19 Smart Toilet Installation and User Manual features the 'ENJOY SMART LIFE' slogan, the 'EPLO' logo, and a photograph of the smart toilet.</p>	<p>EPLO EP-E18 / EP-F19 Smart Toilet Installation and User Manual</p> <p>This document provides comprehensive installation, maintenance, and troubleshooting instructions for the EPLO EP-E18 and EP-F19 smart toilet models. It includes safety guidelines, technical specifications, parts identification, and step-by-step procedures.</p>

