



[Manuals.plus](#) /

› [Yaheetech](#) /

› User Manual: Yaheetech Console Table YT-00143134

## Yaheetech YT-00143134

# User Manual: Yaheetech Console Table

Model: YT-00143134 | Brand: Yaheetech

## INTRODUCTION

---

Thank you for choosing the Yaheetech Console Table. This 55-inch rustic brown 3-tier entryway table with a durable metal frame is designed to provide versatile storage and display solutions for your home. This manual provides essential information for the assembly, usage, maintenance, and care of your new console table. Please read these instructions carefully before assembly and retain them for future reference.



Image: The Yaheetech Console Table, a 55-inch rustic brown unit with a metal frame, positioned behind a couch in a living room, demonstrating its intended use and aesthetic.

## SAFETY INFORMATION

---

To ensure safe use of your Yaheetech Console Table, please adhere to the following guidelines:

- **Do not stand on the tabletop.** This table is designed for storage and display, not as a step stool or climbing surface.
- **Do not overload the table.** The tabletop has a maximum weight capacity of 66 lbs, and each shelf has a maximum weight capacity of 55 lbs. Distribute weight evenly.
- Ensure all screws and fasteners are securely tightened before use and periodically check for tightness.
- Keep small parts and packaging materials away from children during assembly to prevent choking hazards.
- Assemble the table on a soft, clean surface to prevent scratches.

## COMPONENTS LIST

---

Before beginning assembly, please verify that all components listed below are present and undamaged. If any parts are missing or damaged, please contact customer support.

- 1 × Console Table (disassembled components)
- 1 × Accessory Kit (includes all necessary screws, bolts, and tools)
- 1 × Instructions (detailed assembly guide)

## ASSEMBLY INSTRUCTIONS

---

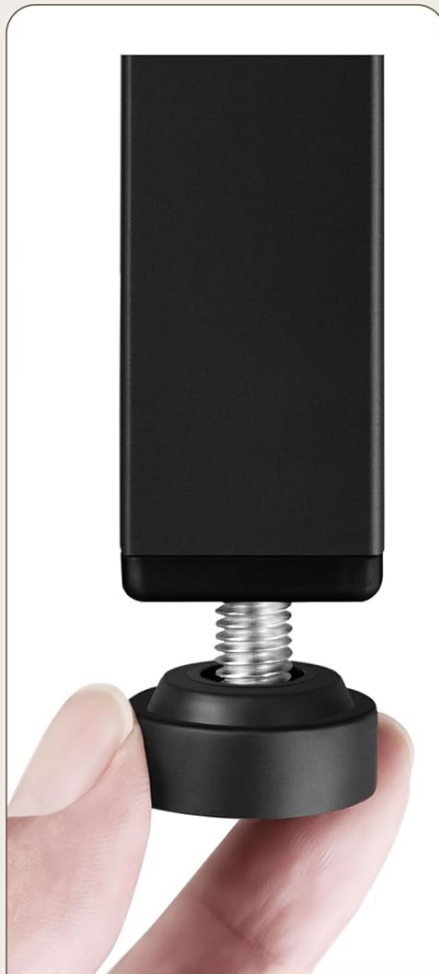
The Yaheetech Console Table is designed for straightforward assembly. It is recommended that **2 people** participate in the assembly process to ensure stability and ease of construction. A **screwdriver** is the recommended tool for assembly.

1. **Unpack and Identify Parts:** Carefully unpack all components and lay them out on a soft, clean surface to prevent scratches. Refer to the included detailed instructions and parts list to identify each piece.
2. **Assemble Frame:** Begin by attaching the metal frame components. The X-shape reinforced structures on the sides provide extra stability and should be securely fastened.
3. **Attach Shelves:** Once the frame is stable, attach the rustic brown engineered wood shelves to the designated slots on the metal frame. Ensure they are level and securely fastened.
4. **Install Adjustable Footpads:** Screw in the protective, adjustable footpads at the base of each leg. These allow for flexible height adjustment to accommodate uneven floors, ensuring the table remains stable.
5. **Final Tightening:** Once all components are in place, carefully tighten all screws and bolts. Do not overtighten, but ensure all connections are firm.

# Stable & Solid



Robust Steel



Adjustable Footpads



Cross-Side Design

Image: Details of the table's construction, highlighting the robust steel frame, adjustable footpads for stability on uneven surfaces, and the X-shape cross-side design for enhanced structural integrity.



Image: Detailed views of the adjustable footpads for leveling, the robust steel frame connections, and the X-shaped side structure that enhances stability.

For a more detailed visual guide, please refer to the user-accessible instructions and guidance video that accompany your product package.

## OPERATING AND USAGE

The Yaheetech Console Table is designed with open storage, offering versatile application beyond just a TV stand. Its three open tiers provide ample space for various items.

- **Living Room:** Ideal as a sofa table behind your couch for lamps, books, or decorative items.
- **Entryway/Hallway:** Perfect as an entryway table for keys, mail, or small decor, creating a welcoming space.
- **Kitchen/Dining Area:** Can serve as a storage unit for appliances, tableware, or cookbooks.
- **Study/Office:** Use it to organize books, files, or display collections.
- **Display:** The open shelving is perfect for showcasing decorative pieces, plants, or framed photos.



Image: A detailed view of the three open storage layers, illustrating how various items such as DVDs, a soundbox, remote controls, and books can be neatly organized and displayed.

## MAINTENANCE

---

Proper care will help maintain the appearance and longevity of your Yaheetech Console Table.

- **Cleaning:** Wipe with a damp cloth. Avoid using harsh chemicals or abrasive cleaners, which can damage the finish.
- **Spills:** Promptly wipe up any spills to prevent staining or water damage to the engineered wood surfaces. The surface is designed to be stain resistant.
- **Dusting:** Regularly dust with a soft, dry cloth to prevent buildup.
- **Inspection:** Periodically check all screws and connections to ensure they remain tight. Retighten if necessary.
- **Placement:** Avoid placing the table in direct sunlight or near heat sources, which can cause fading or warping.



Image: A hand demonstrating the ease of cleaning the table surface with a damp cloth, highlighting its stain-resistant properties.

## TROUBLESHOOTING

---

If you encounter any issues with your console table, please refer to the following common troubleshooting tips:

- **Table Wobbles:**
  - Ensure all screws and bolts are securely tightened.
  - Adjust the protective footpads at the bottom of each leg to level the table on uneven floors.
- **Parts Don't Align During Assembly:**
  - Double-check the orientation of each part against the assembly instructions. Some parts may look similar but have specific alignments.
  - Loosen all screws slightly, align the parts, and then retighten them evenly.
- **Scratches on Surface:**
  - For minor scratches, a furniture repair marker or wax stick matching the rustic brown finish may help conceal them.
  - Always use coasters or protective pads under items that might scratch the surface.

If the issue persists or if you encounter problems not listed here, please contact Yaheetech customer support for assistance.

## SPECIFICATIONS

---

Detailed specifications for your Yaheetech Console Table:

Feature	Detail
Brand	Yaheetech

Feature	Detail
Model Name	sofa console table
Model Number	YT-00143134
Product Dimensions (D x W x H)	14"D x 55"W x 24"H
Color	Rustic Brown
Material Type	Engineered Wood, Iron
Top Material Type	Engineered Wood
Frame Material Type	Iron
Maximum Weight Recommendation (Tabletop)	66 Pounds
Maximum Weight Recommendation (Each Shelf)	55 Pounds
Number Of Shelves	3
Item Weight	40.45 Pounds
Product Care Instructions	Wipe with Damp Cloth
Recommended Number of People for Assembly	2
Tools Recommended For Assembly	Screw Driver

## Max Weight Capacity:

Tabletop: 66 lb

Each Shelf: 55 lb



Image: A detailed diagram illustrating the dimensions of the console table (55"W x 14"D x 24"H) and the weight capacities for the tabletop (66 lbs) and each shelf (55 lbs).

## WARRANTY AND SUPPORT

Yaheetech is committed to providing high-quality products and customer satisfaction. While specific warranty details are not provided in this manual, please retain your proof of purchase for any warranty claims.

For product support, missing parts, or any inquiries, please contact Yaheetech customer service through the retailer where you purchased the product or visit the official Yaheetech website for contact information.

**Manufacturer:** Yaheetech

