

seenda SK73-3

seenda SK73-3 Wireless Keyboard and Mouse Combo Instruction Manual

Model: SK73-3

1. INTRODUCTION

This manual provides detailed instructions for the setup, operation, and maintenance of your seenda SK73-3 Wireless Keyboard and Mouse Combo. This combo features a full-size keyboard with rounded keycaps and an ergonomic mouse, both connecting via a single 2-in-1 USB-A/Type-C receiver. It is designed for broad compatibility with Windows and Mac OS systems.

2. PACKAGE CONTENTS

- Wireless Keyboard
- Wireless Mouse
- 2-in-1 USB-A & Type-C Receiver (stored inside the mouse)
- User Manual

3. SETUP

3.1 Battery Installation

1. Open the battery compartment on the back of the keyboard. Insert one AAA battery, ensuring correct polarity.
2. Open the battery compartment on the back of the mouse. Insert one AA battery, ensuring correct polarity. The 2-in-1 USB-A/Type-C receiver is stored in this compartment.
3. Close both battery compartments securely.



Figure 3.1: Battery installation for the keyboard and mouse. The 2-in-1 receiver is located in the mouse's battery compartment.

3.2 Connecting the Receiver

1. Remove the 2-in-1 USB-A/Type-C receiver from the mouse's battery compartment.
2. Insert the receiver fully into an available USB-A or Type-C port on your computer. Ensure the port completely covers the receiver for proper connection.
3. Turn on the keyboard and mouse using their respective power switches. The devices are plug-and-play and should connect automatically.

How to Re-pair Keyboard with Receiver:

- 1) Unplug the receiver, restart the keyboard switch to "ON"
- 2) Press and hold the "esc" key and "+/= " key at the same time for about 3-5 seconds, release your hand when the power indicator lights up red
- 3) Put the keyboard close to the port of the device [at a distance of 30-50cm](#)
- 4) Insert the receiver [fully into](#) the USB-A or Type-C port [within 20 seconds](#), the red light will turn off, then the pairing is successful
- 5) If you can not connect, please try to repeat the operation 2 times

How to Re-pair Mouse with Receiver:

- 1) Unplug the receiver, restart the mouse switch to "ON"
- 2) Press and hold the left button + scroll wheel + right button at the same time for about 5-8 seconds and then release your hand, the indicator light at the bottom of the mouse lights up red
- 3) Put the mouse close to the port of the device [at a distance of 30-50cm](#)
- 4) Insert the receiver [fully into](#) the USB-A or Type-C port [within 20 seconds](#), the pairing is successful
- 5) If you can not connect, please try to repeat the operation 2 times

Figure 3.2: Proper insertion of the 2-in-1 USB-A/Type-C receiver into a computer port.

3.3 System Layout Switching

The keyboard supports both Windows and Mac OS layouts. To switch between layouts:

- For **Windows** layout: Press the **Win** key.
- For **Mac OS** layout: Press the **OS** key.

The upper indicator light will illuminate green to confirm the switch.

WINDOWS & MAC OS LAYOUTS

Note: Compatible with Windows XP/Vista/7/8/10+, and Mac OS 10.14 or above



Windows: Press Win Key
Activate: win, alt, numlock



Mac OS: Press OS key
Activate: option, cmd, clear

Figure 3.3: Keyboard keys for switching between Windows and Mac OS layouts.

Video 3.1: Demonstration of connecting the USB/Type C receiver and switching between system layouts.

4. OPERATING INSTRUCTIONS

4.1 Keyboard Usage

The keyboard features responsive, rounded keycaps designed for comfortable and precise typing. Each keystroke is intended to be fluid and accurate.



Figure 4.1: The retro rounded keycaps provide a distinct typing experience.

4.2 Mouse Usage

The ergonomic mouse has a curved surface for comfortable grip and smooth, quick clicking. It is designed to promote correct posture during use.



Figure 4.2: The ergonomic design of the keyboard and mouse promotes comfort during use.

4.3 Function Keys

The keyboard includes dedicated function keys (F1-F12) for quick access to various system controls:

- **F1:** Mute
- **F2:** Volume Down
- **F3:** Volume Up
- **F4:** Previous Track
- **F5:** Play/Pause
- **F6:** Next Track
- **F7:** Brightness Down
- **F8:** Brightness Up
- **F9:** Program List
- **F10:** Home
- **F11:** Copy
- **F12:** Paste

- Additional keys for Save/Fn Lock, Search, and Turn Off Screen.

Important Tips Before Use:

- 1) Please confirm the positive and negative poles when installing the batteries
- 2) When inserting the receiver, please make sure it is fully inserted into the USB-A or Type-C port without any gaps -- Especially the Type-C port, it will be a bit tight when inserted. The port needs to completely cover the receiver, otherwise you may not be able to connect the device and switch to the OS system
- 3) There have "Win" and "OS" keys on the keyboard, please press them to switch to the Windows or Mac OS system before use, the upper indicator will light up green

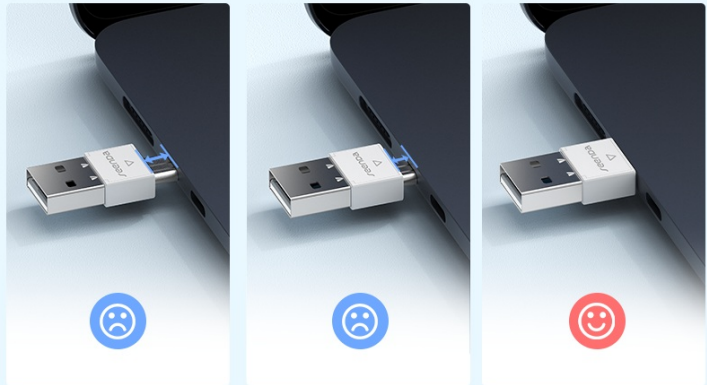


Figure 4.3: Overview of keyboard function keys and their shortcuts.

5. MAINTENANCE

5.1 Battery Replacement

When the keyboard or mouse performance degrades (e.g., unresponsive keys, mouse lag), it may be time to replace the batteries. Follow the battery installation steps in Section 3.1.

5.2 Cleaning

To keep your keyboard clean and prevent dust or debris from accumulating between keys, utilize the provided silicone keyboard cover. For general cleaning, gently wipe the surfaces with a soft, damp cloth. Avoid harsh chemicals.



Figure 5.1: The silicone keyboard cover helps protect against dust and spills.

6. TROUBLESHOOTING

6.1 Re-pairing Keyboard with Receiver

1. Unplug the receiver from your device.
2. Restart the keyboard switch to "ON".
3. Press and hold the "esc" key and "+/= " key at the same time for about 3-5 seconds. Release your hand when the power indicator lights up red.
4. Put the keyboard close to the port of the device (within 20cm).
5. Insert the receiver fully into the USB-A or Type-C port within 20 seconds. The red light will turn off, indicating successful pairing.
6. If connection fails, repeat the operation 2 times.

6.2 Re-pairing Mouse with Receiver

1. Unplug the receiver from your device.

2. Restart the mouse switch to "ON".
3. Press and hold the left button + scroll wheel + right button at the same time for about 5-8 seconds. Release your hand, and the indicator light at the bottom of the mouse will light up red.
4. Put the mouse close to the port of the device (within 20cm).
5. Insert the receiver fully into the USB-A or Type-C port within 20 seconds. The pairing is successful.
6. If connection fails, repeat the operation 2 times.

How to Re-pair Keyboard with Receiver:

- 1) Unplug the receiver, restart the keyboard switch to "ON"
- 2) Press and hold the "esc" key and "+/= " key at the same time for about 3-5 seconds, release your hand when the power indicator lights up red
- 3) Put the keyboard close to the port of the device **within a distance of 20cm**
- 4) Insert the receiver **fully into** the USB-A or Type-C port **within 20 seconds**, the red light will turn off, then the pairing is successful
- 5) If you can not connect, please try to repeat the operation 2 times

How to Re-pair Mouse with Receiver:

- 1) Unplug the receiver, restart the mouse switch to "ON"
- 2) Press and hold the left button + scroll wheel + right button at the same time for about 5-8 seconds and then release your hand, the indicator light at the bottom of the mouse lights up red
- 3) Put the mouse close to the port of the device **within a distance of 20cm**
- 4) Insert the receiver **fully into** the USB-A or Type-C port **within 20 seconds**, the pairing is successful
- 5) If you can not connect, please try to repeat the operation 2 times

Figure 6.1: Detailed steps for re-pairing the keyboard and mouse.

6.3 Common Issues

- **Unresponsive or Lagging Device:** Check battery levels and replace if necessary. Ensure the receiver is fully inserted into the USB port. Try re-pairing the device as per instructions above.
- **Incorrect Key Output:** Verify that the correct system layout (Windows or Mac OS) is selected on the keyboard.

7. SPECIFICATIONS

Feature	Detail
Product Dimensions	17 x 5 x 1.8 inches
Item Weight	1.63 pounds
Item Model Number	SK73-3
Brand	seenda
Color	Purple Green
Connectivity Technology	USB A/C
Special Feature	Full Size, Ergonomic, Round Key
Compatible Devices	Computer, Laptop, Desktop, PC, MacBook Pro, MacBook Air
Keyboard Battery	1x AAA (not included)
Mouse Battery	1x AA (not included)
Standby Time	Up to 90 days (with auto-sleep mode)

8. WARRANTY AND SUPPORT

For warranty information and customer support, please refer to the product packaging or contact seenda customer service directly. Keep your purchase receipt for any warranty claims.
Manufacturer: seenda