

[Manuals.plus](#) /

> [ANCHEER](#) /

> ANCHEER 26" Commuter Electric Bicycle User Manual

## ANCHEER ANCHEER 26" Commuter Electric Bicycle

# ANCHEER 26" Commuter Electric Bicycle User Manual

Model: 48V 500Wh EBike

## INTRODUCTION

---

Welcome to the ANCHEER Electric Bicycle user manual. This guide provides essential information for the safe assembly, operation, and maintenance of your new 26-inch commuter electric bicycle. Please read this manual thoroughly before your first ride to ensure optimal performance and safety. Your ANCHEER e-bike is designed for comfortable and efficient commuting, featuring a powerful 48V 500Wh motor, a long-range removable battery, and a responsive 7-speed gear system.



Figure 1: ANCHEER 26" Commuter Electric Bicycle

## SAFETY INFORMATION

---

Your safety is paramount. Always adhere to local traffic laws and regulations. Wear a helmet and appropriate safety gear when riding. Perform regular safety checks as outlined in the maintenance section.

- Always wear a certified helmet.
- Ensure tires are properly inflated before each ride.
- Check brake functionality and adjust if necessary.
- Familiarize yourself with all controls before riding.
- Do not ride under the influence of alcohol or drugs.
- Avoid riding in adverse weather conditions.
- Keep hands and feet clear of moving parts.

## SETUP AND ASSEMBLY

The following steps detail the assembly process for your ANCHEER electric bicycle. For a visual guide, please refer to the assembly video provided below.

Video 1: ANCHEER Electric Bike Assembly Guide. This video demonstrates the complete assembly process from unboxing to final checks.

## 1. Unboxing and Component Identification

Carefully open the package and remove all components. Verify that all parts listed in the packing list are present. Remove all protective packaging materials from the bike frame and components.

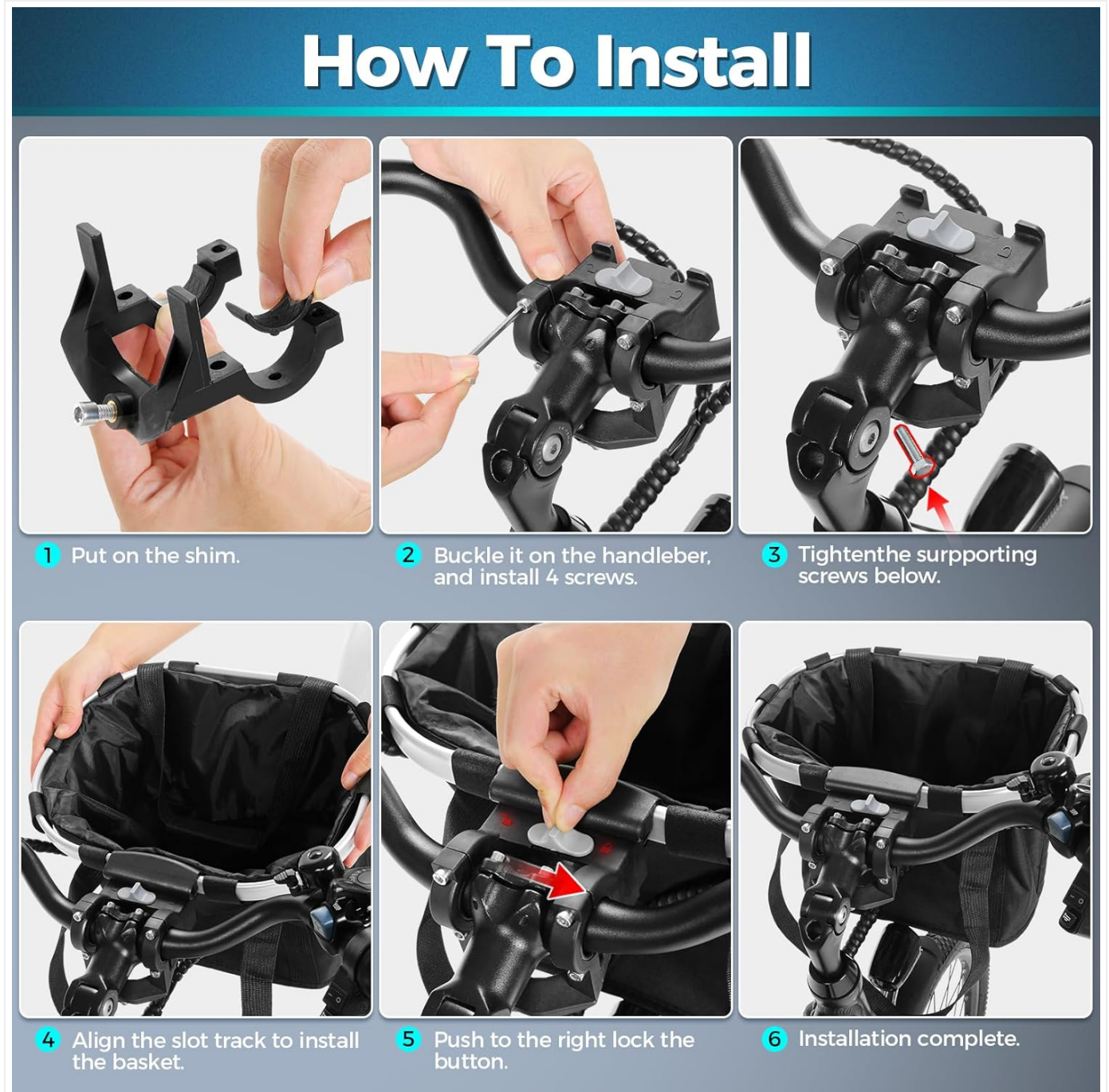


Figure 2: Steps for installing the front basket, including putting on the shim, buckling it on the handlebar, tightening screws, aligning the slot track, and pushing the lock button.

## 2. Handlebar Installation

Insert the handlebar stem into the fork tube. Ensure the stem is aligned with the front wheel. Tighten the bolts securely. **Important:** The adjustment range of the handlebar stem should not exceed the limit line marked on the stem.

## 3. Rear Fender and Rack Installation

Attach the rear fender to the designated mounting points on the frame. Secure it with the provided screws. Then, install the rear rack, ensuring both sides are aligned with the threaded holes before tightening.

#### 4. Controller and Battery Installation

Install the controller onto its mounting plate. Slide the removable battery along its rail on the rear rack until it clicks firmly into place, connecting it to the controller. Ensure the battery is securely locked.

## 48V 10.4AH Battery(No USB)



### ► Power Switch

"O" is power off, "-" is power on. It can be switched off when the e-bike is not in use.

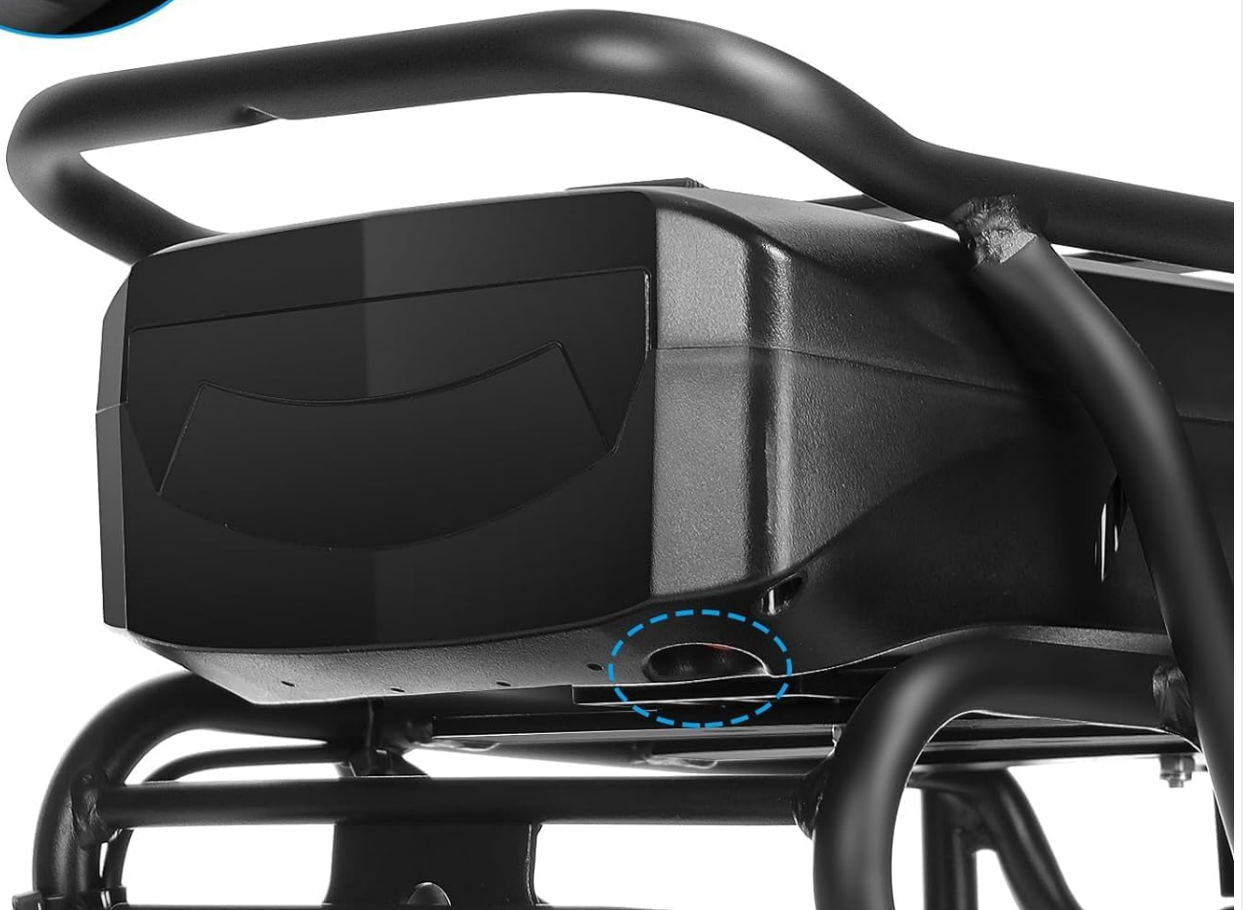


Figure 3: Location of the 48V 10.4AH battery power switch. "O" is power off, "-" is power on. It can be switched off when the e-bike is not in use.

#### 5. Seat Installation

Insert the seat post into the seat tube. Adjust the seat height to a comfortable riding position. **Important:** When adjusting the height of the seat tube, do not exceed the marked safety scale range.

#### 6. Front Wheel Installation

Turn the e-bike upside down, resting it on the compression-resistant foam to protect the handlebars. Remove the long bolt from the fork (it's for protection during shipping and not needed for installation). Unplug the stopper from the front wheel. Carefully align

the front wheel with the fork dropouts and insert the quick-release skewer. Ensure the quick-release is properly installed and tightened. After installation, turn the wheel to ensure smooth rotation; adjust the gap on both sides of the disc brake appropriately if needed.

## **7. Kickstand Installation**

Attach the kickstand to the designated mounting points near the rear wheel. Securely tighten the bolts.

## **8. Headlight and Front Fender Installation**

Mount the headlight to the front fork using the provided hardware. Ensure it is securely fastened and pointed correctly. Then, install the front fender, making sure to use the washers as shown in the diagram for proper spacing and stability.

## **9. Bell and Front Reflector Installation**

Install the bell on the handlebar in an easily accessible position. Attach the front reflector to the handlebar or front fork, ensuring it is visible.

## **10. Pedal Installation**

Identify the left (L) and right (R) pedals. The right pedal screws in clockwise, and the left pedal screws in counter-clockwise. Carefully thread each pedal into its respective crank arm and tighten with a wrench.

# **OPERATING INSTRUCTIONS**

---

## **Powering On Your E-Bike**

To power on your ANCHEER electric bicycle, first turn on the battery power switch located on the battery pack. Then, press and hold the power button on the LCD digital display for a few seconds until the display illuminates.

# Stay Informed In Real-time Ride With Confidence



Figure 4: LCD Digital Display showing battery level, current speed, assist levels, mileage, and cruise control status.

## Riding Modes and Pedal Assist

Your ANCHEER e-bike offers multiple riding modes for a versatile experience:

- **Pure Electric Cruise Mode:** Max 20 MPH.
- **Walk Assist:** Provides low-speed assistance for walking alongside the bike.
- **5 Levels Pedal Assist (PAS Mode):** Provides motor assistance while pedaling, with adjustable levels up to Max 20 MPH. Mode 0 indicates no assistance.
- **Stepless Throttle Mode:** Allows for acceleration without pedaling.
- **Classic Bicycle Mode:** Ride as a traditional bicycle with no electric assistance.

# 4 WORKING MODES + CRUISE CONTROL

Experience The Freedom And Convenience With Personalized Features

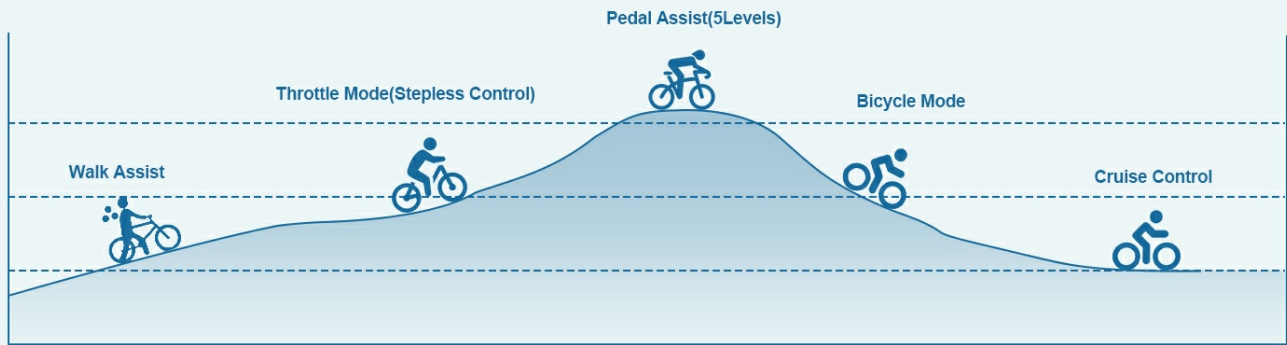


Figure 5: Diagram illustrating the four working modes: Walk Assist, Throttle Mode, Pedal Assist (5 levels), and Bicycle Mode, along with Cruise Control.

## Cruise Control

In pure electric mode, when maintaining a stable speed for 8-10 seconds, the automatic cruise mode is engaged, allowing for effortless riding without continuous throttle input.



Figure 6: Visual representation of the effortless cruise control feature.

## KEY FEATURES AND COMPONENTS

### Battery System

The ANCHEER e-bike is equipped with an advanced 48V/10.4Ah removable battery, providing a remarkable range of up to 60 miles per charge. The lightning-fast charger ensures a quick full charge time of 3-3.5 hours.

**48V/10.4Ah**  
Specification

**45+ MILES**  
Max Range

**3-3.5H**  
Fast Charge

**500Wh**

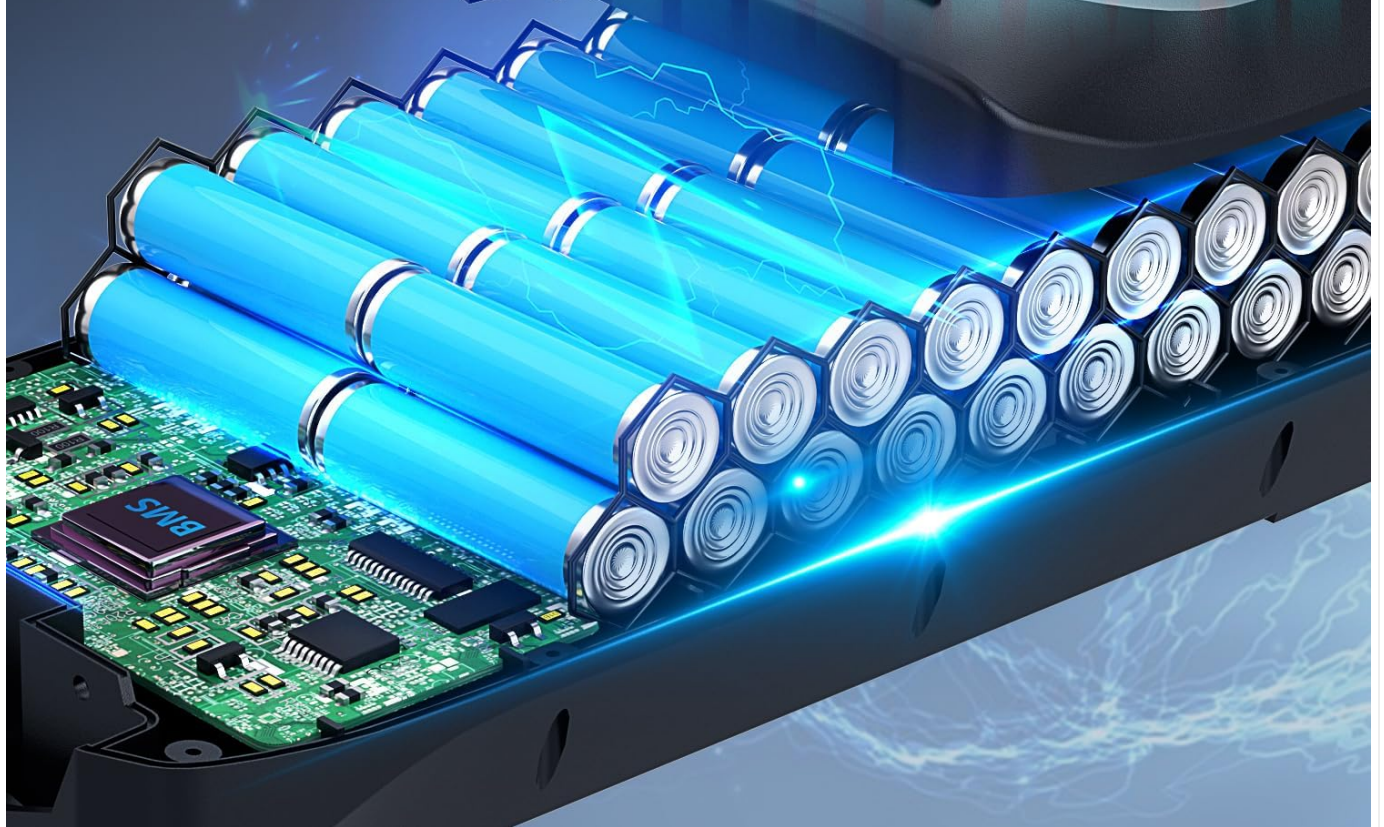


Figure 7: Detailed view of the 48V/10.4Ah battery with 500Wh capacity and fast charging capability.

## Motor

Experience powerful and efficient rides with the 350W brushless motor. This motor provides high speed and low consumption, ensuring a smooth and reliable performance.

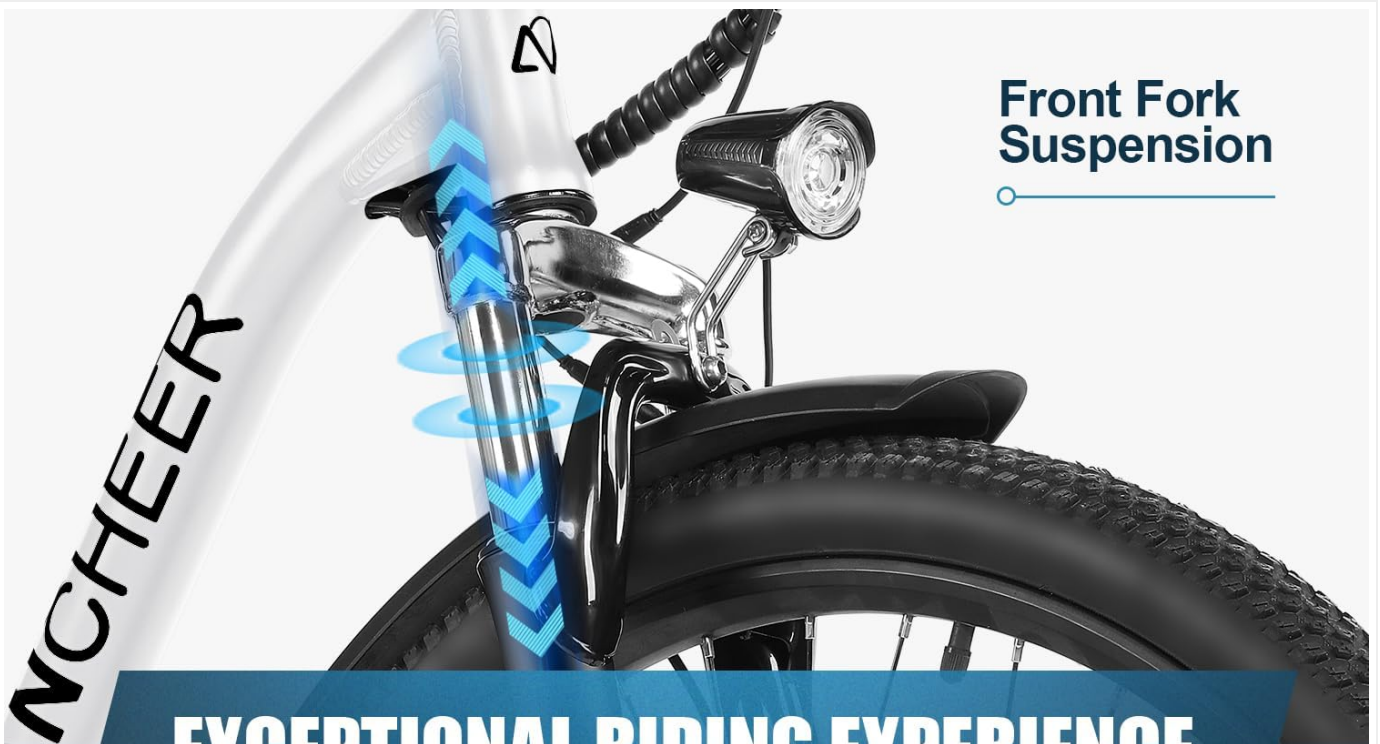


Figure 8: Illustration of the 350W brushless motor, highlighting its 500W peak power, 20mph top speed, and 40N.m torque.

### Suspension and Comfort

The e-bike features a suspension fork and an extra-thick cushion seat with shock absorption springs, providing an exceptional riding experience and reducing fatigue on various terrains.

## Front Fork Suspension



**EXCEPTIONAL RIDING EXPERIENCE**

## Extra-thick Cushion

## Shock Absorption Springs



Figure 9: Close-up of the front fork suspension and the extra-thick cushion seat with shock absorption springs, designed for enhanced comfort.

## Braking System and Gears

Equipped with dual disc brakes for reliable stopping power and a 7-speed gear system for seamless shifting, allowing you to efficiently and freely ride in various conditions.



Figure 10: View of the dual disc brake system and the 7-speed gear shifter for efficient and free riding.

## MAINTENANCE

---

Regular maintenance ensures the longevity and safe operation of your e-bike.

- **Tires:** Check tire pressure weekly. Recommended pressure is usually indicated on the tire sidewall.
- **Brakes:** Inspect brake pads for wear and ensure proper brake lever tension. Adjust as needed.
- **Chain:** Keep the chain clean and lubricated to prevent rust and ensure smooth gear changes.
- **Battery:** Charge the battery regularly, even if not in use, to maintain its health. Store in a cool, dry place.
- **Cleaning:** Clean the bike regularly with a damp cloth. Avoid high-pressure washing directly on electrical components.
- **Fasteners:** Periodically check all bolts and nuts for tightness, especially after the first few rides.

## TROUBLESHOOTING

---

This section addresses common issues you might encounter.

Problem	Possible Cause	Solution
E-bike does not power on	Battery switch off; Battery not charged; Loose connections	Turn on battery switch; Charge battery; Check all electrical connections.
Motor not assisting	PAS level 0; Throttle not engaged; Motor connection issue	Increase PAS level on display; Engage throttle; Check motor cable connection.
Brakes squealing or ineffective	Worn brake pads; Misaligned calipers; Contaminated rotors	Inspect/replace brake pads; Adjust caliper alignment; Clean rotors with disc brake cleaner.
Gears not shifting smoothly	Derailleur misalignment; Dirty chain; Worn chain/cassette	Adjust derailleur; Clean and lubricate chain; Consult a bike mechanic for worn components.

## SPECIFICATIONS

Feature	Specification
Bike Type	Electric Bike
Age Range (Description)	Adult
Brand	ANCHEER
Number of Speeds	7
Color	White
Lithium Battery Energy Content	499 Watt Hours (48V/10.4Ah)
Manufacturer	Shenzhen Vanpowers Intelligent Technology Co., Ltd.
Recommended Height	5'4"-6'5"
Load Capacity Max	265 lbs
Bicycle Weight	Approx. 61 lbs

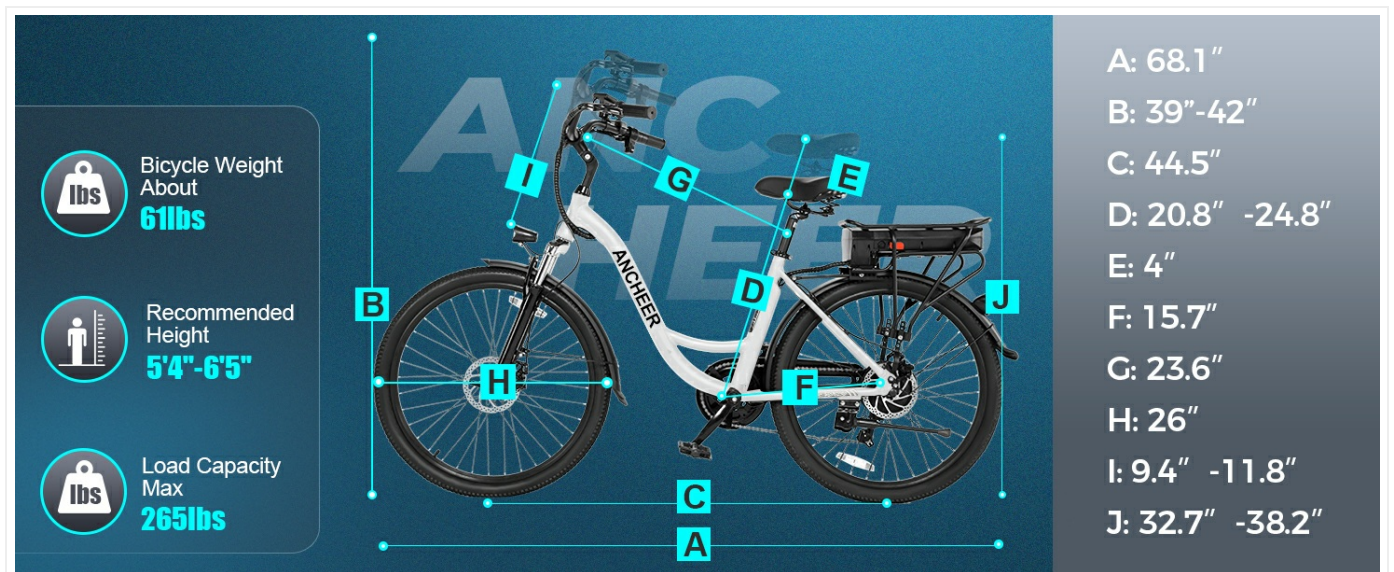


Figure 11: Visual representation of e-bike dimensions and key specifications.

## WARRANTY AND SUPPORT

ANCHEER provides a limited warranty for its electric bicycles. Please refer to the warranty card included with your product for specific terms and conditions. For technical support, troubleshooting assistance, or parts inquiries, please contact ANCHEER Customer Service. Contact information can be found on the official ANCHEER website or your purchase documentation.

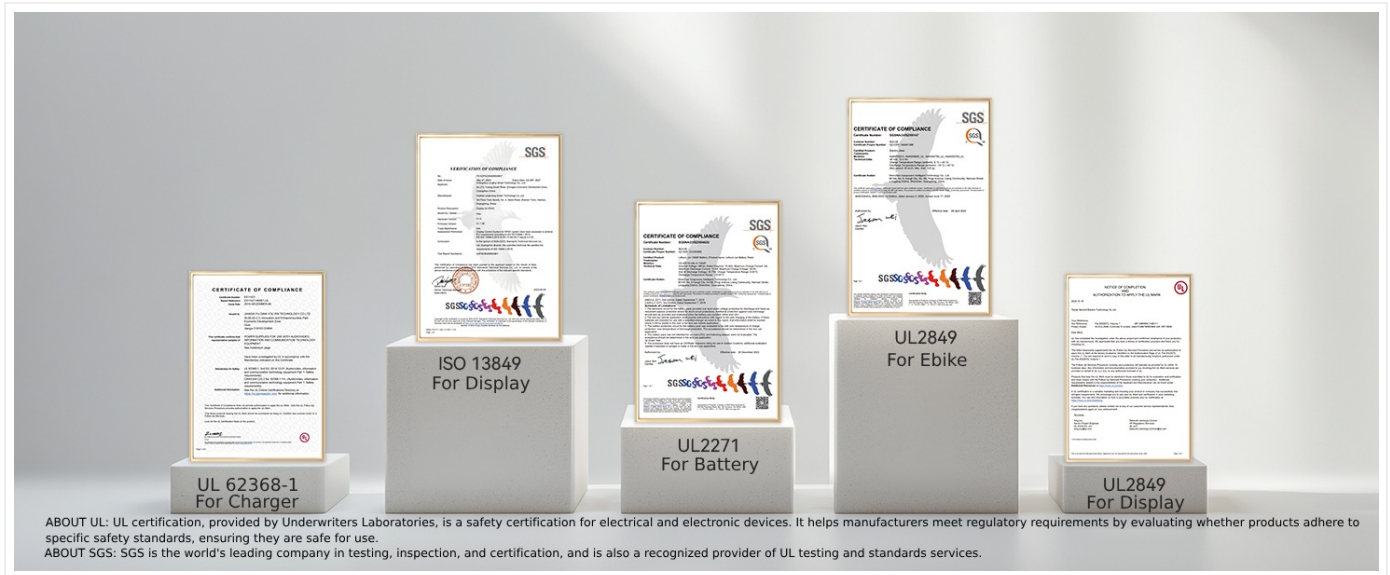


Figure 12: Certifications for the ANCHEER e-bike components, including UL 62368-1 for Charger, ISO 13849 for Display, UL 2271 for Battery, and UL 2849 for Ebike and Display.