

Generic

Generic 5-Tier Metal Storage Cabinet with Rollers - User Manual

Model: 60 x 32 x 154 cm (Grey)

1. INTRODUCTION

This manual provides detailed instructions for the assembly, operation, and maintenance of your new Generic 5-Tier Metal Storage Cabinet. Please read this manual carefully before assembly and use to ensure safe and efficient operation. Keep this manual for future reference.

2. PRODUCT OVERVIEW

The Generic 5-Tier Metal Storage Cabinet is a versatile and robust storage solution designed for various spaces such as kitchens, living rooms, entryways, and dining areas. It features a durable metal frame, five spacious tiers, and translucent flip-up doors to protect contents from dust.

Flip Doors Save Space

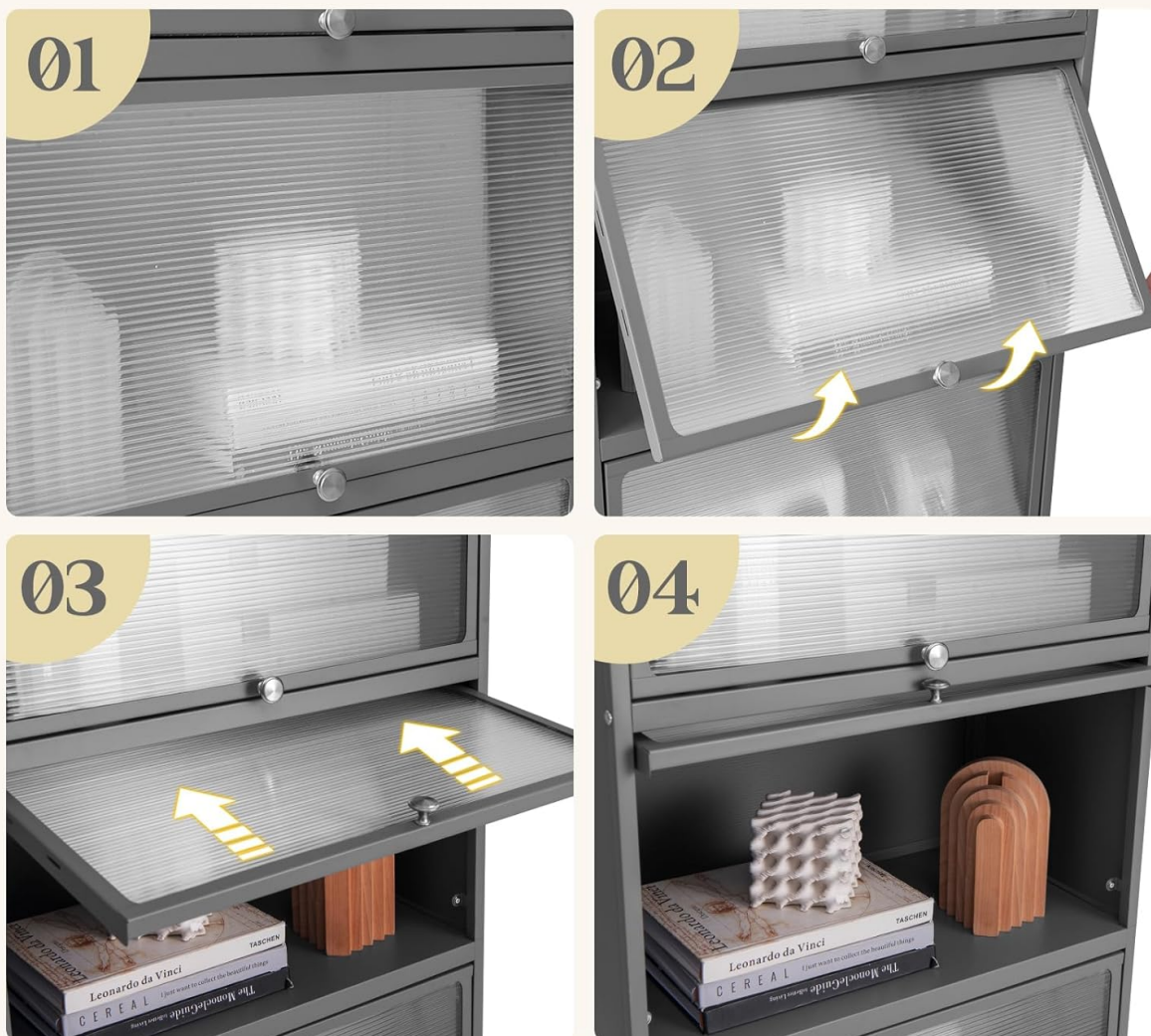


Image 2.1: The 5-Tier Metal Storage Cabinet in a kitchen environment, showcasing its design and storage capacity. The top door is open, revealing stored items.

Key Features:

- **5-Tier Storage:** Provides ample space with a wide top and four large shelves for organizing various items.
- **Translucent Flip-Up Doors:** Each shelf includes a dust-proof door that opens upwards, offering quick access and protecting contents.
- **Mobility:** Equipped with four universal casters, two of which are lockable, for easy movement and stable positioning.
- **Durable Construction:** Made from waterproof polycarbonate and powder-coated metal for long-lasting use.
- **Safety Features:** Includes two anti-tipping devices for secure wall attachment.
- **Versatile Use:** Suitable as a microwave stand, bookshelf, display shelf, or general utility storage.

3. SPECIFICATIONS



Image 3.1: Detailed dimension diagram of the storage cabinet, illustrating overall height, width, depth, and individual shelf dimensions.

| Feature | Detail |
|-----------------------------------|--|
| Brand | Generic |
| Model Number | Generic |
| Color | Grey |
| Overall Dimensions (L x W x H) | 60 x 32 x 154 cm |
| Each Level Dimensions (L x W x H) | 57 x 31 x 29 cm |
| Net Weight | 13 kg |
| Total Weight Capacity | 75 kg |
| Weight Capacity per Level | 15 kg |
| Materials | Metal, PC (Polycarbonate), Polypropylene |

| Feature | Detail |
|-----------------|-------------------------------------|
| Casters | 4 universal casters (2 with brakes) |
| Safety Features | 2 Anti-tipping devices |

4. SETUP AND ASSEMBLY

The cabinet requires assembly. Please ensure all parts are present before beginning. Detailed instructions are provided in the package. Follow the steps carefully for a hassle-free assembly.

4.1 Unpacking and Part Identification

Carefully unpack all components. Verify that all parts listed in the included instruction manual are present and undamaged. If any parts are missing or damaged, do not proceed with assembly and contact customer support.

4.2 Assembly Steps

- 1. Frame Assembly:** Assemble the main metal frame according to the diagrams in your instruction manual. Ensure all connections are secure.
- 2. Shelf Installation:** Install the five shelves into the frame.
- 3. Door Attachment:** Attach the translucent flip-up doors to each shelf. Ensure they open and close smoothly.



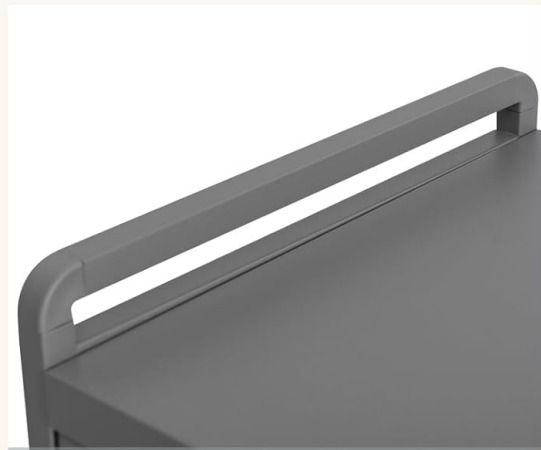
Translucent Doors



Exquisite Silver Knobs



Magnetic Door Catches



Raised Guardrail

Image 4.1: Illustration of the flip-up door operation, showing how the door lifts and slides back into the cabinet to save space.

4. **Caster/Foot Pad Installation:** Attach the universal casters to the base of the cabinet. Alternatively, replaceable foot pads can be installed for stationary use.

2 Anti-tipping Kits



Image 4.2: Detail of the 360° swiveling casters, including two with brakes, and the option for replaceable foot pads for stability.

5. **Anti-Tipping Device Installation:** For safety, install the two anti-tipping devices to secure the cabinet to a wall. This is crucial to prevent accidental tipping, especially in households with children or pets.



Study Room



Entryway



Dining Room



Living Room

Image 4.3: Visual guide for installing the anti-tipping kits, showing how to secure the cabinet to the wall to prevent accidents.

Safety Warning: Always install the anti-tipping devices to prevent serious injury from tipping furniture.

5. OPERATING INSTRUCTIONS

5.1 Using the Flip-Up Doors

Each shelf is equipped with a translucent flip-up door. To open, gently pull the metal knob upwards and then push the door inwards and upwards until it slides into the cabinet. To close, pull the door downwards and outwards until it aligns with the front of the cabinet, then push it gently to engage the magnetic latch.

Dimensions



Image 5.1: Detailed view of the translucent doors, exquisite silver knobs, magnetic door catches, and the raised guardrail on the top surface.

5.2 Moving the Cabinet

If your cabinet is equipped with casters:

- **To Move:** Ensure the brakes on the two lockable casters are disengaged. Gently push the cabinet to its desired location.
- **To Secure:** Once in position, engage the brakes on the two lockable casters to prevent unintended movement.

If using the replaceable foot pads, the cabinet is intended for stationary use and should not be moved frequently without lifting.

5.3 Loading the Cabinet

Distribute weight evenly across the shelves. Do not exceed the maximum weight capacity of 15 kg per shelf or 75 kg total for the entire cabinet. Place heavier items on lower shelves for better stability.

6. MAINTENANCE

6.1 Cleaning

Wipe the cabinet surfaces with a soft, damp cloth. Avoid using abrasive cleaners or harsh chemicals, as these can damage the finish and materials. For stubborn stains, a mild soap solution can be used, followed by wiping with a clean, dry cloth.

6.2 Inspection

Periodically check all screws and connections to ensure they remain tight. Re-tighten if necessary. Inspect the casters (if installed) for smooth operation and ensure the brakes function correctly. Verify that the anti-tipping devices are securely attached to both the cabinet and the wall.

7. TROUBLESHOOTING

7.1 Cabinet Wobbles

- Ensure all assembly screws are tightened.
- Verify the cabinet is on a level surface.
- Confirm the anti-tipping devices are properly installed and secured to the wall.
- If using foot pads, adjust them to compensate for uneven flooring.

7.2 Doors Not Closing Properly

- Check for any obstructions preventing the door from fully closing.
- Ensure the magnetic catches are aligned and functioning.
- Verify the door hinges are correctly installed and not damaged.

7.3 Casters Not Rolling Smoothly

- Check for debris (hair, dust) caught in the caster wheels. Clean if necessary.
- Ensure the caster brakes are fully disengaged.

8. WARRANTY AND SUPPORT

Information regarding specific warranty terms is not available in this manual. For warranty claims, missing parts, or further assistance, please refer to the contact information provided at your point of purchase or the manufacturer's official website.

Spare parts availability information is currently unavailable.

9. USAGE SCENARIOS

The versatile design of this storage cabinet allows it to be integrated into various rooms and serve multiple purposes:

- **Kitchen:** Ideal for storing small appliances, dishes, pantry items, and cookbooks.
- **Living Room:** Can function as a display shelf for decorative items, books, or media.
- **Dining Room:** Useful for storing dinnerware, serving accessories, or linens.
- **Entryway:** Provides convenient storage for shoes, bags, or other entryway essentials.
- **Study Room:** Suitable for organizing office supplies, files, or books.



Image 9.1: Examples of the cabinet's versatility, showing it used in a study, entryway, dining room, and living room.