

## Manuals+

[Q & A](#) | [Deep Search](#) | [Upload](#)

[manuals.plus](#) /

› [Brvaiuen](#) /

› [Brvaiuen F11 11-inch Android 14 Tablet User Manual](#)

## Brvaiuen F11

# Brvaiuen F11 11-inch Android 14 Tablet User Manual

Model: F11

## 1. INTRODUCTION

This manual provides essential information for the proper setup, operation, and maintenance of your Brvaiuen F11 11-inch Android 14 Tablet. Please read this guide thoroughly before using your device to ensure optimal performance and longevity.

## 2. PACKAGE CONTENTS

Verify that all items are present in the package:

- 1 x Brvaiuen F11 Android 14 Tablet
- 1 x Keyboard
- 1 x Protective Case
- 1 x Capacitive Pen (Stylus)
- 1 x Power Adapter
- 1 x USB Type-C Cable
- 1 x SIM Ejector Tool
- 1 x Screen Protector (pre-applied or included)

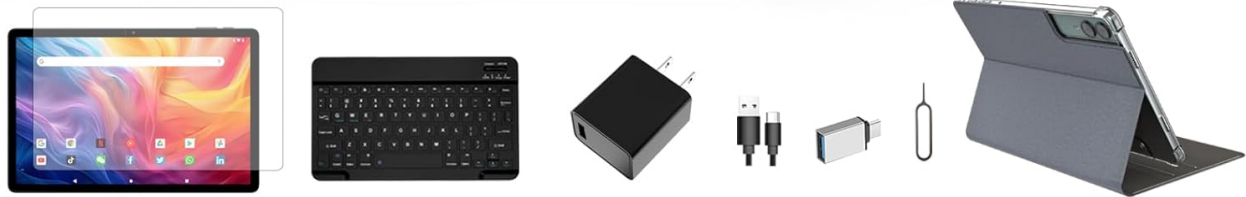


Image: Brvaiuen F11 Tablet with its accessories, including keyboard, case, stylus, charger, and cables.

### 3. DEVICE OVERVIEW

Familiarize yourself with the physical components of your Brvaiuen F11 tablet.



Image: Front view of the Brvaiuen F11 Tablet with the detachable keyboard and stylus, showcasing the 11-inch display and rear camera module.

## Key Features:

- **Display:** 11-inch 2K Full HD IPS screen (2000x1200 resolution) with ultra-slim 7.6mm bezels.
- **Processor:** Octa-core T616 processor (2.0GHz).
- **Memory & Storage:** 18GB RAM (6GB physical + 12GB virtual), 128GB internal storage, expandable up to 1TB via microSD.
- **Cameras:** 13MP rear camera with autofocus, 5MP secondary rear camera, 5MP front camera with AI Face Unlock.
- **Audio:** Quad-speaker stereo system with smart amplifier.
- **Battery:** 9000mAh polymer lithium battery with Type-C 3.0 fast-charging.
- **Connectivity:** Dual-band 5G+2.4G WiFi, Bluetooth 5.0, GPS, A-GPS.
- **Operating System:** Android 14.
- **Design:** Lightweight 475g, 7mm metal body.

## 4. SETUP

### 4.1 Initial Power On and Setup Wizard

1. **Charge the Tablet:** Before first use, connect the tablet to the power adapter using the provided USB Type-C cable and charge it fully.

2. **Power On:** Press and hold the power button located on the side of the tablet until the Brvaiuen logo appears.
3. **Follow On-Screen Prompts:** The Android 14 setup wizard will guide you through selecting your language, connecting to Wi-Fi, setting up your Google account, and configuring basic settings.

## 4.2 Attaching the Keyboard and Using the Stylus

- **Keyboard:** Align the magnetic connectors of the keyboard with the corresponding ports on the tablet. The keyboard will snap into place. No additional pairing is typically required for direct magnetic connection keyboards.
- **Stylus:** The capacitive pen is ready for use upon removal from its packaging. It can be used for precise input, drawing, or navigation on the touchscreen.

## 5. OPERATING INSTRUCTIONS

### 5.1 Basic Navigation

- **Touch Gestures:** Swipe, tap, pinch-to-zoom, and long-press are standard Android gestures for navigating the interface.
- **Home Screen:** Access your apps, widgets, and notifications.
- **Notifications Panel:** Swipe down from the top of the screen to view notifications and quick settings.

### 5.2 Connectivity

- **Wi-Fi:** Go to **Settings > Network & internet > Wi-Fi**. Select your desired network and enter the password if prompted. The tablet supports dual-band 2.4G and 5G Wi-Fi for faster speeds.
- **Bluetooth:** Go to **Settings > Connected devices > Connection preferences > Bluetooth**. Toggle Bluetooth on and select a device from the available list to pair.
- **GPS:** Location services are enabled by default. For precise navigation, ensure GPS is active in quick settings or **Settings > Location**.

## Hear the Music, Feel the Impact

Experience immersive sound with four stereo speakers, enhanced by a powerful 3W SmartK amplifier chip, delivering superior audio quality for an enjoyable listening experience.



Four Stereo Speakers



3W High-Power / SmartK Amplifier



Image: Illustration depicting the tablet's connectivity features, including dual-band Wi-Fi and Bluetooth 5.0, enabling connection to various devices and networks.

### 5.3 Camera Usage

The tablet features a 13MP rear camera, a 5MP secondary rear camera, and a 5MP front camera.

1. **Open Camera App:** Tap the Camera icon on your home screen or app drawer.

2. **Switch Cameras:** Use the camera switch icon to toggle between the front and rear cameras.
3. **Capture Photos/Videos:** Tap the shutter button to take a photo or record a video.
4. **AI Features:** The rear camera system includes AI scene recognition for optimized image quality.



Image: Detailed view of the tablet's triple camera system, highlighting the 13MP autofocus rear camera, 5MP AI secondary camera, and 5MP front camera with AI Face Unlock capabilities.

## 5.4 Storage Management

The tablet comes with 128GB of internal storage, expandable up to 1TB using a microSD card.

- **Insert MicroSD Card:** Locate the SIM/microSD card tray on the side of the tablet. Use the provided ejector tool to open the tray and insert the microSD card.
- **Manage Storage:** Go to **Settings > Storage** to view storage usage and manage files.

## Slim and Spacious, All in One

This tablet features a new generation of straight-edged metal design. The elegant gray and green color highlights its sophistication and modernity.



Image: Visual representation of the tablet's storage capabilities, featuring 128GB high-speed internal storage and support for up to 1TB microSD card expansion.

## 5.5 Battery Management

The 9000mAh battery supports Type-C 3.0 fast-charging.

- **Charging:** Use the provided charger and cable for optimal charging speed.
- **Battery Optimization:** Access **Settings > Battery** to monitor usage, enable battery saver mode, or optimize app power consumption.

# Ultra-large Battery, Fast Charging

*This tablet features a 9000mAh polymer lithium battery, optimized for internal space without adding thickness. With 15W fast charging, it delivers longer battery life and faster charging.*



**9000mAh**

High-capacity lithium battery



**15W**

Fast Charging



**6 hours**

of video playback



**57.1 hours**

of standby time



**69.14 hours**

of podcast listening



Image: The Brvaiuen F11 Tablet connected to a charger, illustrating its 9000mAh battery and 15W fast charging capability, with estimated usage times for video playback, standby, and podcast listening.

## 5.6 AI Face Unlock

For secure and convenient access, configure AI Face Unlock:

1. Go to **Settings > Security & privacy > Device unlock > Face unlock**
2. Follow the on-screen instructions to register your face.
3. Ensure good lighting conditions during registration for best performance.

## 6. MAINTENANCE

- **Cleaning:** Use a soft, lint-free cloth to clean the screen and body of the tablet. Avoid abrasive materials or harsh chemicals.
- **Software Updates:** Regularly check for and install system updates via **Settings > System > System update** to ensure optimal performance and security.
- **Storage Optimization:** Periodically clear unnecessary files and cache to maintain system speed.
- **Battery Care:** Avoid extreme temperatures. Do not leave the tablet fully charged or fully discharged for extended periods.

## 7. TROUBLESHOOTING

### 7.1 Tablet Not Powering On

- Ensure the tablet is sufficiently charged. Connect it to the charger for at least 30 minutes.
- Try holding the power button for 10-15 seconds to force a restart.

### 7.2 Wi-Fi Connectivity Issues

- Restart your Wi-Fi router and the tablet.
- Forget the network in **Settings > Network & internet > Wi-Fi** and reconnect.
- Ensure you are within range of the Wi-Fi signal.

### 7.3 Slow Performance

- Close unused applications running in the background.
- Clear cache data for frequently used apps.
- Check available storage. If storage is nearly full, consider deleting unnecessary files or moving them to a microSD card.
- Restart the tablet.

### 7.4 Keyboard Not Responding

- Ensure the keyboard is securely attached to the tablet's magnetic connectors.
- Clean the magnetic connectors on both the tablet and the keyboard to ensure good contact.
- Restart the tablet.

## 8. SPECIFICATIONS

Feature	Detail
Model	Brvaiuen F11
Operating System	Android 14
Processor	Unisoc T616 Octa-Core (2.0GHz)
Display	11-inch IPS, 2000x1200 (2K) Resolution
RAM	18GB (6GB physical + 12GB virtual DDR4 SDRAM)
Internal Storage	128GB eMMC
Expandable Storage	Up to 1TB via MicroSD card
Rear Camera	13MP (main) + 5MP (secondary AI)
Front Camera	5MP (with AI Face Unlock)
Battery	9000mAh Polymer Lithium, Type-C 3.0 Fast Charging
Audio	Quad Stereo Speakers with Smart Amplifier

Feature	Detail
Connectivity	Dual-band 2.4G/5G Wi-Fi (802.11ac), Bluetooth 5.0, GPS, A-GPS
Dimensions (LxWxH)	11 x 7 x 0.4 inches (27.94 x 17.78 x 1.02 cm)
Weight	2.94 pounds (1.33 kg) / Tablet only: 475g (1.05 lbs)
Color	Green (as per current product variant)



Image: A visual summary of the Brvaiuen F11 Tablet's core specifications, including Android 14, 2K display, T616 processor, RAM, storage, battery, cameras, and connectivity options.

## 9. WARRANTY AND SUPPORT

For warranty information and technical support, please refer to the documentation included with your purchase or visit the official Brvaiuen website. Keep your proof of purchase for warranty claims.

For further assistance, you may contact Brvaiuen customer service through their official channels.

Note: Specific warranty terms and support contact details may vary by region and purchase date. Always consult the most current information provided by the manufacturer.

