

Manuals+

[Q & A](#) | [Deep Search](#) | [Upload](#)

manuals.plus /

› [ASD](#) /

› [ASD 8 Inch LED Indoor Wall Sconce User Manual](#)

ASD A-LWS12-8D10AC-BK

ASD 8 Inch LED Indoor Wall Sconce User Manual

Brand: ASD | Model: A-LWS12-8D10AC-BK

INTRODUCTION

Thank you for choosing the ASD 8 Inch LED Indoor Wall Sconce. This manual provides detailed instructions for the safe installation, operation, and maintenance of your new lighting fixture. Please read all instructions carefully before beginning installation and retain this manual for future reference.



Image: The ASD 8 Inch LED Indoor Wall Sconce, showcasing its modern design and matte black finish.

SAFETY INFORMATION

To reduce the risk of death, personal injury, or property damage from fire, electric shock, falling parts, cuts/abrasions, and other hazards, please read all warnings and instructions included with and on the fixture box and all fixture labels.

- Installation must be performed by a qualified electrician in accordance with the National Electrical Code and local codes.
- Always turn off power at the circuit breaker before installation, removal, or servicing.
- Ensure all electrical connections are secure and properly insulated.
- Do not install in wet locations. This fixture is rated for damp locations only.
- Do not modify the fixture or use it for purposes other than its intended use.

PRODUCT FEATURES

The ASD LED Indoor Wall Sconce is designed with advanced features for optimal performance and aesthetic appeal:

- **Modern Design:** Combines stylish aesthetics with efficient lighting, featuring a durable housing resistant to rust and impact.
- **Color Selectable (5CCT):** Offers five color temperature options (2700K Soft White, 3000K Warm White, 3500K Neutral White, 4000K Cool White, 5000K Daylight) adjustable via a simple switch.
- **Dimmable:** Smooth Triac dimming from 10% to 100% allows for adjustable brightness and energy saving. Compatible with modern LED dimmers.
- **Acrylic Lens:** Provides a 215° beam angle for perfectly even light distribution.
- **Damp Locations Rated:** Suitable for use in areas with moderate moisture.



Image: Visual representation of the sconce's key features, including its durable housing and acrylic lens.

INSTALLATION INSTRUCTIONS

Follow these steps for proper installation of your wall sconce. Ensure power is OFF at the circuit breaker before starting.

1. **Prepare Fixture:** Unscrew the two fixture screws from both sides of the wall sconce. Remove the mounting plate and attach it to the existing outlet box using two mounting screws.
2. **Select Color Temperature:** Before connecting wires, choose your preferred color temperature (2700K, 3000K, 3500K, 4000K, or 5000K) by adjusting the switch position located on the fixture.
3. **Connect Wires:** Connect the wires: Black to Black, White to White, and Green to Green (ground). Secure each connection with wire nuts.
4. **Mount Fixture:** Fix the wall sconce to the mounting plate using the two fixture screws on both sides. Before tightening the screws, align the holes of both the fixture and the mounting plate to ensure a solid fit.

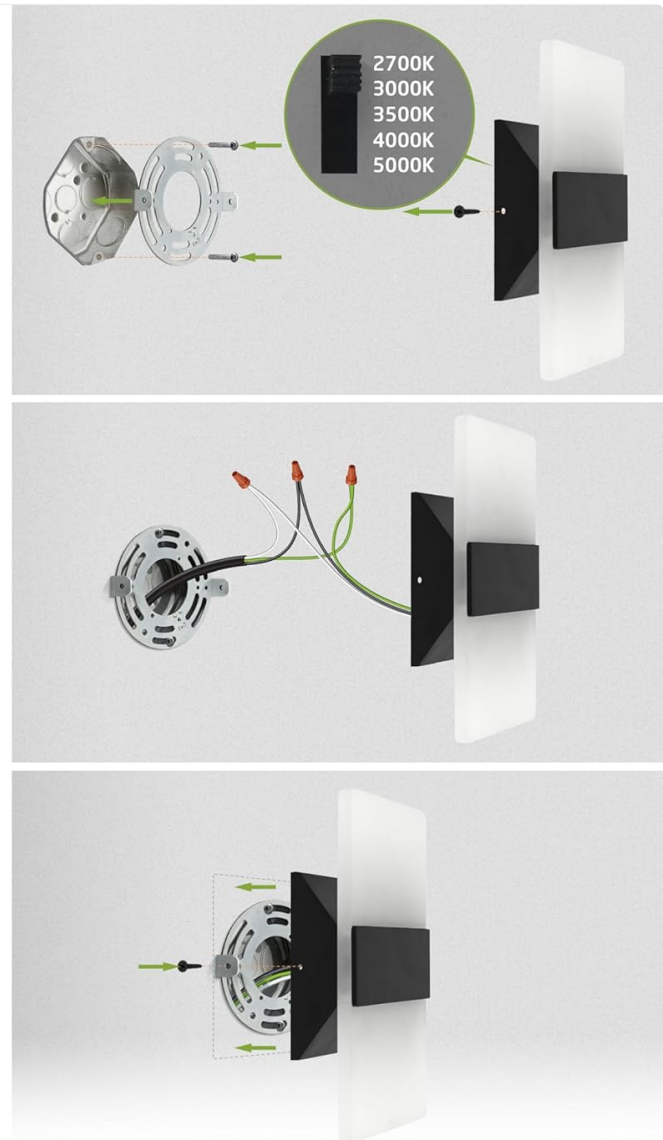
1. Unscrew the two fixture screws from both sides of the wall sconce. Remove the mounting plate and attach it to the existing outlet box using two mounting screws. Choose preferred color temperature by adjusting the switch position

2. Connect the wires: Black to Black, White to White, Green to Green. Secure the connection with wire nuts.

3. Fix the wall sconce to the mounting plate using two fixture screws on both sides. Before tightening the screws, align the holes of both the fixture and the mounting plate to ensure a solid fit.



Follow the QR code below for a full cut sheet.



INSTALLATION

Image: Detailed visual guide for the installation process of the wall sconce.

[Download Full Installation Guide \(PDF\)](#)

OPERATING INSTRUCTIONS

Color Temperature Selection

The wall sconce features a 5CCT (Correlated Color Temperature) switch, allowing you to select from five different light temperatures to suit your preference or room ambiance. This switch is located on the fixture and should be set during installation before final mounting.

- **2700K:** Soft White, ideal for a warm, cozy atmosphere.
- **3000K:** Warm White, slightly brighter than soft white, good for living spaces.
- **3500K:** Neutral White, a balanced white light suitable for most general applications.
- **4000K:** Cool White, a brighter, more invigorating light, often used in kitchens or offices.
- **5000K:** Daylight, a very bright, crisp white light, mimicking natural daylight.



Image: Visual guide to the five selectable color temperature options.

Dimming Function

This fixture is designed for smooth Triac dimming, allowing you to adjust the light output from 10% to 100%. To utilize this feature, ensure you are using a compatible LED dimmer switch (not included) with your electrical system.

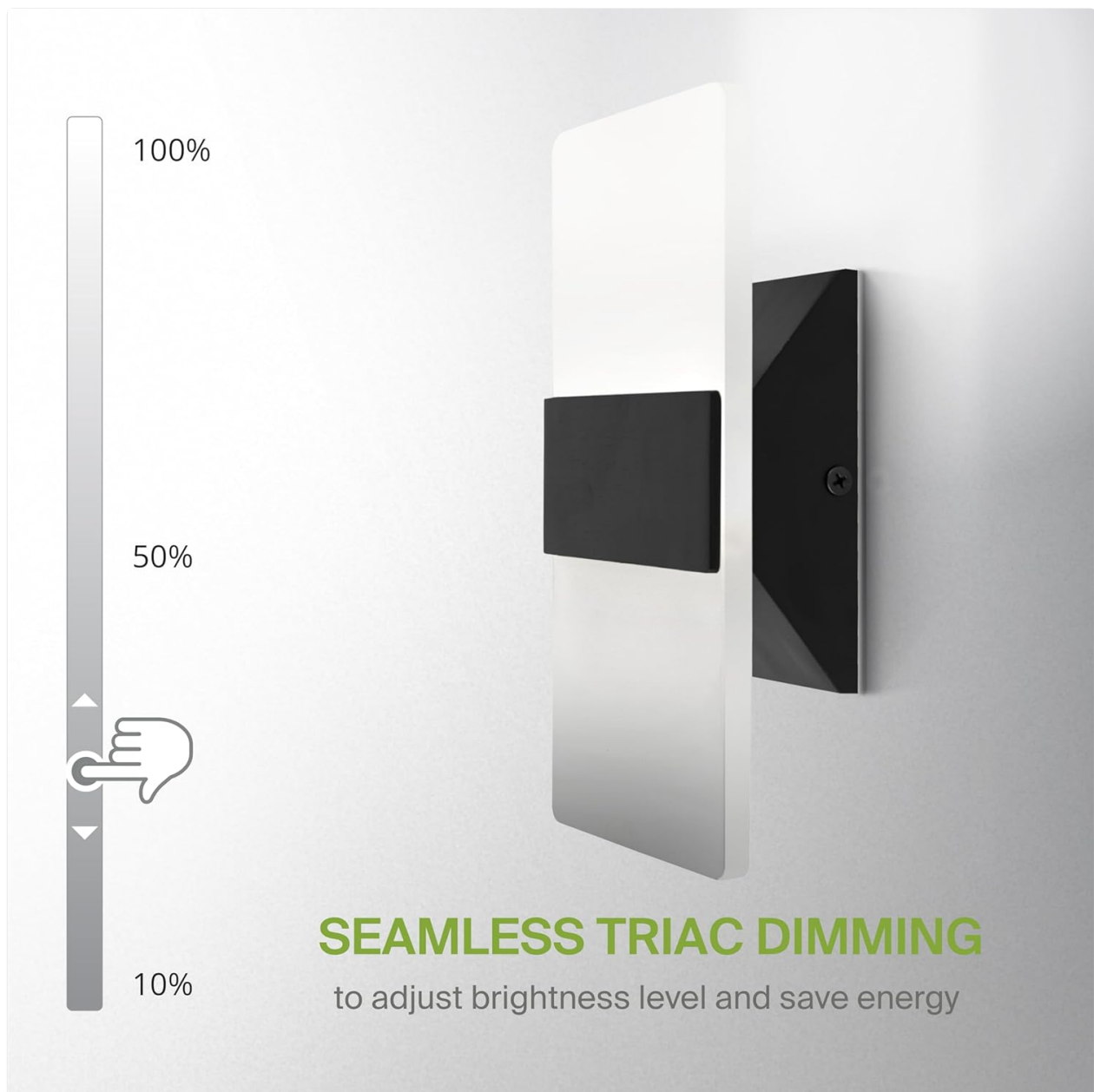


Image: Illustration of the seamless dimming capability of the sconce.

MAINTENANCE

The ASD LED Indoor Wall Sconce requires minimal maintenance. Follow these guidelines to ensure its longevity and optimal performance:

- **Cleaning:** Turn off power before cleaning. Use a soft, dry, or slightly damp cloth to wipe the fixture. Do not use abrasive cleaners, solvents, or polishes as they may damage the finish or acrylic lens.
- **Inspection:** Periodically check for any loose connections or signs of wear. If any issues are found, consult a qualified electrician.
- **LED Longevity:** The integrated LED light source is designed for a long lifespan (up to 54,000 hours). It is not user-replaceable.

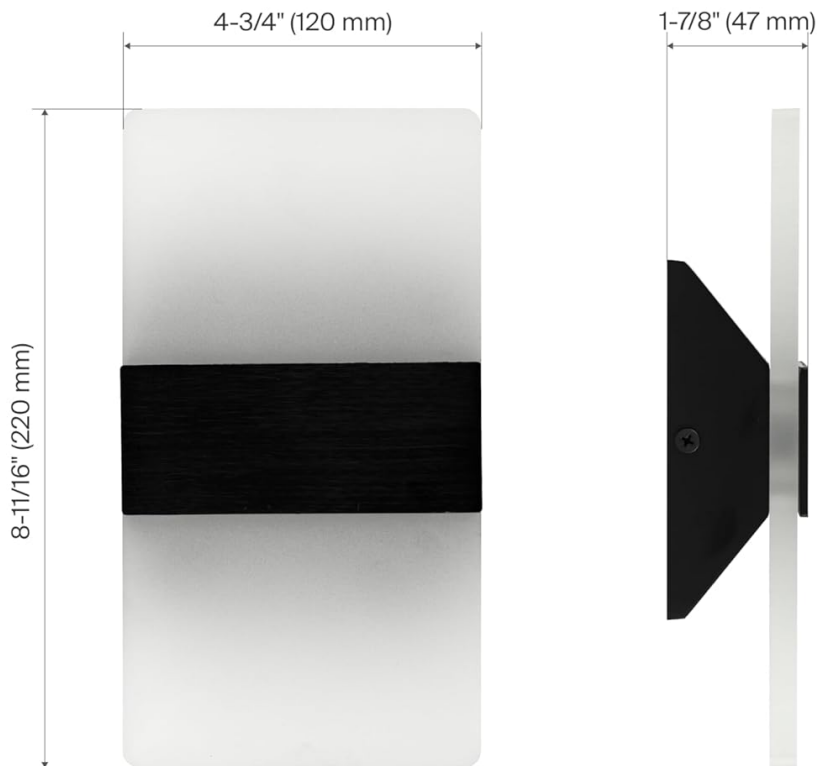
TROUBLESHOOTING

If you experience issues with your wall sconce, refer to the following common problems and solutions:

Problem	Possible Cause	Solution
Light does not turn on.	No power to the fixture. Loose wire connection. Faulty switch or dimmer.	Check circuit breaker. Verify all wire connections are secure (ensure power is off). Test switch/dimmer or replace if necessary.
Light flickers or dims inconsistently.	Incompatible dimmer switch. Loose wire connection. Overloaded circuit.	Ensure dimmer is LED compatible (Triac). Check wire connections. Reduce load on the circuit or consult an electrician.
Light output is too low or too high.	Dimmer setting. Incorrect color temperature selected.	Adjust dimmer to desired brightness. Verify the 5CCT switch is set to the preferred color temperature.
Fixture is hot to the touch.	Normal operation (LEDs generate some heat). Improper ventilation.	Ensure fixture is installed in an open area with adequate airflow. If excessively hot, turn off power and consult an electrician.

PRODUCT SPECIFICATIONS

PRODUCT SPECIFICATION



10W
Power

5CCT
Color Temperature

611lm
Brightness

BLACK
Finish

Image: Detailed product specifications including dimensions and electrical ratings.

Specification	Detail
Brand	ASD
Model Name	LWS-12
Item Model Number	A-LWS12-8D10AC-BK
Color	8 Inch - Matte Black
Material	Durable Alloy Aluminum, Frosted Acrylic Glass
Style	Contemporary
Product Dimensions (L x W x H)	4.75" x 1.8" x 8.69" (120mm x 47mm x 220mm)
Item Weight	1.43 pounds
Power Source	Hardwired

Specification	Detail
Voltage	120 Volts
Wattage	10 watts
Brightness	611 Lumens
Light Color	Adjustable (2700K, 3000K, 3500K, 4000K, 5000K)
Color Rendering Index (CRI)	80.00
Average Life	54,000 Hours
Indoor/Outdoor Usage	Indoor use only
Water Resistance Level	Not Water Resistant (Damp Locations Rated)
UPC	810128118071

WARRANTY AND SUPPORT

ASD provides a **5-year limited warranty** for this product, ensuring top quality and safety. This warranty covers defects in materials and workmanship under normal use and service.



ASD PRODUCTS ARE COVERED FOR 5 YEAR,
AND COME WITH ETL CERTIFICATION,
ENSURING TOP QUALITY AND SAFETY!



AMERICAN
COMPANY



EXCEPTIONAL
CUSTOMER
SERVICE









Image: ASD product quality assurance and warranty information.

For warranty claims, technical assistance, or any questions regarding your ASD LED Indoor Wall Sconce, please contact ASD customer service. Refer to your purchase documentation for specific contact details or visit the official ASD website.

© 2025 ASD. All rights reserved.

Related Documents - A-LWS12-8D10AC-BK

	<p>ASD LED Wall Sconce Modern Design, Color Selectable, Dimmable Lighting</p> <p>Explore the ASD LED Wall Sconce (Model ASD-LWS-11-D15CC series) for modern, energy-efficient lighting. Features color-selectable CCT, TRIAC dimming, 50,000-hour lifespan, ETL & Energy Star certification.</p>
	<p>ASD LED Outdoor Wall Sconce: Modern, Color Selectable, Photocell Lighting</p> <p>Explore the ASD LED Outdoor Wall Sconce, featuring a modern design, clear seeded glass, 180° beam angle, and triac dimming. Offers color-selectable CCT (3000K/4000K/5000K) and a built-in dusk-to-dawn photocell. Rated for Wet Locations, durable, with a 50,000-hour lifespan and 5-year warranty. ETL certified.</p>
	<p>ASD LED Downlight Retrofit Kit: Color Selectable, Dimmable, Energy Efficient Lighting</p> <p>Discover the ASD LED Downlight Retrofit Kit, featuring classic design, 5CCT color selectable options, smooth dimming, and easy installation. Ideal for wet locations, with a 50,000-hour lifespan and UL certification. Explore specifications and ordering information.</p>
	<p>ASD LED Trimless Downlight - Product Specifications, Installation, and Ordering Guide</p> <p>Comprehensive guide to ASD LED Trimless Downlights, covering product features, detailed specifications, installation instructions, and ordering information. Features include color-selectable CCT, high CRI, IC and Wet Location ratings, and long lifespan.</p>
	<p>ASD LED Linear High Bay with Q-Base: Specifications and Installation Guide</p> <p>Comprehensive guide to ASD's LED Linear High Bay with Q-Base, detailing product specifications, features, installation instructions, and ordering information. Covers energy efficiency, selectable power and color temperature, motion sensor options, and battery backup.</p>
	<p>ASD LED Round Downlight with Junction Box - Product Specifications and Installation Guide</p> <p>Detailed specifications, features, and installation instructions for the ASD LED Round Downlight with Junction Box. Learn about its design, energy efficiency, certifications, and ordering information.</p>