

Manuals.plus /

- › OUTDOOR EXPERT /
- › OUTDOOR EXPERT Mini Trail Camera User Manual

OUTDOOR EXPERT ODE-Mini-B

OUTDOOR EXPERT Mini Trail Camera User Manual

MODEL: ODE-MINI-B

Introduction

Thank you for choosing the OUTDOOR EXPERT Mini Trail Camera. This compact and robust device is designed for capturing high-quality images and videos of wildlife, as well as for outdoor security and farm surveillance. Featuring 20MP image resolution, 1080P HD video, No Glow 940nm night vision, and IP66 waterproofing, it is built to perform reliably in various environments.

Product Overview



Figure 1: Two OUTDOOR EXPERT Mini Trail Cameras, demonstrating their compact and portable design.

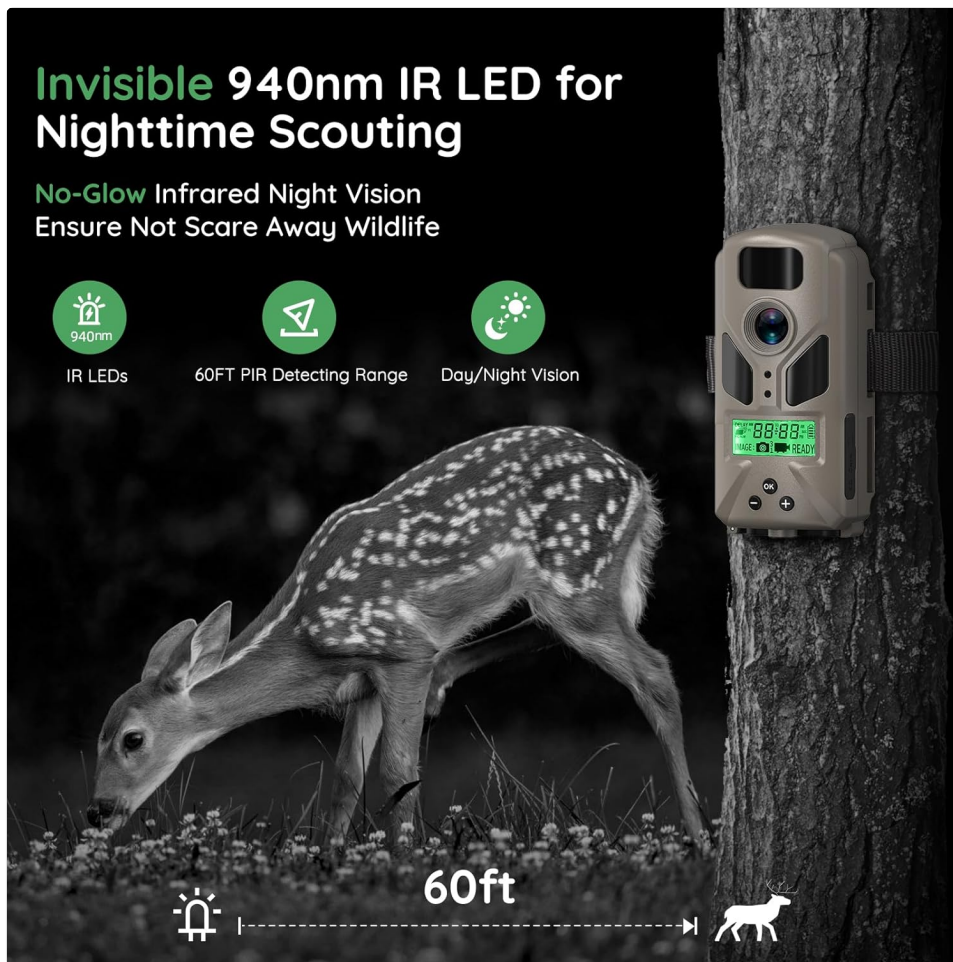


Figure 3: Camera mounted on a tree for discreet wildlife monitoring.

Operating Instructions

1. Capture Modes

The camera supports two primary capture modes: Photo and Video. These modes can be configured through the camera's internal menu to suit your monitoring needs. Refer to the detailed instructions in the full user manual for mode selection and parameter adjustments.

2. Motion Activation (PIR Sensor)

Equipped with a highly sensitive Passive Infrared (PIR) sensor, the camera is motion-activated. It can detect movement up to 60 feet, triggering image or video capture automatically. Adjust PIR sensitivity settings via the menu for optimal performance in different environments.

3. Night Vision

For effective nighttime monitoring, the camera utilizes No Glow 940nm invisible infrared LEDs. This technology ensures clear night images and videos without emitting a visible flash that could scare away wildlife. The illumination range extends up to 80 feet.



Figure 4: Comparison of day and night vision capabilities.

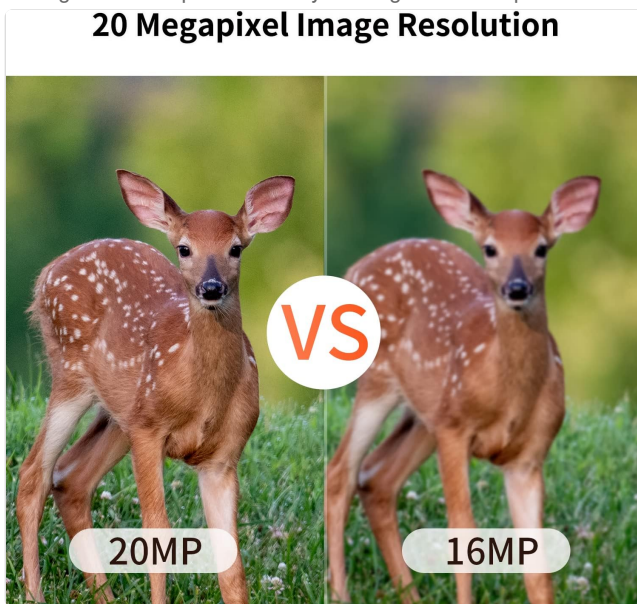


Figure 5: Visual comparison of 20 Megapixel image resolution versus 16 Megapixel.

4. Date and Time Stamp

All captured photos and videos automatically include a date and time stamp. This feature is crucial for organizing and tracking activity over time. Ensure the camera's internal clock is set correctly during initial setup.

Maintenance

1. Waterproof Rating

The camera features an IP66 dustproof and waterproof casing, providing protection against heavy rain and dust ingress. This allows for reliable operation in various outdoor environments. Always ensure all covers and latches are securely closed to maintain the waterproof seal.

2. General Care

To ensure optimal performance and longevity, regularly clean the camera lens and PIR sensor window with a soft, dry cloth to remove any dirt or debris. Periodically check the battery compartment for moisture and ensure it is sealed properly. Store the camera in a cool, dry place when not in use.

Troubleshooting

If you encounter any issues with your OUTDOOR EXPERT Mini Trail Camera, consider the following common solutions:

- **Camera Not Powering On:** Ensure batteries are correctly installed with proper polarity and are fully charged. Check that the battery compartment is securely closed.
- **No Photos/Videos Captured:** Verify that the SD card is inserted correctly, is not full, and is properly formatted. Check PIR sensor settings and ensure there are no obstructions.
- **Poor Image/Video Quality:** Clean the camera lens. Ensure the camera is placed within the optimal range for detection and illumination. Check battery levels as low power can affect performance.
- **Night Vision Issues:** Confirm that the camera is in a dark environment for night vision to activate. Ensure there are no reflective surfaces directly in front of the camera that could cause overexposure.

For more detailed troubleshooting steps or persistent issues, please refer to the comprehensive user manual included with your product or contact OUTDOOR EXPERT customer support.

Specifications

Feature	Detail
Image Resolution	20 Megapixels
Video Resolution	1080P HD
Night Vision	No Glow 940nm IR LEDs
Illumination Range	Up to 80ft
PIR Trigger Range	Up to 60ft
Waterproof Rating	IP66
Power Source	6 AA Batteries (not included)
Storage	Max 32GB SD Card (not included)
Material	Acrylonitrile Butadiene Styrene (ABS)
Item Weight	1.1 pounds

Warranty & Support

This OUTDOOR EXPERT product is manufactured with high-quality standards and is ROHS certified. For any warranty claims, technical assistance, or product support, please refer to the contact information provided in the full user manual or visit the official OUTDOOR EXPERT website for the latest support resources.