

BASEAIRE DRY YOUR CRAWL SPACE & BASEMENT RadonEx 15F

BaseAire RadonEx 15F Radon Mitigation Fan Instruction Manual

Model: RadonEx 15F | Brand: BASEAIRE

1. INTRODUCTION

The BaseAire RadonEx 15F is a 4-inch, 237 CFM radon mitigation fan designed for continuous operation in various residential and commercial settings. This fan effectively reduces radon gas levels, contributing to a healthier indoor environment. Its robust construction and waterproof design allow for both indoor and outdoor installation.

Radon is a naturally occurring, colorless, and odorless radioactive gas that can accumulate in homes and buildings. Prolonged exposure to elevated radon levels is a significant health risk. The RadonEx 15F system works by creating a negative pressure field beneath the building's foundation, drawing radon gas from the soil and venting it safely outside.

2. SAFETY INFORMATION

- Installation should be performed by a qualified professional or in accordance with local building codes and regulations.
- Always disconnect power before servicing the unit.
- Ensure proper grounding to prevent electrical shock.
- Do not operate the fan if any part is damaged or missing.
- Keep children and pets away from the unit during operation and maintenance.
- Ensure adequate ventilation during installation and operation to prevent accumulation of hazardous gases.

3. SETUP & INSTALLATION

3.1 Unboxing the RadonEx 15F

Carefully open the product packaging and inspect the contents. The box should contain the RadonEx 15F fan unit, an instruction manual, and a power cord cover.

Your browser does not support the video tag.

Video 3.1: This video demonstrates the unboxing process of the BaseAire RadonEx 15F fan, showing the fan unit, instruction manual, and power cord cover. It also includes a smoke test to illustrate airflow and a noise test to show the quiet operation.

3.2 Component Overview

Familiarize yourself with the fan's components and dimensions before installation.



Image 3.1: This diagram illustrates the key specifications and dimensions of the BaseAire RadonEx 15F fan, including air output, power, noise level, fan speed, voltage, net weight, and product dimensions.

3.3 Basic Installation Steps

The RadonEx 15F is designed for straightforward integration into a 4-inch PVC radon mitigation system. Ensure all connections are sealed to prevent radon leakage.

1. **Install PVC Soft Joint:** Attach a PVC soft joint (not included) at the top and bottom of the radon fan.
2. **Connect the Pipe:** Connect the system's PVC pipe to the PVC soft joints.
3. **Secure Clamps and Wire:** Secure the clamps with a screwdriver and connect the electrical wiring.

Easy to Installation

Designed for minimal maintenance, it provides continuous radon protection

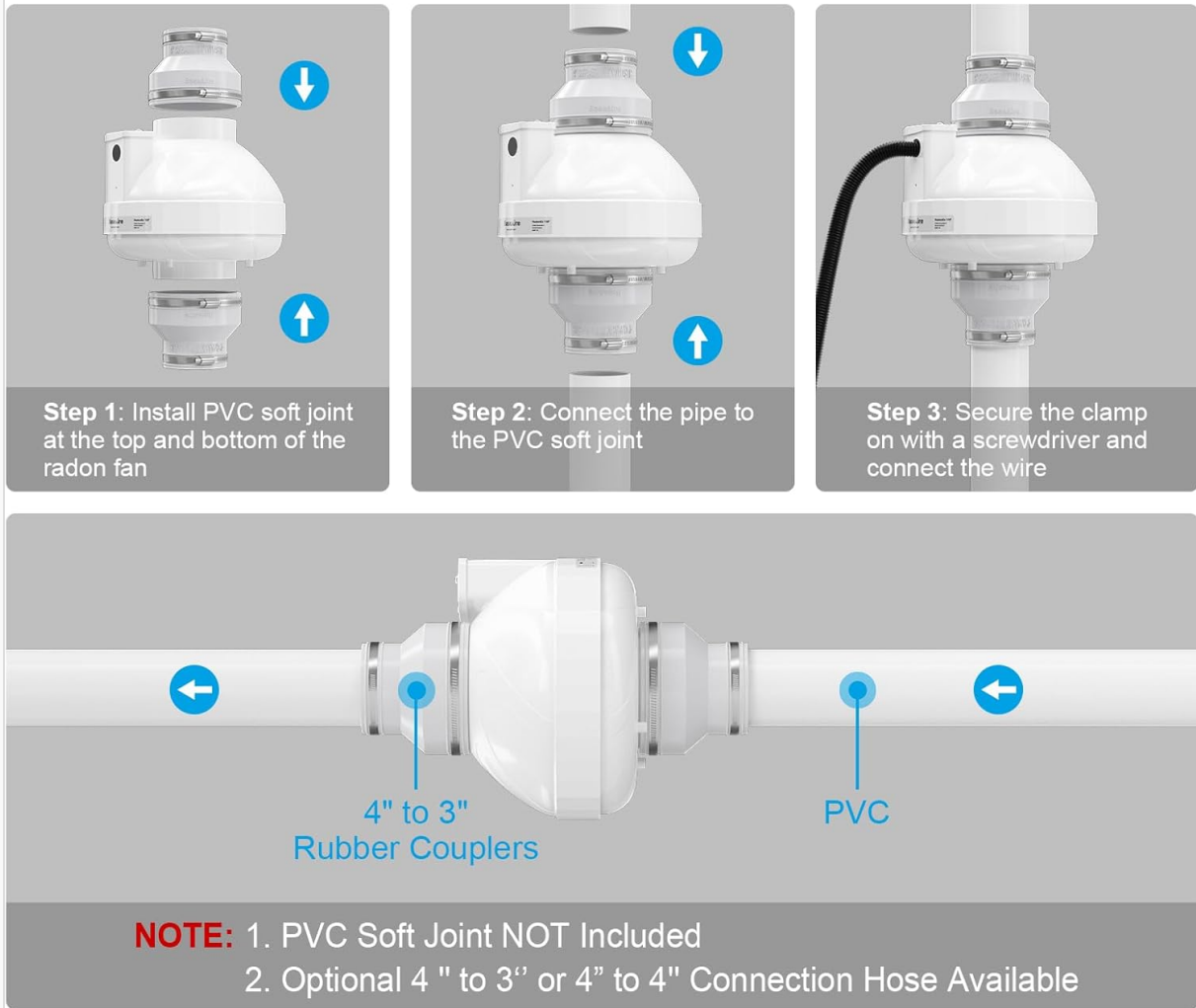


Image 3.2: This image provides a visual guide to the three basic installation steps: installing PVC soft joints, connecting the pipes, and securing the clamps and wiring.

Your browser does not support the video tag.

Video 3.2: This video demonstrates the installation process for a 4-inch radon fan kit, including attaching hose clamps to pipe connectors, slipping connectors onto the fan, connecting to the pipe, and wiring the unit. Note that this video is a general guide for a similar product and may not reflect exact components of the RadonEx 15F.

Your browser does not support the video tag.

Video 3.3: This video provides an outdoor installation guide for a radon fan, showing how to connect the fan to existing piping and secure it to a wall. It highlights the importance of proper wiring and sealing. Note that this video is a general guide for a similar product and may not reflect exact components of the RadonEx 15F.

3.4 Placement Considerations

The RadonEx 15F is suitable for various installation locations, including basements, attics, crawlspaces, and outdoor ventilation ducts. Its IP67 waterproof and dustproof rating ensures durability in harsh weather conditions.

Multiple Installation Locations Available

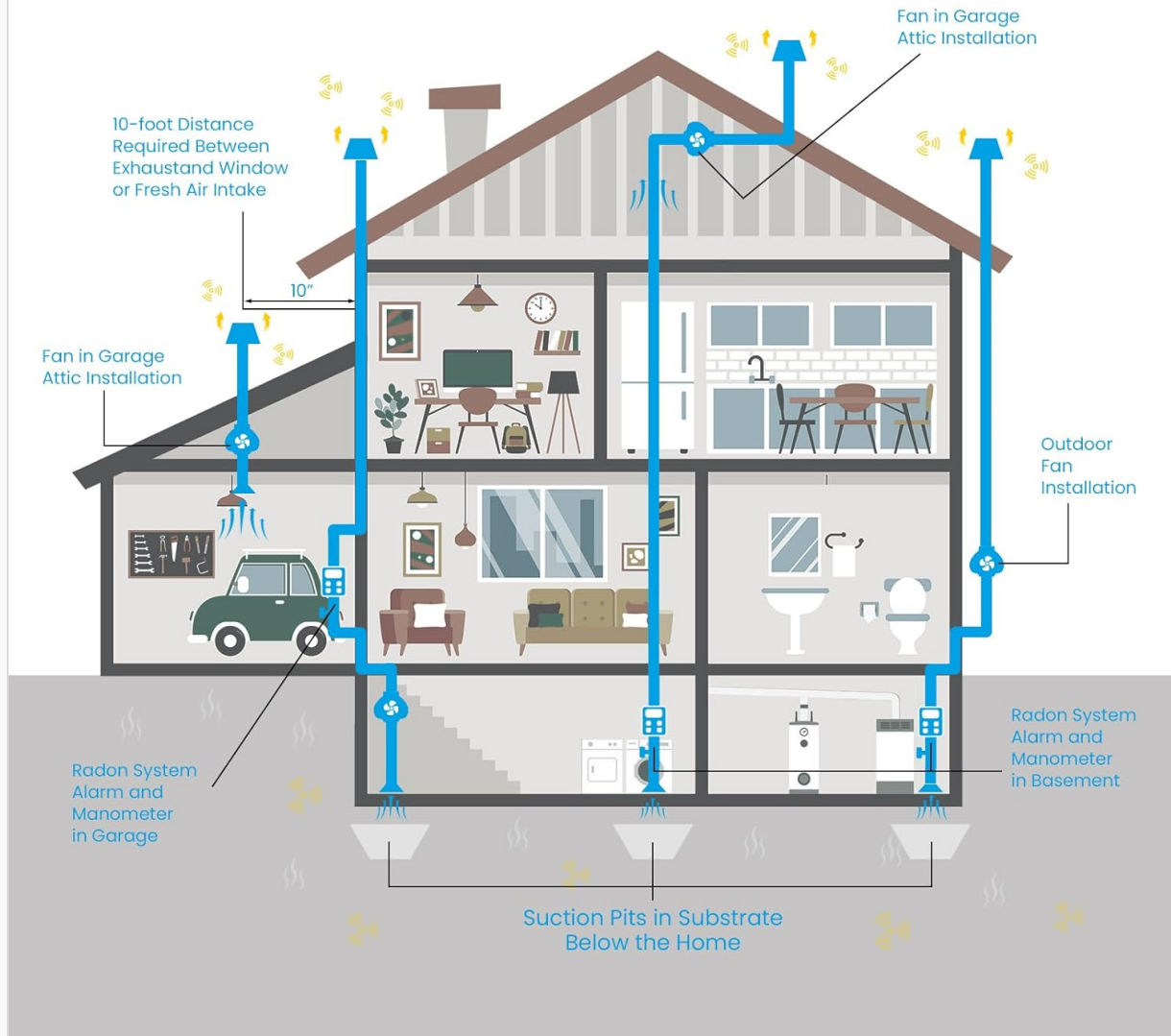


Image 3.3: This diagram illustrates various potential installation locations for a radon mitigation fan system within a home, including garage, attic, basement, and outdoor setups, showing the piping routes and suction pits.

Excellent Water and Dust Resistance

Suitable for Use in Both Indoor and Outdoor



Image 3.4: This image displays examples of the BaseAire RadonEx 15F fan installed outdoors, demonstrating its weather resistance and suitability for external mounting on a building's exterior.

Waterproof and Dustproof Design

Suitable For Various Environments



Image 3.5: This image highlights the IP67 waterproof and dustproof design of the BaseAire RadonEx 15F, showing water splashing on the unit to emphasize its durability in various environments.

4. OPERATION

The BaseAire RadonEx 15F is designed for continuous, 24/7 operation to maintain consistent radon reduction. Once properly installed and powered, the fan will continuously draw air from beneath your home's foundation and vent it outdoors. Its energy-efficient design ensures minimal impact on electricity consumption, and its quiet operation will not disrupt daily activities or sleep.

Most homes experience a significant reduction in radon levels within 48 hours of continuous operation, achieving EPA-recommended air exchange rates.

5. MAINTENANCE

The RadonEx 15F is designed for minimal maintenance. Regular checks of the system's manometer (if installed) are recommended to ensure proper operation and airflow. If the manometer reading indicates a loss of suction, inspect the piping for blockages or leaks.

Periodically inspect the fan unit for any visible damage or unusual noises. The sealed design of the fan prevents internal contamination, reducing the need for internal cleaning. If the fan requires replacement, follow the steps outlined in the installation section for safe removal and replacement.

Your browser does not support the video tag.

Video 5.1: This video provides instructions for replacing a radon fan, including turning off power, disconnecting wiring, loosening clamps, and installing a new unit. It also shows how to check the manometer for proper system function. Note that this video is a general guide for a similar product and may not reflect exact components of the RadonEx 15F.

6. TROUBLESHOOTING

- **No Power:** Check the power connection and circuit breaker. Ensure the fan is properly wired.
- **Reduced Airflow/Suction:** Inspect the piping for obstructions (e.g., debris, water accumulation). Check all connections for leaks. Verify the manometer reading.
- **Unusual Noise:** Ensure the fan is securely mounted and not vibrating against surrounding structures. If the noise persists, the fan motor may require inspection or replacement.
- **Radon Levels Not Decreasing:** Re-test radon levels after 48-72 hours of continuous operation. If levels remain high, consult a radon mitigation professional to assess the system's design and installation.

7. SPECIFICATIONS

Feature	Specification
Model Name	RadonEx 15F
Brand	BASEAIRE DRY YOUR CRAWL SPACE & BASEMENT
Air Flow Capacity	237 Cubic Feet Per Minute (CFM)
Power	49 watts
Voltage	120 Volts
Fan Speed	2,500 RPM
Noise Level	≤70 dB
Product Dimensions	9.79"D x 9.79"W x 8.51"H
Item Weight	7.26 pounds
Indoor/Outdoor Usage	Indoor, Outdoor
Waterproof Rating	IP67
Recommended Coverage	Up to 1500 Square Feet

8. WARRANTY & SUPPORT

For warranty information and technical support, please contact BaseAire customer service directly. Details regarding specific warranty periods and coverage can be found on the manufacturer's official website or by contacting their support team. Keep your purchase receipt as proof of purchase for any warranty claims.

