

Eyoyo EY-015P-2

Eyoyo 2D&1D Mini Bluetooth Barcode Scanner Instruction Manual

Model: EY-015P-2

1. INTRODUCTION

Thank you for choosing the Eyoyo 2D&1D Mini Bluetooth Barcode Scanner. This compact and lightweight device is designed for efficient and versatile barcode scanning, supporting both 1D and 2D codes, including QR codes. It offers multiple connection options and data transfer modes to suit various applications, from retail and inventory management to libraries and offices.



Image 1.1: Two Eyoyo 2D&1D Mini Bluetooth Barcode Scanners, showcasing the product and its accessories.

Mini But Powerful

Get rid of Bulky Design



Image 1.2: The Eyoyo mini barcode scanner held in a hand, highlighting its ultra-compact and portable design.

2. KEY FEATURES

- **Versatile Connectivity:** Supports 2.4G wireless, Bluetooth wireless, and USB wired connections.
- **Compact and Lightweight:** Ultra-mini size (3.5*1.18*0.78 inches) and lightweight (1.5 oz) for portability.
- **Broad Compatibility:** Works with Windows XP/7/8/10, Android devices, Mac OS, and Linux operating systems, connecting to PCs, laptops, tablets, and smartphones.
- **Long-Lasting Battery:** Equipped with a 450mAh rechargeable battery, providing up to 8 hours of continuous scanning, 4 hours charging time, and 720 hours standby time.
- **Large Storage Capacity:** 16MB internal memory can store over 100,000 UPC/EAN barcodes in offline scanning mode.
- **Extended Transmission Range:** Up to 30m/98ft (2.4G wireless) and 50m/164ft (Bluetooth) in barrier-free environments.
- **Adjustable Feedback:** Sound and vibration alerts can be turned off.
- **Multiple Barcode Symbolologies:** Scans Codabar, Code11, Code93, MSI, Code 128, UCC/EAN-128, Code 39, EAN-8, EAN-13, UPCA, ISBN, Industrial25, Interleaved 25, Standard 25, 2/5 Matrix, QR Code,

Data Matrix, Maxicode, Aztec code, Hanxin, PDF417, and most other 1D and 2D codes.

- **Customizable Output:** Supports hiding or adding custom prefix/suffix digits.

3. SETUP AND CONNECTION

3.1 Charging the Scanner

Before first use, fully charge the scanner using the provided USB cable. Connect the USB-C end to the scanner and the USB-A end to a power adapter or computer USB port. The indicator light will show charging status.

3.2 Connection Modes

The scanner supports three connection methods:



Image 3.1: Overview of the 3-in-1 connection methods.

3.2.1 2.4G Wireless Connection

1. Plug the 2.4G USB dongle into an available USB port on your computer or device.
2. Turn on the scanner. It will automatically attempt to connect to the dongle.
3. A successful connection is indicated by a specific sound or light pattern (refer to the scanner's LED

indicator guide in the full manual).



Image 3.2: Scanner connected via 2.4G USB dongle.

3.2.2 Bluetooth Wireless Connection

1. Turn on the scanner.
2. Activate Bluetooth on your host device (phone, tablet, laptop).
3. Search for available Bluetooth devices. The scanner will appear as "Eyoyo-015" or similar.
4. Select the scanner to pair. A successful connection will be confirmed by an indicator on the scanner.



Image 3.3: Scanner connected via Bluetooth.

3.2.3 USB Wired Connection

1. Connect the scanner to your computer using the provided USB cable.
2. The scanner will function as a USB HID keyboard device, and scanned data will appear directly in any active text field.



Image 3.4: Scanner connected via USB cable.

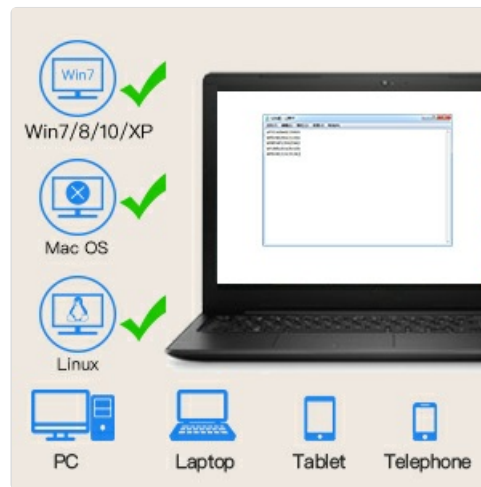


Image 3.5: Compatibility with various operating systems and devices.

4. OPERATING INSTRUCTIONS

4.1 Basic Scanning

To scan a barcode, point the scanner's window at the barcode and press the scan button. The scanner will emit a light beam. Ensure the beam covers the entire barcode for accurate reading. A successful scan is typically indicated by a beep and/or vibration.

Scan 1D 2D QR Code

Easily scan 1D, 2D and QR code from paper or monitor screen.



Image 4.1: Scanning various 1D, 2D, and QR codes.

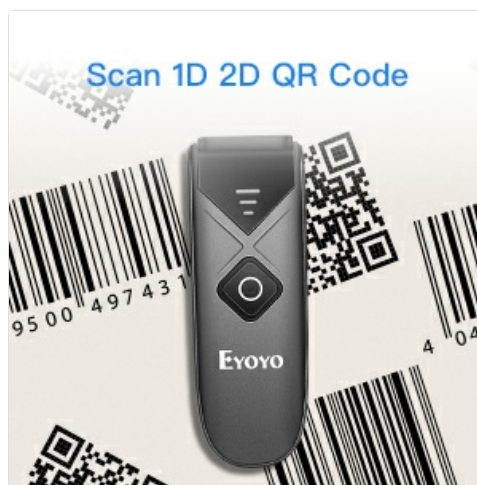


Image 4.2: Demonstrating the scanner's ability to read different barcode types.

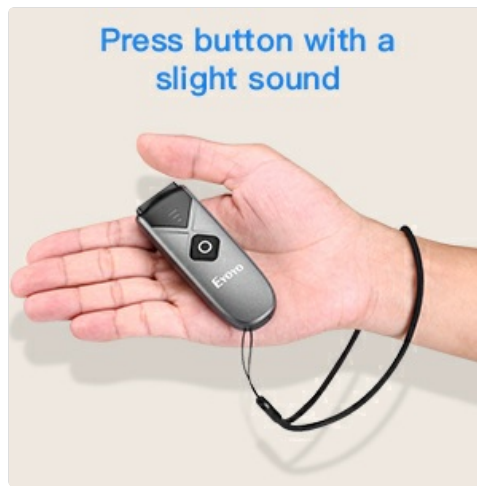


Image 4.3: Pressing the scan button for operation.

4.2 Data Upload Modes

The scanner offers two modes for data transfer:

- **Instant Upload Mode:** Barcode data is immediately transmitted to your connected device upon scanning. This is suitable for real-time data entry.
- **Storage Mode:** Barcode data is stored in the scanner's internal 16MB memory. You can scan up to 150,000 barcodes offline and then upload them in bulk to your device when needed.

To switch between modes, scan the corresponding configuration barcodes provided in the full user manual.

Two Upload Modes

According your needs choose more freely.



Instant Upload Mode

Synchronously upload data to your device when scanning barcodes



Storage Mode

Store the barcode data in scanner's 16MB memory (up to 80000 barcodes), Then upload the barcodes when you need it



Image 4.4: Illustration of Instant Upload and Storage Modes.

4.3 Sound and Vibration Settings

The scanner's sound and vibration feedback can be enabled or disabled. Refer to the detailed configuration barcodes in the complete manual to adjust these settings.

4.4 Automatic Shutdown

By default, the scanner will automatically shut down after 5 minutes of inactivity to conserve power. This auto-shutdown time can be adjusted or disabled by scanning specific configuration barcodes found in the full manual.

5. MAINTENANCE

5.1 Cleaning

To clean the scanner, use a soft, dry cloth. For stubborn dirt, a slightly damp cloth with mild soap can be used, ensuring no liquid enters the device. Do not use abrasive cleaners or solvents.

5.2 Battery Care

To prolong battery life, avoid fully discharging the scanner frequently. Store the scanner in a cool, dry place when not in use for extended periods. Charge the battery at least once every three months if stored.

6. TROUBLESHOOTING

- **Scanner not connecting:** Ensure the scanner is charged and powered on. For 2.4G, check if the dongle is properly inserted. For Bluetooth, ensure Bluetooth is enabled on your device and the scanner is in pairing mode.
- **Scanner not scanning:** Ensure the barcode is clean, not damaged, and properly illuminated. Adjust the distance and angle of the scanner to the barcode. Check if the scanner is in the correct operating mode.
- **No data transmitted:** Verify the connection mode (2.4G, Bluetooth, USB) is active and correctly paired. If in Storage Mode, ensure you have initiated the upload process.
- **Short battery life:** Ensure the scanner is fully charged. Reduce screen brightness or disable unnecessary features if applicable.

For more detailed troubleshooting steps, please refer to the comprehensive user manual or contact customer support.

7. SPECIFICATIONS

Feature	Detail
Model Number	EY-015P-2
Product Dimensions	0.6 x 1.08 x 3.24 inches
Item Weight	1.5 ounces (scanner only), 5.3 ounces (package)
Connectivity Technology	2.4G Wireless, Bluetooth, USB Cable
Compatible Devices	Desktop, Laptop, POS, Smartphone, Tablet
Power Source	Battery-Powered, Corded Electric
Battery Type	1 Lithium Polymer battery (included)
Battery Capacity	450mAh
Continuous Scan Time	Up to 8 hours
Standby Time	Up to 720 hours (30 days)

Charging Time	Approx. 4 hours
Storage Capacity	16MB (stores over 100,000 barcodes)
2.4G Wireless Range	Up to 30m/98ft (barrier-free), 15m/49ft (with obstacles)
Bluetooth Wireless Range	Up to 50m/164ft (barrier-free), 20m/66ft (with obstacles)
Supported Symbolologies	1D: Codabar, Code11, Code93, MSI, Code 128, UCC/EAN-128, Code 39, EAN-8, EAN-13, UPCA, ISBN, Industrial25, Interleaved 25, Standard 25, 2/5 Matrix. 2D: QR Code, Data Matrix, Maxicode, Aztec code, Hanxin, PDF417.

8H Super Long Scan Time

With 450mAh rechargeable battery up to 8 hours continuous work.

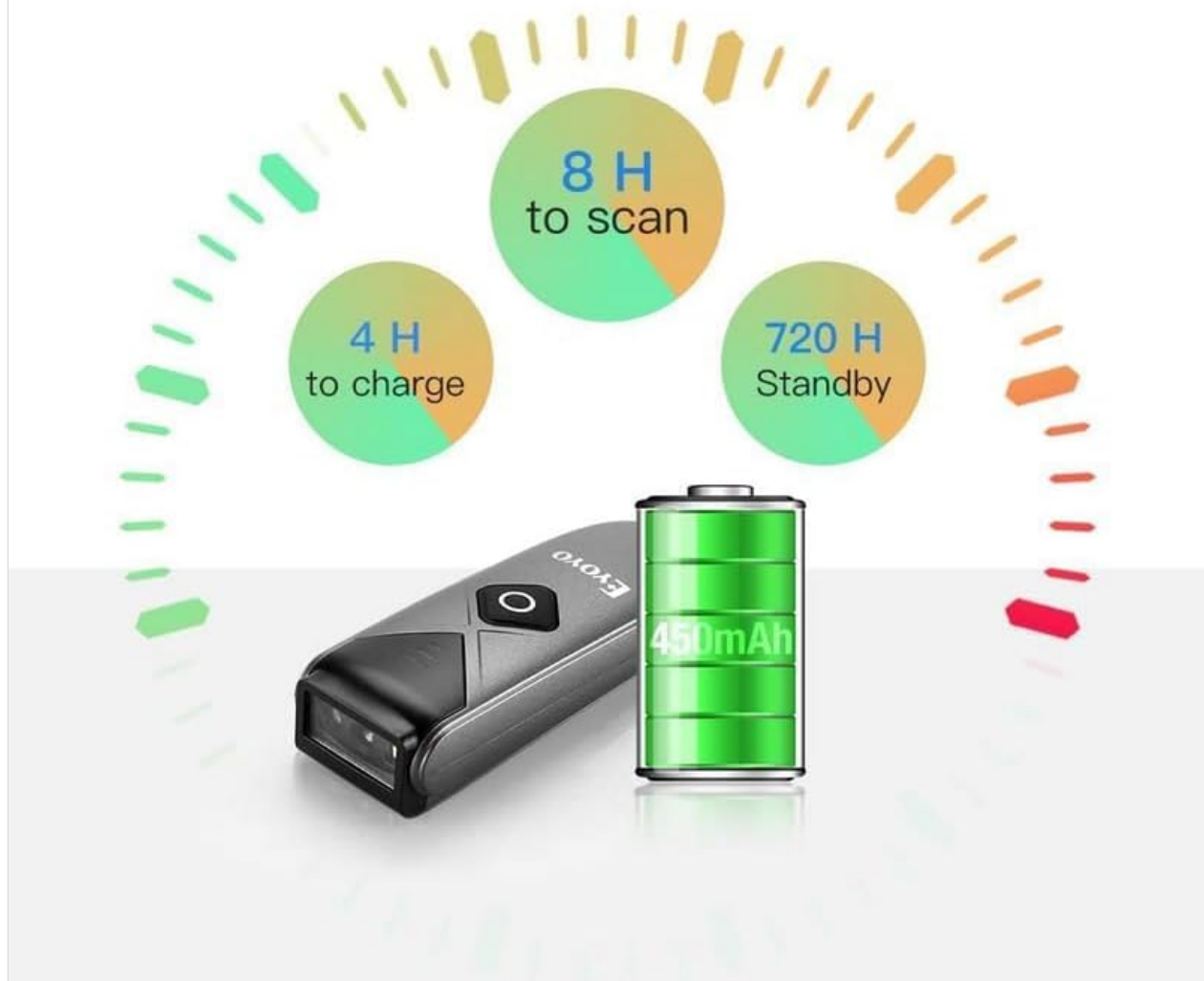


Image 7.1: Battery performance overview.

Long Wireless Transmission Distance

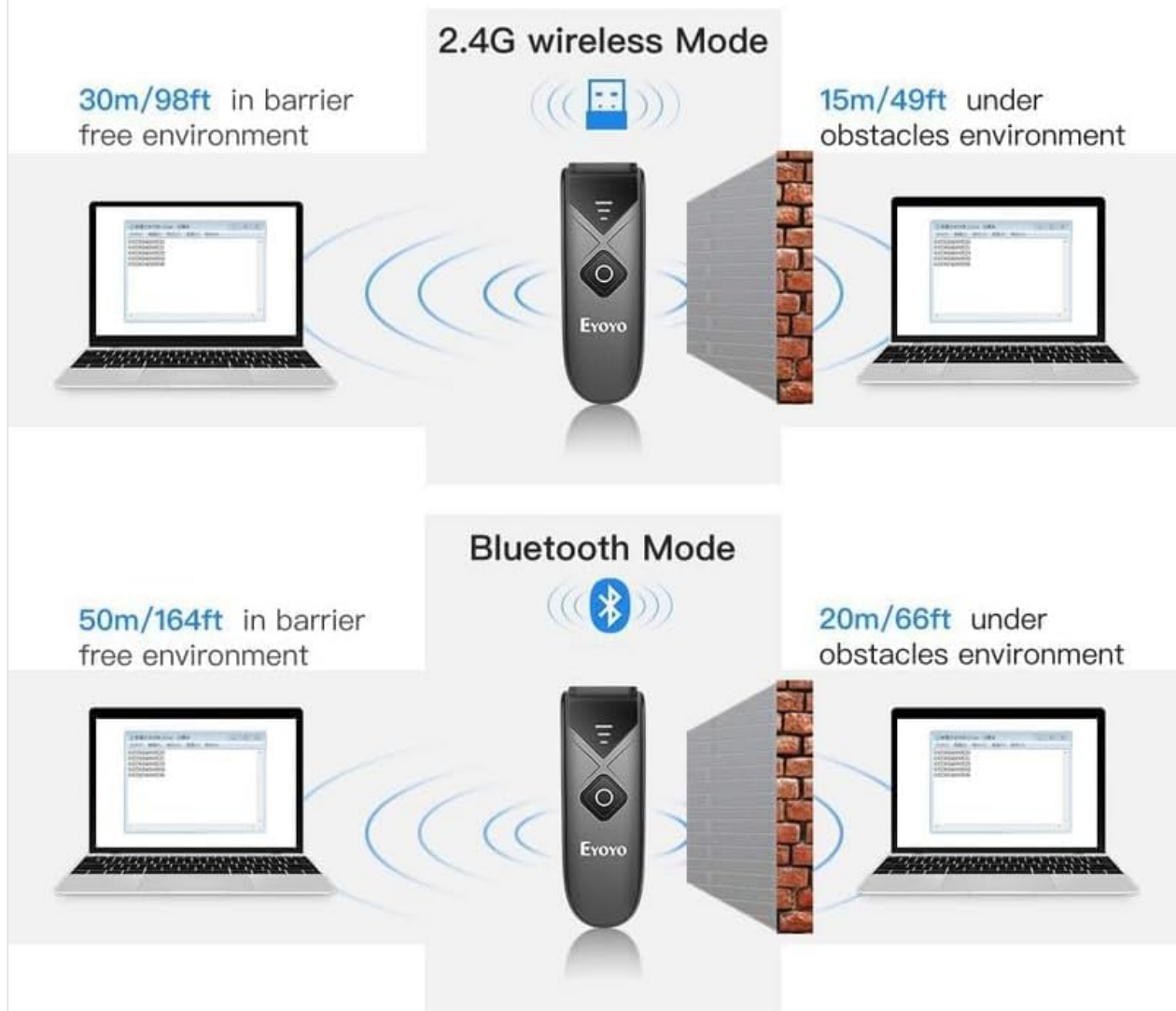


Image 7.2: Wireless transmission distance details.

8. WARRANTY AND SUPPORT

Eyoyo products are designed for reliability and performance. This product comes with a standard manufacturer's warranty. For specific warranty terms, registration, or technical support, please refer to the warranty card included in your product packaging or visit the official Eyoyo website. If you encounter any issues or have questions, please contact Eyoyo customer service for assistance.