

Jocoevol C-0642

# Jocoevol White 7-Drawer Fluted Dresser (Model C-0642) Instruction Manual

Brand: Jocoevol | Model: C-0642

- Introduction
- Setup & Assembly
- Operating  
Instructions
- Maintenance & Care
- Troubleshooting
- Specifications
- Warranty
- Support

## 1. INTRODUCTION

This manual provides detailed instructions for the assembly, operation, and maintenance of your Jocoevol White 7-Drawer Fluted Dresser, Model C-0642. Please read all instructions carefully before beginning assembly and retain this manual for future reference.

### Important Safety Information

To prevent serious injury, it is crucial to install the anti-tip kit provided with your dresser. Always secure the dresser to a wall using the anti-tip hardware. Never allow children to climb on or play with the dresser or its drawers. Heavy items should be placed in lower drawers to reduce the risk of tipping.

# Anti-collapse Design

Protect your kids and pets

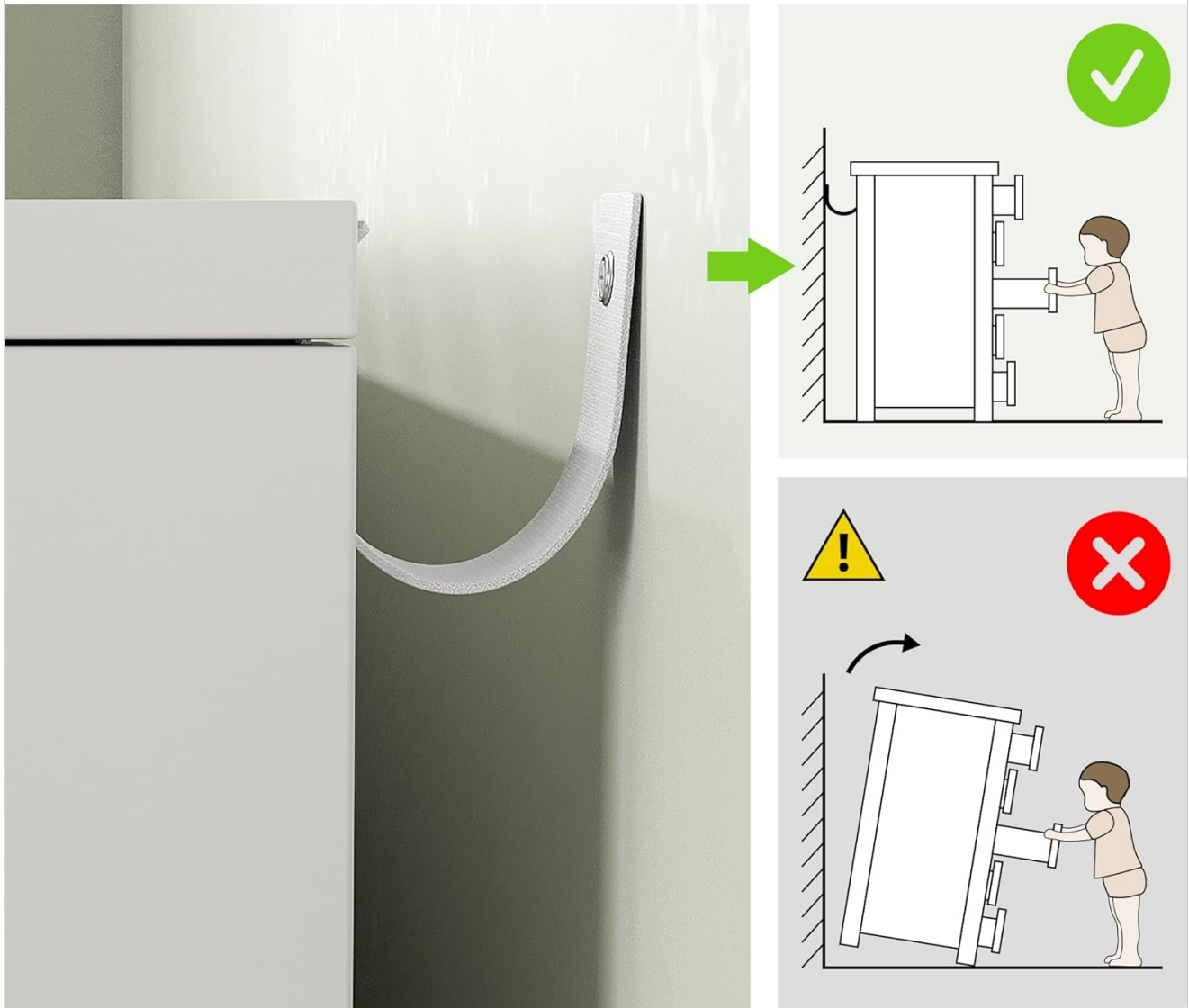


Figure 1: Anti-collapse design illustrating how to secure the dresser to prevent tipping.

## 2. SETUP & ASSEMBLY

Your Jocoevol 7-Drawer Fluted Dresser requires assembly. All necessary parts, hardware, and an instruction manual are included. For a smooth assembly process, ensure you have a Phillips head screwdriver. Follow the steps below or refer to the assembly video for visual guidance.

### Assembly Video Guide

Your browser does not support the video tag.

*Video 1: Detailed assembly instructions for the Jocoevol 7-Drawer Fluted Dresser. This video demonstrates each step of the assembly process, from identifying parts to securing the final components.*

### General Assembly Tips:

- Unpack all components and verify against the parts list.
- Work on a soft, clean surface to prevent scratches.
- Ensure all screws are tightened securely, but do not overtighten.

- For optimal alignment, carefully follow the pre-drilled holes.
- Two people are recommended for assembly due to the dresser's weight and size.

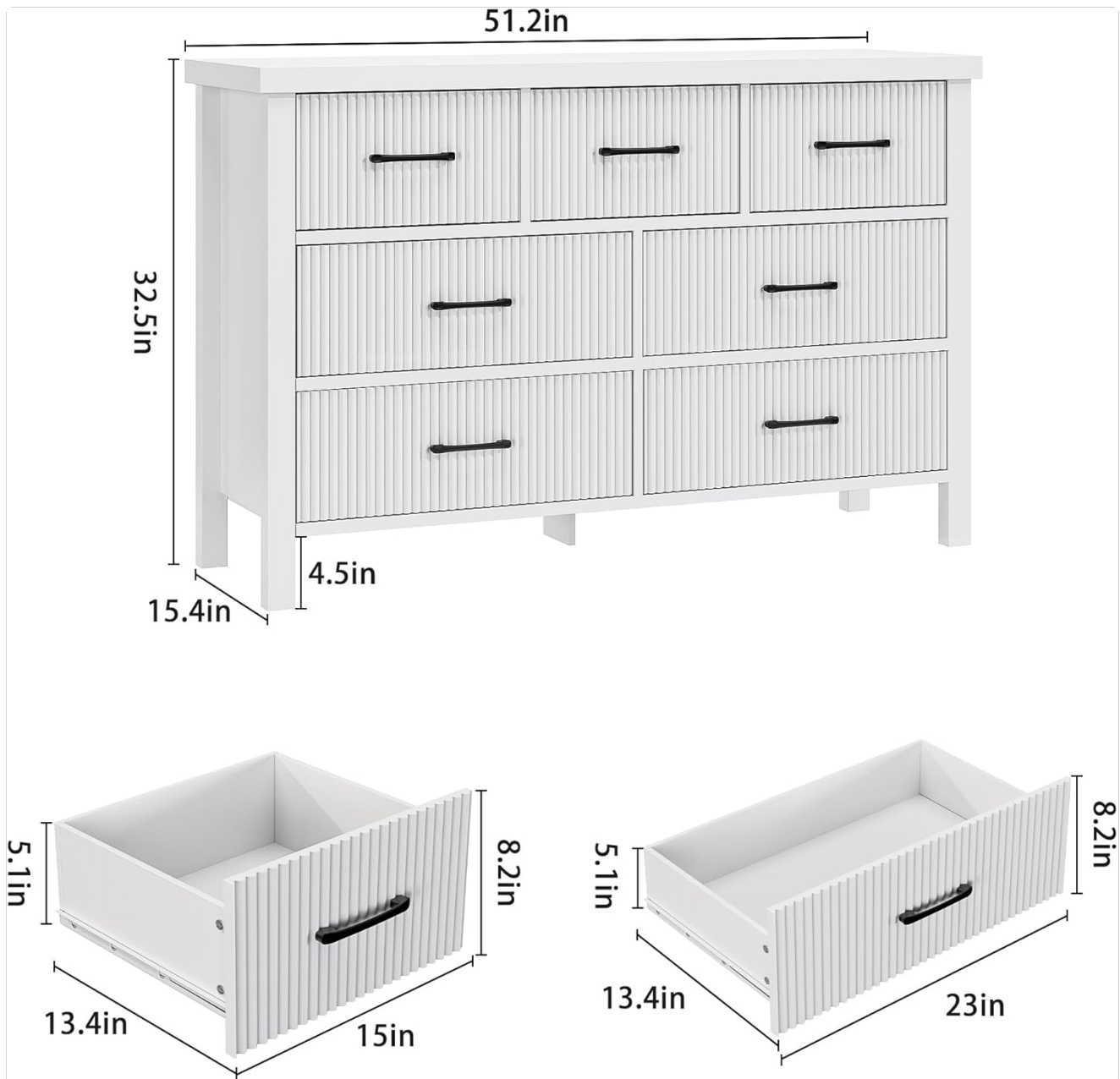


Figure 2: Product dimensions for the Jocoevol 7-Drawer Fluted Dresser.

### 3. OPERATING INSTRUCTIONS

The Jocoevol 7-Drawer Fluted Dresser is designed for ample storage and easy access. It features seven spacious sliding drawers with metal handles for smooth operation.

#### Drawer Usage:

- **Opening/Closing Drawers:** Gently pull or push the metal handles to open and close the drawers. The high-quality metal glides ensure smooth and quiet movement.
- **Storage Capacity:** The varied drawer sizes allow for organized storage of various items such as clothing, socks, cosmetics, and other personal belongings.
- **Top Surface:** The wide top surface can be used to display decorative items, photos, mirrors, plants, or lamps, helping to keep your space organized and clutter-free.



Figure 3: Dresser with drawers open, showcasing ample storage space.

## 4. MAINTENANCE & CARE

---

Proper care will ensure the longevity and appearance of your Jocoevol dresser.

### Cleaning Instructions:

- **Surface Cleaning:** The thickened top is waterproof and easy to clean. Use a soft, damp cloth to wipe down surfaces. Avoid abrasive cleaners or harsh chemicals that may damage the finish.
- **Spills:** Wipe up spills immediately to prevent staining or damage to the engineered wood.
- **Dusting:** Regularly dust with a soft, dry cloth to maintain its appearance.

### General Care:

- Avoid placing extremely hot or cold items directly on the surface without protective coasters.
- Keep the dresser away from direct sunlight and heat sources to prevent warping or fading.
- Periodically check all hardware connections and tighten if necessary to maintain stability.





Figure 4: Key features including smooth glides and waterproof tabletop.

## 5. TROUBLESHOOTING

If you encounter any issues with your dresser, refer to the common problems and solutions below.

### Common Issues:

#### 1. Drawers do not slide smoothly:

- Ensure all drawer slides are correctly installed and aligned.
- Check that all screws securing the slides are tightened properly.
- Verify that the drawer box itself is assembled squarely.

#### 2. Dresser feels unstable:

- Confirm all cam locks and screws throughout the dresser frame are fully tightened.
- Ensure the dresser is placed on a level surface.
- Install the anti-tip kit as described in the safety section to secure the dresser to the wall.

3. **Missing parts or damaged components:**

- Refer to the parts list in the assembly instructions. If any parts are missing or damaged, contact customer support for assistance.

6. **SPECIFICATIONS**

Attribute	Detail
Brand	Jocoevol
Model Number	C-0642
Product Dimensions (D x W x H)	15.4" x 51.2" x 32.5"
Color	White Fluted
Item Weight	103.6 Pounds
Number of Drawers	7
Material	Engineered Wood
Finish Type	Painted
Assembly Required	Yes
Recommended Room Type	Bedroom, Entryway, Hallway, Living Room

7. **WARRANTY INFORMATION**

Jocoevol stands behind the quality of its products. While specific warranty details may vary, we are committed to addressing any manufacturing defects or issues arising from normal use. Please retain your proof of purchase for any warranty claims.

For detailed warranty terms and conditions, please contact our customer support team.

8. **CUSTOMER SUPPORT**

We are committed to providing excellent service. If you have any questions before or after your purchase, or require assistance with assembly or parts, please do not hesitate to contact us.

Our customer support team aims to reply to all inquiries within 24 hours.

**Contact Information:**

**Email:** [support@jocoevol.com](mailto:support@jocoevol.com) (Placeholder email, please refer to your product documentation for the correct contact email.)

**Website:** [Jocoevol Store on Amazon](#)

