

[Manuals.plus](#) /

› [G-Wolves](#) /

› G-Wolves HTR Lightweight Wireless Gaming Mouse Instruction Manual

## G-Wolves HTR

# G-Wolves HTR Lightweight Wireless Gaming Mouse Instruction Manual

Model: HTR (No-Honeycomb, White)

## INTRODUCTION

This manual provides detailed instructions for the setup, operation, maintenance, and troubleshooting of your G-Wolves HTR Lightweight Wireless Gaming Mouse. Please read this manual thoroughly to ensure optimal performance and longevity of your device.

The G-Wolves HTR is an ultra-lightweight wireless gaming mouse designed for high-performance gaming. It features a PixArt PAW3395 sensor, 8K polling rate capability, and a semi-asymmetrical design optimized for fingertip and claw grip styles.



Image: Top-down view of the G-Wolves HTR Lightweight Wireless Gaming Mouse.

## PACKAGE CONTENTS

Verify that all items listed below are included in your package:

- G-Wolves HTR Wireless Gaming Mouse
- USB-C Charging/Data Cable
- Wireless Receiver (for 2.4G connection)
- Additional mouse feet/grips (contents may vary)
- Instruction Card



Image: All components included in the G-Wolves HTR package.

## SETUP GUIDE

### 1. Charging the Mouse

Before initial use, connect the mouse to your computer using the provided USB-C cable. The mouse will begin charging automatically. A full charge is recommended for optimal wireless performance.

### 2. Connecting to Your Computer

#### Wireless (2.4G) Connection:

1. Insert the wireless receiver into an available USB port on your computer.
2. Turn on the mouse using the power switch located on the underside of the mouse.
3. The mouse should automatically connect to the receiver.

#### Wired (USB) Connection:

Connect the mouse directly to your computer using the provided USB-C cable. The mouse will function as a wired device and charge simultaneously.

### 3. Software Installation (Optional)

For advanced customization, including DPI settings, polling rate, button assignments, and macros, download the official G-Wolves software from the G-Wolves website. The software allows you to personalize your mouse settings and save them to the onboard memory.

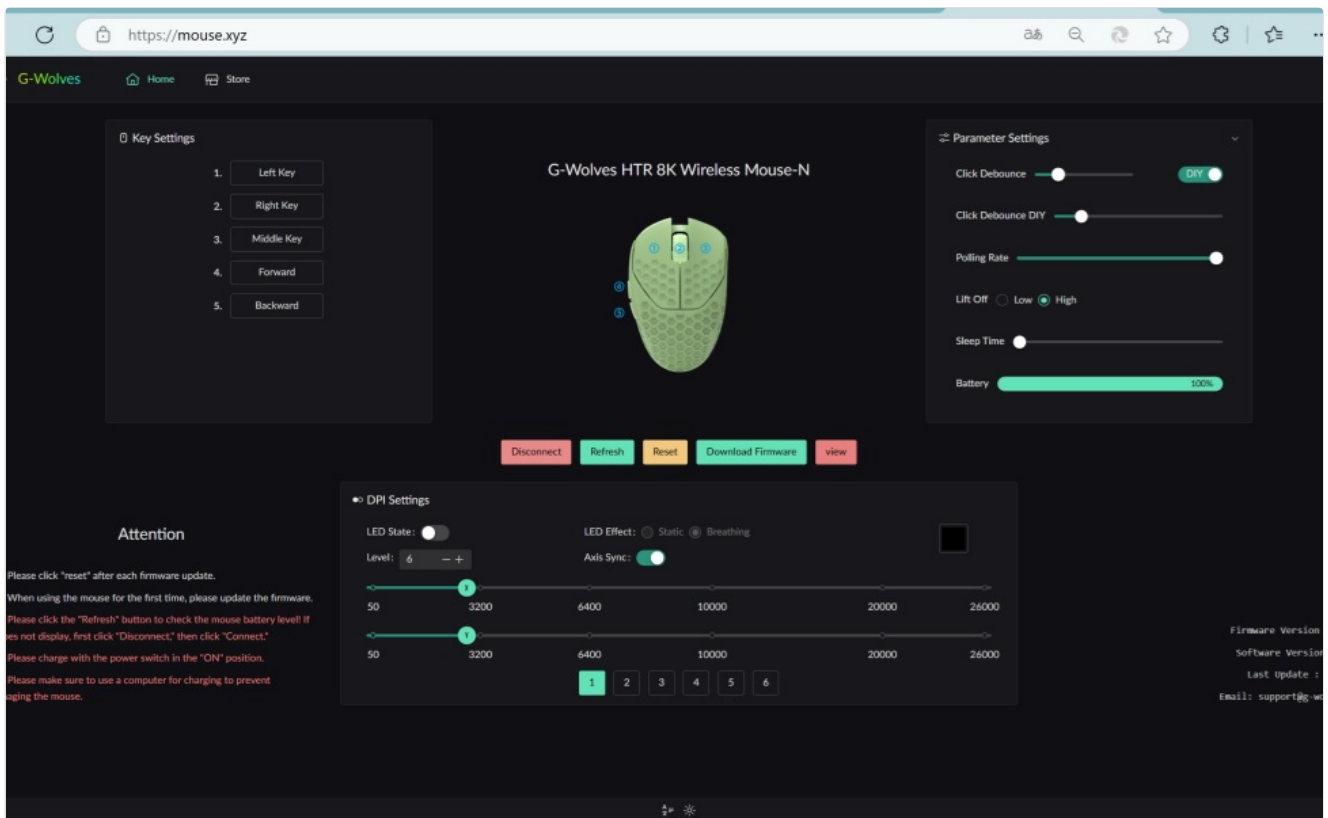


Image: G-Wolves software interface for mouse customization.

## OPERATING THE MOUSE

### Basic Functions

- **Left Click:** Primary action.
- **Right Click:** Secondary action or context menu.
- **Scroll Wheel:** Scroll up/down, Middle Click.
- **Side Buttons:** Typically assigned as Forward/Backward by default. These can be customized via software.



Image: Side view of the G-Wolves HTR mouse, showing its profile and side buttons.

## DPI Adjustment

The mouse features a PixArt PAW3395 sensor with adjustable CPI (Counts Per Inch) up to 26,000. DPI settings can be cycled through pre-set levels using a dedicated button (if present, otherwise via software) or precisely configured using the G-Wolves software. The software also supports independent X and Y-axis DPI settings.

## Polling Rate

The G-Wolves HTR supports an 8kHz polling rate, providing ultra-fast communication with less than 0.25ms data transmission delay. An optional 8kHz receiver can further reduce latency to under 0.125ms for maximum responsiveness. The polling rate can be adjusted through the G-Wolves software.

## On-Board Memory

Your customized settings (DPI, polling rate, button assignments, macros) are saved directly to the mouse's onboard memory. This allows you to use your personalized settings on different computers without needing to reinstall the software.

## CUSTOMIZATION OPTIONS

The G-Wolves software provides comprehensive customization options to tailor your mouse to your preferences:

- **DPI Settings:** Fine-tune CPI levels in 50 DPI increments, including independent X/Y axis adjustments.
- **Polling Rate:** Select desired polling rate (up to 8kHz).
- **Lift-Off Distance (LOD):** Adjust the distance at which the sensor stops tracking when lifted.

- **Debounce Time:** Configure the debounce time for button clicks to prevent accidental double-clicks. The mouse features a pre-debounce algorithm for a true 0ms response time.
- **Button Assignment:** Reassign functions to the 6 programmable buttons.
- **Macros:** Create and assign complex macro sequences.
- **RGB Lighting:** Customize lighting effects and colors.

Refer to the G-Wolves software interface for detailed instructions on each customization feature.

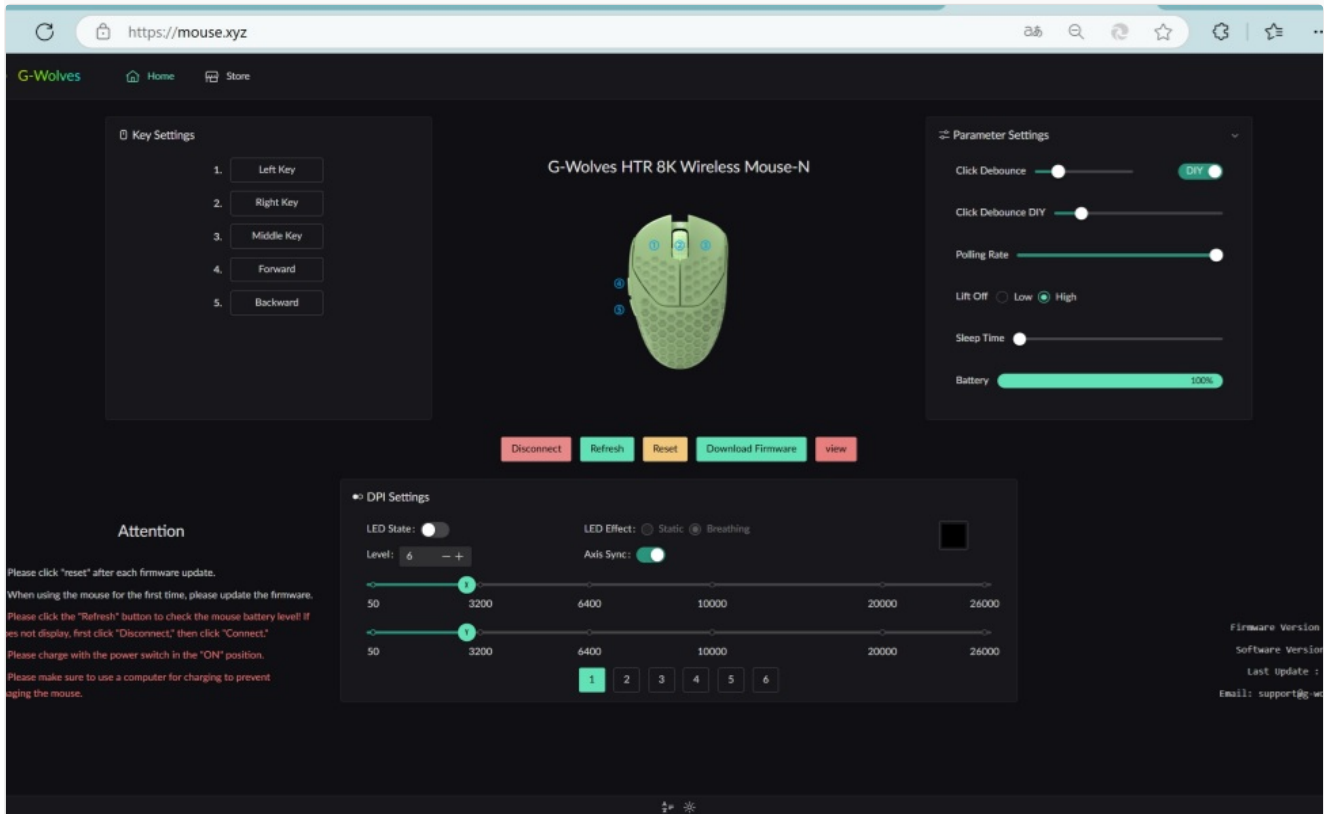


Image: G-Wolves software interface for advanced customization.

## MAINTENANCE AND CARE

- **Cleaning:** Use a soft, dry cloth to clean the mouse surface. Avoid abrasive cleaners or solvents. For sensor cleaning, use a cotton swab lightly dampened with isopropyl alcohol.
- **Storage:** Store the mouse in a cool, dry place away from direct sunlight and extreme temperatures.
- **Durability:** The mouse is equipped with high-durability switches rated for 80 million clicks, ensuring long-term reliability.

## TROUBLESHOOTING

### Mouse not responding:

Ensure the mouse is charged. Check if the wireless receiver is properly inserted into a USB port. If using wired mode, ensure the USB-C cable is securely connected to both the mouse and the computer. Try a different USB port.

### Intermittent connection or lag:

Ensure the mouse is within range of the wireless receiver. Minimize interference from other wireless devices. Update mouse firmware and software to the latest versions.

### DPI/Button settings not applying:

Ensure the G-Wolves software is running and settings are saved to the onboard memory. After firmware updates, it is recommended to click "reset" and then "refresh" in the software.

**Battery not charging:**

Verify the USB-C cable is functional and connected to a working USB port. Ensure the mouse is powered on when connected for charging.

## TECHNICAL SPECIFICATIONS

Feature	Detail
Model	HTR (No-Honeycomb)
Brand	G-Wolves
Connectivity	2.4G Wireless, USB Wired
Sensor	PixArt PAW3395 Optical Sensor
Max CPI	26,000 (adjustable in 50 CPI increments)
Polling Rate	Up to 8kHz (with optional 8kHz receiver)
Latency	Less than 0.25ms (wireless), under 0.125ms (with 8kHz receiver)
Buttons	6 Programmable Buttons
Switch Durability	80 Million Clicks
Weight	Approximately 27-28 grams
Dimensions (L x W x H)	92mm x 57mm x 35mm (3.62 x 2.24 x 1.38 inches)
Battery	Rechargeable (included)
On-Board Memory	Yes

## WARRANTY AND SUPPORT

The G-Wolves HTR Wireless Gaming Mouse comes with a one-year manufacturer's warranty. This warranty covers defects in materials and workmanship under normal use.

For technical support, warranty claims, or further assistance, please visit the official G-Wolves website or contact their customer service department. Refer to the instruction card included in your package for specific contact details or support links.

Manufacturer: Beijing Jingyun Make Technology Co., Ltd. (G-Wolves)