

## COLBOR CF5

# COLBOR CF5 Portable Fog Machine User Manual

Model: CF5 | Brand: COLBOR

## INTRODUCTION

---

Thank you for choosing the COLBOR CF5 Portable Fog Machine. This compact and powerful device is designed to create atmospheric effects for various applications, including photography, stage performances, parties, cosplay, streaming, and weddings. With its advanced features like adjustable smoke density, RGB lighting, and flexible design, the CF5 offers precise control and versatility. This manual provides essential information for safe and effective operation, setup, maintenance, and troubleshooting. Please read it thoroughly before using the product.



Figure 1: COLBOR CineFlare CF5 Portable Fog Machine, designed for atmosphere creation.

## SAFETY INFORMATION

---

To ensure safe operation and prevent damage to the device or injury, please adhere to the following safety guidelines:

- Use only **food-grade plant glycerin** fog liquid with the CF5. Using other liquids may damage the machine or produce harmful fumes.
- Do not block the air vents or smoke outlet during operation.
- The machine generates heat during operation. Avoid touching the smoke outlet directly to prevent burns.
- Ensure adequate ventilation in the operating area.
- Keep the device away from water and other liquids. Do not operate in wet conditions.
- Store the device in a cool, dry place when not in use.
- Keep out of reach of children and pets.
- Do not attempt to disassemble or repair the device yourself. Contact qualified personnel for service.

# Safe and Odorless Ensuring Your Creative Projects Are Always Secure

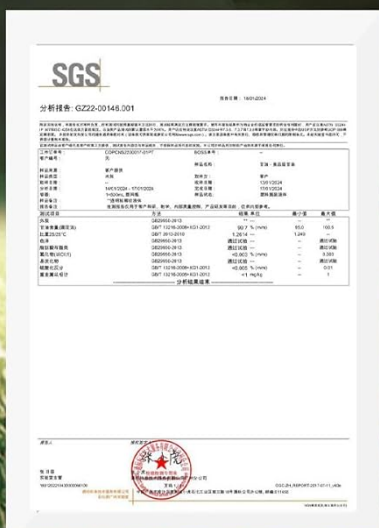


Figure 2: The CF5 uses food-grade plant glycerin, ensuring safe and odorless fog production.

## PACKAGE CONTENTS

Upon opening the package, verify that all items listed below are present and in good condition:

- COLBOR CF5 Portable Fog Machine
- Remote Control
- Flexible Tube
- Nozzle Cover
- Various Adapters/Nozzles
- USB Charging Cable
- Carrying Case
- Fog Liquid (sample bottle)
- User Manual (this document)



Figure 3: All components included with the COLBOR CF5 Portable Fog Machine.

## PRODUCT OVERVIEW

The COLBOR CF5 features a compact and ergonomic design with key components for versatile operation.

- **Adjustable Body:** The main body can be adjusted up to 60 degrees, allowing precise direction of smoke flow for various angles, including low-angle effects.
- **Smoke Outlet:** Where the fog is emitted. Equipped with a magnetic RGB light ring.
- **Control Panel:** Features buttons for power, density adjustment, fan speed, and cycle settings. Includes a display screen for current settings.
- **Fog Liquid Chamber:** 12 ml capacity for fog liquid.
- **USB-C Port:** For charging the internal battery.
- **Magnetic Fan:** Built-in fan with adjustable speed (3 settings) to shape smoke flow.



CineFlare CF5

# Foldable and Flexible Body

The ergonomic body meets diverse needs  
and can be adjusted to precisely  
direct the smoke flow

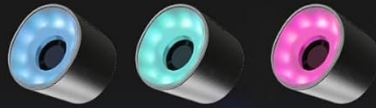


Figure 4: The CF5's foldable body allows for flexible smoke direction.

CineFlare CF5

# With Lights and a Fan

Elevate Your Shots with  
Style and Color



360-degree color  
ring adjustments



3-Level Fan  
Speed Adjustment



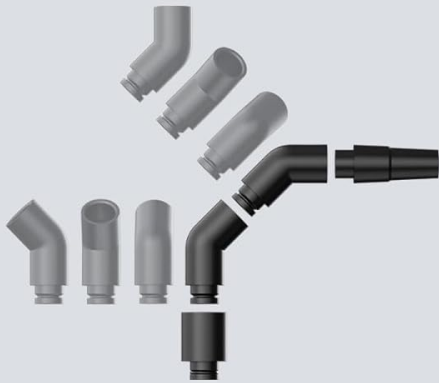
Figure 5: Integrated RGB light and adjustable fan for enhanced effects.

## SETUP

1. **Charge the Device:** Before first use, fully charge the COLBOR CF5 using the provided USB-C cable. The battery indicator on the display will show charging status.
2. **Fill Fog Liquid:**
  - Locate the fog liquid chamber.
  - Carefully pour the food-grade plant glycerin fog liquid into the chamber, ensuring not to overfill the 12 ml capacity.
  - Securely close the chamber cap.
3. **Attach Accessories (Optional):**
  - For broader smoke dispersion or specific effects, attach the flexible tube or desired nozzle adapter to the smoke outlet.
  - The nozzle cover can be used for specific directional control.

Includes external accessories such as a flexible tube and a nozzle cover etc for broader smoke dispersion.

### Adapter



### Flexible Tube



### Nozzle Cover



Figure 6: External accessories for varied smoke dispersion.

## OPERATING INSTRUCTIONS

1. **Power On/Off:** Press and hold the power button on the control panel to turn the device on or off.
2. **Adjust Smoke Density:**
  - The CF5 offers 25 levels of smoke density adjustment.
  - Use the '+' and '-' buttons on the control panel to increase or decrease the smoke output intensity.
  - The current density level will be displayed on the screen.



Figure 7: Control panel for adjusting smoke density and fan speed.

### 3. Adjust Fan Speed:

- The built-in magnetic fan has 3 adjustable speed settings.
- Use the dedicated fan speed button (if available, or cycle through settings using a multi-function button) to change the fan speed. This affects how the smoke disperses.

### 4. Control RGB Light:

- The 360-degree RGB light ring can add color to your smoke effects.
- Refer to the on-screen menu or dedicated light button to cycle through colors or adjust brightness.

### 5. Remote Control Operation:

- The included remote control allows wireless operation up to 10 meters.
- Use the remote to power on/off, adjust smoke density, and control other settings from a distance.



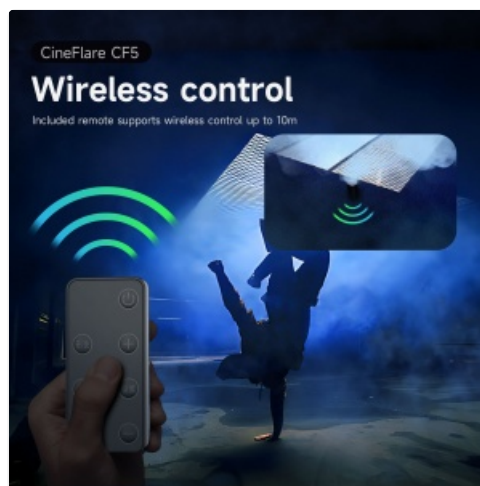


Figure 8: Wireless remote control for convenient operation.

## 6. Custom Smoke Settings:

- The CF5 supports custom settings for continuous smoke duration, interval timing, and the number of smoke bursts.
- Access these settings via the control panel's menu or dedicated cycle settings button.
- The device can maintain continuous maximum smoke output for up to 10 minutes.



Figure 9: Advanced settings for precise smoke control.

## MAINTENANCE

- **Cleaning:** Regularly wipe the exterior of the machine with a soft, dry cloth. Do not use abrasive cleaners or solvents.
- **Fog Liquid Chamber:** If the machine will not be used for an extended period, empty the fog liquid chamber and run the machine briefly to clear any remaining liquid from the internal pump and heater.
- **Storage:** Store the COLBOR CF5 in its carrying case in a cool, dry place, away from direct sunlight and extreme temperatures.

## TROUBLESHOOTING

Problem	Possible Cause	Solution
---------	----------------	----------

Problem	Possible Cause	Solution
No smoke output	Fog liquid chamber empty.	Refill fog liquid.
	Battery low.	Charge the device.
	Machine not heated sufficiently.	Wait for the machine to reach operating temperature (indicated on display).
	Nozzle/tube blocked.	Check and clear any blockages in the nozzle or tube.
Weak smoke output	Low smoke density setting.	Increase smoke density using '+' button or remote.
	Low fog liquid level.	Refill fog liquid.
	Incorrect fog liquid type.	Ensure only food-grade plant glycerin is used.
Remote control not working	Remote battery depleted.	Replace remote battery.
	Out of range.	Move closer to the machine (within 10 meters).
	Obstruction between remote and machine.	Ensure clear line of sight.

## SPECIFICATIONS






Feature	Detail
Model	CF5
Output Power	40 Watts
Fog Liquid Capacity	12 ml
Smoke Density Levels	25 levels
Fan Speed Settings	3 levels
Adjustable Body Angle	Up to 60 degrees
Remote Control Range	Up to 10 meters
Battery Type	Lithium Ion (included)
Item Weight	2 pounds
Package Dimensions	11.59 x 5.5 x 3.7 inches

## WARRANTY AND SUPPORT

COLBOR products are manufactured to high-quality standards. For information regarding warranty coverage, please refer to the warranty card included with your product or visit the official COLBOR website. For technical support, troubleshooting assistance, or inquiries about replacement parts, please contact COLBOR customer service through their official channels.

- **Official COLBOR Website:** [www.colborlight.com](http://www.colborlight.com)
- **Amazon Store:** [Visit the COLBOR Store on Amazon](#)

Related Documents - CF5

<div><div>COLBOR</div><div></div><div><div>CineFlare CF5 Fog Machine</div><div>User Manual</div><div><small>Thank you for choosing COLBOR product. Please read the manual carefully before use and follow all instructions and safety warnings.</small></div></div></div>	<p><a href="#">COLBOR CineFlare CF5 Fog Machine User Manual and Specifications</a></p> <p>Comprehensive user manual for the COLBOR CineFlare CF5 Fog Machine, detailing its features, operation, maintenance, specifications, and warranty information. Learn how to use the fog machine, adjust settings, and care for your product.</p>
<div><div>COLBOR</div><div></div><div><div>CineFlare CF5 Fog Machine</div><div>User Manual</div><div><small>Thank you for choosing COLBOR product. Please read the manual carefully before use and follow all instructions and safety warnings.</small></div></div></div>	<p><a href="#">COLBOR CineFlare CF5 Fog Machine User Manual</a></p> <p>User manual for the COLBOR CineFlare CF5 Fog Machine, detailing its operation, features, specifications, and warranty information.</p>
<div><div></div><div><div>COLBOR</div><div><div>CineFlare CF3 Fog Machine</div><div>User Manual</div><div><small>Thank you for choosing COLBOR product. Please read the manual carefully before use and follow all instructions and safety warnings.</small></div></div></div></div>	<p><a href="#">COLBOR CineFlare CF3 Fog Machine User Manual</a></p> <p>User manual for the COLBOR CineFlare CF3 fog machine, detailing its features, operation, and safety protections. Includes instructions on tipping protection, product description, power on/off, smoke output, and oil injection.</p>
<div><div></div><div><div>COLBOR</div><div><div>CineFlare CF3 Fog Machine</div><div>User Manual</div><div><small>Thank you for choosing COLBOR product. Please read the manual carefully before use and follow all instructions and safety warnings.</small></div></div></div></div>	<p><a href="#">COLBOR CineFlare CF3 Fog Machine User Manual</a></p> <p>User manual for the COLBOR CineFlare CF3 Fog Machine, detailing its anti-tilt protection, operation, and oil juice filling procedures.</p>
<div><div>COLBOR</div><div></div><div><div>CineFlare CF3 Fog Machine</div><div>User Manual</div><div><small>Thank you for choosing COLBOR product. Please read the manual carefully before use and follow all instructions and safety warnings.</small></div></div></div>	<p><a href="#">COLBOR CineFlare CF3 Fog Machine User Manual</a></p> <p>User manual for the COLBOR CineFlare CF3 fog machine, a 30W device designed for creating smoke effects. This guide provides detailed instructions on product care, operation, charging, oil filling, power management, smoke output control, density adjustment, fan installation, anti-tilt protection, packing list, and technical specifications.</p>



[Colbor CL60R RGB COB LED Monolight User Manual](#)

Comprehensive user manual for the Colbor CL60R RGB COB LED Monolight, detailing safety instructions, product components, installation, operation, and various lighting modes including CCT, HSI, and special effects.