



Manuals.plus /

› HOOBRO /

› HOOBRO Full Size Floating Bed Frame with LED Lights and Charging Station Instruction Manual

## HOOBRO BG33UDBF01

# HOOBRO Full Size Floating Bed Frame with LED Lights and Charging Station

Model: BG33UDBF01 | Brand: HOOBRO

## INTRODUCTION

---

Thank you for choosing the HOOBRO Full Size Floating Bed Frame. This manual provides detailed instructions for assembly, operation, maintenance, and troubleshooting to ensure safe and optimal use of your new bed frame. Please read all instructions carefully before beginning assembly and retain this manual for future reference.

## Safety Information

- Ensure all parts are present and undamaged before assembly. Do not use if any parts are missing or broken.
- Assemble the bed frame on a soft, clean surface to prevent scratches.
- Do not overtighten screws during initial assembly; tighten fully only after all components are in place.
- Keep small parts away from children during assembly.
- Do not stand on the bed frame during assembly or use.
- Distribute weight evenly across the bed frame.
- Regularly check all connections to ensure they remain tight.

## PRODUCT OVERVIEW

---

The HOOBRO Full Size Floating Bed Frame combines modern design with practical features, including integrated LED lighting and a convenient charging station. Its sturdy construction and padded edges are designed for comfort and durability.



Image: The HOOBRO Full Size Floating Bed Frame in a bedroom setting, showcasing its LED underglow and modern design.

## Key Features

- **Floating Design with Padded Edges:** Supported by internal legs for a floating visual effect, with high-resilience sponge padding to minimize bumps.
- **Integrated Charging Station:** Features 2 AC outlets, 1 USB, and 1 Type-C port, mountable at any of the four corners.
- **LED Light Strip:** Multi-color LED strip with music sync and timer functions, controllable via remote or app.
- **Quiet and Stable Construction:** 11 sturdy metal slats distribute weight evenly, with silent pads and non-slip foot plugs.
- **Easy Assembly:** Designed for straightforward assembly with detailed instructions and labeled parts.



**Padded Edges**



**Metal Edges**

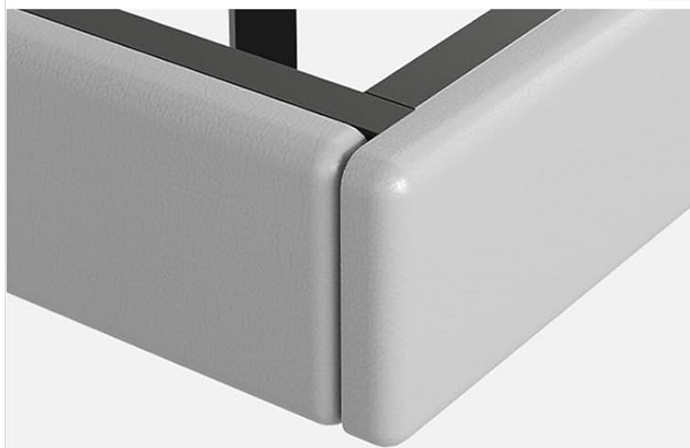


Image: A visual comparison highlighting the safety and comfort of the floating bed frame's padded edges against the potential hazard of exposed metal edges on traditional frames.



Image: A view showing the 9.4-inch (24cm) under-bed clearance, suitable for storage boxes or robotic vacuum cleaners.

## PACKAGE CONTENTS

Please verify that all components listed below are included in your package before proceeding with assembly. Refer to the assembly diagram for visual identification of parts.

Your browser does not support the video tag.

Video: An overview of all components included in the HOOBRO Floating Bed Frame package, laid out on a wooden floor, showing various metal tubes, screws, LED strip, and charging station.

### Hardware and Components (Example, refer to actual manual for full list):

- Metal Frame Sections (e.g., side rails, crossbars, support legs)
- Wooden Slats
- Screws, Bolts, and Washers (various types, labeled A, B, C, etc.)
- Allen Wrench

- Charging Station Unit with Power Cord
- LED Light Strip with Remote Control and Controller
- Cable Ties or Clips for LED strip management
- Non-slip Foot Plugs

## ASSEMBLY INSTRUCTIONS

---

Follow these steps carefully to assemble your HOOBRO Full Size Floating Bed Frame. It is recommended to have two people for assembly.

### Assembly Video Guide

Your browser does not support the video tag.

Video: A detailed step-by-step installation guide for the HOOBRO Floating Bed Frame, demonstrating how to connect each metal component and install the slats.

### Step-by-Step Guide

1. **Assemble the Main Frame:** Connect the main frame sections (e.g., side rails and end rails) using the appropriate bolts and the Allen wrench. Ensure all connections are finger-tight at this stage.



Image: Illustration showing the connection of two side rail sections with screws, highlighting the alignment points.

2. **Attach Support Legs:** Secure the central support legs to the main frame. These legs are crucial for the bed's stability and the