

## MARS HYDRO ADLITE-RB30

# MARS HYDRO ADlite Red30 & Blue30 LED Grow Light

Model: ADLITE-RB30

## INTRODUCTION

The MARS HYDRO ADlite Red30 & Blue30 LED Grow Light system is designed to provide targeted supplemental lighting for various stages of plant growth. The Red30 bars emit a 660nm deep red spectrum, optimizing flowering and fruiting, while the Blue30 bars provide a 440nm blue spectrum, promoting robust vegetative growth and sturdy stems. This manual provides essential information for the safe and effective setup, operation, and maintenance of your ADlite grow lights.

## SAFETY INFORMATION

Please read all safety instructions before operating the device. Failure to follow these instructions may result in electric shock, fire, or serious injury.

- **Electrical Safety:** Ensure the power supply voltage matches the specifications of the grow light. Do not operate with damaged cords or plugs. Always disconnect power before installation, cleaning, or maintenance.
- **Water Exposure:** This product is not waterproof. Avoid direct contact with water or high humidity environments to prevent electrical hazards.
- **Heat Management:** Ensure adequate ventilation around the light bars to prevent overheating. Do not cover the light bars during operation.
- **Eye Protection:** The LED lights emit intense light. Avoid direct eye exposure. Protective eyewear is recommended when working near the operating lights.
- **Installation:** Install the light bars securely to prevent them from falling. Keep out of reach of children and pets.

## WHAT'S IN THE BOX

Verify that all components are present upon unboxing:

- 2 x ADlite Red30 LED Light Bars
- 2 x ADlite Blue30 LED Light Bars
- 4 x Mounting Brackets
- 8 x Hanging Ropes



This image displays the complete contents of the product package, including the ADlite Deep Red and ADlite Blue light bars, four mounting brackets, and eight hanging ropes.

## SPECIFICATIONS

Feature	Specification
Model	ADLITE-RB30
Light Source Type	Light Emitting Diode
Color	Red, Blue
Wattage	30 Watts (per bar)
Voltage	230 Volts (AC)
Material	Aluminum
Product Dimensions	23.62"L x 4.72"W x 4.13"H
Item Weight	4.34 pounds
Mounting Type	Bracket Mount, Pole Mount

## SETUP

Proper installation is crucial for optimal performance and safety. The ADLITE bars offer flexible mounting options to integrate with your existing grow light setup.

### Mounting Options

The ADLITE lights can be mounted using two primary methods:

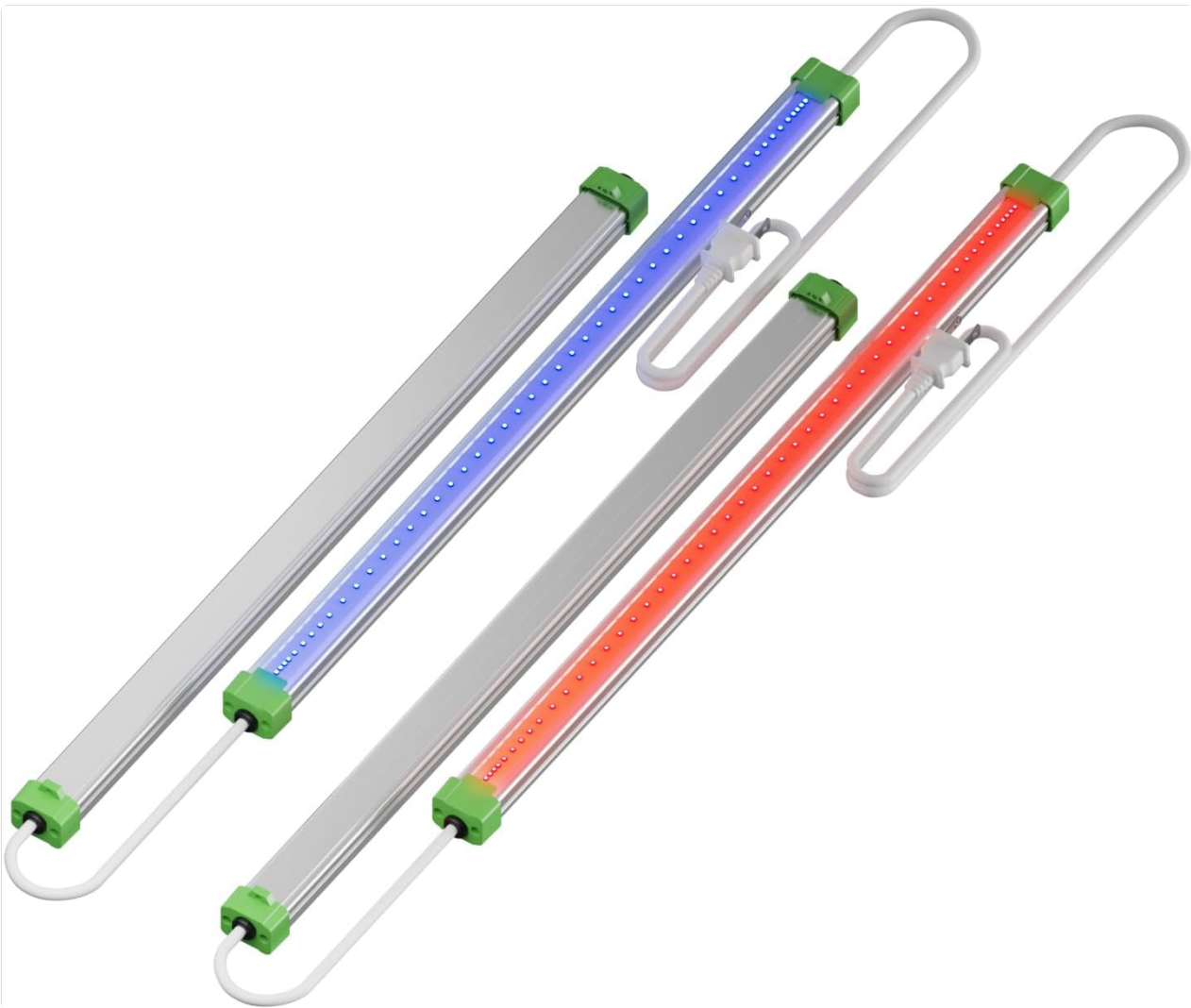
- Embedded Mounting Bracket:** For a secure and integrated fit, the light bars can be attached directly to the frame of compatible MARS HYDRO grow lights using the provided brackets.
- Hanging on Sides:** For versatile setups, the light bars can be hung alongside your main grow light using the included hanging ropes. This method allows for flexible positioning to target specific areas of your canopy.



This image illustrates two flexible mounting methods for the ADlite lights: an embedded mounting bracket for a secure fit within a grow light frame, and hanging on the sides for versatile setups.

## **Connection**

Connect the ADlite bars to a suitable power source. The lights are designed for daisy-chaining with compatible MARS HYDRO main lights or can be powered independently if required. Ensure all connections are secure before powering on.



This image displays the four LED light bars included in the ADlite Red30 and Blue30 set. Two bars emit red light, and two emit blue light, designed for supplemental plant illumination.

## OPERATING INSTRUCTIONS

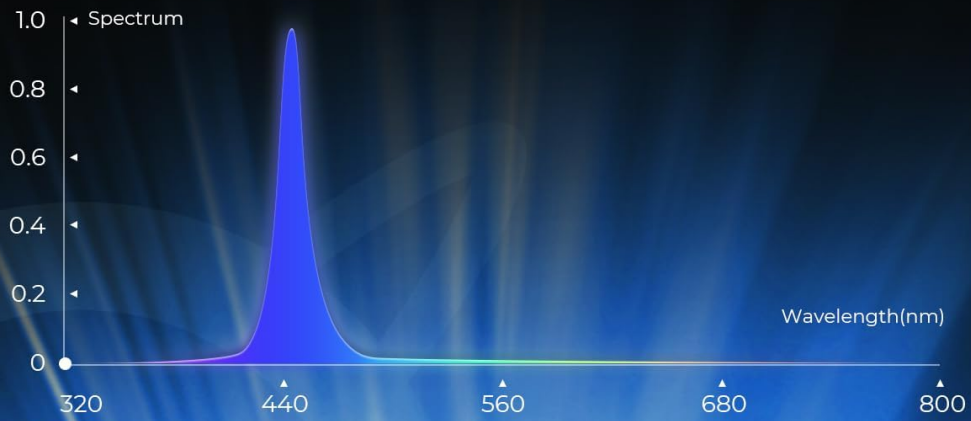
The ADlite Red30 and Blue30 lights are designed to supplement your main grow light, providing specific spectrums to enhance plant development during different growth phases.

### Spectrum Functionality

- **ADlite Red30 (660nm Deep Red):** Enhances flower and fruit development, leading to larger, denser yields and more vibrant blooms. This spectrum is primarily used during the flowering stage.
- **ADlite Blue30 (440nm Blue):** Encourages compact growth, thicker branches, tighter internodes, and larger, denser leaves. This promotes a robust plant structure capable of supporting heavy yields. This spectrum is primarily used during the vegetative stage.

# BLUE 440NM SPECTRUM

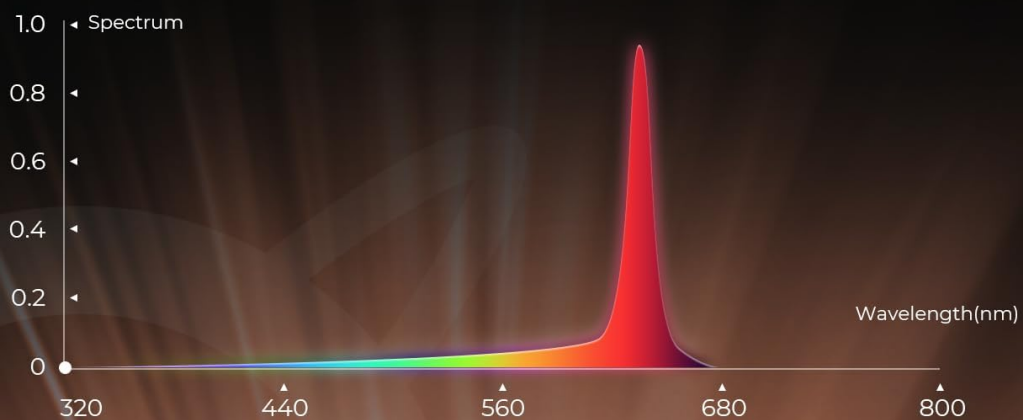
Promotes compact, sturdy growth  
and robust stems.



A graph illustrating the spectral output of the Deep Red 660nm light, showing a peak intensity at the 660 nanometer wavelength, which promotes flower and fruit development.

# DEEP RED 660NM SPECTRUM

Promotes flower and fruit development  
Enhances flower coloration



A graph illustrating the spectral output of the Blue 440nm light, showing a peak intensity at the 440 nanometer wavelength, which promotes compact, sturdy growth and robust stems.

# INTRODUCING ADLITE BLUE- THE NEW MEMBER OF THE ADLITE FAMILY (440NM)

1. Highly effective in regulating key physiological and morphological processes in plants.
2. Promotes compact growth and sturdy stems.

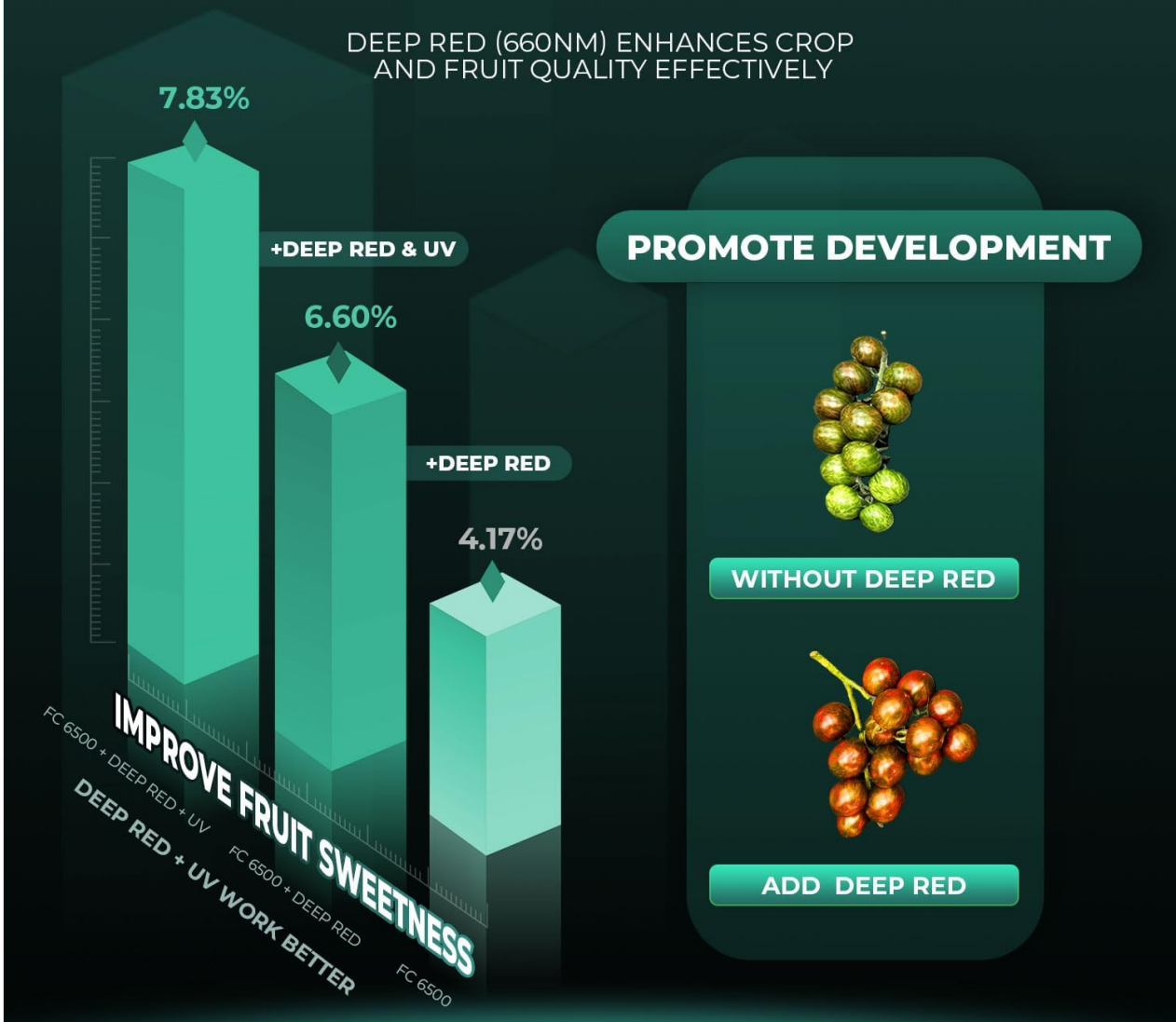


\*UV light can enhance plant resistance, but avoid using it with blue light as it may slow plant growth.

Two potted plants are shown side-by-side, demonstrating the difference in growth. The plant on the right, grown with ADLITE BLUE light, appears fuller and sturdier than the plant on the left, grown without it.

# WHAT HAPPENS AFTER ADDING ADLITE DEEP RED

DEEP RED (660NM) ENHANCES CROP  
AND FRUIT QUALITY EFFECTIVELY



A bar chart illustrating the percentage increase in fruit sweetness when Deep Red (660nm) and UV light are added to a grow setup, compared to Deep Red alone or no supplemental light.

## Recommended Usage

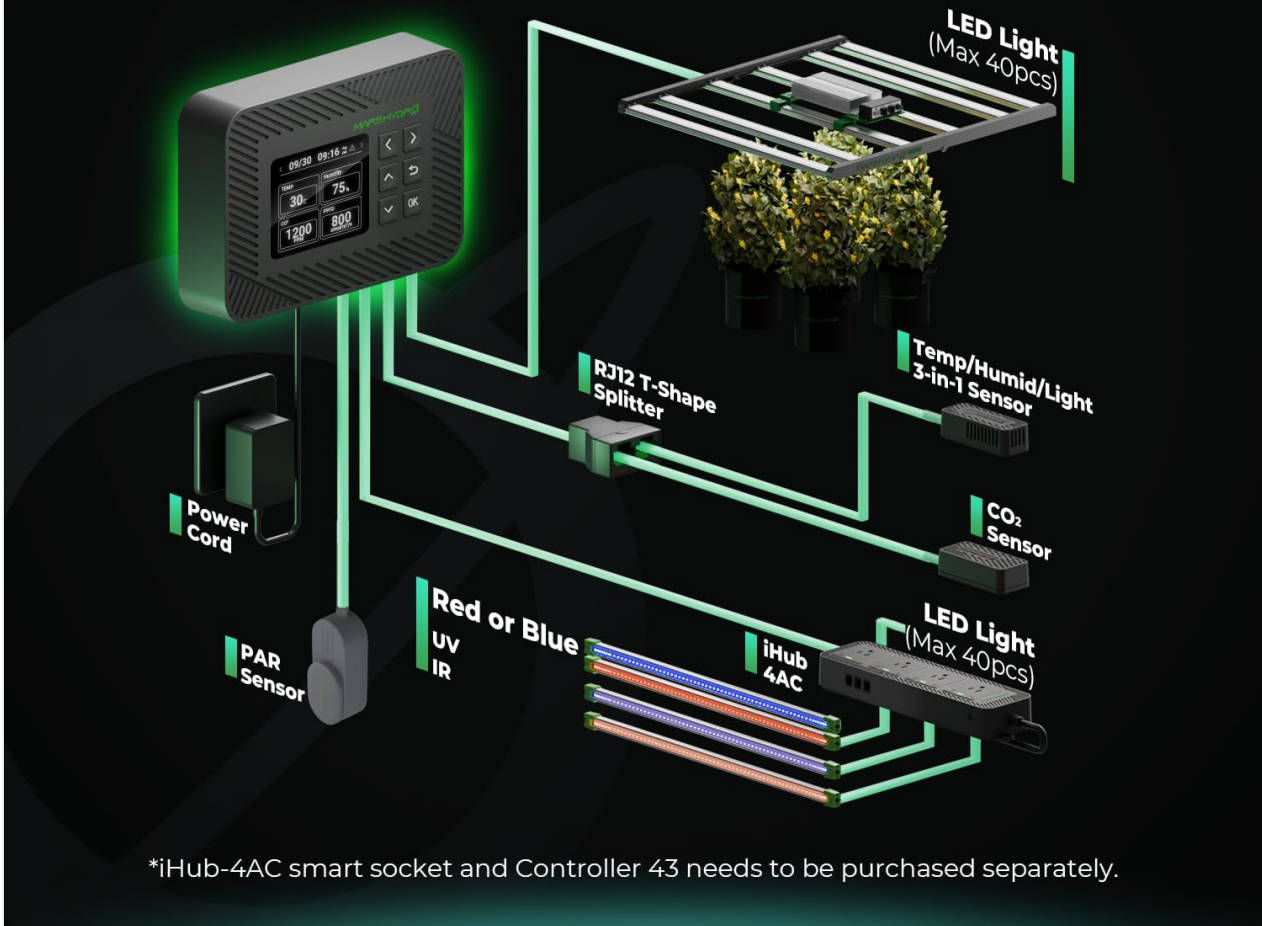
The usage time for ADlite Red30 and Blue30 should generally align with your main light's operating cycle. For specific recommendations based on growth stage:

- **Vegetative Stage:** Use ADlite Blue30 in sync with your main light.
- **Flowering Stage:** Use ADlite Red30 in sync with your main light.

*Note:* During the Vegetative Stage, avoid using UV and Blue light simultaneously, as it may slow down plant growth. Always adjust usage based on specific plant needs, environmental conditions, and stress factors. Excessive use may cause side effects.

# SUPPORT INTELLIGENT CONTROL

Supports integration with smart devices for automated control, enabling effortless optimal plant care.



A visual guide detailing the recommended daily usage times for different ADlite spectrums (Blue, UV, IR, Deep Red) during the vegetative and flowering stages of plant growth, along with important usage tips.

## Pairing Suggestions

For optimal performance, consider pairing your ADlite lights with compatible MARS HYDRO main LED models and tent sizes:



A table providing recommendations for pairing ADlite UV/IR/Red/Blue 30 and 55 models with specific MARS HYDRO LED grow light models (e.g., FC1500, TS1000) and corresponding tent sizes (e.g., 2'x2', 5'x5').

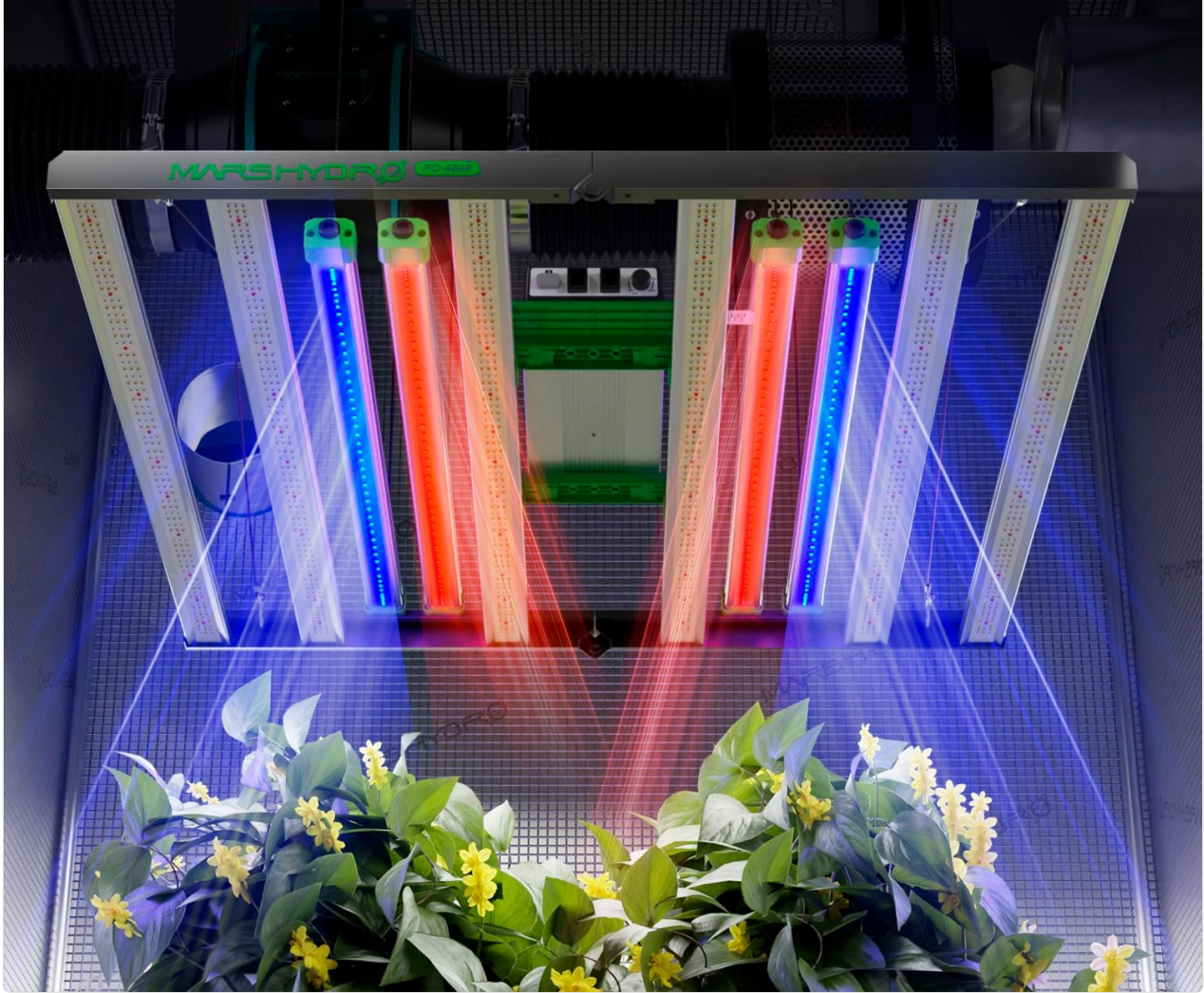
## Intelligent Control Support

The ADlite system supports integration with smart devices for automated control, enabling effortless optimal plant care. This requires additional components such as the iHub 4AC smart socket and Controller 43, which are sold separately.



A schematic diagram illustrating how the ADlite lights can integrate with a smart control system, including sensors for PAR, temperature, humidity, light, and CO2, connected via an iHub 4AC smart socket and Controller 43 (sold separately).

# INCREASE YIELD UP TO 30%



An overhead view inside a grow tent, showing the MARS HYDRO ADlite Red and Blue supplemental light bars mounted above plants, illustrating their application in an indoor growing environment.

## MAINTENANCE

Regular maintenance ensures the longevity and efficiency of your ADlite grow lights.

- **Cleaning:** Periodically wipe the light bars with a soft, dry cloth to remove dust and debris. Ensure the lights are unplugged and cool before cleaning. Do not use abrasive cleaners or solvents.
- **Inspection:** Regularly inspect power cords and connections for any signs of damage or wear. Replace any damaged components immediately.
- **Storage:** If storing the lights for an extended period, ensure they are clean, dry, and stored in a cool, dry place away from direct sunlight and extreme temperatures.

## TROUBLESHOOTING

This section addresses common issues you might encounter with your ADLite grow lights.

Problem	Possible Cause	Solution
Light bars do not turn on	No power supply; Loose connection; Faulty power cord/adapter	Check if the power outlet is working. Ensure all connections are secure. Try a different power outlet. Inspect the power cord for damage.
Lights flicker or dim	Unstable power supply; Loose connection; Overheating	Ensure stable power. Check all connections. Verify adequate ventilation around the lights. Reduce ambient temperature if possible.
Uneven light distribution	Improper mounting or spacing	Adjust the height and spacing of the light bars to ensure even coverage over your plants. Refer to the mounting section for guidance.
Plants show signs of stress after adding ADLite	Incorrect spectrum usage; Excessive light intensity	Ensure you are using the correct spectrum for the plant's growth stage (Blue for vegetative, Red for flowering). Adjust the light intensity or distance from the canopy if plants show signs of light stress.

## WARRANTY INFORMATION

MARS HYDRO products typically come with a manufacturer's warranty covering defects in materials and workmanship. The specific warranty period and terms may vary. Please retain your proof of purchase for warranty claims.

For detailed warranty information, including coverage duration and claim procedures, please refer to the official MARS HYDRO website or contact their customer support directly.

## CUSTOMER SUPPORT

If you require further assistance, have questions not covered in this manual, or need to report an issue, please contact MARS HYDRO customer support:

- **Website:** Visit the official MARS HYDRO website for FAQs, support resources, and contact forms.
- **Email:** Refer to your product packaging or the official website for the customer support email address.
- **Phone:** Check the official website for available phone support numbers.

When contacting support, please have your product model (ADLITE-RB30) and proof of purchase readily available.

