



[Manuals.plus](#) /

› [YLEEBG](#) /

› YLEEBG T901 10-inch Android Tablet User Manual

YLEEBG T901

YLEEBG T901 10-inch Android Tablet User Manual

Model: T901

INTRODUCTION

This manual provides essential information for the proper use and maintenance of your YLEEBG T901 10-inch Android Tablet. Please read this guide thoroughly before operating the device to ensure optimal performance and longevity. Keep this manual for future reference.

PACKAGE CONTENTS

Verify that all items listed below are included in your package:

- 10-inch Android Tablet
- Bluetooth Keyboard
- Wireless Mouse
- Stylus
- Protective Case
- Protective Film (pre-applied or separate)
- USB Charger
- USB-C Cable
- OTG Cable
- User Manual (this document)

2.4G+5G WiFi Bluetooth 5.0

Fast 5G + 2.4G WiFi and efficient Bluetooth 5.0 wireless connectivity for uninterrupted access to the web and entertainment



2.4G+5G
Ultra-fast network



Bluetooth 5.0
High-fidelity transfer



Image: All components included in the YLEEBG T901 tablet package.

PRODUCT OVERVIEW

Familiarize yourself with the physical components and ports of your YLEEBG T901 tablet.


8000mAh Long-lasting Battery

 **7hrs**
Game

 **10hrs**
Video

 **20hrs**
Music

 **16hrs**
Calling

 **25hrs**
E-Books

 **480hrs**
Standby



Image: Detailed diagram of the YLEEBG T901 tablet's external features and ports.

- **Power Button:** Located on the top edge, used to power on/off or wake/sleep the tablet.
- **Volume Buttons:** Located on the top edge, used to adjust audio volume.
- **Front Camera:** For video calls and selfies.
- **Rear Camera & Flash:** For taking photos and videos.
- **3.5mm Headphone Jack:** For connecting wired headphones.
- **USB-C Port:** For charging and data transfer.
- **Micro TF (SD) Card Slot:** For expanding storage.
- **Speakers:** For audio output.

SETUP GUIDE

1. Initial Charging and Power On

1. Connect the USB-C cable to the tablet's USB-C port and the USB charger. Plug the charger into a power outlet.
2. Allow the tablet to charge for at least 30 minutes before first use, or until the battery indicator shows sufficient charge.
3. Press and hold the **Power Button** until the YLEEBG logo appears on the screen.
4. Follow the on-screen prompts to select your language and region.

2. Connecting to Wi-Fi

1. During initial setup, you will be prompted to connect to a Wi-Fi network. Select your desired network from the list.
2. Enter the Wi-Fi password if required and tap "Connect".
3. To connect later, go to **Settings > Network & internet > Wi-Fi**.

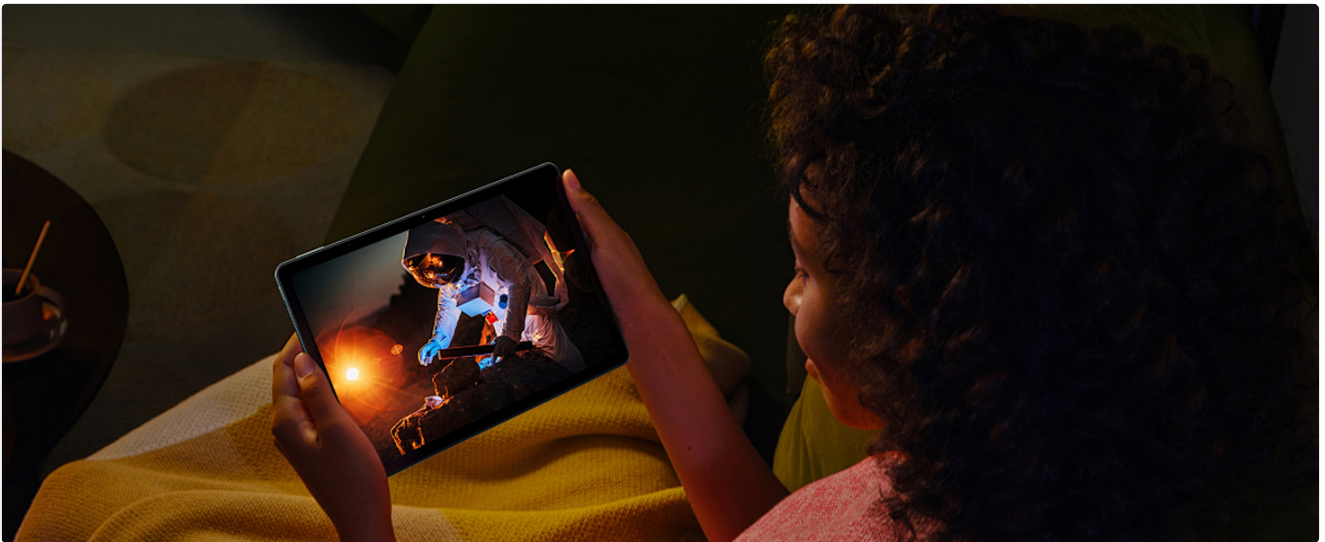


Image: The YLEEBG T901 tablet supports dual-band Wi-Fi for fast and stable internet connectivity.

3. Google Account Setup

Sign in with your Google account to access the Google Play Store, Gmail, and other Google services. If you don't have an account, you can create one during this step.

4. Connecting Bluetooth Accessories (Keyboard, Mouse)

1. Ensure the Bluetooth keyboard and mouse are charged and in pairing mode (refer to their individual manuals for specific instructions).
2. On your tablet, go to **Settings > Connected devices > Bluetooth**.
3. Toggle Bluetooth ON. The tablet will scan for available devices.
4. Select the keyboard or mouse from the list of available devices to pair. Follow any on-screen prompts.

Explore Smoothly, Faster Connect

 **Dual-band Wi-Fi**
2.4G+5G

 **Bluetooth 5.0**
Power Saving

A woman with blonde hair is sitting at a wooden desk, looking at a tablet. The tablet is propped up and displays a video call with four participants. A large green plant is visible in the background.

Image: The YLEEBG T901 tablet with its Bluetooth keyboard and mouse, configured for desktop-like use.

OPERATING INSTRUCTIONS

1. Basic Navigation

- **Tap:** Select an item or open an application.
- **Swipe:** Scroll through screens or lists.
- **Pinch-to-Zoom:** Enlarge or reduce content on the screen.

- **Long Press:** Access contextual menus or move icons.

2. Split-Screen Functionality

The tablet supports split-screen mode for multitasking:

1. Open the first application you wish to use.
2. Tap the "Recent Apps" button (usually a square icon) to view open applications.
3. Long-press the icon of the first app at the top of its card, then select "Split screen".
4. Choose a second application from the recent apps or app drawer to occupy the other half of the screen.



Image: The YLEEBG T901 tablet demonstrating its split-screen feature for enhanced productivity.

3. Downloading Applications (GMS Certified)

Your tablet is GMS certified, allowing full access to the Google Play Store:

1. Open the **Play Store** app from your home screen or app drawer.
2. Search for desired applications (e.g., YouTube, Netflix, Facebook).
3. Tap "Install" to download and install the application.

4. Media Playback (Widevine L1 Support)

The tablet supports Widevine L1, enabling high-definition streaming from platforms like Netflix, Hulu, and Disney+.



Image: The YLEEBG T901 tablet's display and Widevine L1 support for streaming high-definition content.

5. Camera Usage

The tablet features a 5MP front camera and a 13MP rear camera.

1. Open the **Camera** app.
2. Tap the shutter button to take a photo or switch to video mode to record.
3. Use the camera switch icon to toggle between front and rear cameras.



Image: The YLEEBG T901 tablet's dual cameras for capturing photos and videos.

MAINTENANCE

1. Battery Care

- Avoid fully discharging the battery frequently.
- Do not expose the tablet to extreme temperatures.
- Use only the provided charger and cable.



Image: The YLEEBG T901 tablet's 8000mAh battery and its estimated usage duration.

2. Cleaning the Device

- Use a soft, lint-free cloth to clean the screen and body.
- Avoid using harsh chemicals or abrasive materials.

3. Software Updates

Regularly check for and install software updates to ensure optimal performance and security. Go to **Settings > System > System update**.

4. Storage Management

The tablet has 128GB of internal storage, expandable up to 1TB using a Micro SD card.

- To insert a Micro SD card, locate the Micro TF card slot on the side of the tablet and gently insert the card until it clicks into place.
- Manage storage by going to **Settings > Storage**.

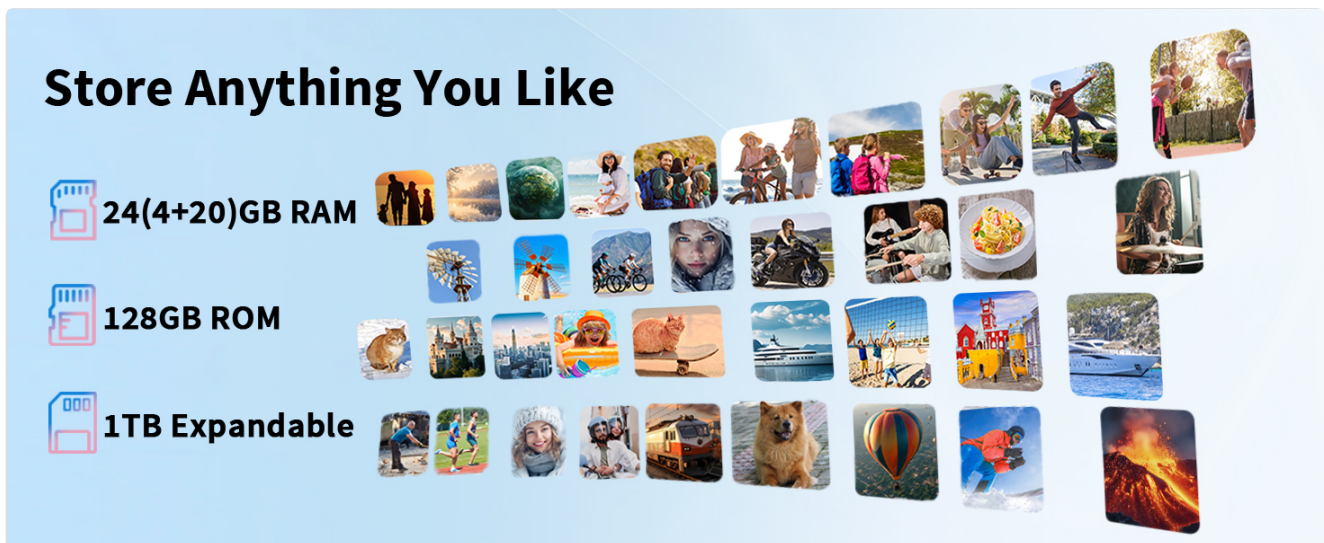


Image: The YLEEBG T901 tablet's ample storage and expansion options.

TROUBLESHOOTING

Problem	Possible Cause	Solution
Tablet does not power on.	Low battery; device frozen.	Charge the tablet for at least 30 minutes. Press and hold the Power Button for 10-15 seconds to force restart.
Cannot connect to Wi-Fi.	Incorrect password; router issue; Wi-Fi disabled.	Verify password. Restart router. Ensure Wi-Fi is enabled in Settings. Try connecting to a different network.
Bluetooth accessories not pairing.	Accessories not in pairing mode; Bluetooth disabled.	Ensure accessories are in pairing mode. Check tablet's Bluetooth settings. Restart both devices.
Tablet is slow or unresponsive.	Too many apps running; low storage; software glitch.	Close unnecessary apps. Clear cache. Free up storage. Restart the tablet.
Battery drains quickly.	High screen brightness; background apps; old battery.	Reduce screen brightness. Close background apps. Check battery usage in Settings.
Apps crashing or not installing.	Insufficient storage; app incompatibility; Play Store cache issue.	Clear Play Store cache and data. Ensure sufficient storage. Check app compatibility with Android 15.

Factory Reset (Last Resort)

If issues persist, a factory reset may resolve them. This will erase all data on your tablet. Back up important data before proceeding.

1. Go to **Settings > System > Reset options**.
2. Select **Erase all data (factory reset)**.
3. Confirm your choice and follow the on-screen instructions.

SPECIFICATIONS

Feature	Detail
Brand	YLEEBG
Model Number	T901
Operating System	Android 15
Processor	T606 Octa-Core (2*A75 + 6*A55)
RAM	24GB (4GB + 20GB Expansion)
Internal Storage (ROM)	128GB
Expandable Storage	Up to 1TB via Micro SD Card
Screen Size	10.1 Inches
Display Resolution	1280 x 800 Pixels (IPS)
Widevine Support	L1
Rear Camera	13MP
Front Camera	5MP
Battery Capacity	8000mAh
Wi-Fi Connectivity	2.4G/5G Dual-band (802.11g)
Bluetooth	Bluetooth 5.0
Ports	USB-C, 3.5mm Headphone Jack, Micro TF Card Slot
Item Weight	3.12 pounds
Product Dimensions	10.7 x 7.5 x 2.5 inches

WARRANTY AND SUPPORT

Warranty Information

Your YLEEBG T901 tablet is covered by a standard manufacturer's warranty. Please refer to the warranty card included in your package or your purchase documentation for specific terms and conditions, including warranty duration and coverage details.

Customer Support

For technical assistance, troubleshooting, or warranty claims, please contact YLEEBG customer support through the retailer where you purchased the product or visit the official YLEEBG website for contact information.

When contacting support, please have your product model (T901) and purchase details readily available.



