

[Manuals.plus](#) /

> [eLinkSmart](#) /

> eLinkSmart Fingerprint Padlock User Manual

eLinkSmart YL-P8bf-OBlack

eLinkSmart Fingerprint Padlock User Manual

Model: YL-P8bf-OBlack

INTRODUCTION

The eLinkSmart Fingerprint Padlock provides advanced, keyless security for various applications. This smart padlock integrates fingerprint recognition and Bluetooth app control, offering convenience and enhanced monitoring capabilities. Its robust design ensures durability for everyday use.



Image: The eLinkSmart Fingerprint Padlock, demonstrating its connectivity with a smartphone and a smartwatch for unlocking.

WHAT'S IN THE BOX

Upon opening your eLinkSmart Fingerprint Padlock package, you will find the following components:

- Fingerprint App Padlock (Obsidian Black)
- USB Charging Cable
- User Manual



Image: The padlock connected to its USB charging cable, illustrating the charging port location.

SETUP

1. App Download and Registration

To begin, download the **eSmartLock** app from your device's App Store (iOS or Android). Follow the on-screen prompts to register your account.

eSmartLock App

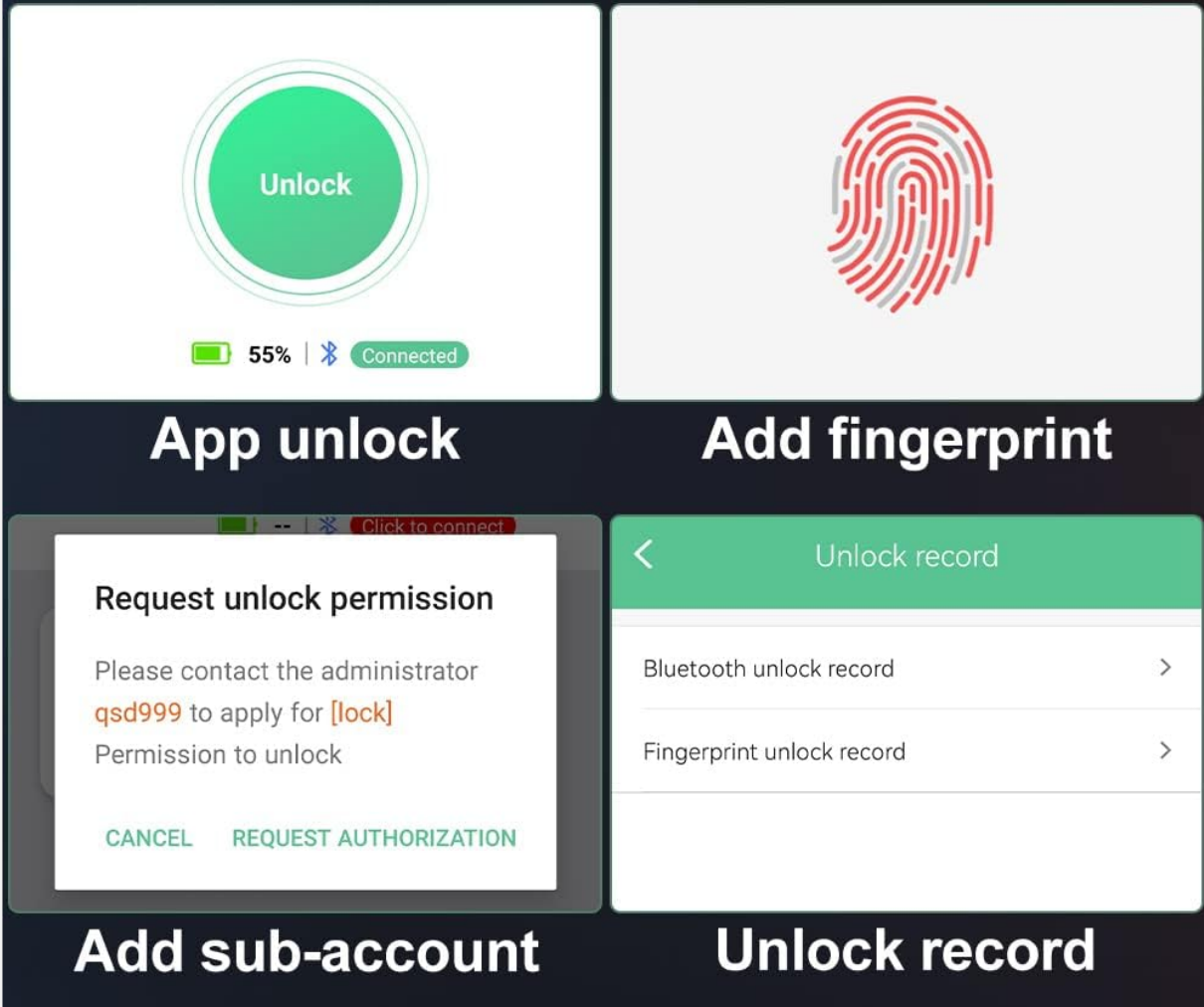


Image: A screenshot of the eSmartLock app interface, highlighting key functions such as unlocking, adding fingerprints, managing sub-accounts, and viewing unlock records.

2. Device Pairing

After registration, open the app and enable Bluetooth on your smartphone. The app will guide you through the process of discovering and pairing with your eLinkSmart padlock. You may also modify the padlock's name within the app for easier identification, especially if you own multiple locks.

3. Fingerprint Registration

Once paired, you can register fingerprints. The padlock supports up to 20 different fingerprints, including 2 administrator fingerprints. Follow these steps:

1. In the app, navigate to the 'Add Fingerprint' section.
2. Place your finger on the padlock's fingerprint sensor.
3. Lift and reposition your finger as instructed by the app to capture different angles of your fingerprint. This typically involves several readings.
4. Ensure your fingers are clean and dry for optimal recognition.
5. Once all readings are complete, your fingerprint will be stored and ready for use.

OPERATING INSTRUCTIONS

1. Fingerprint Unlock

To unlock the padlock using your registered fingerprint, simply place your finger on the fingerprint sensor. The padlock will unlock in approximately 0.1 seconds if the fingerprint is recognized.

2. App Unlock

You can also unlock the padlock via the eSmartLock app. Open the app, ensure your device is connected to the padlock via Bluetooth, and tap the 'Unlock' button. The app allows administrators to authorize family, friends, or colleagues to unlock the padlock, with options to set unlock periods and schedules.



VS



Forgot password



Damaged key



Too many keys

Image: A visual comparison demonstrating both fingerprint and app unlocking methods for the eLinkSmart padlock.

3. Unlock Records

The eSmartLock app maintains a detailed history of all unlock events. This includes unlocks via fingerprint and app, providing a timestamp and the username associated with each unlock. This feature allows you to monitor access to your secured items.

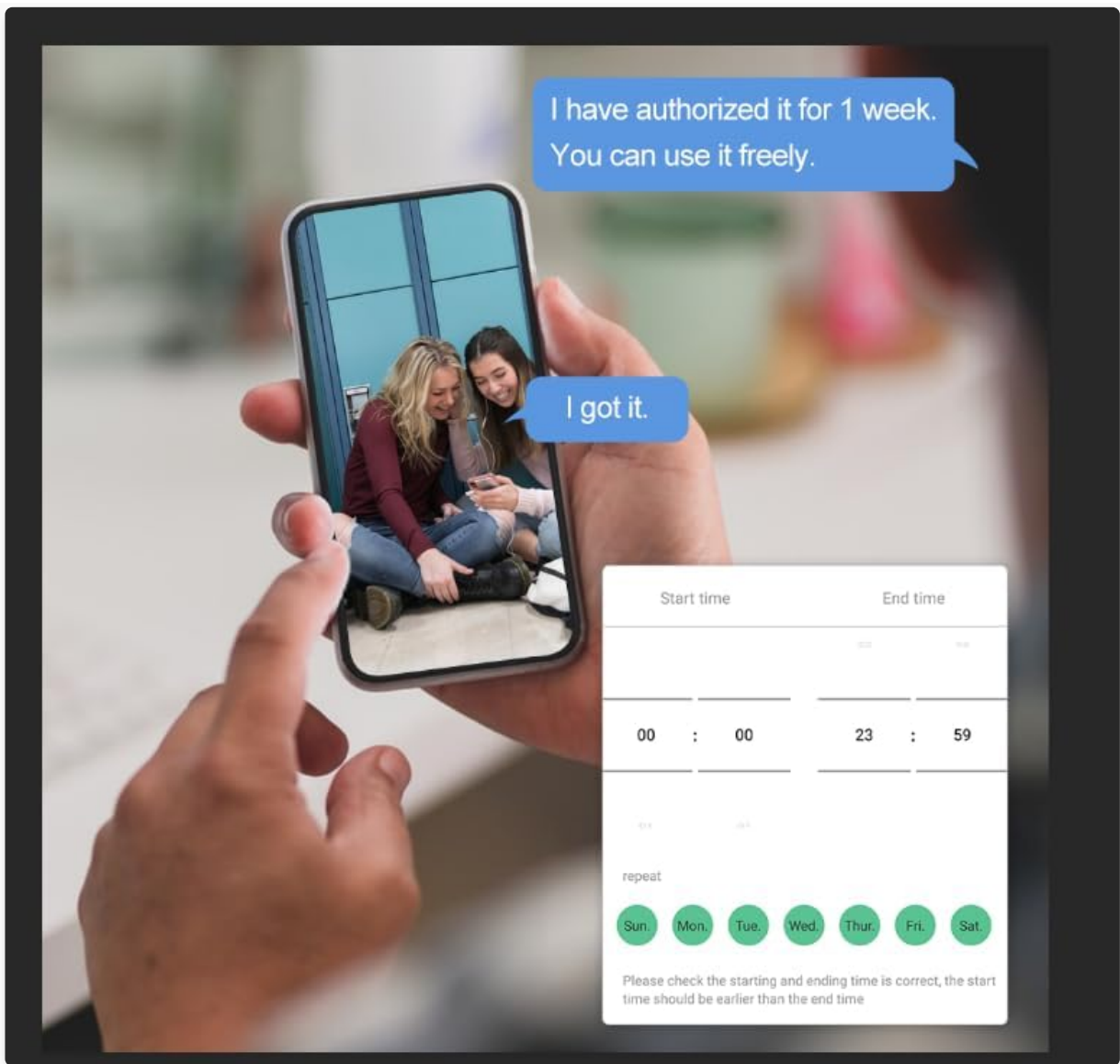


Image: A smartphone screen displaying the eSmartLock app's interface for authorizing users and setting unlock schedules.

MAINTENANCE

Battery Life and Charging

The eLinkSmart padlock is designed for extended use, supporting up to 6 months of standby time or over 2000 unlocks on a single charge. When the battery is low, the padlock will display a red light, and the app will provide voice prompts. To recharge, simply plug in the included USB charging cable to a USB power source or a power bank.



Image: A close-up view of the padlock's micro USB charging port, indicating where to connect the charging cable.

TROUBLESHOOTING

- **App Not Working / App Hangs:** If the eSmartLock app experiences issues or hangs upon opening, try reinstalling the app. Ensure your device's operating system is up to date and that the app has necessary system resource permissions.
- **Fingerprint Recognition Issues (Wet Fingers):** The padlock's fingerprint sensor may not function optimally with wet or pruned fingers (e.g., after swimming or showering). Ensure your fingers are clean and dry before attempting to unlock.
- **Trouble Storing Fingerprints:** If the app and lock have difficulty storing new fingerprints, try renaming the user name for the prints within the app. Sometimes, a simple change in the user profile name can resolve the final step of the registration process.

SPECIFICATIONS

Feature	Detail
---------	--------

Brand	eLinkSmart
Model Name	YL-P8bf-OBlack
Lock Type	Biometric
Control Method	App
Material	Zinc Alloy (Body), Stainless Steel (Shackle)
Color	Obsidian Black
Item Dimensions (L x W x H)	1.3 x 0.59 x 2.31 inches
Item Weight	3.52 ounces
Fingerprint Capacity	Up to 20 (including 2 admin)
Battery Life	6 months standby or 2000+ unlocks
Shackle Diameter	0.4 CM
Recommended Uses	Gym, School & Fence, Toolbox, Cases, Chests, Cabinets



Image: The compact size of the eLinkSmart padlock demonstrated by its placement next to a standard soda can.

Upgraded Tensile Resistance

100 kg

Withstands 100 kg of tensile force



High-Density Zinc Alloy



Stainless Steel Shackles



Pull Test



Image: The padlock attached to a weight, illustrating its upgraded tensile resistance and durability under stress.

WARRANTY & SUPPORT

For information regarding product warranty, technical support, or any inquiries not covered in this manual, please refer to the official eLinkSmart website or contact their customer service directly. Contact details are typically provided on the product packaging or the manufacturer's website.