

## WilTec 65160

# WilTec Ulva+ Electric Hand Sprayer Instruction Manual

Model: 65160

## INTRODUCTION

The WilTec Ulva+ Electric Hand Sprayer is a lightweight and versatile tool designed for efficient garden and crop maintenance. Its ergonomic design and battery-operated functionality make it suitable for both amateur gardeners and professionals for tasks such as weeding, applying liquid products, and general lawn care. This manual provides detailed instructions to ensure safe and effective use of your sprayer.



Image: The WilTec Ulva+ Electric Hand Sprayer, showing its long handle, liquid tank, and nozzle head.

## PRODUCT FEATURES

- **Lightweight and Maneuverable:** Designed for ease of use, simplifying garden tasks.
- **Robust 1-Liter Tank:** Made from polypropylene (PP) for excellent chemical resistance, allowing prolonged work without frequent refills.
- **Durable Aluminum Tube:** Features a 3.8 cm aluminum tube, resistant to wear and harsh conditions, ensuring consistent and regular flow.
- **Interchangeable Nozzles:** Includes three different nozzles (yellow, red, black) for precise spray adjustment based on application needs.
  - Yellow Nozzle: Approximately 45 ml/min (e.g., for biological control agents)
  - Red Nozzle: Approximately 65 ml/min (e.g., for growth regulators)
  - Black Nozzle: Approximately 115 ml/min (e.g., for fertilizers)
- **Battery-Operated:** Powered by 1.5V replaceable batteries (5 x LR20/D batteries required, not included), providing significant autonomy for cordless operation.

# Grand volume



Image: The WilTec Ulva+ Sprayer highlighting its 1-liter tank capacity, suitable for extended use.

# Vaporisation très fine

3 buses différentes



**Taille des gouttelettes : 35–90  $\mu\text{m}$**   
p. ex. pour agents de contrôle biologique



**Taille des gouttelettes : 35–100  $\mu\text{m}$**   
p. ex. régulateurs de croissance



**Taille des gouttelettes : 35–105  $\mu\text{m}$**   
p. ex. fertilisants

Image: Close-up view of the sprayer head demonstrating the three interchangeable nozzles (yellow, red, black) and their respective droplet sizes and recommended uses.



# Pulvérisation fonctionnant sur pile

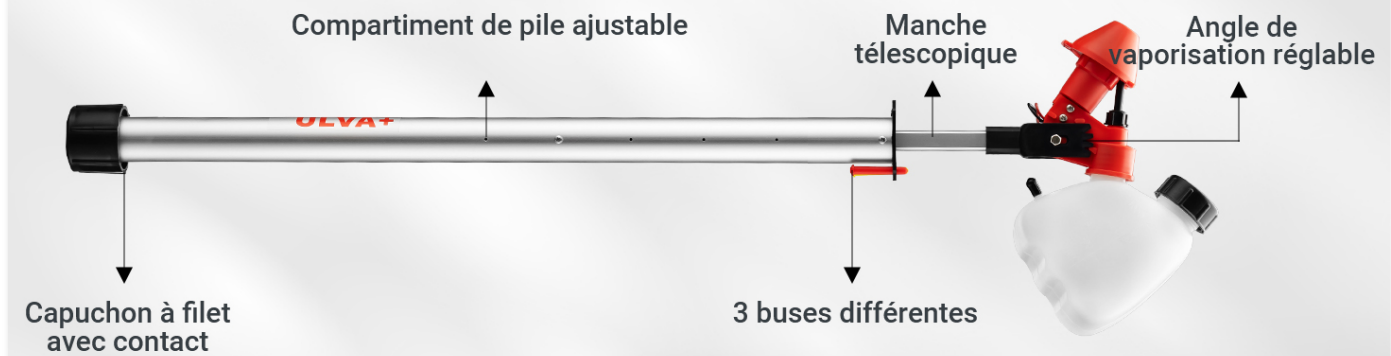


Image: Diagram illustrating the key components of the battery-operated sprayer, including the adjustable battery compartment, telescopic handle, and adjustable spray angle.

## SETUP

### 1. Battery Installation:

The sprayer requires 5 x LR20 / 1.5V (D-cell) batteries (not included). Locate the battery compartment, typically at the base of the handle. Unscrew the cap and insert the batteries, ensuring correct polarity (+/-) as indicated inside the compartment. Securely reattach the cap.

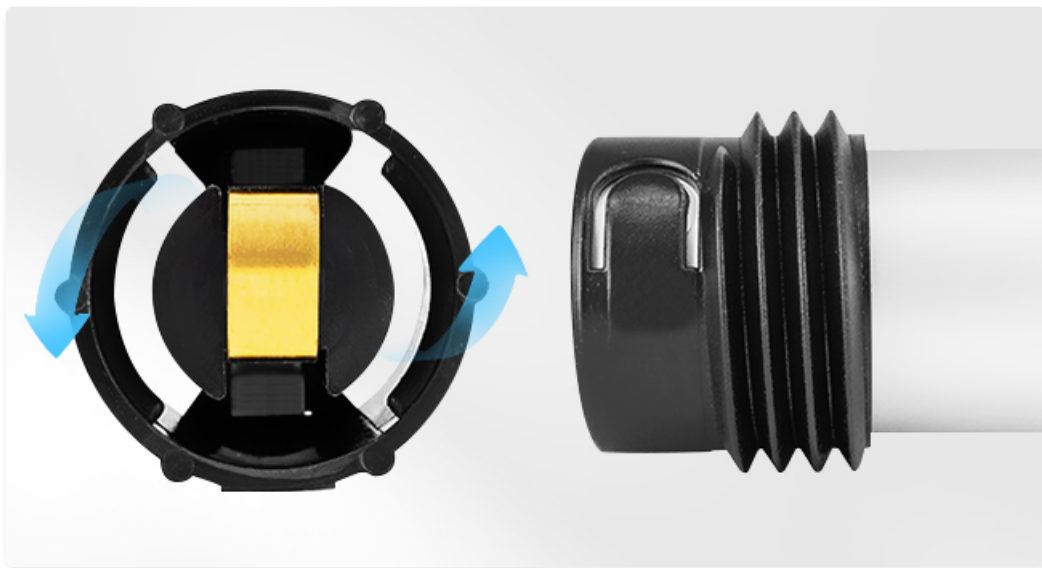


Image: Detail of the threaded cap with contact for the battery compartment.

### 2. Nozzle Attachment:

Select the appropriate nozzle (yellow, red, or black) based on your desired spray rate and application. Gently twist or click the chosen nozzle onto the sprayer head until it is securely in place.

### 3. Filling the Tank:

Unscrew the cap of the 1-liter liquid tank. Carefully pour your desired liquid product (e.g., herbicide, fertilizer, pesticide) into the tank, ensuring not to overfill. Securely screw the cap back on.

## OPERATING INSTRUCTIONS

### 1. Power On:

Once batteries are installed and the tank is filled, locate the power switch or button on the sprayer handle. Press it to

activate the sprayer. You should hear a low hum as the motor starts.

## 2. **Spraying:**

Point the nozzle towards the area you wish to spray. The sprayer will automatically atomize the liquid into a fine mist. Maintain a consistent distance from the target for even coverage.



Image: A person demonstrating the use of the WilTec Ulva+ Sprayer in a garden setting, showing the fine mist being applied to plants.

## 3. **Adjusting Spray Angle (if applicable):**

Some models may feature an adjustable spray angle. Refer to the diagram in the "Product Features" section for details on how to adjust the angle for different applications.

## 4. **Changing Nozzles:**

To change nozzles, power off the sprayer and ensure no liquid is actively spraying. Carefully remove the current nozzle and replace it with the desired one, ensuring it clicks securely into place.

## 5. **Power Off:**

When finished spraying, press the power switch or button again to turn off the device. Always turn off the sprayer before storing or performing maintenance.



# Approprié à chaque phase de croissance



## Bourgeons

Prévention de maladies précoce



## Fleurs

Contrôle des nuisibles



## Fruits verts

Prévention de dommages durant la croissance



## Fruits mûrs

Prévention de pourriture



Image: Visual guide showing the suitability of the sprayer for different growth stages of plants, from buds to ripe fruits, for various treatments.

## Large gamme d'applications



Tomates



Maïs



Pommes de terre



Concombres

Image: Examples of various plants (tomatoes, corn, potatoes, cucumbers) illustrating the wide range of applications for the sprayer.

## MAINTENANCE

### • Cleaning the Tank:

After each use, especially when changing liquid types, empty any remaining liquid from the tank. Rinse the tank thoroughly with clean water. For stubborn residues, use a mild detergent and warm water, then rinse multiple times.

### • Cleaning Nozzles:

Remove the nozzle and rinse it under running water. If clogged, use a small brush or needle to clear any blockages. Do not use harsh chemicals that could damage the nozzle material.

### • Battery Care:

If the sprayer will not be used for an extended period, remove the batteries to prevent leakage and corrosion. Store batteries in a cool, dry place.

### • Storage:

Store the sprayer in a clean, dry place, away from direct sunlight and extreme temperatures. Ensure the tank is empty and clean before storage.

## TROUBLESHOOTING

Problem	Possible Cause	Solution
Sprayer does not turn on.	<ul style="list-style-type: none"><li>Batteries are dead or incorrectly installed.</li><li>Power switch is faulty.</li></ul>	<ul style="list-style-type: none"><li>Check battery polarity and replace with fresh batteries.</li><li>Contact customer support if switch is faulty.</li></ul>
Weak or inconsistent spray.	<ul style="list-style-type: none"><li>Low battery power.</li><li>Nozzle is clogged.</li><li>Insufficient liquid in tank.</li></ul>	<ul style="list-style-type: none"><li>Replace batteries.</li><li>Clean the nozzle thoroughly.</li><li>Refill the tank.</li></ul>
Liquid leakage.	<ul style="list-style-type: none"><li>Tank cap not securely tightened.</li><li>Damaged O-ring or seal.</li></ul>	<ul style="list-style-type: none"><li>Ensure tank cap is tightly sealed.</li><li>Inspect seals for damage; contact support for replacement parts.</li></ul>



SPECIFICATIONS

Attribute	Value
Product Dimensions (L x W x H)	125 x 3.8 x 23 cm
Weight	0.74 kg (740 grams)
Model Number	65160
Power Source	Battery-operated (5 x LR20 / 1.5V D-cell batteries, not included)
Tank Capacity	1 Liter (Polypropylene - PP)
Tube Material	Aluminum (3.8 cm diameter)
Nozzles Included	3 (Yellow: ~45 ml/min, Red: ~65 ml/min, Black: ~115 ml/min)
ASIN	B0DPL1933P

# Dimensions du produit

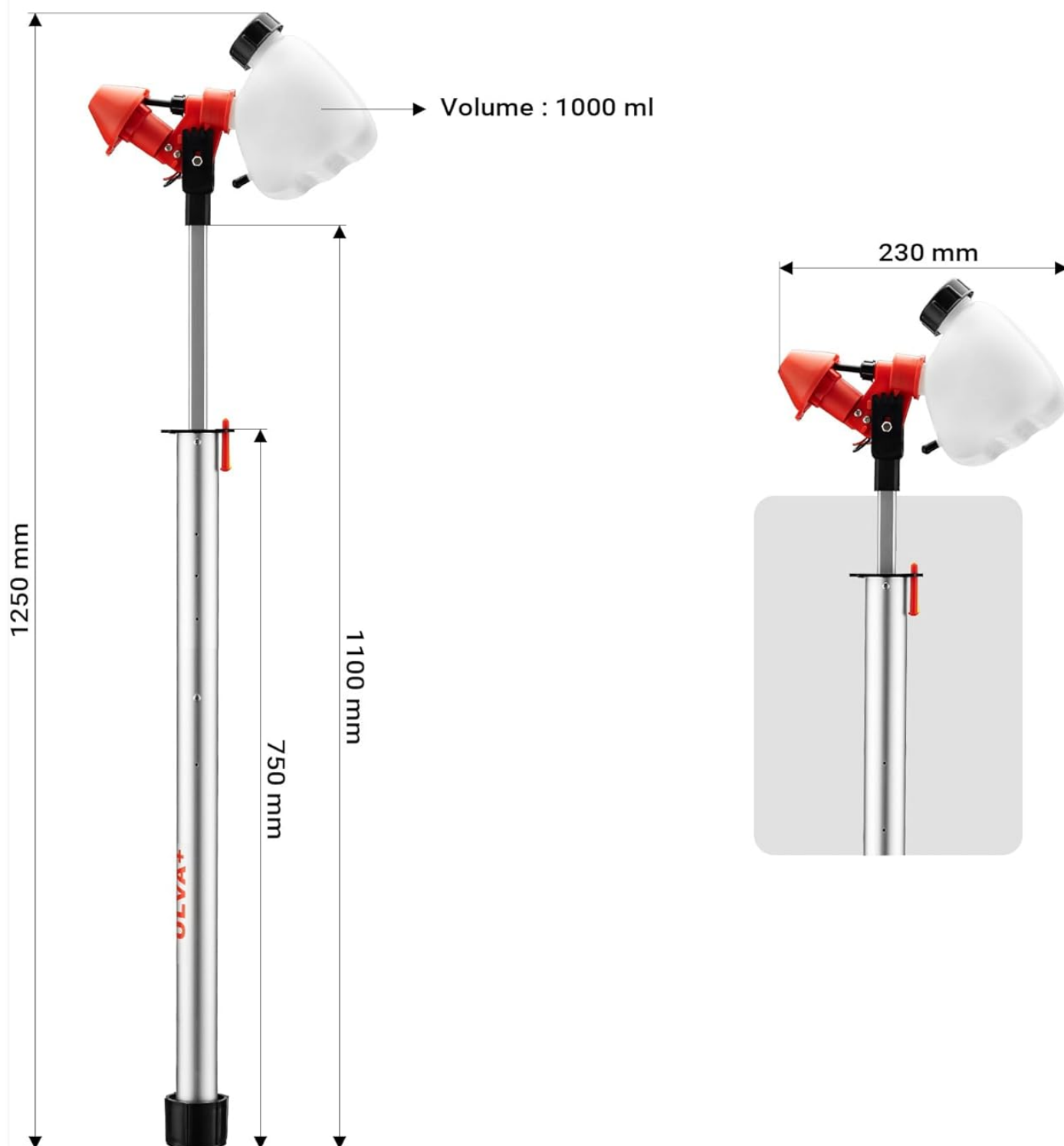


Image: Detailed diagram showing the dimensions of the WilTec Ulva+ Sprayer, including overall length and tank volume.

## WARRANTY AND SUPPORT

WilTec products are designed for durability and performance. While specific warranty details are not provided in this manual, standard consumer rights and return policies apply. For any questions, technical assistance, or to inquire about replacement parts, please contact WilTec customer support.

You can often find support information on the official WilTec website or through the retailer where you purchased the product. Please have your model number (65160) and purchase details ready when contacting support.

For returns, please refer to the return policy of your point of purchase. Typically, a 30-day refund/replacement policy is offered.

