

ALVAR AAP73252302

ALVAR AAP73252302 Refrigerator Door Shelf Instruction Manual

Model: AAP73252302

INTRODUCTION

This manual provides instructions for the installation and maintenance of the ALVAR AAP73252302 Refrigerator Door Shelf. This replacement part is designed for specific LG and Kenmore refrigerator models to restore or enhance your refrigerator's storage capacity.

PRODUCT FEATURES

The ALVAR AAP73252302 Refrigerator Door Shelf is engineered with the following characteristics:

- **Premium Quality Material:** Constructed from food-grade material, ensuring safety for direct contact with food items. The material is designed for durability and resistance to wear.
- **Reinforced Design:** Features a reinforced structure and mounting hooks for enhanced strength and load-bearing capacity, providing stable support for stored items.
- **Precise Fit:** Engineered with accurate dimensions and perfectly matched mounting slots for a secure and stable fit in compatible refrigerator models.



Upgraded Material

Safe Food Grade & Long Lasting



Reinforced Mounting Hooks

Perfect Fit & Easy To Install



Fit Tightly

Excellent Load Capacity & Not Easy To Break

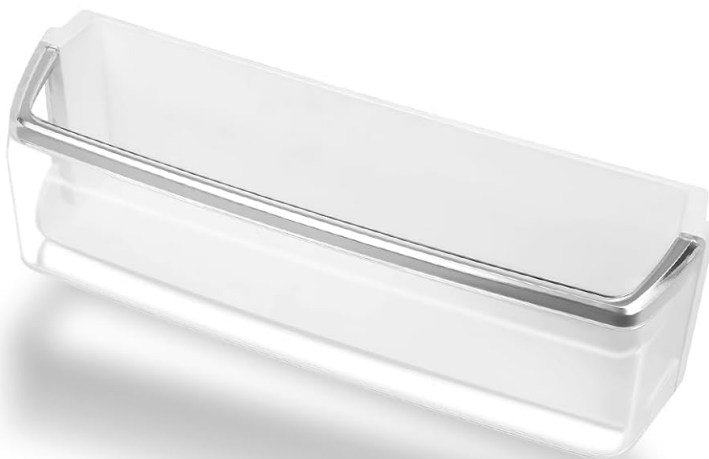


Image: A composite image showing details of the AAP73252302 door shelf, including its food-grade material, reinforced mounting hooks, and how it fits securely.

PACKAGE CONTENTS

Your package includes the following items:

- 2 x ALVAR AAP73252302 Refrigerator Door Shelf Bins



Image: Two clear plastic refrigerator door shelves with silver-colored front trim, indicating a 2-pack.

SPECIFICATIONS

Feature	Detail
Model Number	AAP73252302
Material	Food-grade plastic, reinforced design
Product Dimensions (approx.)	12.4 inches (top width) x 13.0 inches (bottom width) x 3.4 inches (height) x 3.7 inches (depth)
Item Weight	Approximately 2.53 pounds (for the pair)
Compatibility	LG and Kenmore refrigerators (upper left side door)

AAP73252302

Kenmore/LG Refrigerator Door Shelf



Image: A diagram illustrating the key dimensions (width, height, depth) of the AAP73252302 door shelf, shown next to a refrigerator.

COMPATIBILITY

This AAP73252302 refrigerator door shelf is designed for the **upper left side door** of specific LG and Kenmore refrigerator models. Please verify your refrigerator's model number and the existing part number before installation to ensure proper fit.

Compatible Part Numbers:

- AAP73252302
- AAP73252305
- AAP73252306
- AAP73252301
- AAP73252304
- AAP73252309
- AAP73252308
- AAP73252311
- AAP73252313

- AP5602874
- 2652315
- AH3637059
- EA3637059
- PS3637059

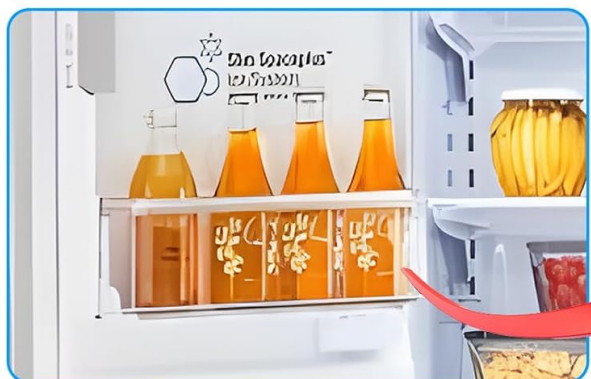
Compatible Refrigerator Models (Partial List):

This is a partial list. If your model is not listed, please compare your existing shelf's dimensions and part number.

- **LG Models:** LFX31945ST/00, LFX31945ST/05, LFX31945ST/06, LFX31945ST/07, LFXC24726S/00, LFXC24726S/01, LFXC24726S/02, LFXC24726S/03, LFXC24726S/04, LMXC23796S/00, LMXC23796S/01, LMXC23796D/00, LMXC23796M/00, LMXS30796S/00, LMXS30796S/01, LMXS30796D/00, LFX25991ST/00, LFX25991ST/01, LFX25991ST/02, LFX25991ST/05, LFX25991ST/06
- **Kenmore Models:** 795.72042012, 795.72042110, 795.72042111, 795.72042112, 795.72042313, 795.72042316, 795.72043012, 795.72043110, 795.72043111, 795.72043112, 795.72043313, 795.72043316, 795.72049012, 795.72049111, 795.72049112, 795.72049313

AAP73252302 Fridge Door Shelf Replacement

Fit Models(Not All)



LG

LFX31945ST/00	LFX31945ST/05	LFX31945ST/06	LFX31945ST/07	LFXC24726S/00	LFXC24726S/01
LFXC24726S/02	LFXC24726S/03	LFXC24726S/04	LMXC23796S/00	LMXC23796S/01	LMXC23796D/00
LMXC23796M/00	LMXS30796S/00	LMXS30796S/01	LMXS30796D/00	LFX25991ST/00	LFX25991ST/01
LFX25991ST/02	LFX25991ST/05	LFX25991ST/06	etc		

Kenmore

795.72042012	795.72042110	795.72042111	795.72042112	795.72042313	795.72042316
795.72043012	795.72043110	795.72043111	795.72043112	795.72049313	795.72049316
795.72052110	795.72052111	795.72052113	795.72052114	795.72052116	795.72052313
795.72053110	795.72053112	795.72053113	795.72053114	795.72059111	795.72059112
795.72059113	795.72059114	795.72059116	795.72062110	795.72062112	795.72062312
795.72062313	795.72062315	795.72062316	795.72063110	795.72063111	795.72063112
795.72063315	795.72063317	795.72069110	795.72069111	795.72069112	795.72069212
795.72069316	795.72092310	795.72092311	795.72093310	795.72093311	795.72182210
795.72182211	795.72182315	795.72183210	795.72183211	795.72183315	etc

If not sure, please send us your fridge model and we can help you to confirm.

Image: A graphic displaying a comprehensive list of LG and Kenmore refrigerator models compatible with the AAP73252302 door shelf.

INSTALLATION INSTRUCTIONS

The AAP73252302 refrigerator door shelf is designed for easy installation. No tools are typically required.

1. **Identify the Slot:** Locate the designated slot on the upper left side of your refrigerator door where the shelf is to be installed. Ensure it matches the dimensions and hook configuration of the new shelf.
2. **Align the Shelf:** Hold the new AAP73252302 door shelf, aligning its reinforced mounting hooks with the corresponding slots in the refrigerator door liner.
3. **Slide into Place:** Gently slide the shelf downwards into the slots until it clicks securely into position. Ensure it is level and firmly seated.
4. **Verify Stability:** Lightly tug on the installed shelf to confirm it is stable and will not easily dislodge.

PERFECT FIT FOR EASY INSTALLATION

Simply slide the
AAP73252302 **LEFT** door bin
into the designated slot on
the refrigerator door for a
secure and seamless fit.



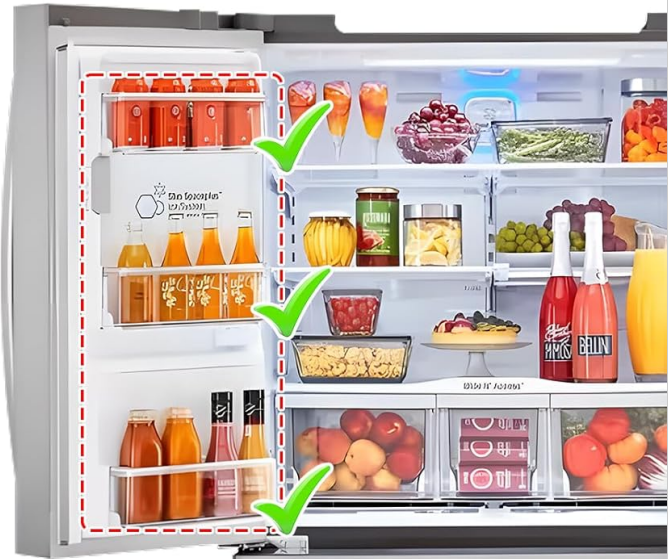
Image: A visual guide showing the AAP73252302 door shelf being slid into the designated slot on a refrigerator door for installation.

AAP73252302 Kenmore/LG Refrigerator Door Bin

Fit the **UPPER LEFT** Side Door



AAP73252302
Door Bin Shelf



Replace Part Number

AAP73252302	AAP73252301	AAP73252304
AAP73252305	AAP73252306	AAP73252309
AAP73252308	AAP73252311	AAP73252313
AP5602874	2652315	AH3637059
EA3637059	PS3637059	

Image: An illustration of the AAP73252302 door shelf correctly positioned within a refrigerator door, alongside a list of compatible part numbers.

CARE AND MAINTENANCE

To ensure the longevity and cleanliness of your ALVAR AAP73252302 refrigerator door shelf, follow these simple maintenance guidelines:

- **Cleaning:** Regularly clean the shelf with mild soap and warm water. Avoid abrasive cleaners or harsh chemicals, as these can damage the plastic.
- **Drying:** Ensure the shelf is completely dry before placing it back into the refrigerator.
- **Load Capacity:** While designed to be durable, avoid overloading the shelf with excessively heavy items to prevent stress or damage.
- **Inspection:** Periodically inspect the shelf for any signs of wear or damage.

TROUBLESHOOTING

If you encounter issues with your AAP73252302 refrigerator door shelf, consider the following:

- **Shelf Does Not Fit:** Double-check your refrigerator's model number and the existing part number against the compatibility list in this manual. Ensure you are attempting to install it in the correct position.

(upper left side door).

- **Shelf Feels Loose:** Ensure the shelf is fully seated in its designated slots. Apply gentle downward pressure until it clicks firmly into place. Inspect the mounting hooks for any obstruction or damage.
- **Shelf Appears Damaged:** If the shelf arrived damaged or becomes damaged during normal use within the warranty period, please contact customer support.

WARRANTY AND CUSTOMER SUPPORT

The ALVAR AAP73252302 Refrigerator Door Shelf comes with a **1-Year Warranty** from the date of purchase.

For warranty claims, product inquiries, or technical assistance, please contact ALVAR customer support.

Provide your product model number (AAP73252302) and proof of purchase when contacting support.

Contact information for ALVAR can typically be found on the original product packaging or through the retailer where the product was purchased.