



[Manuals.plus](#) /

› [FEZIBO](#) /

› FEZIBO Electric Standing Desk User Manual

FEZIBO 40 x 24 Inches Sit Stand Home Office Desk

FEZIBO Electric Standing Desk User Manual

Model: 40 x 24 Inches Sit Stand Home Office Desk

INTRODUCTION

This manual provides comprehensive instructions for the assembly, operation, and maintenance of your FEZIBO Electric Standing Desk. Please read this manual thoroughly before assembly and use to ensure safe and efficient operation.



Image: The FEZIBO Electric Standing Desk, showcasing its sleek design and ample workspace for a laptop, monitor, and other office essentials.

SETUP AND ASSEMBLY

Follow these steps carefully to assemble your FEZIBO Electric Standing Desk. It is recommended to have a clear, spacious area for assembly. All necessary tools and hardware are included.

Assembly Video Guide

Your browser does not support the video tag.

Video: A detailed installation guide for the FEZIBO Electric Standing Desk, demonstrating each step of the assembly process from unpacking to final setup.

Key Assembly Steps

1. **Unpack Components:** Carefully remove all parts from the packaging. Verify all components and hardware are present against

the included parts list.

2. **Assemble Leg Frames:** Attach the motor rod to the leg frames (Leg A and Leg B), ensuring the motor faces upwards as shown in the video.
3. **Attach Crossbar:** Secure the crossbar to the leg frames. Note that the side with four bigger holes should face towards the end of the pillars, and this side faces the floor.
4. **Tighten Frame Screws:** Once the frame is assembled, tighten all screws to ensure stability.
5. **Assemble Desktop:** Insert the wooden dowels into the pre-drilled holes on the desktop panels. Secure the metal connecting plates to join the desktop halves.
6. **Attach Frame to Desktop:** Carefully place the assembled frame onto the underside of the desktop, aligning the screw holes. Secure the frame to the desktop using the provided screws.
7. **Connect Controller and Cables:** Attach the control panel to the underside of the desk. Connect the motor and power cables to the control box.
8. **Cable Management:** Use the included cable ties and clips to neatly organize and secure all cables, preventing interference with desk movement.

x2

Desk Hooks

Hook your head phones and bags



Frame Base

Enhance the stability of the desk

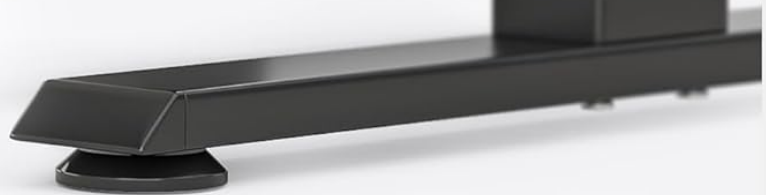


Image: Detail of the desk's frame base and convenient desk hooks for headphones or bags, illustrating the sturdy construction.

OPERATING INSTRUCTIONS

Your FEZIBO Electric Standing Desk is designed for ease of use with its intuitive control panel.

Height Adjustment

- Press the **^** (Up) button to raise the desk.
- Press the **v** (Down) button to lower the desk.
- The desk will move smoothly and quietly to your desired height.

Memory Presets

The desk features two programmable memory height buttons for quick adjustments to your preferred sitting and standing positions.

1. Adjust the desk to your desired height using the Up/Down buttons.
2. Press and hold either the **1** or **2** button for 3 seconds until you hear a beep or see a confirmation light. The height is now saved to that preset.
3. To recall a saved height, simply press the corresponding **1** or **2** button.

Reset Function (Calibration)

If the desk is not functioning correctly or needs recalibration, perform a reset:

1. Ensure the protective film is peeled off the control panel.
2. Press and hold the **^** (Up) and **v** (Down) buttons simultaneously for 5 seconds.
3. The desk will move to its lowest position and then slightly rise, indicating the reset is complete. The display will show "Reset Done" or a similar confirmation.

Setting Adjustment

Set and adjust custom height with ease

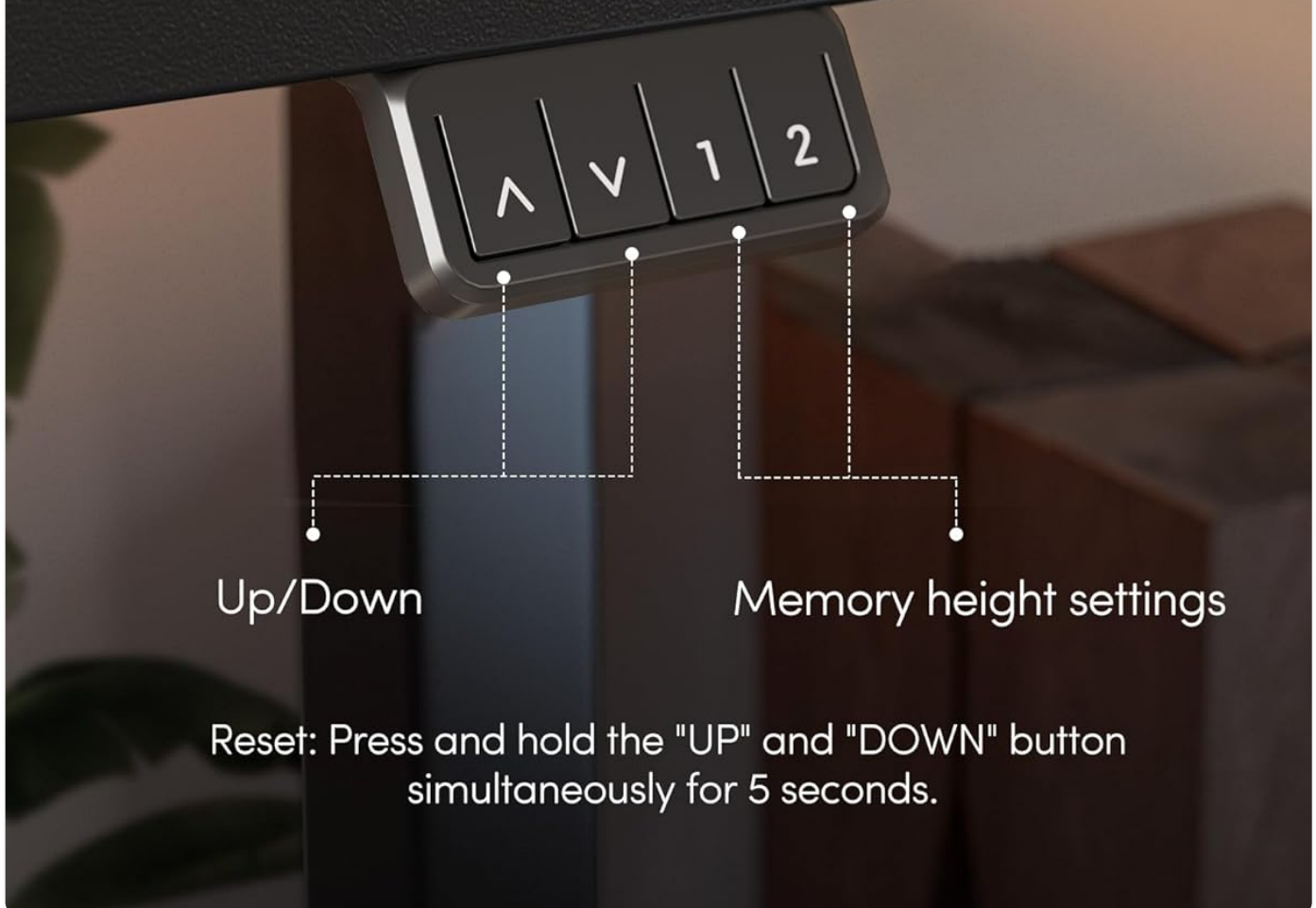


Image: The intuitive control panel, allowing users to easily adjust height and save preferred positions.

Anti-Collision Technology

The FEZIBO Electric Standing Desk is equipped with an anti-collision system for safety. If the desk encounters an obstacle while moving up or down, it will automatically stop and reverse approximately 2cm to prevent damage or injury.

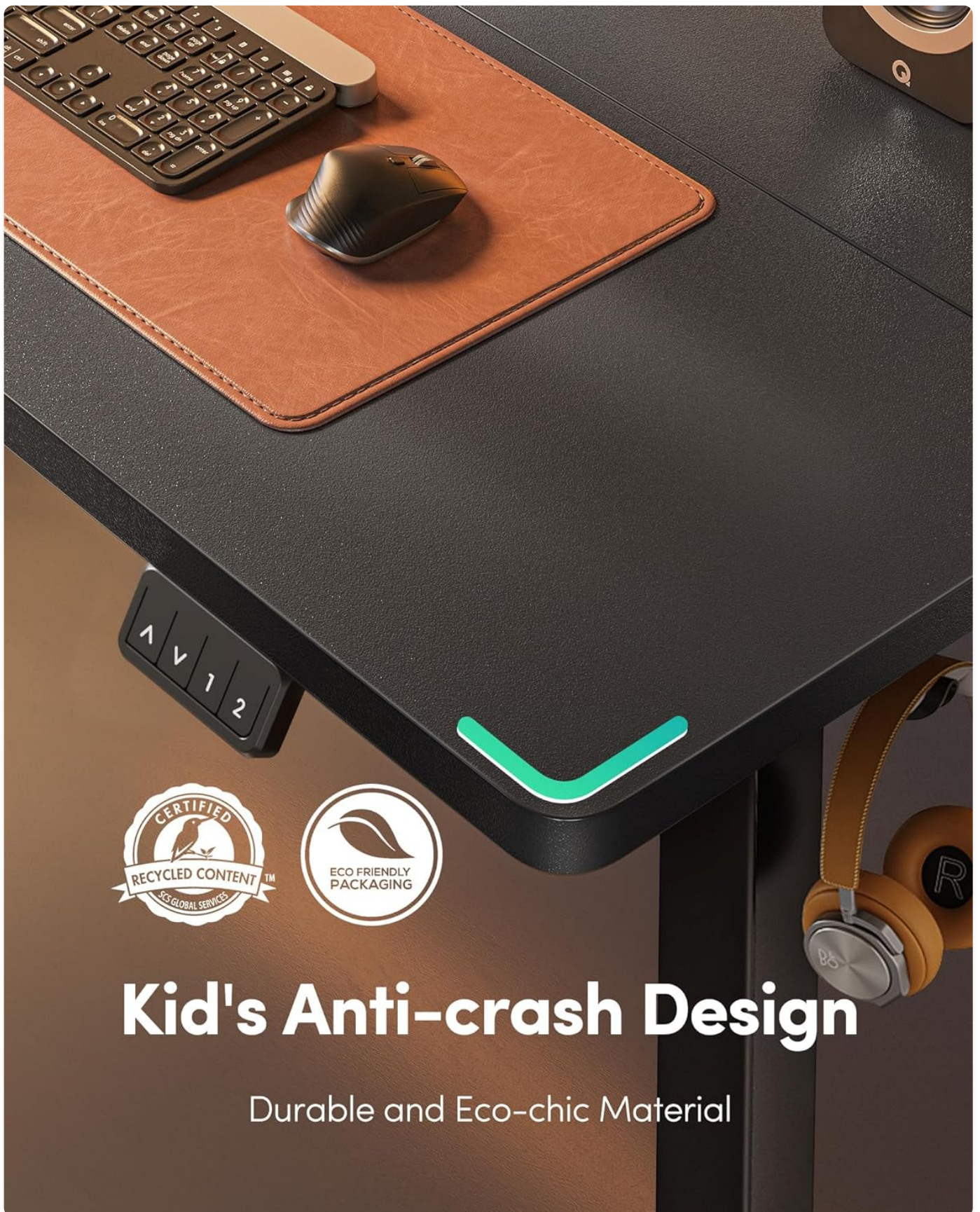


Image: The anti-collision technology ensures safety by stopping and reversing the desk if an obstruction is detected during movement.

MAINTENANCE

Regular maintenance ensures the longevity and optimal performance of your standing desk.

- **Cleaning:** Wipe surfaces with a soft, damp cloth. Avoid harsh chemicals or abrasive cleaners that could damage the finish.
- **Cable Management:** Periodically check and secure all cables to prevent snagging or damage during height adjustments.

Ensure cables are not taut at any height.

- **Screw Tightness:** Occasionally check and tighten all assembly screws to maintain the desk's stability and structural integrity.
- **Motor Care:** Keep the motor area free from dust and debris. Do not attempt to lubricate or disassemble the motor.

TROUBLESHOOTING

If you encounter any issues with your FEZIBO Electric Standing Desk, please refer to the following common solutions:

Problem	Possible Cause	Solution
Desk does not move / No power	Power cable disconnected or loose.	Check all power connections. Ensure the desk is plugged into a working wall outlet, not a power strip that might lose connection when the desk moves.
Desk stops moving or moves erratically	Obstruction detected by anti-collision system.	Remove any obstacles in the desk's path. Perform a reset (calibration) as described in the Operating Instructions.
Desk not reaching desired height / Inconsistent height	Needs calibration or reset.	Perform a reset (calibration) as described in the Operating Instructions.
Unstable desk	Loose screws or uneven floor.	Check and tighten all assembly screws. Adjust the leveling feet on the desk legs if the floor is uneven to ensure proper balance.

SPECIFICATIONS

Feature	Detail
Brand	FEZIBO
Product Dimensions (D x W x H)	24"D x 40"W x 27"H
Color	Black
Style	Modern
Base Material	Alloy Steel
Top Material Type	Wood
Finish Type	Laminated
Included Components	Desk, Keyboard Tray, Headphone Hook
Maximum Height	45 Inches
Minimum Height	28.3 Inches
Required Assembly	Yes
Motor Noise Level	Under 50 dB

Feature	Detail
Anti-Collision System	Yes
Memory Height Presets	2

Product Dimensions

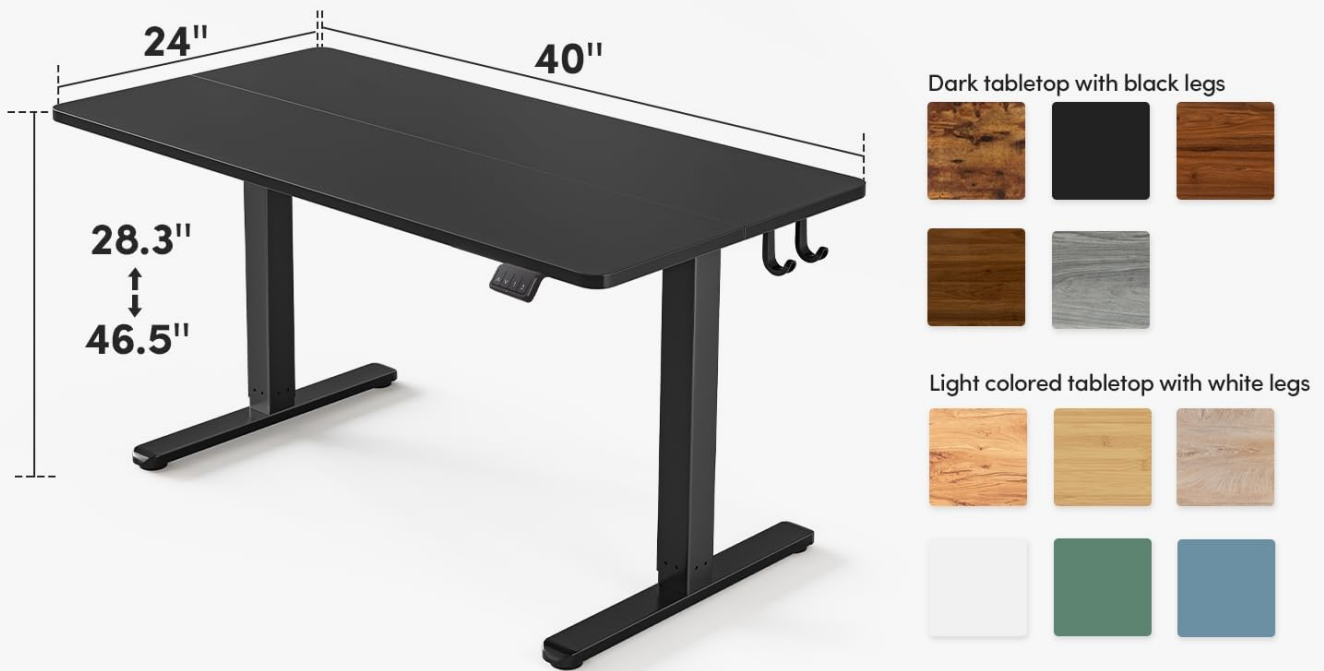


Image: Product dimensions, illustrating the adjustable height range from 28.3 inches to 46.5 inches.

WARRANTY AND SUPPORT

Your FEZIBO Electric Standing Desk comes with a limited warranty. For specific warranty details, please refer to the documentation included with your purchase or visit the official FEZIBO website.

For technical support, assembly assistance, or any questions regarding your product, please contact FEZIBO customer service. Contact information can typically be found on the manufacturer's website or in your product packaging.

Online Resources:

- [Visit the FEZIBO Store on Amazon](#)