

Hiwill A512

Hiwill Nimbus A512 5.1.2ch Dolby Atmos Soundbar User Manual

Model: AT-S512W | Brand: Hiwill

INTRODUCTION

Welcome to the user manual for your Hiwill Nimbus A512 5.1.2ch Dolby Atmos Soundbar. This advanced home theater system is designed to deliver an immersive audio experience with its 11-driver configuration, including up-firing and side-firing speakers, and a powerful 6.5-inch wireless subwoofer. This manual provides comprehensive instructions for setup, operation, maintenance, and troubleshooting to help you maximize your soundbar's performance.



The Hiwill Nimbus A512 soundbar system, featuring the main soundbar unit, a wireless subwoofer, and two wired rear surround speakers, integrated into a modern living room setup with a large television, demonstrating its comprehensive home theater capabilities.

WHAT'S IN THE BOX

Please verify that all the following components are included in your package:

- Soundbar Unit
- Wireless 6.5-inch Subwoofer
- Wired Surround Speakers (x2)
- HDMI ARC Cable
- Digital Optical Cable
- Stereo 3.5mm to 3.5mm Audio Cable

- Remote Control
- Wall Mounted Kit
- User Manual (this document)
- Power Cable

SETUP GUIDE

1. Placement

Optimal placement of your soundbar system is crucial for the best audio experience. Consider the following:

- **Soundbar:** Place the soundbar centrally below your TV, ensuring it is not obstructed. It can be wall-mounted or placed on a TV tabletop.
- **Wireless Subwoofer:** Position the subwoofer on the floor, ideally near the front of the room or beside your couch. Its wireless connectivity offers flexibility.
- **Rear Surround Speakers:** Place the two wired rear surround speakers behind your primary listening position, facing towards you. These speakers are designed to enhance ambient sounds and special effects.

Beyond 5.1.2

Elevating Dolby Atmos Spatial Audio Frontiers



An illustration of the Hiwill Nimbus A512 sound system setup in a living room, demonstrating the placement of the soundbar, wireless subwoofer, and two rear surround speakers to achieve a 'Beyond 5.1.2' immersive audio experience with Dolby Atmos.

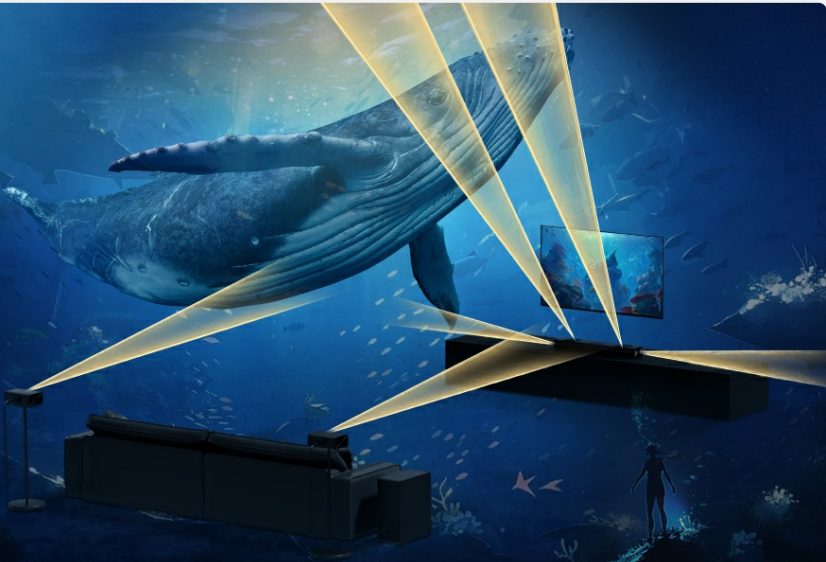
2. Connections

Connect your soundbar to your television or other audio sources using the provided cables. HDMI eARC/ARC is recommended for optimal performance, especially for Dolby Atmos content.

- **HDMI eARC/ARC:** Connect the HDMI ARC cable from the soundbar's eARC/ARC port to your TV's HDMI ARC/eARC port. This allows for high-quality audio transmission and TV remote control of the soundbar.
- **Optical:** For TVs without HDMI ARC, use the Digital Optical Cable to connect the soundbar's OPTICAL port to your TV's optical output.
- **AUX:** Use the 3.5mm audio cable for connecting devices with a 3.5mm audio output.
- **USB:** Insert a USB flash drive for firmware updates or playing compatible audio files.
- **Bluetooth:** For wireless audio streaming from mobile devices, select the Bluetooth input mode on the soundbar.



A Tailor Theater All to Yourself



A comparison table outlining the best connection methods for your soundbar, detailing audio quality, Dolby Atmos support, and recommended ratings for HDMI eARC, HDMI ARC, Optical, Bluetooth, and AUX connections.

Best Connection Methods

Connection Method	Audio Quality	Supports Dolby Atmos	Recommendation Rating
HDMI eARC	Best (uncompressed high-res audio)	Fully supported	★★★★★
HDMI ARC	Good (compressed audio)	Partially supported	★★★★★
Optical	Fair (compressed audio)	Not supported	★★★
Bluetooth	Fair (wireless transmission)	Not supported	★★
AUX	Poor (stereo audio)	Not supported	★

*Partially supports" means that HDMI ARC can only support Atmos transmitted via Dolby Digital Plus, but not Dolby TrueHD Atmos

A detailed table explaining the key differences between HDMI eARC and HDMI ARC, providing insights into bandwidth, audio format support, channel capabilities, audio quality, latency, and compatibility requirements.

OPERATING YOUR SOUNDBAR

Key Features and Audio Technologies

- **Dolby Atmos:** Experience immersive spatial audio with a three-dimensional sound field, allowing sound to come from various directions.
- **Hiwill HXS-Processing:** Our next-generation technology designed for crystal-clear vocals and vivid audio details, enhancing dialogue clarity.
- **11-Driver System:** The soundbar features 4 front drivers, 2 rear drivers, 2 up-firing drivers, and 2 side-firing tweeters, working with the 6.5" wireless subwoofer for a comprehensive soundstage.



An animated graphic demonstrating the 360-degree spatial precision positioning achieved with Dolby Atmos technology, illustrating how sound emanates from the soundbar and rear speakers to create an enveloping audio experience.

The latest upgrade content

- ✓ Enhanced Sound Quality
- ✓ Reduced Default Volume
- ✓ Auto LED Off (30s)
- ✓ Softer Screen Brightness
- ✓ Smart Memory Function
- ✓ Expanded Surround Soundstage
- ✓ Clearer Dialogue & Deeper Bass
- ✓ Fast and stable subwoofer connection



**Firmware
Upgrade**

**Note: We have prepared the firmware for you in advance
please get it through us.**

An exploded diagram showcasing the internal components of the Hiwill Nimbus A512 soundbar, detailing its 11 drivers and the separate 6.5-inch wireless subwoofer, emphasizing the 450W peak power for high-dimensional spatial audio.

11 Drivers

Achieving Higher-dimensional Spatial Audio

450W

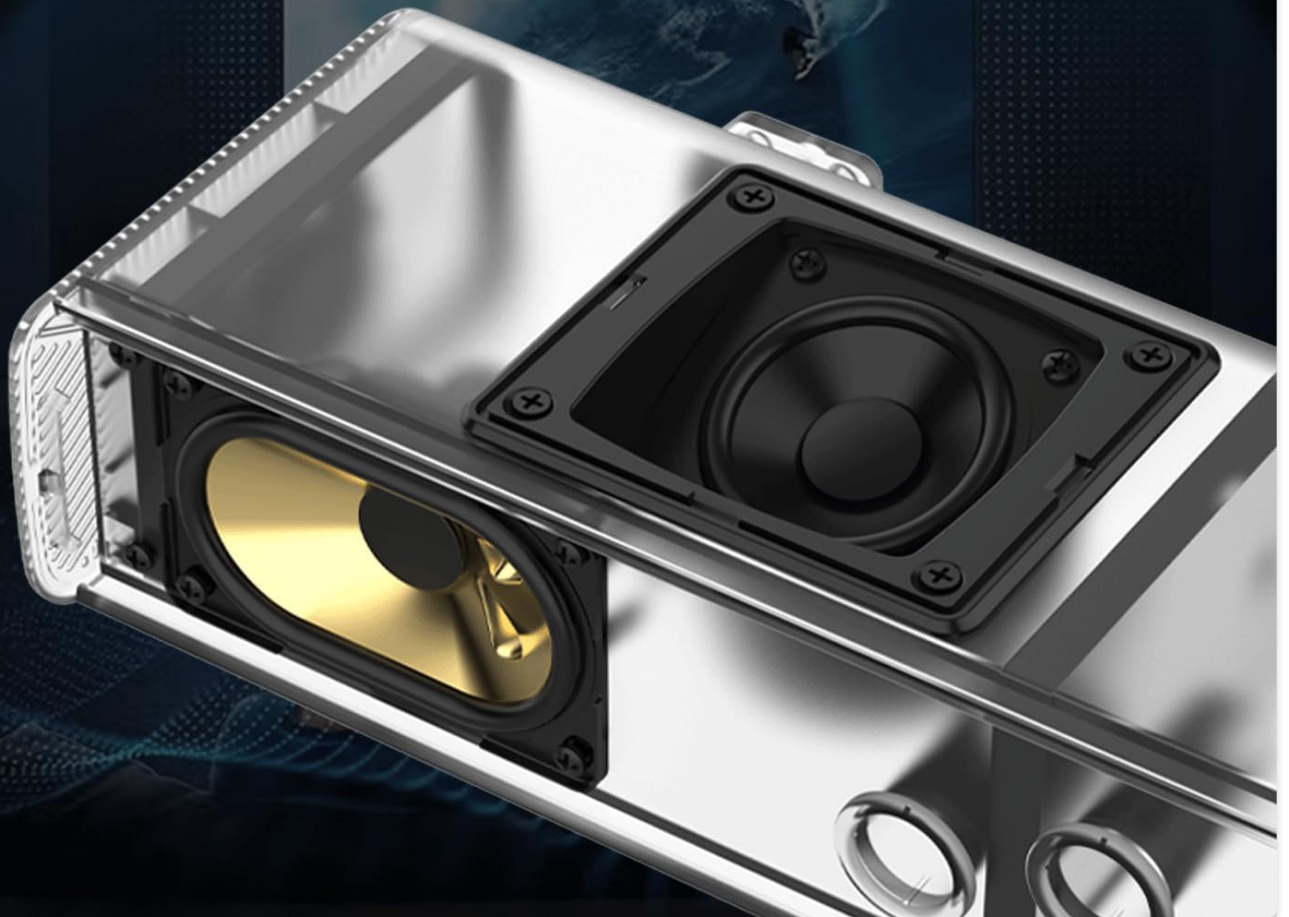
Peak Power



A close-up view of the Hiwill soundbar highlighting its two up-firing drivers, which project sound upwards to reflect off the ceiling, enhancing the stereo and surround sound experience for a more immersive audio.

2 Up-firing Drivers

Up-firing drivers enhance the stereo and surround sound experience by projecting sound upwards and reflecting sound waves, providing a more immersive audio experience



A detailed image of the Hiwill soundbar's side-firing tweeters, shown with an exploded view of their internal components, illustrating how they contribute to a wider sound field and clearer highs for a balanced and rich audio performance.

2 Side-firing Tweeters

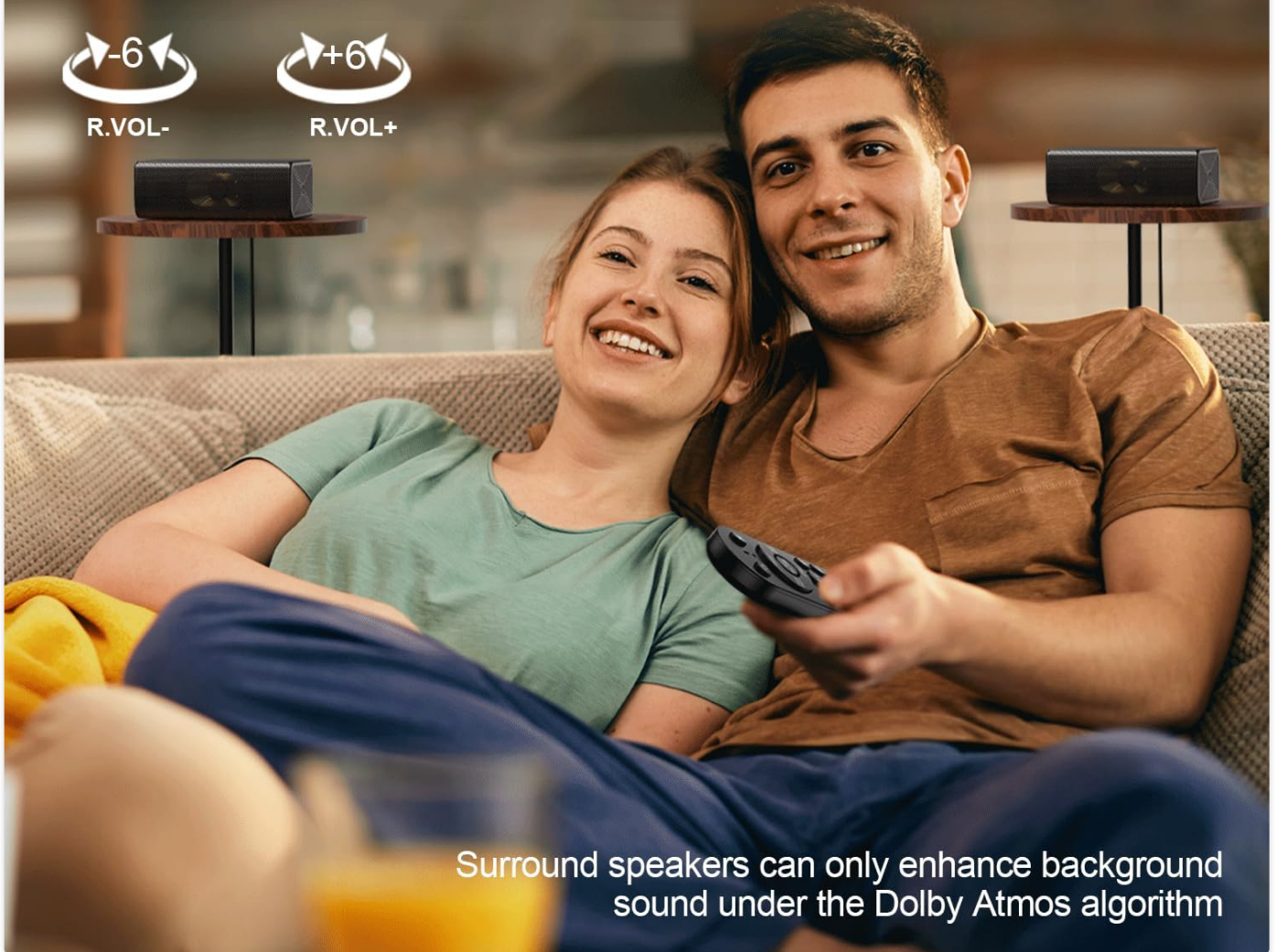
Ensure wider sound field and clearer highs making the overall sound performance more balanced and rich



A visual of two wired rear surround speakers from the Hiwill Nimbus A512 system, positioned behind a couple on a couch, highlighting their role in creating a 360-degree cinematic sound experience with 12 levels of independent volume adjustment.

2 Rear Wired Surround Speakers

360° Cinematic Sound Experience



Surround speakers can only enhance background sound under the Dolby Atmos algorithm

The 6.5-inch wireless subwoofer of the Hiwill Nimbus A512 system, shown positioned next to a couch, is optimized to efficiently reproduce low-frequency sounds, delivering powerful and deep bass for an impactful and engaging audio experience.

Remote Control and Adjustments

Use the included remote control to manage your soundbar's settings:

- **Volume Control:** Adjust the overall system volume.
- **Input Selection:** Switch between HDMI eARC/ARC, Optical, AUX, USB, and Bluetooth inputs.
- **Bass Adjustment:** Control the intensity of the subwoofer's bass output.
- **Rear Speaker Volume:** Independently adjust the volume of the rear surround speakers (12 levels available).
- **EQ Modes:** Select from various equalizer presets for different content types (e.g., Movie, Music, News).

MAINTENANCE

To ensure the longevity and optimal performance of your Hiwill soundbar system, follow these maintenance guidelines:

- **Cleaning:** Use a soft, dry cloth to wipe down the soundbar, subwoofer, and speakers. Avoid using liquid cleaners or abrasive materials.
- **Ventilation:** Ensure proper airflow around all components to prevent overheating. Do not block ventilation openings.
- **Environment:** Keep the system away from direct sunlight, heat sources, excessive dust, and moisture.
- **Power:** Unplug the system from the power outlet during lightning storms or when unused for extended periods.

TROUBLESHOOTING

If you encounter any issues with your soundbar, refer to the following common problems and solutions:

Problem	Possible Cause / Solution
No Sound	Check power connections for all components. Verify correct input source selected on soundbar. Ensure TV audio output is set to external speakers (e.g., PCM or Passthrough). Check cable connections (HDMI, Optical, AUX).
Subwoofer / Rear Speakers Not Connecting	Ensure subwoofer is powered on and within range. Check wired connections for rear speakers to the subwoofer. Restart both soundbar and subwoofer.
Sound Distortion / Poor Quality	Adjust volume levels; avoid excessively high volumes. Check audio source quality. Ensure cables are securely connected. Consider updating firmware (see Firmware Update section).
Display Brightness Too High	The latest firmware update includes reduced display brightness and automatic turn-off after 30 seconds. Update your firmware if not already done.

FIRMWARE UPDATE GUIDE

Hiwill is committed to providing continuous firmware updates to enhance performance and introduce new features. Follow these steps to update your soundbar's firmware:

Your browser does not support the video tag.

Official Hiwill video guide demonstrating the universal firmware upgrade process for their soundbars, including steps for downloading the firmware, preparing a USB drive, and initiating the update.

Firmware Update Steps:

- Step 1: Download Firmware**
Download the latest firmware file (e.g.,spupdate.bin) and place it in the root directory of a USB flash drive. Ensure the USB drive is formatted correctly (FAT32).
- Step 2: Prepare Soundbar**
Turn the soundbar on (or restart it) and switch its input mode to**USB**.
- Step 3: Insert USB Drive**
Insert the USB flash drive containing the firmware file into the USB port on the back of the soundbar.
- Step 4: Initiate Update**

Using the remote control, press and hold the **[Play/Pause]** button. Continue holding until a number is displayed on the soundbar's screen. The numbers will count up (e.g., 19, 29, 39, ... 99).

5. Step 5: Completion

When "HI" appears on the soundbar's display, it indicates that the firmware update is successful.

After Installation:

After the firmware update is complete, unplug the soundbar's power supply. Wait for a few seconds, and then plug it back in. This ensures the firmware is fully applied and the installation is successful.

TV Audio Settings After Upgrade:

After the upgrade, it is crucial to check your TV's audio output settings and set it to **PASSTHROUGH** for optimal performance, especially for Dolby Atmos content. If 'PASSTHROUGH' is not available, look for 'Bitstream' or 'Auto'.

General Path: TV Settings > Sound > Audio Processing > Select "Off" > Digital Audio Output > Select "Passthrough".

Finally, restart the soundbar to enjoy the upgraded sound!



A visual representation of the firmware upgrade cycle, highlighting key improvements such as enhanced sound quality, smart memory

function, expanded surround soundstage, clearer dialogue, deeper bass, reduced default volume, auto LED off, softer screen brightness, and fast/stable subwoofer connection.

SPECIFICATIONS

Feature	Detail
Model Name	AT-S512W
Speaker Type	Soundbar
Surround Sound Channel Configuration	5.1.2
Speaker Maximum Output Power	450 Watts
Connectivity Technology	Auxiliary, Bluetooth 5.3, USB, Optical, HDMI eARC/ARC
Audio Output Mode	Surround, 3D Spatial Audio
Wireless Communication Technology	Bluetooth
Subwoofer Connectivity Technology	Wireless
Subwoofer Diameter	6.5 Inches
Control Method	Remote
Product Dimensions	4.65"D x 23.23"W x 2.28"H
Item Weight	16.96 pounds
Mounting Type	Wall-mounted, or placed on a TV tabletop
Manufacturer	Hiwill
Country of Origin	China
Date First Available	January 20, 2025





WARRANTY AND SUPPORT

Your Hiwill Nimbus A512 Soundbar comes with a**Limited Warranty**. For specific warranty terms and conditions, please refer to the warranty card included in your product packaging or contact Hiwill customer support.

For technical assistance, troubleshooting beyond this manual, or to obtain the latest firmware updates, please contact Hiwill Technologies Inc. directly. Our support team is dedicated to providing you with the best possible experience.

Contact Information: Please refer to the official Hiwill website or your product packaging for the most up-to-date contact details.



 <p>Model Number: AT-S512W Product Name: AT-S512W Brand: Hiwill</p> <p>规格: 12. 18. 2019 规格书尺寸: 125x200mm (含包装) (单位: 厘米)</p>	<p>Hiwill AT-S512W Soundbar User Manual</p> <p>User manual for the Hiwill AT-S512W soundbar system, providing setup, connection, operation, and specifications. Includes safety instructions, accessory list, pairing guide, connection methods (ARC, Optical, AUX, BT), control panel and remote functions, placement options, and technical specifications.</p>
 <p>Model Number: A51 PRO Product Name: A51 PRO Brand: Hiwill</p> <p>规格: 12. 18. 2019 规格书尺寸: 125x200mm (含包装) (单位: 厘米)</p>	<p>Hiwill A51 PRO Dolby Atmos Soundbar User Manual</p> <p>User manual for the Hiwill A51 PRO soundbar with Dolby Atmos. Includes setup instructions, safety information, connectivity options (eARC, Optical, AUX, Bluetooth), remote control functions, wall mounting guide, and specifications.</p>
 <p>Model Number: A312 Product Name: A312 Brand: Hiwill</p> <p>规格: 12. 18. 2012 规格书尺寸: 125x200mm (含包装) (单位: 厘米)</p>	<p>Hiwill A312 Soundbar User Manual</p> <p>This user manual provides comprehensive instructions for the Hiwill A312 soundbar system, covering setup, connections (ARC, Optical, AUX, Bluetooth), operation via the control panel and remote, placement options, wall mounting, and technical specifications. It also includes important safety information and compliance details.</p>
 <p>Model Number: D20 Product Name: D20 Brand: Hiwill</p> <p>规格: 12. 18. 2019 规格书尺寸: 145x105mm (含包装) (单位: 厘米)</p>	<p>Hiwill D20 Soundbar User Manual: Setup, Connections, and Specifications</p> <p>A comprehensive user manual for the Hiwill D20 soundbar, detailing setup instructions, connection methods (ARC, Optical, AUX, Bluetooth), control panel and remote functions, placement guidance, technical specifications, and FCC compliance information.</p>
 <p>Model Number: HW210 Product Name: HW210 Brand: Hiwill</p>	<p>Hiwill HW210 Soundbar User Manual</p> <p>Detailed user manual for the Hiwill HW210 soundbar, covering setup, features, connectivity options (Bluetooth, HDMI ARC, Optical, AUX), and troubleshooting for home theater audio.</p>
 <p>Model Number: A21 Product Name: A21 Brand: Hiwill</p> <p>规格: 12. 18. 2012 规格书尺寸: 125x200mm (含包装) (单位: 厘米)</p>	<p>Hiwill A21 Soundbar User Manual - Setup and Operation Guide</p> <p>Get started with your Hiwill A21 soundbar. This user manual provides detailed instructions for setup, connecting via ARC, Optical, AUX, and Bluetooth, operating the device, and understanding its features. Enhance your home entertainment audio with the Hiwill AT-S024.</p>