



[Manuals.plus](#) /

› [TTBKA](#) /

› TTBKA Shipping Container Roof Kit User Manual

TTBKA W2089P206148

ASK A QUESTION ABOUT THIS MANUAL

Ask about setup, troubleshooting, compatibility, parts, safety, or missing instructions. Manuals+ will review the question and use this page's manual context to help answer it.

Question

Example: How do I reset this device or fix this error?

Details

Model number, symptoms, what you tried, or the section of the manual you are using.

[Submit question](#)

Shipping Container Roof Kit User Manual

Model: W2089P206148 | Brand: TTBKA

1. PRODUCT OVERVIEW

The TTBKA Shipping Container Roof Kit is a versatile and durable canopy shelter designed for a wide range of outdoor storage and event applications. This 40'Wx40'Lx15'H double truss system provides a spacious, pole-free interior, making it ideal for warehouses, farm tents, equipment storage, temporary offices, and large-scale events. Constructed with 22OZ PVC, the tarpaulin is PFAS-free and EU REACH compliant, ensuring durability and weather resistance.

This kit is engineered for easy assembly and offers a robust solution for commercial and large residential needs, providing protection from the elements while maximizing usable space.



Figure 1: TTBAK Shipping Container Roof Kit installed between two shipping containers.

2. SAFETY INFORMATION

Read all instructions carefully before assembly and use. Failure to follow these instructions may result in serious injury or property damage.

- **Intended Use:** This canopy shelter is designed for non-flammable, non-explosive, and non-chemical hazard environments such as warehouses, farm tents, equipment storage, parking lots, temporary offices, livestock sheds, workshops, parties, and large-scale events. Using it for other purposes may lead to structural instability and reduced waterproof performance, potentially causing the shelter to malfunction and pose safety hazards. Assess risks carefully.
- **Installation Environment:** When installing, place shipping containers on solid cement ground. Operate in a safe, low-wind-speed environment to reduce installation risks.
- **Professional Installation Recommended:** This large product requires experienced professionals. Installation with two or more people is recommended for greater efficiency and safety. Use forklift-like equipment for transportation and cooperate with lifting trucks, scaffolding, or cranes for installation to ensure correct and reliable installation while safeguarding installer safety.
- **Weather Conditions:** A sunny and windless environment lowers installation risks significantly. Monitor weather conditions closely. Strong winds, heavy snow, or extreme weather can damage the shelter. Before adverse weather approaches, take proper reinforcement measures. For instance, add rope fixing points at the four corners of the canopy, ensuring the rope material and diameter can withstand expected tension. Use a specific knotting method when tying the rope to a heavy object for enhanced firmness. Check the tightness of connecting parts like screws and rivets to ensure they are not loose. Strengthen the monitoring of the shelter's status. Remove the cover during a hurricane. Clear snow in time to prevent prolonged accumulation.
- **Load Capacity:** Never overload the shelter. Excessive load may cause it to collapse and pose a serious threat to people and property. During use, plan rationally according to the specifications of the shipping container and canopy shelter and the ground's bearing capacity. Measure item weights in advance to ensure the total weight does not exceed the ground's capacity.
- **Children and Pets:** During installation and disassembly, keep children and pets away from the work area. Improper operation could harm them. Set up obvious warning signs to remind people to be safety-conscious.
- **Regular Inspection:** Regularly check for damage or wear on the shelter. Formulate a detailed inspection schedule and conduct comprehensive and meticulous inspections at fixed intervals. Replace damaged parts immediately upon discovery to ensure safe use.
- **Work Area Cleanliness:** Keep the work area clean to avoid injuries caused by clutter.

- **Heat Sources:** Be careful with power and heat sources. Do not place heat sources near the tarpaulin or expose it to open flame.
- **Installation Type:** This unit is intended for installation on the inner edge of the container. Extra support tubes are needed if installing on the outer edge.

3. SETUP AND ASSEMBLY

The TTBKA Shipping Container Roof Kit is designed for straightforward assembly, though professional assistance and heavy equipment are recommended due to its size and weight. Ensure you have all components listed in the packing list before beginning assembly.

3.1 Pre-Assembly Checklist

- Verify all parts are present and undamaged.
- Ensure the installation site is level, solid, and free from obstructions.
- Confirm weather conditions are favorable (sunny, low wind).
- Gather necessary tools and equipment (forklift, lifting trucks, scaffolding, cranes, ladders, safety gear).
- Position shipping containers on solid cement ground with appropriate spacing for the canopy.

3.2 Assembly Steps (General Guidelines)

1. **Prepare the Containers:** Ensure the shipping containers are securely placed and level. This kit is designed for installation on the inner edge of the containers.
2. **Assemble Truss Sections:** Begin assembling the individual truss sections according to the detailed assembly manual provided with the product. These sections form the arched roof structure.



Figure 2: Lifting and positioning a truss section during assembly.

3. **Lift and Secure Trusses:** Using appropriate lifting equipment (e.g., forklift, crane), carefully lift and position each assembled truss section onto the designated mounting points on the shipping containers. Secure each truss section firmly using the provided hardware.



Figure 3: Multiple truss sections forming the canopy structure.

4. **Install Cross Bracing:** Install all necessary cross bracing and support beams to ensure the structural integrity of the frame. Refer to the diagram for correct placement.

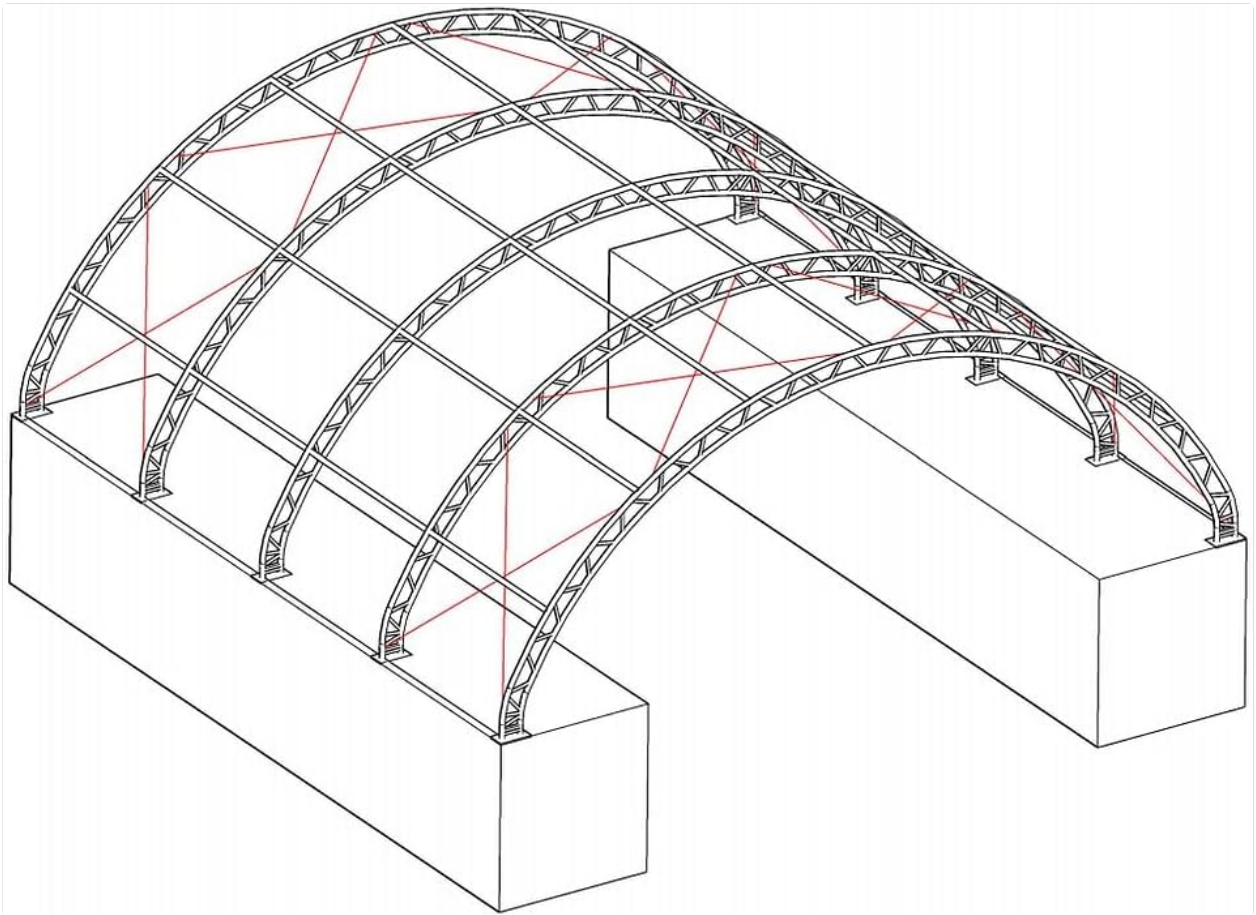


Figure 4: Structural framework diagram.

5. **Drape and Secure Tarpaulin:** Carefully unroll and drape the 22OZ PVC tarpaulin over the assembled frame. Ensure it is centered and evenly distributed. Secure the tarpaulin to the frame using the provided fastening mechanisms, ensuring a tight and weather-resistant fit.
6. **Final Checks:** Double-check all connections, bolts, and fasteners to ensure they are tight and secure. Verify the tarpaulin is properly tensioned and free of wrinkles that could collect water.

Note: The provided package dimensions are 131 x 43.3 x 31 inches, and the item weight is 2050 pounds, indicating the need for heavy lifting equipment during setup.

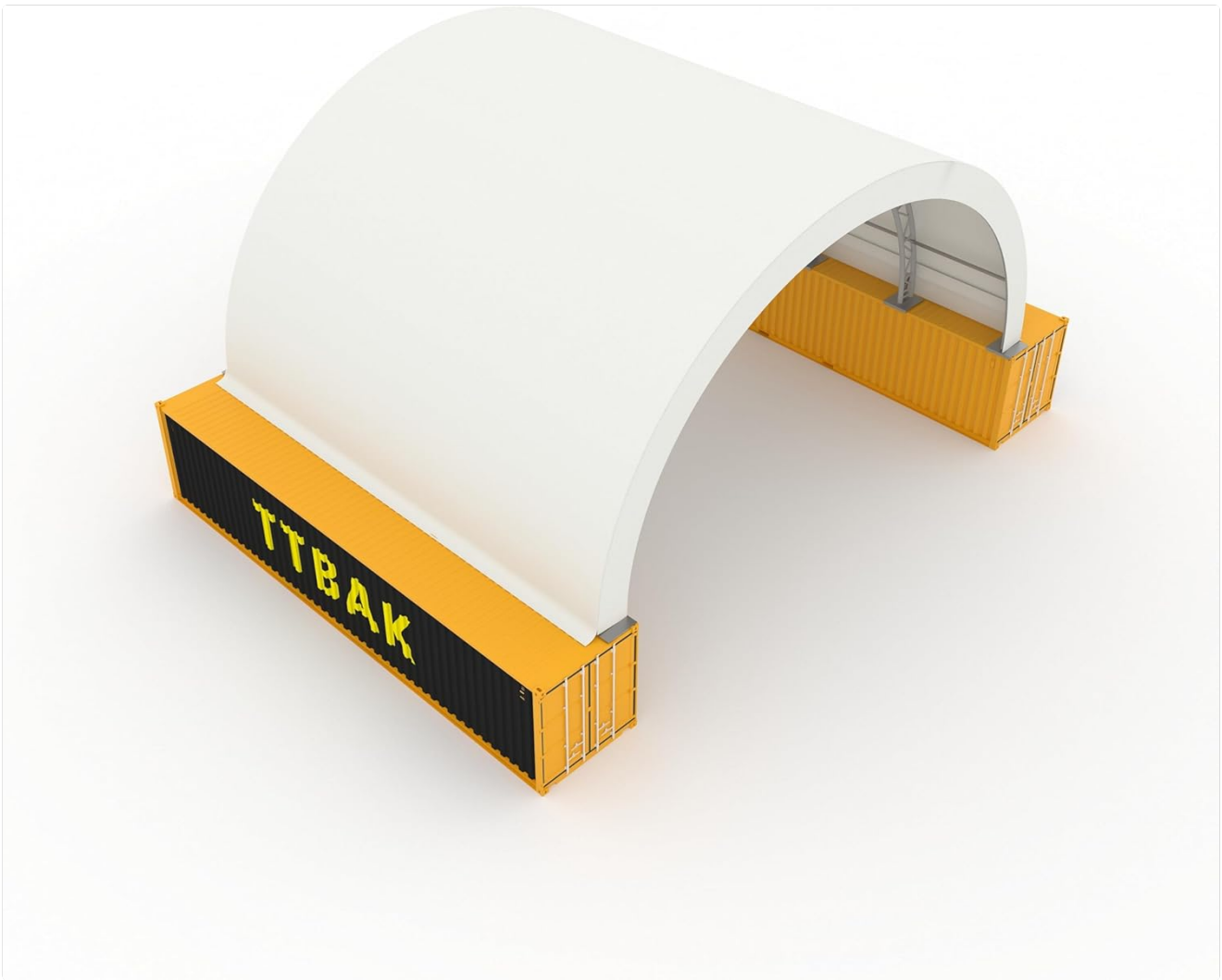


Figure 5: Product package dimensions.

4. OPERATING GUIDELINES

Once assembled, the TTBKA Shipping Container Roof Kit provides a protected space for various uses. Adhere to the following guidelines for optimal performance and safety.

- **Space Utilization:** The design offers 100% interior space due to the absence of internal poles. Utilize this space efficiently for storage, workshops, or event setups.
- **Ventilation:** While providing shelter, ensure adequate ventilation if storing items that require airflow or if people will be occupying the space for extended periods.
- **Load Management:** Do not hang heavy objects from the frame or tarpaulin. The structure is designed to withstand environmental loads (wind, snow) but not concentrated hanging loads.
- **Entry/Exit:** Plan clear entry and exit points, especially if the shelter is used for events or high-traffic storage.

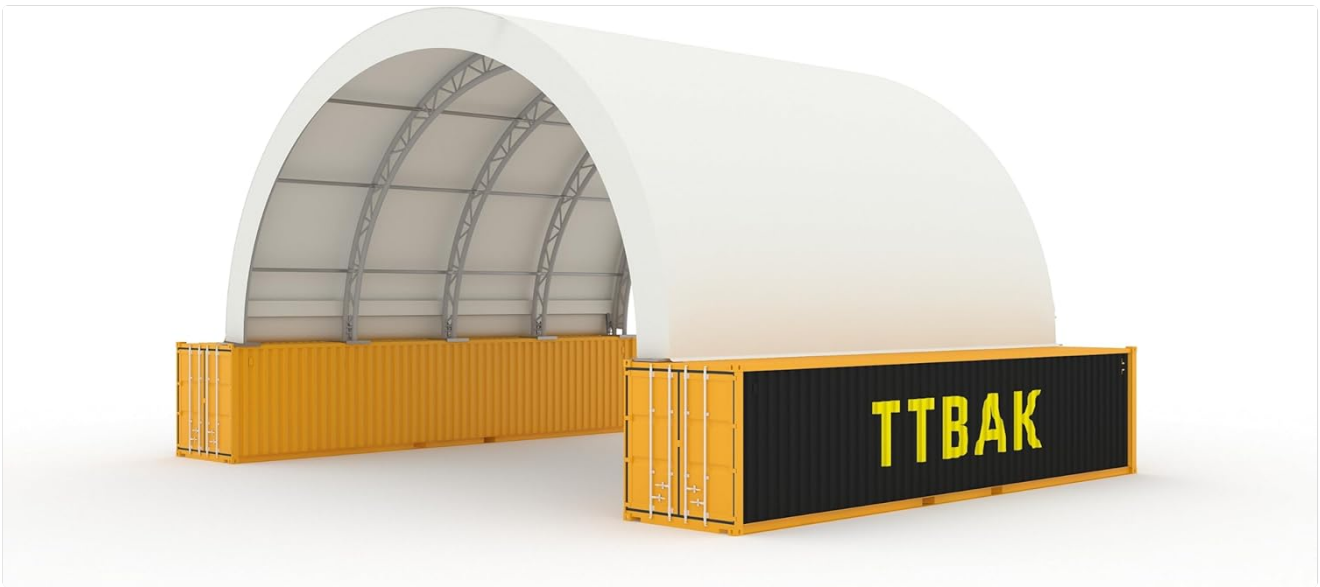


Figure 6: Spacious interior of the canopy shelter accommodating large equipment.

5. MAINTENANCE

Regular maintenance is crucial to extend the lifespan and ensure the safety of your TTBAK Shipping Container Roof Kit.

- **Routine Inspections:** Conduct visual inspections weekly or bi-weekly. Check for any signs of wear, tear, or damage to the tarpaulin, frame, and connections.
- **Fastener Checks:** Periodically check all bolts, nuts, and fasteners to ensure they remain tight. Vibrations from wind or heavy use can cause them to loosen over time.
- **Tarpaulin Cleaning:** Clean the PVC tarpaulin as needed with mild soap and water. Avoid harsh chemicals or abrasive cleaners that could damage the material. Rinse thoroughly.
- **Snow Removal:** In areas with snowfall, regularly remove accumulated snow from the roof to prevent excessive load, which can lead to structural failure. Use a soft brush or broom to avoid damaging the tarpaulin. Snow-state customers are strongly advised to opt for double-truss framing.
- **Water Drainage:** Ensure proper water runoff from the canopy. Address any areas where water might be pooling, as this can stress the fabric and frame.
- **Damage Repair:** Promptly repair any small tears or punctures in the tarpaulin using appropriate repair kits. Address any bent or damaged frame components immediately.
- **Extreme Weather Preparation:** Before anticipated strong winds, heavy snow, or hurricanes, take additional reinforcement measures as outlined in the Safety Information section. Consider removing the cover during hurricanes.

6. TROUBLESHOOTING

This section addresses common issues you might encounter with your Shipping Container Roof Kit.

Problem	Possible Cause	Solution
---------	----------------	----------

Problem	Possible Cause	Solution
Canopy appears unstable or sways in wind.	Loose fasteners; insufficient anchoring; extreme wind conditions.	Tighten all bolts and connections. Ensure containers are on solid ground. Add additional anchoring points or ropes if necessary, especially in windy areas. Consider disassembling in extreme weather.
Water pooling on the tarpaulin.	Improper tensioning of tarpaulin; structural sag; debris accumulation.	Re-tension the tarpaulin to ensure a taut surface. Check frame for any bending or damage. Clear any debris (leaves, snow) that might be causing pooling.
Tears or punctures in the tarpaulin.	Sharp objects; abrasion; material fatigue; animal damage.	Patch small tears immediately with a PVC repair kit. For large damages, contact customer support for replacement options. Prevent contact with sharp objects.
Difficulty assembling frame components.	Misalignment; incorrect part usage; insufficient force/equipment.	Refer to the detailed assembly manual. Ensure parts are correctly oriented. Use appropriate lifting and positioning equipment. Do not force components if they don't fit; re-check instructions.

7. SPECIFICATIONS

Feature	Detail
Brand	TTBKA
Model Number	W2089P206148
Dimensions (L x W x H)	40' x 40' x 15' (feet)
Material (Frame)	Alloy Steel
Material (Cover)	22OZ PVC (PFAS-free, EU REACH compliant)
Color	White
Item Weight	2050 Pounds
Water Resistance Level	Waterproof
UV Protection	UV resistant
Assembly Required	Yes
Interior Space	100% usable (no internal poles)



Product Dimensions

40FTx40FTx15FT

Figure 7: Product Dimensions (40'x40'x15').

8. WARRANTY AND SUPPORT

For warranty information, technical support, or to order replacement parts, please contact TTBKA customer service. Keep your purchase receipt and model number (W2089P206148) handy for faster service.

Customer Support: Refer to the contact information provided at the point of purchase or on the product packaging for direct assistance.

The term "lifespan" refers to the durability of the materials themselves, not to the installation of the canopy structure. The assembled canopy's structural integrity may be impacted by sudden weather changes (e.g., high winds, heavy snow, rain). Always check the forecast and consider the described limitations.