

roborock F25 RT

roborock F25 RT Vacuum Mop User Manual

Model: F25 RT

INTRODUCTION

Thank you for choosing the roborock F25 RT Vacuum Mop. This all-in-one wet and dry vacuum cleaner is designed to provide efficient and thorough cleaning for various hard floor surfaces, including tile, hardwood, wood, and vinyl. With its powerful suction, self-cleaning capabilities, and flexible design, the F25 RT simplifies your floor care routine. This manual provides essential information on the setup, operation, maintenance, and troubleshooting of your new appliance. Please read it carefully before use and retain it for future reference.

IMPORTANT SAFETY INSTRUCTIONS

Always follow basic safety precautions when using electrical appliances to reduce the risk of fire, electric shock, or injury.

- Read all instructions before using the appliance.
- Do not immerse the appliance in water or other liquids.
- Do not use outdoors or on wet surfaces.
- Close supervision is necessary when any appliance is used by or near children.
- Use only as described in this manual. Use only manufacturer's recommended attachments.
- Do not use with damaged cord or plug. If appliance is not working as it should, has been dropped, damaged, left outdoors, or dropped into water, return it to a service center.
- Do not pull or carry by cord, use cord as a handle, close a door on cord, or pull cord around sharp edges or corners. Do not run appliance over cord. Keep cord away from heated surfaces.
- Do not unplug by pulling on cord. To unplug, grasp the plug, not the cord.
- Do not handle plug or appliance with wet hands.
- Do not put any object into openings. Do not use with any opening blocked; keep free of dust, lint, hair, and anything that may reduce air flow.
- Keep hair, loose clothing, fingers, and all parts of body away from openings and moving parts.
- Turn off all controls before unplugging.

- Use extra care when cleaning on stairs.
- Do not use to pick up flammable or combustible liquids, such as gasoline, or use in areas where they may be present.
- Do not pick up anything that is burning or smoking, such as cigarettes, matches, or hot ashes.
- Do not use without dust bag and/or filters in place.

PACKAGE CONTENTS

Verify that all components are present and in good condition:

- roborock F25 RT Vacuum Mop Unit
- Charging Dock
- Power Adapter
- Cleaning Brush
- Extra Filter
- Floor Cleaning Solution
- User Manual



Image: The roborock F25 RT vacuum mop unit shown with its charging dock, power adapter, cleaning brush, an extra filter, and a bottle of floor cleaning solution.

SETUP

1. **Assemble the Handle:** Insert the handle into the main body of the vacuum mop until it clicks securely into place.

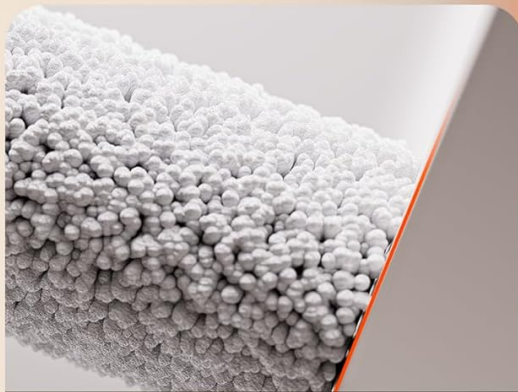
2. **Charge the Battery:** Place the vacuum mop on the charging dock. Connect the power adapter to the charging dock and plug it into a wall outlet. Ensure the device is properly seated and charging indicators illuminate. A full charge is recommended before first use.
3. **Fill the Clean Water Tank:** Locate the clean water tank. Open the cap and fill it with clean tap water. For optimal cleaning, you may add a small amount of roborock floor cleaning solution as per the solution's instructions. Do not overfill. Close the cap securely.
4. **Install the Dirty Water Tank:** Ensure the dirty water tank is empty and properly installed in its designated slot.

OPERATING INSTRUCTIONS

Basic Operation

1. **Power On:** Press the power button on the handle to turn on the vacuum mop.
2. **Select Mode:** The device typically starts in a standard cleaning mode. Refer to the display or indicator lights for current mode.
3. **Start Cleaning:** Tilt the handle back to engage the cleaning head. Push the vacuum mop forward and pull it back to clean the floor. The device will automatically dispense water and vacuum up dirty water.
4. **Edge-to-Edge Cleaning:** The F25 RT features triple-edge cleaning, allowing it to clean close to walls and furniture. Position the cleaning head along edges for thorough cleaning.

Dreifach-Kantenreinigung



<1 mm (0,03 Zoll)
Erstklassige Kantenreinigung



Image: A close-up view of the roborock F25 RT's cleaning head demonstrating its ability to clean within 1mm (0.03 inches) of edges, highlighting its triple-edge cleaning capability.

5. **Maneuvering:** The lightweight design and 70° swivel assist wheels allow for effortless maneuvering around obstacles and under furniture. The 180° lie-flat design enables cleaning in hard-to-reach areas.

Das **180°** Lie-Flat-Design für versteckte Bereiche



12,5 cm (4,92 Zoll); Basierend auf internen Tests des Herstellers.

Image: A person demonstrating the roborock F25 RT's 180° lie-flat design, showing how it can reach under low furniture with a clearance of 12.5 cm (4.92 inches).

Leicht & flexibel zu schieben



Image: A user easily pushing the roborock F25 RT across a kitchen floor, illustrating its lightweight (4 kg / 8.8 lbs) and flexible design with 70° swivel assist wheels and a low-positioned water tank for improved balance.

6. **Power Off:** Press the power button again to turn off the vacuum mop. Return it to the charging dock for self-cleaning and charging.

Self-Cleaning Function

The roborock F25 RT features an automatic self-cleaning and drying system:

1. **Initiate Self-Cleaning:** After cleaning, place the vacuum mop back on the charging dock. The self-cleaning cycle can be initiated automatically or manually via a dedicated button (if available).
2. **Hot Water Wash:** The system uses 90°C (194°F) hot water to thoroughly clean the roller brush and internal pathways, preventing odors and ensuring hygiene.
3. **Hot Air Drying:** Following the wash, hot air drying at 90°C (194°F) ensures the roller brush and internal components are completely dry, preventing mildew and bacterial growth.

Autonomie jusqu'à **35 min**



Les données ci-dessus font référence au mode Éco.

Image: A diagram illustrating the roborock F25 RT's self-cleaning process, showing the 90°C (194°F) hot water wash for the roller brush and the subsequent 90°C (194°F) hot air drying for complete dryness.

Überlassen Sie die schmutzige Arbeit sich selbst



90°C (194°F)

Die Heißwasser-Selbstreinigung
sorgt für komplette Sauberkeit

Das 90°C (194°F)

Heißlufttrocknen
sorgt für absolute
Trockenheit

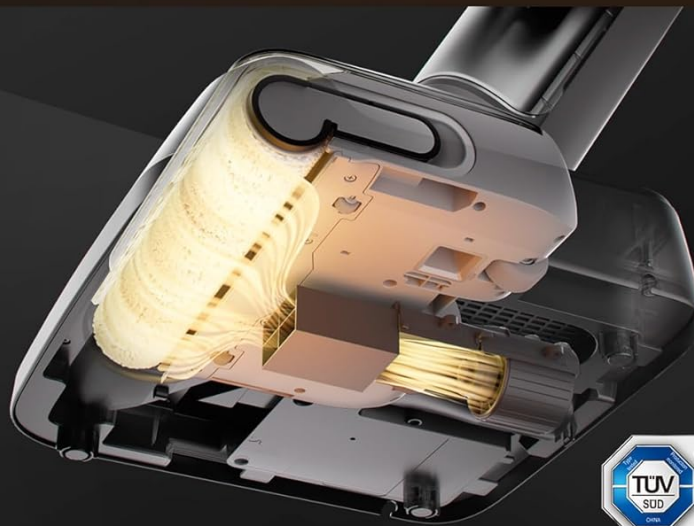


Image: A close-up of the roborock F25 RT's roller brush and dual scraper system, demonstrating its ability to prevent hair tangles and leave no streaks during operation.

MAINTENANCE

Regular maintenance ensures optimal performance and extends the lifespan of your roborock F25 RT.

After Each Use:

- **Empty and Clean Dirty Water Tank:** Remove the dirty water tank, empty its contents, and rinse it thoroughly with clean water. Allow it to air dry before re-installing.
- **Clean Roller Brush:** The self-cleaning function handles most of this. However, periodically remove the roller brush and check for any remaining debris or hair. Use the provided cleaning brush if necessary.
- **Clean Filter:** Remove the filter from the dirty water tank. Rinse it under running water until clean. Allow it to air dry completely (at least 24 hours) before re-installing. Do not use the appliance with a wet filter.

Monthly Maintenance:

- **Inspect Charging Contacts:** Wipe the charging contacts on both the device and the dock with a dry cloth to ensure good connection.
- **Check for Blockages:** Inspect the air ducts and suction path for any blockages.

TROUBLESHOOTING

If you encounter issues with your roborock F25 RT, refer to the following table for common problems and solutions.

Problem	Possible Cause	Solution
Device does not power on.	Battery is low or depleted. Not properly charged.	Place the device on the charging dock and ensure it is fully charged. Check power connection to the dock.
Poor suction or cleaning performance.	Dirty water tank is full. Clean water tank is empty. Roller brush is tangled or dirty. Filter is clogged.	Empty and clean the dirty water tank. Refill the clean water tank. Clean the roller brush. Clean or replace the filter.
Water leakage.	Water tanks not properly installed. Tank caps not sealed.	Ensure both clean and dirty water tanks are securely in place and their caps are tightly sealed.
Device makes unusual noise.	Roller brush obstructed. Debris in suction path.	Check and clear any obstructions from the roller brush and suction path.
Self-cleaning not working.	Dirty water tank full. Device not properly seated on dock.	Empty the dirty water tank. Ensure the device is correctly positioned on the charging dock.

If the problem persists after trying these solutions, please contact roborock customer support.

SPECIFICATIONS

Feature	Detail
Model Name	F25 RT
Item Model Number	F25 GT
Brand	roborock
Special Feature	Cordless, Wet & Dry Cleaning, Self-Cleaning, Hot Air Drying, Edge-to-Edge Cleaning
Suction Power	20000Pa
Battery Life	Up to 35 minutes (Eco mode)
Clean Water Tank Capacity	870 Milliliters

Feature	Detail
Product Dimensions	10.3"L x 8.7"W x 43.3"H
Item Weight	8.8 pounds
Color	Gray
Filter Type	Washable



Image: An illustration showing the roborock F25 RT's battery autonomy of up to 35 minutes and a clean water tank capacity of 870 ml, based on Eco mode data.

WARRANTY AND SUPPORT

roborock products come with a limited warranty. For detailed warranty information, please refer to the warranty card

included with your product or visit the official roborock website.

For technical support, troubleshooting assistance, or to purchase replacement parts, please contact roborock customer service:

- **Website:** us.roborock.com
- **Email:** Refer to your product documentation for specific support email.
- **Phone:** Refer to your product documentation for specific support phone number.

Please have your model number (F25 RT) and purchase information ready when contacting support.