

Manuals.plus /

› LSSOCH /

› Air Filter 7068070M1 Instruction Manual

LSSOCH 7068070M1

Air Filter 7068070M1 Instruction Manual

Model: 7068070M1 | Brand: LSSOCH

PRODUCT OVERVIEW

This document provides essential information for the installation, maintenance, and troubleshooting of the LSSOCH Air Filter, Part Number 7068070M1. This air filter is designed for compatibility with various Massey Ferguson Tractor Models, including 2705E, 2706E, 2750E, 2760E, 2850E, 2850M, 2855M, 2860E, and 2860M. Proper installation and regular maintenance are crucial for optimal engine performance and longevity.





Figure 1: Front view of the LSSOCH Air Filter 7068070M1. This image shows the cylindrical shape and the protective mesh casing of the filter.

PACKAGE CONTENTS

Upon opening the package, verify that all components are present and undamaged. The standard package includes:

- 1X Air Filter, Part Number 7068070M1

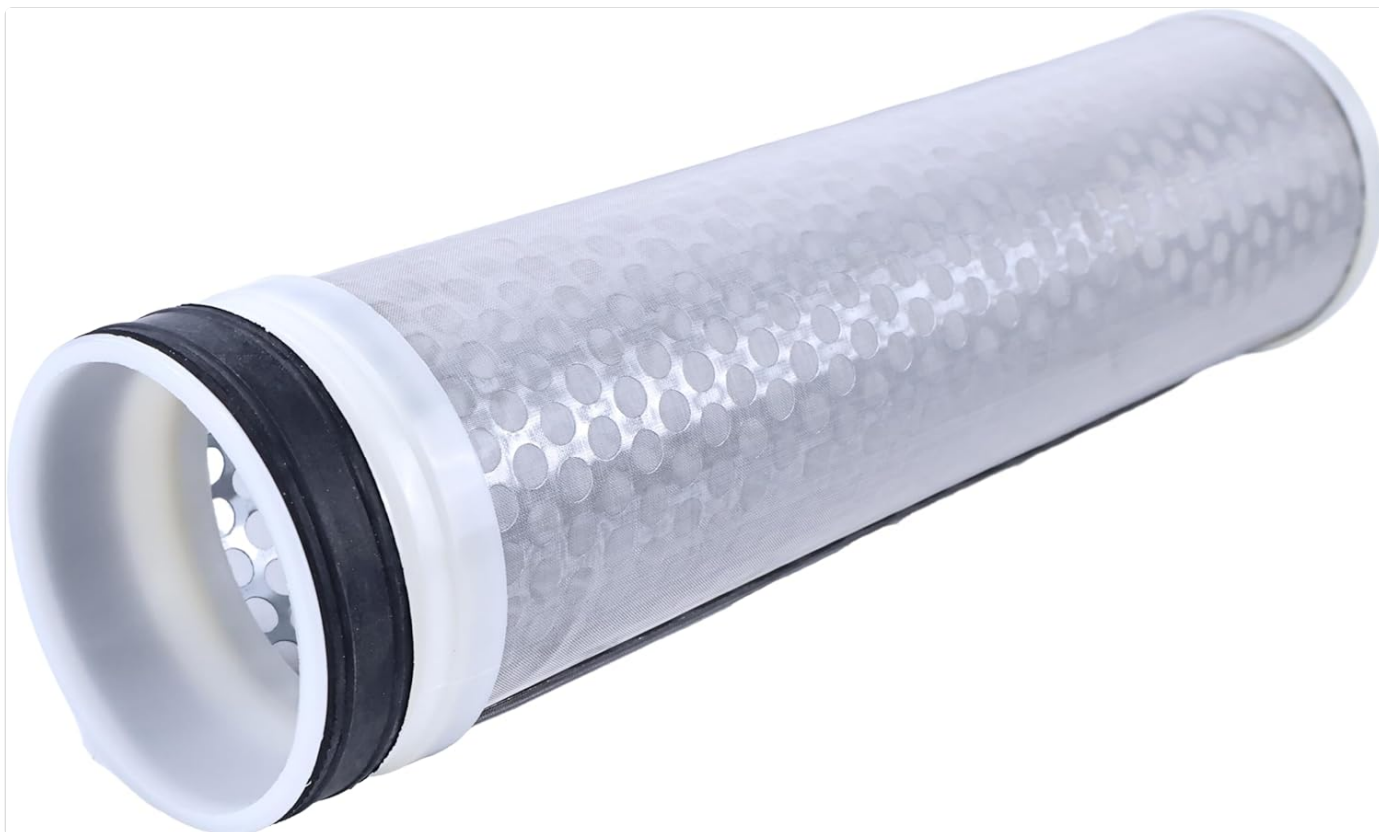


Figure 2: Angled view of the LSSOCH Air Filter 7068070M1. This perspective highlights the filter's length and the rubber seal at one end.

INSTALLATION INSTRUCTIONS

Follow these general steps for replacing the air filter in compatible Massey Ferguson Tractor Models. Refer to your tractor's specific service manual for detailed instructions and safety precautions.

1. **Safety First:** Ensure the tractor engine is turned off and cooled down. Disconnect the battery if required by your tractor's manual to prevent accidental starting.
2. **Locate the Air Filter Housing:** The air filter housing is typically located under the hood, often near the engine intake. It is usually a large, cylindrical or rectangular plastic or metal casing.
3. **Open the Housing:** Unlatch or unscrew the clips/bolts securing the air filter housing cover. Carefully remove the cover.
4. **Remove Old Filter:** Gently pull out the old air filter element. Note its orientation for correct installation of the new filter.
5. **Clean Housing:** Inspect the inside of the air filter housing for dust, debris, or foreign objects. Clean the housing thoroughly with a damp cloth, ensuring no debris falls into the air intake. Do not use compressed air inside the housing as it can push debris further into the system.
6. **Install New Filter:** Insert the new LSSOCH Air Filter 7068070M1 into the housing, ensuring it seats properly and is oriented correctly. The rubber seal should fit snugly.
7. **Secure Housing:** Replace the air filter housing cover and secure it with the clips or bolts. Ensure a tight seal to prevent unfiltered air from entering the engine.
8. **Final Check:** Double-check all connections and ensure no tools or debris are left in the engine bay.



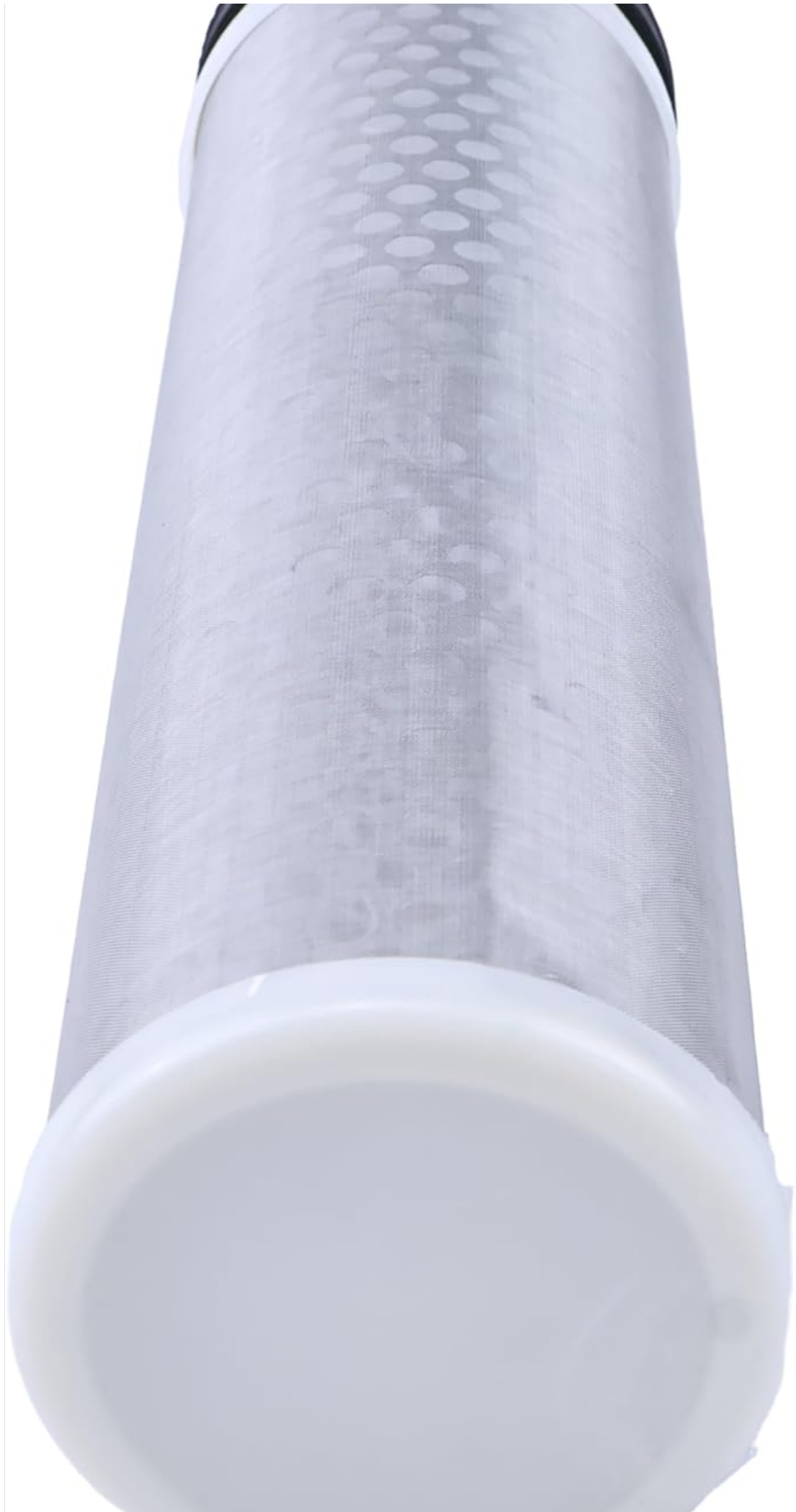




Figure 3: View of one end of the LSSOCH Air Filter 7068070M1. This image shows the opening where air enters or exits, and the robust construction of the filter's end cap.

OPERATION AND FUNCTION

Once installed, the LSSOCH Air Filter 7068070M1 functions as a critical component of your tractor's engine air intake system. Its primary role is to prevent harmful contaminants such as dust, dirt, pollen, and debris from entering the engine's combustion chambers. By providing clean air, the filter helps maintain optimal engine performance, fuel efficiency, and extends the lifespan of engine components by preventing abrasive wear.

The filter operates passively, continuously cleaning the air as it is drawn into the engine. There are no user-adjustable settings or operational controls for the air filter itself.

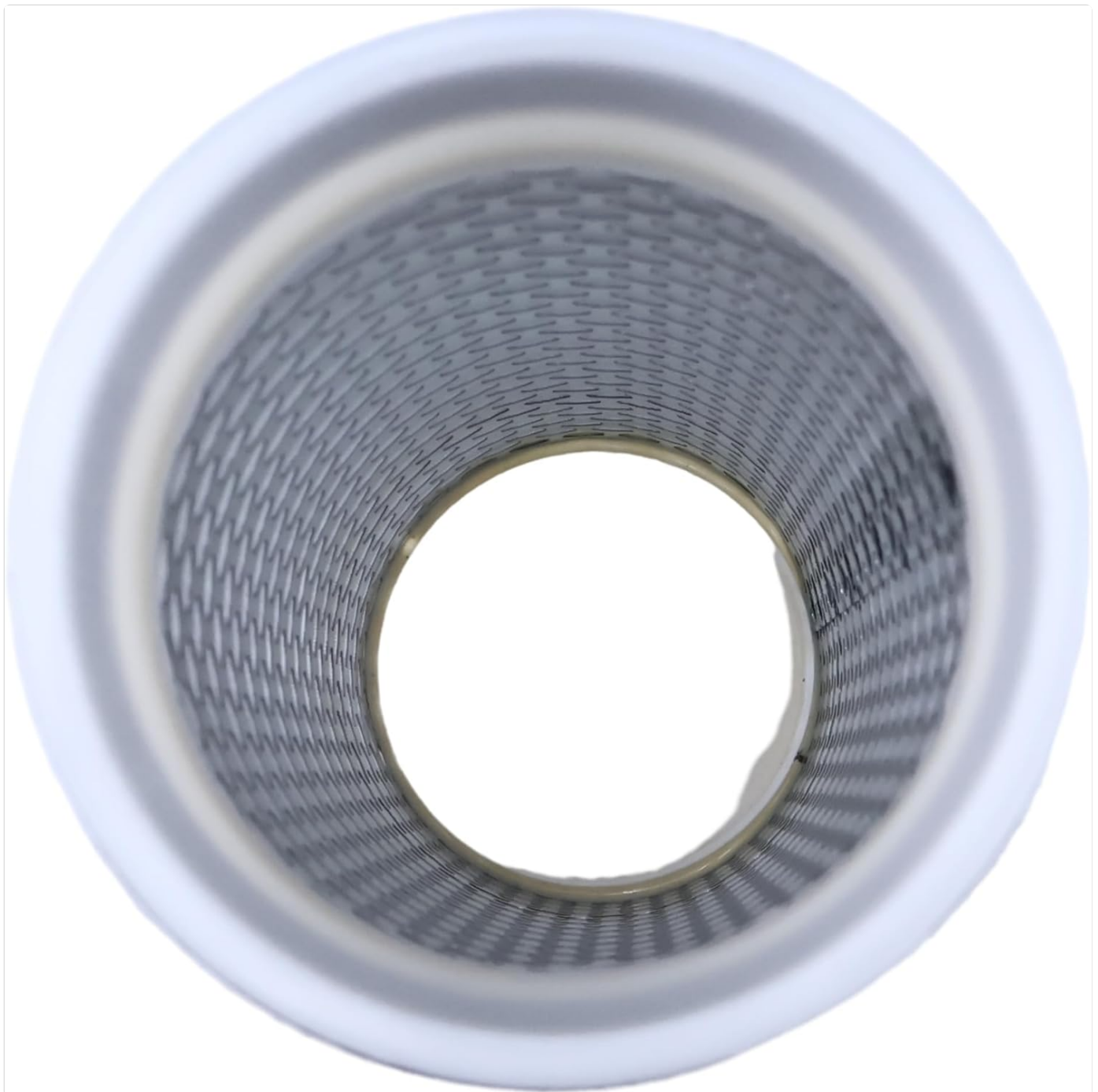


Figure 4: Internal view of the LSSOCH Air Filter 7068070M1. This close-up shows the intricate mesh and pleated filter media designed to

MAINTENANCE

Regular inspection and replacement of the air filter are essential for maintaining your tractor's performance and protecting its engine. The frequency of maintenance depends on operating conditions and hours of use.

- **Inspection:** Periodically inspect the air filter for signs of dirt, debris, or damage. In dusty environments, more frequent checks are recommended. A visual inspection can often reveal if the filter media is clogged or discolored.
- **Replacement Schedule:** Consult your Massey Ferguson tractor's owner's manual for the recommended air filter replacement intervals. As a general guideline, air filters should be replaced every 150-250 hours of operation or at least once a year, whichever comes first. Severe operating conditions (e.g., very dusty fields) may necessitate more frequent replacement.
- **Cleaning:** Do not attempt to clean this air filter by washing it or using compressed air. Cleaning can damage the filter media, reducing its effectiveness and potentially allowing contaminants to enter the engine. Always replace a dirty filter with a new one.

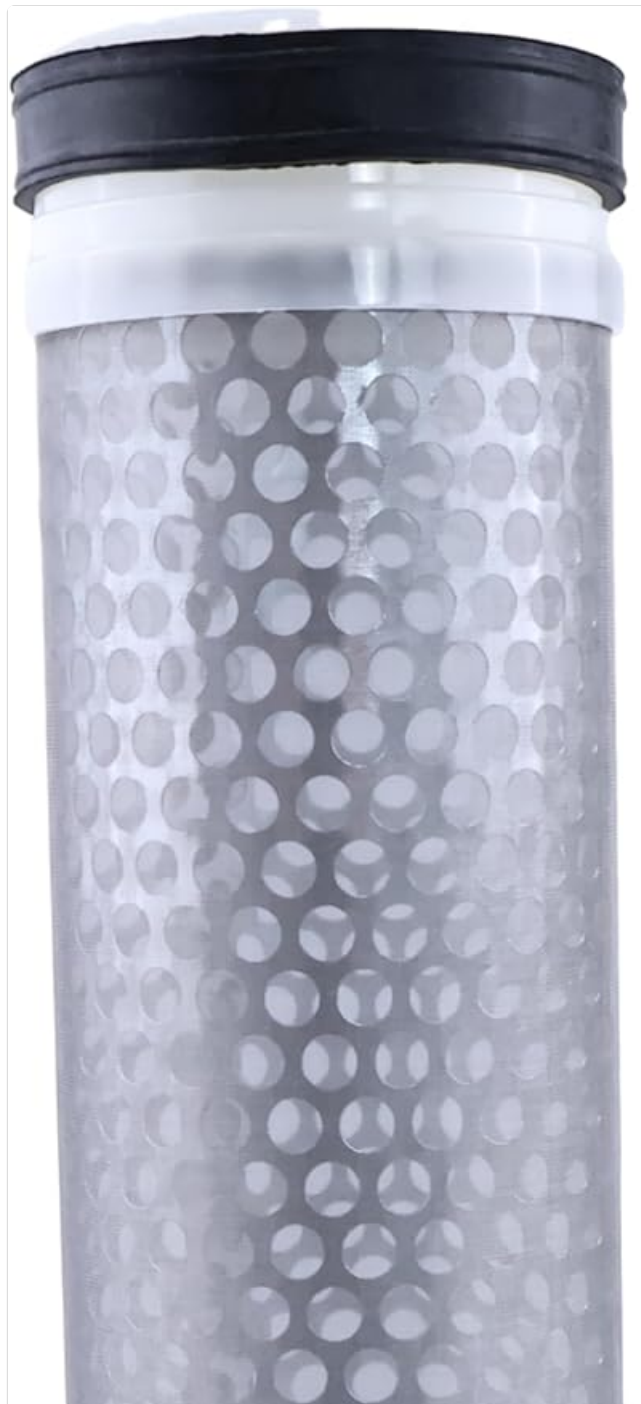




Figure 5: Side view of the LSSOCH Air Filter 7068070M1. This image provides a clear view of the filter's cylindrical body and the fine mesh exterior.

TROUBLESHOOTING

Issues related to the air filter typically stem from a clogged or improperly installed filter. Below are common symptoms and their potential solutions:

| Symptom | Possible Cause | Solution |
|----------------------------------|---|--|
| Reduced Engine Power/Performance | Clogged air filter restricting airflow. | Inspect and replace the air filter. |
| Increased Fuel Consumption | Engine working harder due to restricted airflow. | Inspect and replace the air filter. |
| Black Smoke from Exhaust | Insufficient air for proper combustion (rich fuel mixture). | Inspect and replace the air filter. |
| Engine Misfires or Runs Rough | Severe airflow restriction or unfiltered air entering the engine. | Inspect filter for proper seating and replace if clogged. Check housing for leaks. |

If symptoms persist after replacing the air filter, consult a qualified mechanic or your tractor's service manual for further diagnosis.



Figure 6: Detailed view of one end of the LSSOCH Air Filter 7068070M1. This image highlights the precise fit and finish of the filter's components, ensuring a secure seal within the air filter housing.

SPECIFICATIONS

| Attribute | Detail |
|--------------------|--|
| Product Name | Air Filter |
| Part Number | 7068070M1 |
| Brand | LSSOCH |
| Compatible Models | Massey Ferguson Tractor Models 2705E, 2706E, 2750E, 2760E, 2850E, 2850M, 2855M, 2860E, 2860M |
| Item Weight | 5.4 ounces |
| Package Dimensions | 11.1 x 3.2 x 3.2 inches |
| Fit Type | Vehicle Specific Fit |

WARRANTY AND SUPPORT

Specific warranty details for the LSSOCH Air Filter 7068070M1 are typically provided at the point of purchase or within the product packaging. Please retain your proof of purchase for any warranty claims.

For technical support, installation queries not covered in this manual, or warranty assistance, please contact the manufacturer or your authorized dealer. Contact information can usually be found on the product packaging or the brand's official website.

Note: Always refer to your tractor's official service manual for model-specific instructions and safety guidelines.