

Comfytemp 50"x7"

Comfytemp 5000mAh Portable Red Light Therapy Belt (Model: 50"x7") Instruction Manual

1. PRODUCT OVERVIEW

The Comfytemp 5000mAh Portable Red Light Therapy Belt is a versatile, wearable device designed for targeted red and near-infrared light therapy. It features a cordless design with a powerful rechargeable battery, offering convenience and flexibility for use on various body areas.

Key Features:

- **5000mAh Cordless Design:** Enjoy 80-250 minutes of use on a full charge, delivering strong 13W light intensity comparable to wired belts. Ideal for use anywhere, anytime.
- **Red & Infrared Light Therapy:** Combines visible 660nm red light for surface treatment and invisible 850nm near-infrared light for deeper muscle and joint targeting. Light irradiance up to 113.5 mW/cm² at 0 inch.
- **Adjustable Fit:** Includes an extension strap (20"x4") to fit waist sizes up to 70". Velcro straps ensure a snug but comfortable fit for waist, abdomen, back, hips, and legs.
- **Customizable Settings:** Offers 4 light modes and 9 adjustable intensity settings. Control via integrated buttons or a dedicated app with a 5-30 minute auto-off timer.



Image: The Comfytemp Red Light Therapy Belt offers freedom of movement with its cordless design, shown being worn by individuals during outdoor activities.

Your browser does not support the video tag.

Video: A quick introductory video demonstrating the Comfytemp Red Light Therapy Belt's features and ease of use.

2. SETUP AND FIRST USE

Unboxing and Components:

Upon opening the package, ensure all components are present:

- Comfytemp Red Light Therapy Belt
- Extension Strap (20"x4")
- Power Adapter
- User Manual

Tangles Gone, Freedom On

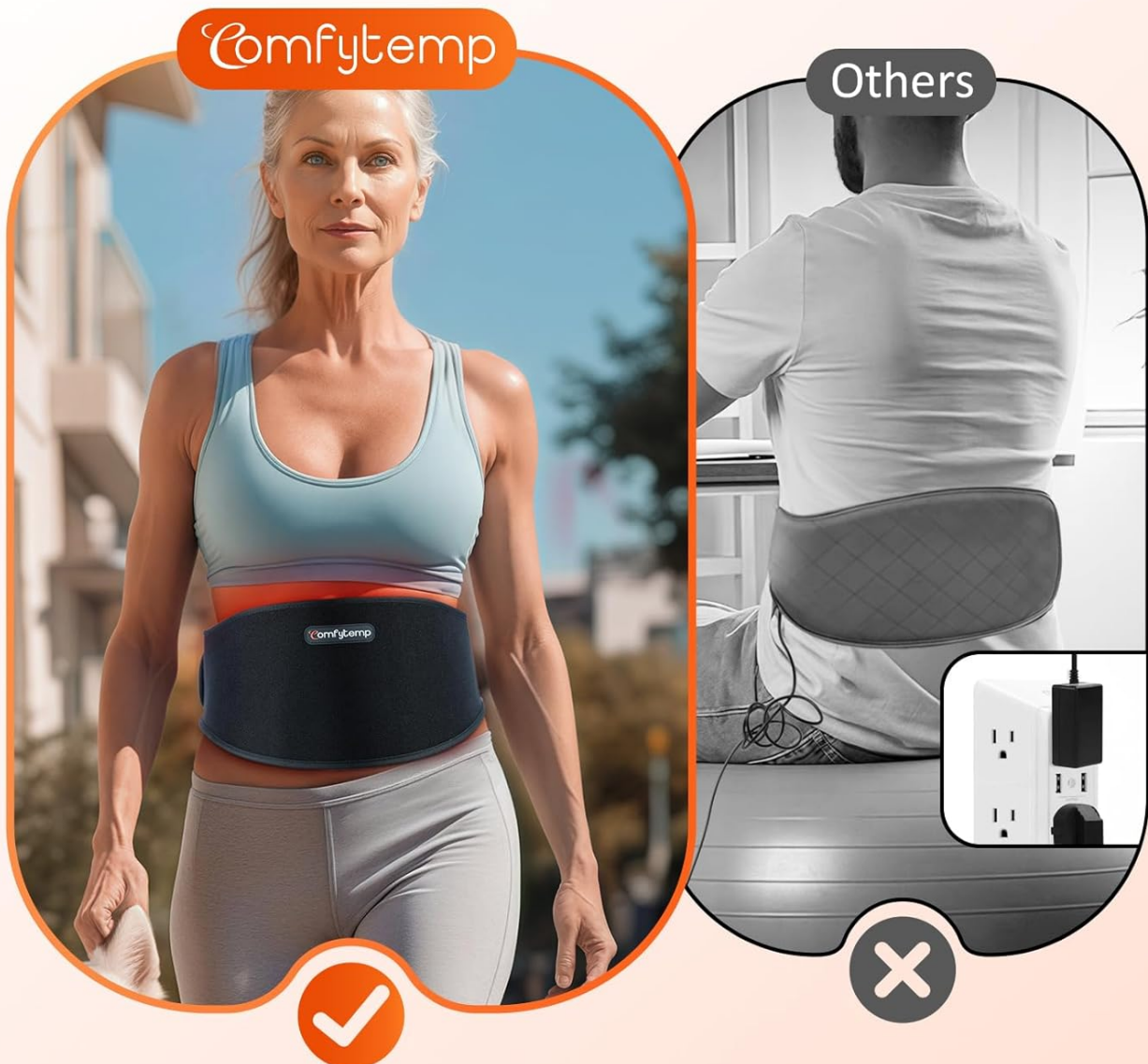


Image: The product box opened, revealing the therapy belt, user manual, and power adapter, neatly packaged.

Charging the Device:

1. Connect the power adapter to the charging port on the control panel of the belt.
2. Plug the adapter into a power outlet.
3. Allow the device to fully charge before first use. A full charge provides 80-250 minutes of operation depending on the intensity setting.

5000mAh Rechargeable Battery

Note: 80 mins using time even at the high level



Image: The control panel with a digital display indicating battery level and settings, essential for monitoring device status.

Wearing the Belt:

1. Place the red light therapy belt directly on the desired body area (waist, abdomen, lower back, hips, or legs).
2. Secure the belt using the Velcro straps. Ensure a snug but comfortable fit.
3. If needed, attach the extension strap to accommodate larger waist sizes up to 70 inches.

Longer Waist Size **Up to 70"**



Image: A visual guide to the belt's dimensions and how the extension strap increases its circumference for a wider range of users.

Your browser does not support the video tag.

Video: A user guide video demonstrating the proper way to wear and operate the Cordless Red Light Belt.

3. OPERATING INSTRUCTIONS

Powering On/Off:

Press and hold the power button on the control panel to turn the device on or off.

Selecting Light Modes:

The belt offers 4 light modes:

- **Red + NIR (660nm + 850nm):** Combines both red and near-infrared light for comprehensive therapy.
- **NIR (850nm):** Near-infrared light only, targeting deeper tissues. (Invisible to the naked eye)
- **Red (660nm):** Red light only, focusing on surface-level benefits.
- **Pulse (660nm + 850nm):** Both red and near-infrared light delivered in pulses.

Use the 'M' (Mode) button on the control panel or the app to cycle through these modes.

Adjusting Intensity:

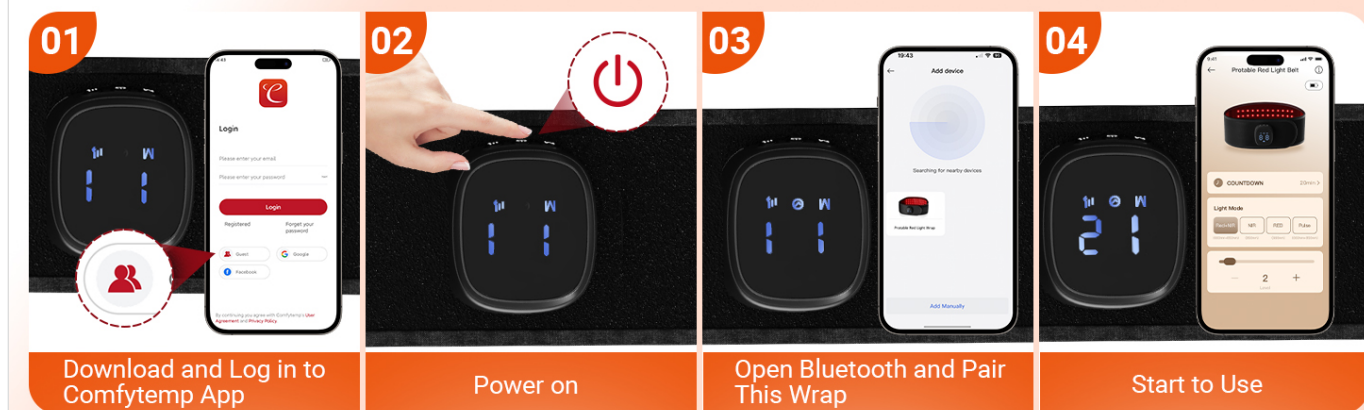
There are 9 adjustable intensity settings. For beginners, start with lower settings and gradually increase as comfortable. Adjust intensity using the '+' and '-' buttons on the control panel or via the app.

Using the App Control:

1. Download and log in to the Comfytemp App on your smartphone.
2. Power on the therapy belt.
3. Open Bluetooth on your phone and pair with the therapy belt through the app.
4. Customize your therapy session: select light mode, adjust intensity, and set the auto-off timer (5-30 minutes).

Warm Tip: The app is an extra add-on designed to enhance your experience.

How to Use with App



Warm Tip: APP is an extra add-on, designed to bring you more convenient experience.

Image: Step-by-step instructions for connecting and controlling the therapy belt using the Comfytemp mobile app.

4. MAINTENANCE AND CARE

To ensure the longevity and optimal performance of your Comfytemp Red Light Therapy Belt, follow these maintenance guidelines:

- **Cleaning:** Gently wipe the surface of the belt with a soft, damp cloth. Do not immerse the device in water or use harsh cleaning agents.
- **Storage:** Store the belt in a cool, dry place away from direct sunlight and extreme temperatures.
- **Battery Care:** Recharge the battery regularly, even if not in frequent use, to maintain battery health. Avoid fully depleting the battery for extended periods.
- **Handling:** Avoid bending or creasing the light panel excessively to prevent damage to the LEDs.

5. TROUBLESHOOTING

If you encounter any issues with your therapy belt, refer to the following common troubleshooting tips:

- **Device not turning on:**
 - Ensure the battery is fully charged.
 - Verify that the power button is pressed and held for a few seconds.
- **Lights not visible in NIR mode:**
 - The 850nm Near-Infrared (NIR) light is invisible to the naked eye. This is normal operation.
 - If Red+NIR mode is selected and only red lights are visible, ensure the device is functioning correctly by checking the control panel or app.
- **App not connecting:**
 - Ensure Bluetooth is enabled on your smartphone.
 - Make sure the therapy belt is powered on and within range of your phone.
 - Restart the app and/or the therapy belt.
- **Reduced battery life:**
 - Battery life varies with intensity settings; higher settings consume more power.

- Ensure the device is fully charged before each session.
- Over time, rechargeable batteries may experience reduced capacity.

For further assistance, please contact Comfytemp customer support.

6. SPECIFICATIONS

Feature	Detail
Model	50"x7"
Battery Capacity	5000mAh Lithium Polymer
Power Output	13W (max)
Light Wavelengths	660nm (Red Light), 850nm (Near-Infrared Light)
Light Irradiance	Up to 113.5 mW/cm² (at 0 inch)
Waist Size Compatibility	Up to 70" (with extension strap)
Control Options	Integrated buttons, Mobile App
Auto-off Timer	5-30 minutes (adjustable via app)
Package Dimensions	7.44 x 6.02 x 4.02 inches
Weight	1.17 Pounds
Manufacturer	Shenzhen Yicai Health Technology Co. , Ltd

7. WARRANTY AND SUPPORT

For warranty information, product support, or any inquiries, please refer to the contact details provided in the original product packaging or visit the official Comfytemp website.

Legal Disclaimer: Statements regarding dietary supplements have not been evaluated by the FDA and are not intended to diagnose, treat, cure, or prevent any disease or health condition.