

wavytalk 55US-186PK-DI-XAhQy4ZP

Wavytalk Thermal Brush User Manual

Model: 55US-186PK-DI-XAhQy4ZP

INTRODUCTION

This manual provides essential information for the safe and effective use of your Wavytalk Thermal Brush. Designed to deliver salon-quality blowouts, this 1.5-inch thermal brush incorporates negative ion technology for frizz reduction, resulting in shinier and smoother hair. Please read all instructions carefully before use.

IMPORTANT SAFETY INSTRUCTIONS

- Keep out of reach of children.
- Do not use near water (e.g., while bathing, in bathrooms).
- Keep the power plug and cord away from heated surfaces.
- Always unplug the appliance immediately after use.
- Do not place or store the appliance where it can fall or be pulled into a tub or sink.
- Do not use near places where the item may be dropped into water or other liquids.
- Do not use an appliance with a twisted, bent, or otherwise damaged cord.
- If the appliance falls into water, unplug it immediately. Do not reach into the water.
- Do not place in or drop into water or other liquids.
- This appliance is intended for household use only.
- Always store this appliance and cord in a moisture-free area. Do not store it in temperatures exceeding 140°F (60°C).
- Do not plug or unplug this appliance when your hands are wet.
- This appliance has a polarized plug (one blade is wider than the other). As a safety feature, this plug will fit in a polarized outlet only one way. If the plug does not fit fully in the outlet, reverse the plug. If it still does not fit, contact a qualified electrician. Do not attempt to defeat this safety feature.

Burn Hazard: Keep appliance out of reach from young children, particularly during use and cool down. When the appliance is connected to the power supply, never leave it unattended.

Always place the appliance with the stand, if any, on a heat-resistant, stable flat surface.

PRODUCT OVERVIEW

The Wavytalk Thermal Brush is designed for versatile hair styling, combining the functions of a brush and a thermal styling tool. It features a ceramic barrel for even heat distribution and negative ion technology to reduce frizz and

enhance shine.

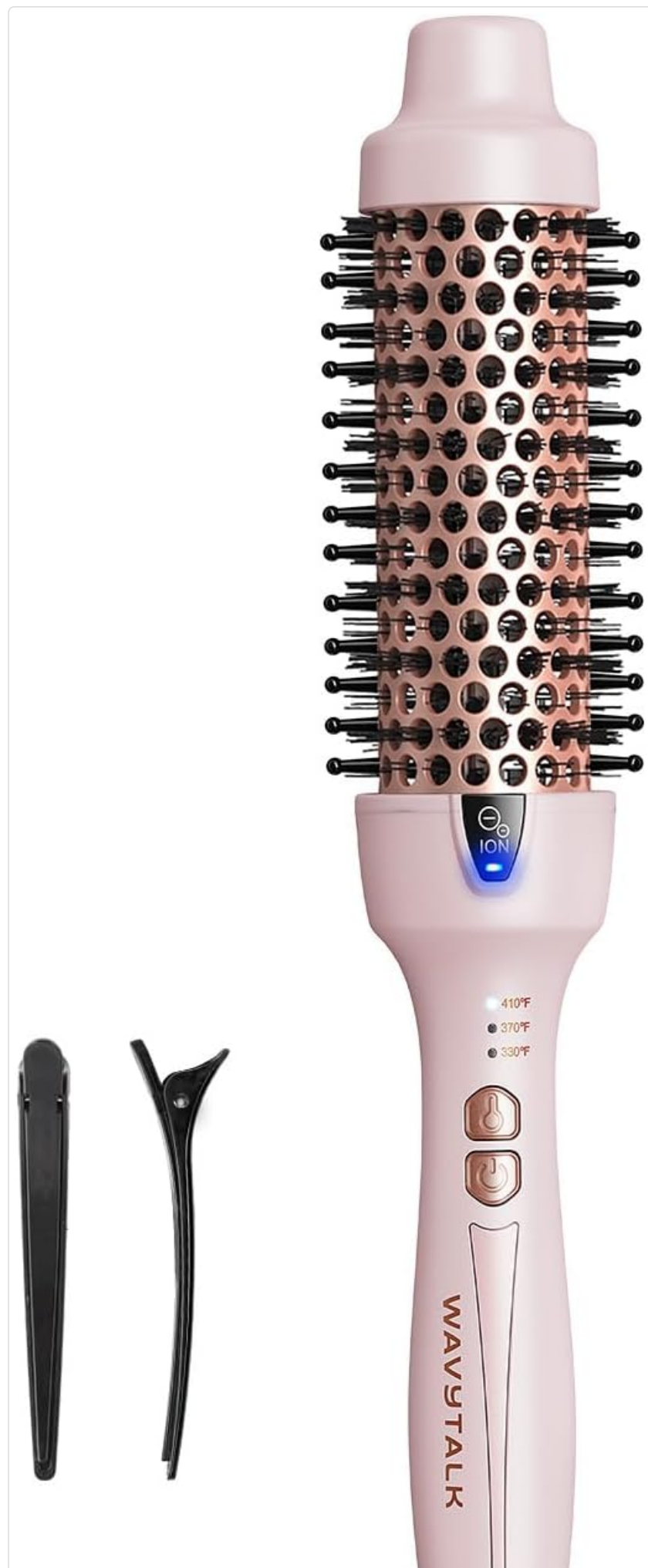




Image: The Wavytalk Thermal Brush, 1.5 Inch, in Millennial Pink, shown with two black hair clips.

Key Components:

- **Cool Tip:** For safe handling during styling.
- **Tangle-Free Bristles:** Designed to glide through hair without snagging.
- **Negative Ion Indicator Light:** Illuminates when negative ions are active.
- **Temperature Indicator Light:** Displays the current heat setting.
- **Temperature Setting Switch:** To adjust heat levels.
- **ON / OFF Switch:** For powering the device.
- **Swivel Cord:** Prevents tangling during use.
- **Hair Clips:** Included for sectioning hair.
- **Hair Brush Cleaner:** For maintaining the brush.

Features:

- **Negative Ion Technology:** Releases negative ions to reduce frizz, lock in moisture, and enhance hair shine and smoothness.
- **3 Temperature Settings:** Customizable heat for various hair types:
 - 330°F (170°C) for fine & thin hair
 - 370°F (190°C) for medium-textured hair
 - 410°F (210°C) for coarse & thick hair
- **Dual Voltage (120V-240V):** Suitable for international travel.
- **Ceramic Barrel:** Ensures even heat distribution for consistent styling.



Image: The handle of the Wavytalk Thermal Brush displaying the three temperature settings and power buttons.

Product Manual Overview:

Your browser does not support the video tag.

Video: "Wavytalk Thermal Brush - A look at the manual" - A seller-provided video reviewing the product and its manual, offering insights into its features and included accessories.

SETUP

1. Ensure your hair is clean and completely dry before using any styling tool.
2. Plug the appliance into a standard outlet.
3. To turn it on, press the ON / OFF switch for 1 second until the white indicator lights up.
4. Select your desired temperature using the Temperature Setting Switch. Allow the brush to heat up.

3 TEMPERATURE SETTINGS

for All Hair Types

330°F Fine & thin hair

370°F Medium-textured hair

410°F Coarse & thick hair



Image: A hand demonstrating how to turn on the Wavytalk Thermal Brush by holding the power button for 3 seconds.

OPERATING INSTRUCTIONS

The Wavytalk Thermal Brush is a hot styling brush and does not blow air. It is designed to smooth, curl, and add volume to your hair.

General Styling Tips:

1. **Sectioning Hair:** Divide your dry hair into manageable sections using the provided hair clips.
2. **Straightening:** Brush both over and under a 2-inch section of hair, moving slowly from roots to ends. Repeat for 5 to 8 seconds per section until hair is straightened.
3. **Curling/Adding Volume:** For curls or added volume, comb down your hair with the brush, then roll it up your hair, holding it for 5 to 15 seconds depending on your hair type and desired curl.
4. **Flipping Ends:** For flipped ends, roll the hair around the barrel and roll under for a curl or over for a flip. Slowly unroll.
5. Always hold the cool tip when handling the brush to avoid burns.

ONE TOOL, THREE STYLINGS

Straight Hair



Loose Curls



Blowout Look

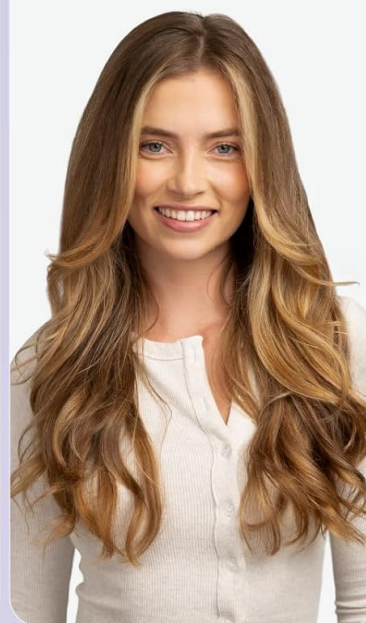


Image: Demonstrates the versatility of the thermal brush for creating straight hair, loose curls, and a voluminous blowout.

Video Demonstrations:

Your browser does not support the video tag.

Video: "Welcome to Blowout Magic" - An official product video from Freshine Hair (Wavytalk's seller) demonstrating various styling techniques and results with the thermal brush.

Your browser does not support the video tag.

Video: "Wavytalk Thermal Styling Brush" - A seller-provided video showcasing the thermal brush in action, demonstrating its effectiveness in styling hair.

MAINTENANCE

1. Make sure that the appliance is turned off, unplugged, and has cooled off completely before cleaning.
2. Do not wrap the cord around the appliance. Never allow the power cord to be pulled severely, bent, warped, or twisted around the appliance as damage may occur.
3. Do not put any stress on the cord, especially at the point of entry into the handle, as it can cause the cord to fray and possibly break.
4. Do not hang appliance up by the cord.

5. Store in the original packaging or in a clean, dry place.
6. Use the provided hair brush cleaner to remove any trapped hair from the bristles.
7. Clean the appliance with a soft, slightly damp cloth to wipe the appliance.
8. Do not use any object that can scratch the appliance.
9. Do not use thinners, gasoline, alcohols, chemicals, or hot water to clean the appliance.

TROUBLESHOOTING

If Your Product Stops Working, Please Follow the Procedure Below:

1. Switch off the unit.
2. Unplug the unit from the plug socket and check the socket to see if it works.
3. Wait for 15 minutes and then plug the unit back into the wall socket or into another socket.
4. Switch the unit back on.

FAQ:

This appliance is with worldwide dual voltage and the plug only works in the United States. You do not need an electrical converter, but you will need a plug adapter that will solve the socket issues when you use it abroad. The voltage will switch automatically.

SPECIFICATIONS

| Specification | Value |
|----------------------|---|
| Product Name | Thermal Brush |
| Model Number | 55US-186PK-DI-XAhQy4ZP |
| Dual Voltage | 120/240VAC |
| Frequency | 60/50Hz |
| Power Rating | 80W |
| Temperature Settings | 330°F (170°C), 370°F (190°C), 410°F (210°C) |
| Cord Length | 79" / 2m |
| Barrel Size | 1.5" / 38mm |
| Product Dimensions | 1.18 x 1.18 x 11.81 inches |
| Item Weight | 14.07 ounces |
| Material | Plastic |
| Power Source | Corded Electric |

WARRANTY AND SUPPORT

Your appliance comes with a one-year warranty. Please feel free to contact us if you have any questions. In any case, we will offer you a satisfactory solution.

